



# **Transmission Pricing Methodology**

Regulatory Control Period: 1 July 2019 to 30 June 2024

## Authorisations

Action	Name and title	Date
Prepared by	Iain Meaney, Commercial Solutions Team Leader	September 2017
Reviewed by	Adrian Pickin, Pricing Specialist	November 2017
Reviewed by		
Authorised by	Mike Paine, General Manager CENO	January 2018

## Responsibilities

This document is the responsibility of the Revenue Reset Team, Tasmanian Networks Pty Ltd, ABN 24 167 357 299 (hereafter referred to as “TasNetworks”).

Enquiries regarding this document should be addressed to:

Revenue Reset Program Leader  
PO Box 606  
Moonah TAS 7009  
Email: [revenue.resets@tasnetworks.com.au](mailto:revenue.resets@tasnetworks.com.au)

## Table of Contents

<b>1</b>	<b>Introduction</b> .....	<b>5</b>
<b>2</b>	<b>Interpretation</b> .....	<b>5</b>
<b>3</b>	<b>Prescribed transmission services</b> .....	<b>5</b>
<b>4</b>	<b>Rules requirements</b> .....	<b>6</b>
<b>5</b>	<b>Pricing methodology guidelines requirements</b> .....	<b>6</b>
<b>6</b>	<b>TasNetworks' pricing methodology</b> .....	<b>7</b>
6.1	Background.....	7
6.2	Single transmission network service provider .....	9
6.3	Aggregate annual revenue requirement .....	9
6.4	Categories of transmission services .....	10
6.5	The pricing process .....	10
6.6	Cost allocation .....	11
6.6.1	Allocation of assets providing shared connection services .....	11
6.7	Calculation of the attributable cost share for each category of service .....	12
6.8	Calculation of the annual service revenue requirement (ASRR) .....	13
6.9	Allocation of the ASRR to transmission network connection points.....	13
6.9.1	Prescribed entry services .....	13
6.9.2	Prescribed exit services .....	14
6.9.3	Prescribed transmission use of system services .....	15
6.10	Modified cost reflective network pricing methodology.....	17
6.11	Transmission prices and charges.....	17
6.11.1	Prescribed entry and exit service .....	17
6.11.2	Prescribed TUOS services: locational component prices and charges .....	18
6.11.3	Prescribed TUOS services: non-locational component prices and charges .....	20
6.11.4	Prescribed common service prices and charges .....	21
6.12	Standby service arrangements .....	22
6.13	Excess demand charge.....	22
6.14	Setting of prescribed TUOS services locational prices between annual price publications.....	23
<b>7</b>	<b>Billing arrangements</b> .....	<b>23</b>
7.1	Billing for modified load export charges .....	23
7.2	Billing for prescribed transmission services.....	24
7.3	Payments between Transmission Network Service Providers.....	24
<b>8</b>	<b>Prudential requirements</b> .....	<b>24</b>
8.1	Prudential requirements for prescribed transmission services.....	24
8.2	Capital contribution or prepayment for a specific asset.....	25

9	Prudent discounts.....	25
10	Inter-regional transmission charging.....	25
11	Monitoring and compliance .....	26
12	Additional information requirements.....	26
13	Conclusion .....	26
	Appendix A: Overview of pricing process .....	27
	Appendix B: Details of cost allocation process .....	28
	Appendix C: Cost reflective network pricing methodology.....	30
	Appendix D: Priority ordering methodology.....	32
	Appendix E: Examples of application of priority ordering process.....	37
	Appendix F: Inter-regional transmission charging .....	48

## 1 Introduction

Tasmanian Networks Pty Ltd is the electricity *Transmission Network Service Provider (TNSP)* in Tasmania.

This *pricing methodology*, for the regulatory period from 1 July 2019 to 30 June 2024, is submitted to the Australian Energy Regulator (AER) for approval in accordance with the requirements of chapter 6A of the National Electricity Rules (the *Rules*) and the AER's *Pricing Methodology Guidelines*.<sup>1</sup>

## 2 Interpretation

All terms in this *pricing methodology* that are italicised have the meaning given to them in the *Pricing Methodology Guidelines* or, where no definition is provided in that document, the *Rules*.

## 3 Prescribed transmission services

TasNetworks' *pricing methodology* relates to the provision of *prescribed transmission services* in Tasmania by TasNetworks. These services include:

- *shared transmission services* provided to customers directly connected to the *transmission network* and connected *Network Service Providers (prescribed transmission use of system (TUOS) services)*;
- *connection services* provided to connect the *distribution network* to the *transmission network (prescribed exit services)*;
- grandfathered *connection services* provided to *Generators* and customers directly connected to the *transmission network* for *connections* that were in place or committed to be in place on 9 February 2006 (*prescribed entry services* and *prescribed exit services*); and
- services that provide equivalent benefits to all *Transmission Customers* without any differentiation based on their location, and therefore cannot be reasonably allocated on a locational basis (*prescribed common transmission services*).

TasNetworks' *pricing methodology* does not relate to the provision of *negotiated transmission services* or other *transmission services* provided by TasNetworks that are not subject to economic regulation under the *Rules (non-regulated transmission services)*.

---

<sup>1</sup> AER, *Final, Electricity transmission network service providers, Pricing methodology guidelines, version 2*, 17 July 2014.

## 4 Rules requirements

Clause 6A.24.1(b) of the *Rules* states that a *pricing methodology* is a methodology, formula, process or approach that, when applied by a *Transmission Network Service Provider*:

- (1) allocates the *aggregate annual revenue requirement* for *prescribed transmission services* provided by the *Transmission Network Service Provider* to each *category of prescribed transmission services*;
- (2) provides for the manner and sequence of adjustments to the *annual service revenue requirement*;
- (3) allocates the *annual service revenue requirement* to *transmission network connection points* (other than connection points of any *Market Network Service Provider*); and
- (4) determines the structure and recovery of prices for each *category of prescribed transmission services* under 6A.23.4(a).

The *Rules* also require that the *pricing methodology* satisfy principles and guidelines established by the *Rules*. In particular, clause 6A.10.1(e) of the *Rules* requires that a proposed *pricing methodology* must:

- (1) give effect to and be consistent with the *Pricing Principles for Prescribed Transmission Services*; and
- (2) comply with the requirements of, and contain or be accompanied by such information as is required by, the *pricing methodology guidelines* made for that purpose under rule 6A.25.

Further, under clause 6A.24.1(d) of the *Rules* a *Transmission Network Service Provider* must comply with the *pricing methodology* approved by the *AER* as part of a *transmission determination* that applies to that *Transmission Network Service Provider*, and any other applicable requirements in the *Rules*, when the *Transmission Network Service Provider* is setting the prices that may be charged for the provision of *prescribed transmission services*.

## 5 Pricing methodology guidelines requirements

The *Pricing Methodology Guidelines* supplement and elaborate on the *Pricing Principles for Prescribed Transmission Services* contained in clause 6A.23 of the *Rules* in so far as they specify or clarify:

- the information that is to accompany a proposed *pricing methodology*;
- permitted pricing structures for the recovery of the locational component of *prescribed TUOS services*;
- permitted postage-stamp pricing structures for the recovery of the adjusted non-locational component of *prescribed TUOS services* and *prescribed common transmission services*;
- the types of *transmission system assets* that are directly attributable to each *category of prescribed transmission services*; and

- the parts of a proposed *pricing methodology*, or the information accompanying it that will not be publicly disclosed without the consent of the *TNSP*.

All key elements of TasNetworks' *pricing methodology* are permissible under the *Pricing Methodology Guidelines*. These elements include:

- calculation of the locational component of *prescribed TUOS services* costs using the *modified cost reflective network pricing methodology*;
- the locational *prescribed TUOS services* price being based on *contract agreed maximum demand*;
- the postage-stamp basis of pricing structures for the non-locational component of *prescribed TUOS services* and *prescribed common transmission services* being based on *contract agreed maximum demand* or historical energy;
- the methodology for implementation of priority ordering (being the priority ordering approach under clause 6A.23.2(d) of the *Rules*);
- a description of how asset costs which may be attributable to both *prescribed entry services* and *prescribed exit services* will be allocated at a *connection point*;
- a description of billing arrangements under clause 6A.27 of the *Rules*;
- a description of prudential requirements as outlined in clause 6A.28 of the *Rules*;
- the inclusion of hypothetical worked examples;
- a description of any differences between the pricing methodology applied during the current *regulatory control period* and that proposed for the next *regulatory control period*; and
- a description of how TasNetworks intends to monitor and develop records of its compliance with its approved *pricing methodology*, the *Pricing Principles for Prescribed Transmission Services* (clause 6A.23 of the *Rules*) and part J of the *Rules* in general.

## 6 TasNetworks' pricing methodology

### 6.1 Background

In December 1999, the Tasmanian Electricity Regulator issued a determination in relation to electricity pricing policies. As part of that determination, Transend<sup>2</sup> was required to develop a transmission pricing policy through a consultative process with (Tasmanian Electricity) Code Participants and interested parties. In November 2000 Transend's original Transmission Pricing Policy was published, describing how transmission prices were determined and applied in Tasmania from that date. It was based on pricing principles set out in the

---

<sup>2</sup> Transend Networks Pty Ltd (Transend) was the *TNSP* in Tasmania from 1 July 1998 to 30 June 2014. TasNetworks commenced operations on 1 July 2014 and was formed by a merger between Aurora Energy's *distribution network* and Transend's *transmission network*.

Tasmanian Electricity Code – as it existed then – and the State Regulator’s Pricing Determination of December 1999. The Transmission Pricing Policy was updated regularly, including when Transend became subject to the (then) National Electricity Code.

Transend’s *pricing methodology*, applicable from 1 July 2009 to 30 June 2014, was prepared to satisfy the requirements of the *Pricing Principles for Prescribed Transmission Services*, Part J of the *Rules* and the *AER’s Pricing Methodology Guidelines*. It was approved by the *AER* in its decision on Transend’s *transmission determination* for 2009-10 to 2013-14 of April 2009.

A *pricing methodology* applicable from 1 July 2015 to 30 June 2019 was submitted to the *AER* in June 2014 as part of TasNetworks’ revenue application for that period and was approved by the *AER* in its draft decision of November 2014. That *pricing methodology* included minor amendments to:

- permit reductions to *contract agreed maximum demand* applied to reduce *contract agreed maximum demand* based charges in prevailing *financial year* where the reduction is not temporary in nature (section 6.11.3) ; and
- include specific standby provisions in section 6.12 in the *pricing methodology* to encourage customers to better manage their peak demand and reduce the impact on the *transmission network* at times of high network utilisation.

The *pricing methodology guidelines* were amended in late 2014 to reflect the *Rule* changes to allow inter-regional transmission charging, which commenced on 1 July 2015. Consequently, TasNetworks amended its *pricing methodology* which was submitted to the *AER* in late February 2015 and approved in May 2015. The changes to the *pricing methodology* included:

- references to inter-regional charging;
- a small number of updates to *Rules* references due to changes to clause numbering in the *Rules*; and
- a new appendix describing how inter-regional charges are calculated, including a worked example.

The *pricing methodology* for the period from 1 July 2015 to 30 June 2019 included minor amendments to:

- permit reductions to *contract agreed maximum demand* applied to reduce *contract agreed maximum demand* based charges in prevailing *financial year* where the reduction is not temporary in nature (section 6.11.2.1) ; and
- include specific standby provisions to encourage customers to better manage their peak demand and reduce the impact on the *transmission network* at times of high network utilisation (section 6.12).

Following an internal review and consultation with customers, no material change has been made to the *pricing methodology* to apply from 1 July 2019 to 30 June 2024. Minor editing changes have been made, particularly to update references to the *Rules*.



## 6.2 Single transmission network service provider

TasNetworks is the sole provider of *prescribed transmission services* within Tasmania and is responsible for the allocation of the *AARR* within Tasmania, in accordance with clause 6A.29.2 of the *Rules*.

## 6.3 Aggregate annual revenue requirement

The revenue that a *TNSP* may earn in any *regulatory year* of a *regulatory control period* from the provision of *prescribed transmission services* is known as the *maximum allowed revenue*.<sup>3</sup>

The *AARR* is calculated in accordance with clause 6A.22.1 of the *Rules* as:

“the *maximum allowed revenue* referred to in clause 6A.3.1 adjusted:

- (1) in accordance with clause 6A.3.2;
- (2) by subtracting the operating and maintenance costs expected to be incurred in the provision of *prescribed common transmission services*; and
- (3) by any allocation as agreed between *Transmission Network Service Providers* in accordance with clause 6A.29.3.”

The adjustments referred in (1) above could relate to a number of factors including:

- reopening of the *revenue determination* for capital expenditure (not being a *pass through event* or a *contingent project*) under clause 6A.7.1 of the *Rules*;
- *network support pass through* under clause 6A.7.2 of the *Rules*;
- cost pass through under clause 6A.7.3 of the *Rules*;
- *service target performance incentive scheme* outcomes under clause 6A.7.4 of the *Rules*;
- *small-scale incentive scheme* outcomes under clause 6A.7.5 of the *Rules*;
- *contingent projects* under clause 6A.8 of the *Rules*; and
- revocation of *revenue determination* for wrong information or error under clause 6A.15 of the *Rules*.

The costs referred in (2) above are derived from budget projections and include:

- network switching and operations;
- administration and management of the business;
- network planning and development; and
- general overheads.

---

<sup>3</sup> Clause 6A.3.1 of the *Rules*.

There are no allocations referred to in (3) as TasNetworks is the sole provider of *prescribed transmission services* within Tasmania (see section 6.2).

#### **6.4 Categories of transmission services**

TasNetworks' AARR is recovered from transmission charges for the following *categories of prescribed transmission services*:

- *prescribed entry services*, which are *entry services* that are *prescribed transmission services* by virtue of the operation of clause 11.6.11 of the *Rules*;
- *prescribed exit services*, which are *exit services* that are *prescribed transmission services* by virtue of the operation of clause 11.6.11 of the *Rules* and *exit services* provided to *Distribution Network Service Providers*;
- *prescribed common transmission services*, which are *prescribed transmission services* that provide equivalent benefits to:
  - (i) all *Transmission Customers* who have a *connection point* with the relevant *transmission network* without any differentiation based on their location within the *transmission system*; and
  - (ii) *Transmission Network Service Providers* in *interconnected regions*, without any differentiation based on the location of their direct or indirect *connection* or *interconnection* with the relevant *transmission system*.
- *prescribed transmission use of system (TUOS) services*, which are *prescribed transmission services* that are not *prescribed common transmission services*, *prescribed entry services* or *prescribed exit services*, and that provide specific benefits to:
  - (i) *Transmission Customers* who have a *connection point* with the relevant *transmission network*, based on the location of that *connection point* within the *transmission system*; and
  - (ii) *Transmission Network Service Providers* who have a direct or indirect *connection* or an *interconnection* with the relevant *transmission network*, based on the location of that *connection* or *interconnection* within the relevant *transmission system*.

#### **6.5 The pricing process**

The determination of *prescribed transmission service* prices involves five steps:

- (a) allocation of the costs of *transmission system* assets to the *categories of prescribed transmission service*, to the extent to which assets are directly attributable to the provision of a *category of prescribed transmission services* (section 6.6);
- (b) calculation of the *attributable cost shares* (section 6.7);

- (c) calculation of the Annual Service Revenue Requirement (ASRR) by the allocation of the AARR to each category of prescribed transmission services in accordance with the attributable cost share for that category of prescribed transmission services (section 6.8);
- (d) allocation of the ASRR for *prescribed entry services*, *prescribed exit services* and *prescribed TUOS services* to each *transmission network connection point* in accordance with the principles set out in clause 6A.23.3 of the *Rules* (section 6.9); and
- (e) calculation of prices for each *category of prescribed transmission service* (section 6.11).

Each step is described in further detail below.

## 6.6 Cost allocation

The **first step** in calculating *prescribed transmission service* prices is to allocate the costs of transmission system assets to the *categories of prescribed transmission services* in section 6.4 above, to the extent to which assets are directly attributable to the provision of a *category of prescribed transmission services*.

The delineation between the assets that provide *prescribed entry services*, *prescribed exit services*, *prescribed TUOS services* and *prescribed common transmission services* is set out in section 2.4 of the *Pricing Methodology Guidelines*.

TasNetworks' cost allocation process assigns the optimised replacement cost (ORC)<sup>4</sup> of all assets providing *prescribed transmission services* to individual network pricing branches. Each network pricing branch is then defined as common, connection (entry or exit) or shared network. The pricing branches are used to determine the costs of the *transmission system* assets directly attributable to each *category of prescribed transmission services*, as required under chapter 6A of the *Rules*. This cost allocation process is explained in more detail in Appendix B.

### 6.6.1 Allocation of assets providing shared connection services

In the case of a shared *connection* asset (such as a *transformer*) serving multiple *transmission connection points*, which may provide both *prescribed entry services* and *prescribed exit services*, the cost of the shared *connection* asset will be allocated to the appropriate *category or categories of prescribed transmission services* based on a negotiated agreement between the parties involved.

In the absence of any such agreement, any such assets will be attributed on the basis of *contract agreed maximum demand* and the installed *generator* capacity of each *Transmission Network User*.

---

<sup>4</sup> Consistent with clause 6A.22.3(b) of the *Rules*.

## 6.7 Calculation of the attributable cost share for each category of service

The **second step** in calculating *prescribed transmission service* prices is the calculation of the *attributable cost shares*. The *attributable cost share* for each *category of prescribed transmission services* is calculated in accordance with clause 6A.22.3 of the *Rules* as the ratio of:

- (a) the costs of the *transmission system* assets directly attributable to the provision of that *category of prescribed transmission services*; to
- (b) the total costs of all the *Transmission Network Service Provider’s transmission system* and any other *transmission system* assets directly attributable to the provision of *prescribed transmission services*,

where these amounts are determined as detailed in section 6.6 above.

For example, if the ORCs of *prescribed transmission services* assets have been allocated to the applicable *categories of prescribed transmission services* as shown in Table 1 then the *attributable costs shares* are calculated as shown in the hypothetical example below:

**Table 1 Hypothetical costs allocated to categories of prescribed transmission services**

Category	ORC (\$)
Exit services	10,000,000
Entry services	5,000,000
TUOS services	65,000,000
Common services	20,000,000
<b>Total</b>	<b>100,000,000</b>

$$\begin{aligned}
 \text{Attributable cost share}_{\text{EXIT}} &= \text{ORC}_{\text{EXIT}} / \text{ORC}_{\text{TOTAL}} \\
 &= \$10,000,000 / \$100,000,000 \\
 &= 0.10
 \end{aligned}$$

with the *attributable cost shares* of the other *categories of prescribed transmission services* calculated in the same manner, as shown in Table 2.

**Table 2 Hypothetical attributable cost shares**

Category	ORC (\$)	Attributable cost share
Exit services	10,000,000	0.10
Entry services	5,000,000	0.05
TUOS services	65,000,000	0.65
Common services	20,000,000	0.20
<b>Total</b>	<b>100,000,000</b>	<b>1.00</b>

## 6.8 Calculation of the annual service revenue requirement (ASRR)

The **third step** in calculating *prescribed transmission service* prices is to allocate the *AARR* to each *category of prescribed transmission services* in accordance with the *attributable cost share* for that *category of prescribed transmission services*.

This allocation results in the *ASRR* for each *category of prescribed transmission services*.

Assuming an *AARR* of \$8,000,000 and applying the *attributable cost shares* determined above, the *ASRR* for each *category of prescribed transmission services* is calculated as:

$$\begin{aligned} ASRR_{EXIT} &= AARR \times \text{Attributable cost share}_{EXIT} \\ &= \$8,000,000 \times 0.10 \\ &= \$800,000 \end{aligned}$$

with the *ASRRs* of the other *categories of prescribed transmission services* calculated in the same manner.

**Table 3 Hypothetical annual service revenue requirements**

Category	Attributable cost share	Annual Service Revenue Requirement (\$)
Exit services	0.10	800,000
Entry services	0.05	400,000
TUOS services	0.65	5,200,000
Common services	0.20	1,600,000
<b>Total</b>	<b>1.00</b>	<b>8,000,000</b>

## 6.9 Allocation of the ASRR to transmission network connection points

The **fourth step** in calculating *prescribed transmission service* prices is to allocate the *ASRR* for *prescribed entry services*, *prescribed exit services* and *prescribed TUOS services* to each *transmission network connection point* in accordance with the principles of clause 6A.23.3 of the *Rules*.

### 6.9.1 Prescribed entry services

The whole of the *ASRR* for *prescribed entry services* is allocated to each *transmission network connection point* in accordance with the *attributable connection point cost share* for *prescribed entry services* that are provided by the *TNSP* at that *connection point*.

The *attributable connection point cost share* for *prescribed entry services* is the ratio of the costs of the *transmission system* assets directly attributable to the provision of *prescribed entry services* at that *transmission network connection point* to the total costs of all the *TNSP's transmission system* assets directly attributable to the provision of *prescribed entry services*.

For example, if two *Generators*, Gen A1 and Gen A2, receive *prescribed entry services* and the cost allocation process has allocated the ORCs of assets directly attributable to *prescribed entry services* to them as shown in Table 4.

**Table 4 Hypothetical prescribed entry services ORCs**

Entry service (connection point)	ORC (\$)
Gen A1	3,500,000
Gen A2	1,500,000
<b>Total ORC of prescribed entry assets</b>	<b>5,000,000</b>

$$\begin{aligned}
 \text{Attributable connection point cost share}_{\text{GEN A1}} &= \text{ORC}_{\text{GEN A1}} / \text{ORC}_{\text{ENTRY}} \\
 &= \$3,500,000 / \$5,000,000 \\
 &= 0.70
 \end{aligned}$$

with the *attributable connection point cost share* of the other *Generator* being calculated in the same manner, shown in Table 5.

**Table 5 Hypothetical attributable connection point cost shares**

Entry service (connection point)	ORC (\$)	Attributable connection point cost share
Gen A1	3,500,000	0.70
Gen A2	1,500,000	0.30
<b>Total ORC of prescribed entry assets</b>	<b>5,000,000</b>	<b>1.00</b>

The *ASRR* allocated to the Gen A1 *transmission network connection point* is calculated as follows:

$$\begin{aligned}
 \text{ASRR}_{\text{GEN A1}} &= \text{ASRR}_{\text{ENTRY}} \times \text{Attributable connection point cost share}_{\text{GEN A1}} \\
 &= \$400,000 \times 0.70 \\
 &= \$280,000
 \end{aligned}$$

with the *ASRR* for the Gen A2 *transmission network connection point* being calculated in the same manner.

**Table 6 Hypothetical connection point ASRRs (entry)**

Entry service (connection point)	ORC (\$)	Attributable connection point cost share	Connection point ASRR (\$)
Gen A1	3,500,000	0.70	280,000
Gen A2	1,500,000	0.30	120,000
<b>Total ORC of prescribed entry assets</b>	<b>5,000,000</b>	<b>1.00</b>	<b>400,000</b>

### 6.9.2 Prescribed exit services

The whole of the *ASRR* for *prescribed exit services* is allocated to each *transmission network connection point* in accordance with the *attributable connection point cost share* for *prescribed exit services* that are provided by the *TNSP* at that *connection point*.

The *attributable connection point cost share* for *prescribed exit services* is the ratio of the costs of the *transmission system* assets directly attributable to the provision of *prescribed exit services* at that *transmission network connection point* to the total costs of all the *transmission system* assets directly attributable to the provision of *prescribed exit services*.

The *ASRRs* of the *prescribed exit services connection points* are calculated in the same manner as for the *prescribed entry services connection points*.

**Table 7 Hypothetical connection point ASRRs (exit)**

Exit service (connection point)	ORC (\$)	Attributable connection point cost share	Connection point ASRR (\$)
Load A1	4,000,000	0.40	320,000
Load A2	800,000	0.08	64,000
Load B1	3,500,000	0.35	280,000
Load B2	1,700,000	0.17	136,000
<b>Total</b>	<b>10,000,000</b>	<b>1.00</b>	<b>800,000</b>

### 6.9.3 Prescribed transmission use of system services

The *prescribed TUOS services ASRR* is recovered from:

- *prescribed TUOS services* (locational component); and
- *prescribed TUOS services* (adjusted non-locational component).

Clause 6A.23.3(a)(1) requires that 50 per cent of the *ASRR* for *prescribed TUOS services* is to be allocated between a *pre-adjusted locational component* and a *pre-adjusted non-locational component*, unless different allocation shares can be justified. TasNetworks will use the prescribed 50 per cent shares, in line with TasNetworks' previous practices.<sup>5</sup>

Clause 6A.23.3(b) of the *Rules* requires that:

- (b) Subject to paragraph (d), the *pre-adjusted locational component* is to be adjusted by:
- (1) subtracting any amount estimated as proceeds from *auctions* or any portion of *settlements residue* allocated to the *directional interconnector* which is not the subject of a *SRD agreement* estimated to be receivable by the *Transmission Network Service Provider* from the *connection points* for each relevant *directional interconnector* as referred to in clause 3.18.4, with that amount including an adjustment calculated in accordance with paragraph (f); and

<sup>5</sup> These 50 per cent shares are allocated to the locational and non-locational components prior to subsequent adjustments allowed by the *Rules* (see clauses 6A.23.3(b) and 6A.23.3(e) of the *Rules*). Therefore, the actual share of the *ASRR* for *prescribed TUOS services* recovered from the locational and non-locational components will be different to the 50 per cent share initially allocated to each component.

- (2) adding or subtracting the amount estimated by the *Co-ordinating Network Service Provider* for the *modified load export charge* receivable by or payable to the *Transmission Network Service Provider* under clause 6A.29A.5, with that amount including an adjustment calculated in accordance with paragraph (f),

(the *adjusted locational component*).

Basslink is the only *interconnector* between Tasmania and the rest of the *NEM*. As Basslink is a *market network service provider (MNSP)*, there is no requirement for TasNetworks to make allowance for the estimated *inter-regional settlements residue auction amounts* as outlined in clause 6A.23.3(b)(1) of the *Rules*.

TasNetworks will also calculate the *modified load export charge* referred to in clause 6A.23.3(b)(1) of the *Rules*. For more details on *inter-regional transmission* charging refer to Appendix F of this *pricing methodology*.

The adjusted locational component is allocated between *connection points* on the basis of the estimated proportionate use of the relevant *transmission system* assets by each customer using the *modified CRNP methodology*. TasNetworks has employed the *modified CRNP methodology* previously because of the highly radialised nature of the *transmission system* in Tasmania and proposes to continue to apply the *modified CRNP methodology* as described in section 6.10.

The *CRNP methodology* allocates a proportion of shared network costs to individual customer *connection points*. TasNetworks applies the *modified CRNP methodology* using the TPRICE *cost reflective network pricing* software approved by the *AER* for use by *TNSPs* in the *NEM*.

Appendix C describes the *CRNP methodology* in more detail.

As required under clause 6A.23.3(e) of the *Rules*, the *pre-adjusted non-locational component* is to be adjusted by:

- (1) subtracting the absolute value of the amount (if any) referred to in clause 6A.23.3(d);
- (2) adding or subtracting any amount for *settlements residue* (not being any *auction* amount referred to in subparagraph (b)(1), but including any amount of *settlements residue* due to *intra-regional loss factors*) estimated to be receivable by or payable to the *Transmission Network Service Provider* in accordance with clause 3.6.5(a)(3);
- (3) adding or subtracting any adjustment arising as a result of the application of clauses 6A.23.4(c) and (d);
- (4) adding or subtracting any amount arising as a result of the application of prudent discounts (if any) under clauses 6A.26.1(d) to (g); and
- (5) adding or subtracting any *over-recovery amount* or *under-recovery amount*, with that amount including an adjustment calculated in accordance with paragraph (f),

(the *adjusted non-locational component*).



## 6.10 Modified cost reflective network pricing methodology

The modification of the standard *CRNP* process employed by TasNetworks is to discount the charges to be recovered from radial *transmission lines* by the utilisation of those lines. For example, if the *CRNP methodology* suggests that TasNetworks should recover \$1 million from a particular radial line that has a utilisation factor of 60 per cent, then only \$0.6 million is recovered from connection points relating to this line through the locational component of the *prescribed TUOS services ASRR*. The modification applies to radial lines only and is not applied to those assets that are part of the meshed *transmission network*.

The reason for applying this modification is that it means that existing customers are not penalised for the low utilisation of such assets and it provides potential customers with a financial incentive to locate where the utilisation rate is low, thereby enhancing overall utilisation of the *transmission system* and potentially deferring augmentation.

Consistent with section 2.2(b) of the *Pricing Methodology Guidelines*, the output of the TPRICE software is a “lump sum dollar amount to be recovered at each *transmission connection point*”.<sup>6</sup> Using the *modified CRNP methodology* will mean that the aggregate value of these lump sum dollar amounts is less than the 50 per cent allocation of the *ASRR* for *prescribed TUOS services* that was to be allocated through the locational component. Any part of the *ASRR* for the locational component that is not allocated due to application of the *modified CRNP* is added to the non-locational component. In the example above, \$0.4 million would not be allocated to *connection points* by virtue of the *modified CRNP*, so this amount is added to (and recovered via) the non-locational component.

## 6.11 Transmission prices and charges

The **fifth step** in the determination of *prescribed transmission prices* is the development of separate prices for each *category of prescribed transmission services*, being:

- *prescribed entry services*;
- *prescribed exit services*;
- *prescribed common transmission services*;
- *prescribed TUOS services* – locational component; and
- *prescribed TUOS services* – the adjusted non-locational component.

### 6.11.1 Prescribed entry and exit service

*Prescribed entry services* and *prescribed exit services* prices are calculated to recover the *prescribed entry* and *prescribed exit services ASRRs* from the *Network Users* who are served by the relevant *connection assets*.

---

<sup>6</sup> AER, *Final, Electricity transmission network service providers, Pricing methodology guidelines, version 2*, 17 July 2014, p.6.

The *prescribed entry services ASRR* is recovered as a fixed annual charge for each relevant connection point. The process to determine the *ASRR* for *prescribed entry services* for each individual *connection point* was determined in section 6.9.1. This amount will be recovered by a fixed dollar amount per month.

Similarly, the *prescribed exit services ASRR* is recovered as a fixed annual charge for each relevant *connection point*. The process to determine the *ASRR* for *prescribed exit services* for each individual *connection point* was determined in section 6.9.2. This amount will be recovered by a fixed dollar amount per month.

### **6.11.2 Prescribed TUOS services: locational component prices and charges**

Consistent with the provisions of section 2.2(c)(1) of the *Pricing Methodology Guidelines*, locational prices will be determined on the basis of *contract agreed maximum demand*.

The *prescribed TUOS services* locational *ASRR* described in section 6.9.3 is priced on a *contract agreed maximum demand* basis (\$/MW/day), where the *contract agreed maximum demand* is specified in, and re-negotiated in accordance with, customer connection agreements.

The *modified CRNP methodology* outlined in schedule S6A.3 of the *Rules* and detailed in this *pricing methodology* describes the process for cost allocation for the locational component of *prescribed TUOS services*, which results in a lump sum dollar amount to be recovered at each *connection point*.

This lump sum dollar amount for each *connection point* is divided by the product of the number of *days* in the forthcoming *financial year* and the *contract agreed maximum demand* (prevailing at the time transmission prices are published) to calculate the locational price for each *connection point*<sup>7</sup> and is expressed as \$/MW/day.

As provided for under clause 6A.23.4(b)(2) of the *Rules*, *prescribed TUOS services* locational prices must not change by more than 2 percentage points per annum at *connection points* relative to the load weighted average *prescribed TUOS services* locational price for the *region*. The balance of any revenue shortfall or *over-recovery amount* resulting from these price caps is recovered or offset as appropriate by adjusting the *prescribed TUOS services* non-locational prices and charges.

As further provided for under clause 6A.23.4(b)(3) of the *Rules*, prices for recovering the *prescribed TUOS services – adjusted locational component* “are not subject to the limitation in subparagraph (2):

- (i) to the extent that the change in prices relate to the adjusted *modified load export charge* as referred to in clause 6A.23.3(b)(2); or
- (ii) if, since the commencement of the previous *regulatory year*:
  - (A) the *load* at the *connection point* has materially altered;

---

<sup>7</sup> The *connection point* for the purposes of determining the *prescribed TUOS* prices and *prescribed TUOS* charges will be the agreed point (or points) of supply between TasNetworks and the *transmission network user*.

- (B) in connection with that alteration, the *Transmission Customer* requested a renegotiation of its *connection agreement* with the *Transmission Network Service Provider*; and
- (C) the *AER* approved the change.”

This provision sets the *prescribed TUOS services* locational price at a *connection point* with a material change in *load* on the same basis as a new *connection point*.

In the event that a *Transmission Customer* requests a material change in *contract agreed maximum demand* at an existing *connection point*, TasNetworks may seek approval from the *AER* to set the *prescribed TUOS services* locational price as intended by clause 6A.23.4(b)(3) of the *Rules*.

*Prescribed TUOS services* locational charges are determined for each *connection point* providing *prescribed TUOS services* by multiplying the *prescribed TUOS services* locational price by the *contract agreed maximum demand* (prevailing during the billing period<sup>8</sup> concerned) for that *connection point*, determined in accordance with the customer's *connection agreement*, and multiplying this amount by the number of *days* in the billing period.

Any *over-recovery amount* or *under-recovery amount* arising from variances between forecast *contract agreed maximum demands* and the *contract agreed maximum demands* used for calculating *prescribed TUOS services* locational charges will be addressed by way of an *under-recovery amount* or an *over-recovery amount* adjustment when calculating prices in future *financial years*.

#### **6.11.2.1 Changes to contract agreed maximum demand**

On the basis that customers' *contract agreed maximum demands* are used to determine prices and to calculate charges, any changes to a customer's *contract agreed maximum demand* will have repercussions on the recovery of the *AARR*. Further, a core tenet of pricing for *prescribed transmission services* is that a customer's current behaviour should only affect their locational charge, with all other charges effectively being fixed (or sunk costs). Therefore it is clear that customers should not be able to change their *contract agreed maximum demand* simply for the sake of reducing their charges.

If customers were permitted to reduce their *contract agreed maximum demand* during a *financial year* on a temporary basis, it would provide an incentive for customers with seasonal demands to alter their *contract agreed maximum demand* to match their demand. This would introduce an unnecessary element of complexity into the pricing calculations, as well as customer and asset management.

While the implications for pricing would be addressed through the existing under and over-recovery process, it would not overcome the principle outlined above that a customer's current behaviour should only affect their locational charge.

---

<sup>8</sup> For the purposes of this *pricing methodology*, references to a billing period refer to a calendar month.

There would also be a further complication for sites providing *connection services* to more than one customer. In such situations, the cost of assets providing services to more than one customer are (typically) allocated according to the ratio of each customer's *contract agreed maximum demand*. In the situation where one customer reduces their *contract agreed maximum demand*, the other customer(s) at that site would face increased connection charges.

TasNetworks' connection agreement will specify the process required to adjust a customer's *contract agreed maximum demand*. Any requests to reduce a customer's *contract agreed maximum demand* on a temporary basis (for example, for seasonal demands) will not result in any reduction during the prevailing *financial year* of any charges calculated using *contract agreed maximum demand*. However, any increases in *contract agreed maximum demand* or any decreases that are of a permanent nature will be applied immediately to the calculation of relevant charges.

### **6.11.3 Prescribed TUOS services: non-locational component prices and charges**

Prices for recovery of the adjusted non-locational component of *prescribed TUOS services* are set on a *postage-stamp basis* in accordance with clause 6A.23.4(e) of the *Rules*.

Consistent with the provisions of section 2.3(c)(1) of the *Pricing Methodology Guidelines* prices on a *postage-stamp basis* are determined on the basis of *contract agreed maximum demand* and historical *energy* offtake and calculated annually as follows.

Each *financial year* TasNetworks will determine the following two prices to apply at every *connection point*:

- an *energy*-based price that is a price per unit of historical metered *energy* or current metered *energy* at a *connection point* expressed as \$/MWh; and
- a *contract agreed maximum demand* price that is a price per unit of *contract agreed maximum demand* at a *connection point* expressed as \$/MW/month.

Either the *energy*-based price or the *contract agreed maximum demand* price will apply at a *connection point* providing *prescribed TUOS services* except for those *connection points* where a *Transmission Customer* has negotiated reduced charges for the adjusted non-locational component of *prescribed TUOS services* in accordance with clause 6A.26.1 of the *Rules* (prudent discounts).

The *energy*-based price and the *contract agreed maximum demand* price is determined so that:

- a *Transmission Customer* with a *load factor* in relation to its *connection point* equal to the median *load factor* for *connection points* with *Transmission Customers* connected to the *transmission network* in the *region* or *regions* is indifferent between the use of the *energy*-based price and the *contract agreed maximum demand* price; and
- the total amount to be recovered by the adjusted non-locational component of *prescribed TUOS services* does not exceed the *ASRR* for this *category of prescribed transmission service*.

The *energy*-based price or the *contract agreed maximum demand price* that applies for the adjusted non-locational component of *prescribed TUOS services* at a *connection point* will be the one which results in the lower estimated charge for that *prescribed transmission service*.

When applying the *energy*-based price, the *prescribed TUOS services* non-locational component charge for a billing period is calculated for each *connection point* by:

- multiplying the *energy*-based price by the metered *energy* offtake at that *connection point* in the corresponding billing period two years earlier (that is, historical metered *energy* offtake); or
- multiplying the *energy*-based price by the metered *energy* offtake at that *connection point* in the same billing period (current metered *energy* offtake) if the historical metered *energy* offtake is unavailable; or
- multiplying the *energy*-based price by the current metered *energy* offtake if the historical metered *energy* offtake is significantly different to the current metered *energy* offtake.

When applying the *contract agreed maximum demand price*, the *prescribed TUOS services* non-locational component charge for a billing period will be calculated for each *connection point* by multiplying the *contract agreed maximum demand price* by the *contract agreed maximum demand* for the *connection point* (prevailing during the billing period concerned).

Forecast *prescribed TUOS services* non-locational charges will be calculated using the *contract agreed maximum demand* prevailing at the time prices are determined, while the actual *contract agreed maximum demand* based charges will be calculated using the *contract agreed maximum demand* prevailing during the billing period concerned.

Any *over-recovery amount* or *under-recovery amount* arising from variances between forecast *contract agreed maximum demands* and the *contract agreed maximum demands* used for calculating charges will be addressed by way of an *under-recovery amount* or *over-recovery amount* adjustment when calculating prices in future *financial years*.

#### **6.11.4 Prescribed common service prices and charges**

Prices for *prescribed common transmission services* are set on a *postage-stamp basis* in accordance with clause 6A.23.4(f) of the *Rules*.

Consistent with the provisions of section 2.3(c)(1) of the *Pricing Methodology Guidelines* postage-stamped prices will be determined on the basis of *contract agreed maximum demand* or historical *energy* offtake and calculated in a manner identical to that described for *prescribed TUOS services* non-locational charges in the previous section.

In accordance with clause 6A.23.3(h) of the *Rules* the operating and maintenance costs expected to be incurred in the provision of *prescribed common transmission services*, which are deducted from the *maximum allowed revenue* to form the *AARR*, are added to the *ASRR* for *prescribed common transmission services* and recovered through *prescribed common transmission service* prices and charges.

## 6.12 Standby service arrangements

This provision addresses the situation where TasNetworks has agreed to provide *prescribed transmission services* on a standby basis (such as to cover the *outage* of onsite *generation*).

If TasNetworks agrees to provide a standby service the customer's *connection agreement* must specify the terms and conditions applying to the provision of that service.

The customer's *connection agreement* would be required to specify the *contract agreed maximum demand* required to be available to the customer under normal operating conditions and a greater demand that may be sought on a standby basis subject to the operational condition of the *transmission network* at the time the standby arrangements are requested. The *transmission network* would be planned and developed to satisfy the (lower) *contract agreed maximum demand* rather than the (higher) standby demand.

If standby services are included in a customer's *connection agreement*, the customer will pay *prescribed exit services charges* (if applicable), *prescribed TUOS services* locational component charges, *prescribed TUOS services* non-locational component charges and *prescribed common transmission services* based on:

- the *contract agreed maximum demand* under normal operating conditions; and
- the standby demand and/or actual *energy* consumption during times that the standby service is actually utilised for *energy* delivery to the customer.

For the avoidance of doubt,

- where a standby service arrangement has been agreed between TasNetworks and the relevant customer, the customer's *connection agreement* must specify (amongst other things) a *contract agreed maximum demand* and the conditions under which an excess demand charge (as detailed in section 6.13) will apply; and
- nothing in this section 6.12 obliges TasNetworks to agree to provide a standby service arrangement requested by a customer.

## 6.13 Excess demand charge

A *contract agreed maximum demand* price can only be applied for the postage stamped prices if the *Transmission Customer's connection agreement* or other enforceable instrument governing the terms of *connection* of the *Transmission Customer*:

- nominates a *contract agreed maximum demand* for the *connection point*; and
- specifies penalties for exceeding the *contract agreed maximum demand*.

If in any month the 30-minute *billing demand*<sup>9</sup> at a *connection point* exceeds the *contract agreed maximum demand* for that *connection point* without the prior approval of

---

<sup>9</sup> Billing demand is the greater of a *Transmission Customer's* 30-minute *maximum demand* and that customer's 30 minute maximum *apparent power* (in MVA) multiplied by their minimum *Rules*-required *power factor*.

TasNetworks, then the *Transmission Customer* will be liable to pay an excess active demand charge.

The excess active demand charge will be set at three times the *prescribed TUOS services* locational component price for the relevant *connection point* multiplied by the amount by which the billing demand exceeds the *contract agreed maximum demand*.

For the avoidance of doubt, it should be noted that the excess active demand charge is levied in addition to the *prescribed TUOS services* locational component charge. Monies recovered through the excess active demand charge are treated as revenue from *prescribed transmission services* and therefore included in TasNetworks' *maximum allowed revenue*.

#### **6.14 Setting of prescribed TUOS services locational prices between annual price publications**

In the event that TasNetworks is required to set a *prescribed TUOS services* locational price at a new *connection point* or at a *connection point* where the *load* has changed significantly after *prescribed TUOS service* locational prices have been determined and *published*, an interim price, not subject to the side constraints of clause 6A.23.4(b)(2) of the *Rules*, will be determined. This will be calculated using the prevailing pricing models with demands estimated in a manner consistent with section 2.2(f) of the *Pricing Methodology Guidelines*.

A price subject to the side constraints of clause 6A.23.4(b)(2) of the *Rules* will be determined and published at the next annual price determination.

### **7 Billing arrangements**

The process of billing for *modified load export charges*, which is regulated under clause 6A.29A.4 of the *Rules*, is outlined in section 7.1. The process of billing for other *prescribed transmission services* is outlined in section 7.2.

#### **7.1 Billing for modified load export charges**

As the sole provider of *prescribed transmission services* within Tasmania, TasNetworks will issue a bill on a monthly basis to the *Co-ordinating Network Service Provider* for each *interconnected region* for the *modified load export charge* (including any adjustment made to it in accordance with the *Rules*) payable to it by that *Co-ordinating Network Service Provider*.<sup>10</sup>

Bills for *modified load export charges* will be issued in accordance with the requirements specified in clause 6A.29A.4(b) of the *Rules* unless TasNetworks and the *Co-ordinating Network Service Provider* being billed agree to such terms and conditions for billing as may be considered appropriate.

---

<sup>10</sup> As at the date of publication, Victoria is the only *interconnected region* and AEMO is the *Co-ordinating Network Service Provider* for that *region*.

## **7.2 Billing for prescribed transmission services**

Consistent with clause 6A.27.1 of the *Rules*, TasNetworks will calculate the *transmission service* charges payable by *Transmission Network Users* for each *connection point* in accordance with the *transmission service* prices published under clause 6A.24.2 of the *Rules*.

Where charges are determined for *prescribed transmission services* from metering data, these charges will be based on kW or kWh (or MW or MWh) obtained from the metering data managed by *AEMO*.

TasNetworks will issue invoices to *Transmission Network Users* for *prescribed transmission services* which satisfy or exceed the minimum information requirements specified in clause 6A.27.2 of the *Rules* on a monthly basis or as specified in the customer's *connection agreement*.

Consistent with clause 6A.27.3 of the *Rules* a *Transmission Network User* must pay charges for *prescribed transmission services* properly charged to it and billed in accordance with this *pricing methodology* by the date specified on the invoice.

## **7.3 Payments between Transmission Network Service Providers**

If another *TNSP* is granted a Transmission Licence and is registered as a *Transmission Network Service Provider* by *AEMO* in the Tasmanian region, consistent with clause 6A.27.4 of the *Rules*, one *TNSP* will become the *Co-ordinating Network Service Provider* under clause 6A.29.1 of the *Rules*. The *TNSPs* will pay to each other relevant *TNSP* the revenue which is estimated to be collected during the following *financial year* by the first provider as charges for *prescribed transmission services* for the use of *transmission systems* owned by those other *TNSPs*.

Such payments will be determined by the *Co-ordinating Network Service Provider* for the region.

Financial transfers payable under clause 6A.27.4 of the *Rules* will be paid in equal monthly instalments or as documented in revenue collection agreements negotiated between the parties.

# **8 Prudential requirements**

## **8.1 Prudential requirements for prescribed transmission services**

Consistent with clause 6A.28.1 of the *Rules*, TasNetworks may require a *Transmission Network User* to establish *prudential requirements* for either or both *connection services* and *transmission use of system services*. These *prudential requirements* may take the form of, but need not be limited to, capital contributions, pre-payments or financial guarantees.

The requirements for such *prudential requirements* will be negotiated between the parties and specified in the applicable *transmission connection agreement*.



## **8.2 Capital contribution or prepayment for a specific asset**

Consistent with clause 6A.28.2 of the *Rules*, where TasNetworks is required to construct or acquire specific assets to provide *prescribed connection services* or *prescribed TUOS services* to a *Transmission Network User*, TasNetworks may require that *Transmission Network User* to make a capital contribution or prepayment for all or part of the cost of the new assets installed.

In the event that a capital contribution is required, any contribution made will be taken into account in the determination of *prescribed transmission service* prices applicable to that *Transmission Network User* by way of a proportionate reduction in the ORC of the asset(s) used for the allocation of *prescribed transmission service* charges or as negotiated between the parties.

In the event that a prepayment is required, any prepayment made will be taken into account in the determination of *prescribed transmission service* prices applicable to that *Transmission Network User* in a manner to be negotiated between the parties.

The treatment of such capital contributions or prepayments for the purposes of a *revenue determination* will, in all cases, be in accordance with the relevant provisions of the *Rules*.

## **9 Prudent discounts**

TasNetworks may, but is not required to, agree with a *Transmission Customer* to charge lower prices for the non-locational component of *prescribed TUOS services* and *prescribed common transmission services* provided to that *Transmission Customer*, than the prices determined in accordance with this *pricing methodology*.

TasNetworks notes that none of its *Transmission Customers* currently receive prudent discounts as at the date of this *pricing methodology*.

In the event that a *Transmission Customer* does receive a prudent discount in the future, TasNetworks will, in accordance with clause 6A.26.1(d)-(g) of the *Rules*, adjust the adjusted non-locational component of *prescribed TUOS services* and the *prescribed common transmission services* prices and charges to other customers for the amount of any anticipated *under-recovery amount* arising from prudent discounts applied.

## **10 Inter-regional transmission charging**

As noted in section 6.2, TasNetworks is the only *TNSP* in the Tasmanian region, which means that TasNetworks will calculate, bill and arrange for the payment of the *modified load export charge (MLEC)* in accordance with clause 6A.29A of the *Rules* and section 2.6 of the *Pricing Methodology Guidelines*.

As required by clause 6A.29A.3 of the *Rules*, TasNetworks will also calculate adjustments to the *MLEC* in accordance with clause 6A.23.3 of the *Rules*. For more details on *inter-regional transmission* charging refer to Appendix F of this *pricing methodology*.

## 11 Monitoring and compliance

As a regulated business, TasNetworks is required to maintain extensive compliance monitoring and reporting systems to ensure compliance with its Transmission Licence, *revenue determination*, the *Rules* together with numerous other legislative obligations.

In order to monitor and maintain records of its compliance with its approved *pricing methodology*, the *Pricing Principles for Prescribed Transmission Services*, and Part J of Chapter 6A of the *Rules*, TasNetworks will:

- maintain the specific obligations arising from Part J of Chapter 6A of the *Rules* in its compliance management system;
- maintain electronic records of the annual calculation of *prescribed transmission service prices* and supporting information; and
- periodically subject its *transmission pricing models* and processes to functional audit by suitably qualified persons.

## 12 Additional information requirements

A number of additional information requirements arise from the *Pricing Methodology Guidelines* which have not been covered elsewhere in this *pricing methodology*. In order to satisfy these requirements TasNetworks notes that it does not:

- consider transitional arrangements are necessary as a result of the implementation of the *pricing methodology*;
- have any applicable relevant derogations in accordance with chapter 9 of the *Rules*;  
or
- have any applicable transitional arrangements arising from chapter 11 of the *Rules*.

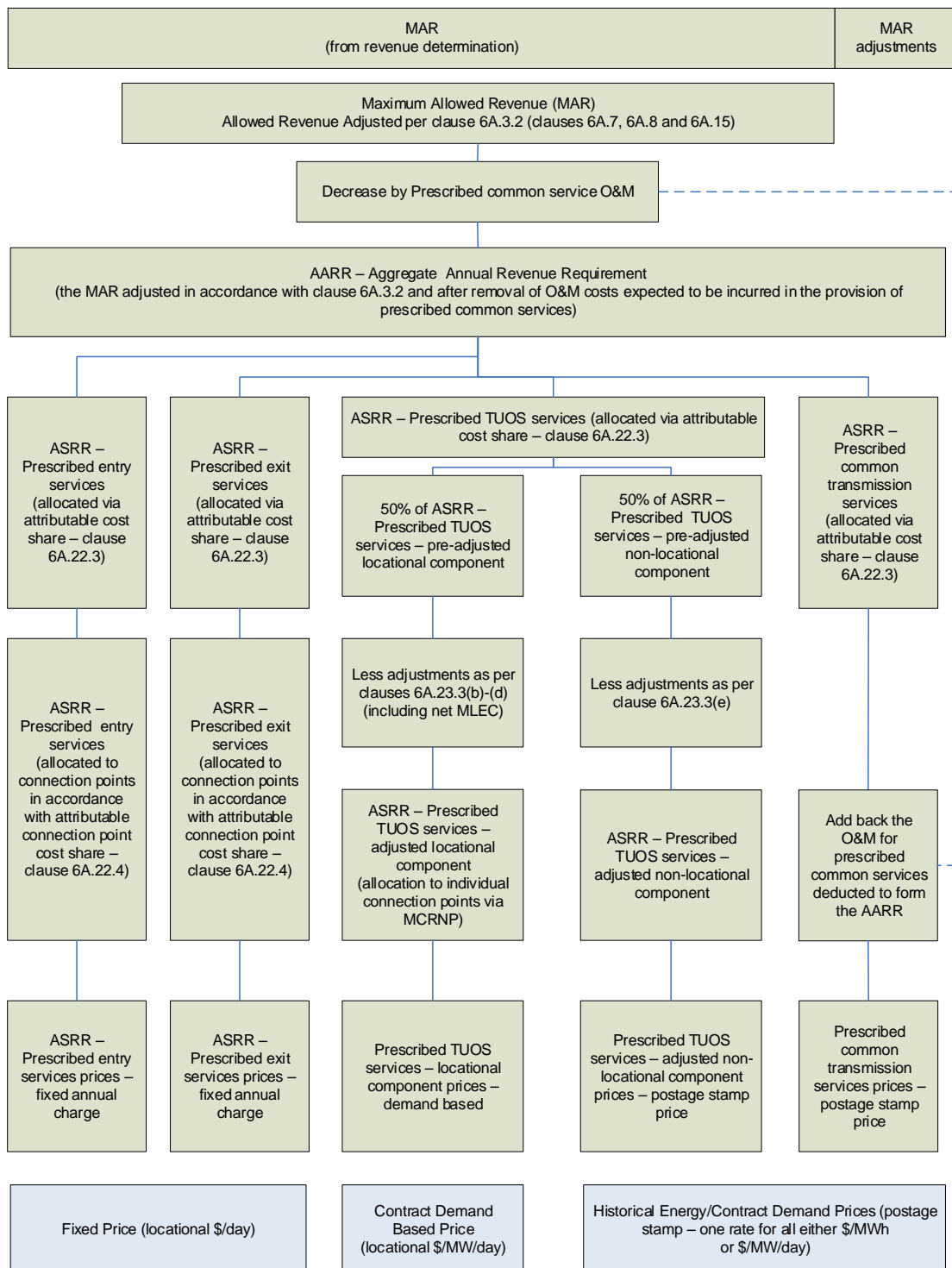
TasNetworks has not provided a confidential version of this *pricing methodology* to the AER in accordance with section 2.5 of the *Pricing Methodology Guidelines* and hence the provisions of section 2.1(n) of the *Pricing Methodology Guidelines* are not applicable.

## 13 Conclusion

TasNetworks' *pricing methodology* for the *regulatory control period* from 1 July 2019 to 30 June 2024 has been submitted to the AER in accordance with the requirements of chapter 6A of the *Rules* and the *Pricing Methodology Guidelines*.

# Appendix A: Overview of pricing process

Figure 1 Overview of pricing process



- Prices calculated on an annual basis
- Charges levied on a monthly basis
- Revenue reconciled to MAR annually with adjustment for under or over recovery in subsequent years

## Appendix B: Details of cost allocation process

A cost allocation process is used to assign the optimised replacement cost (ORC)<sup>11</sup> of all *prescribed transmission service* assets to each *category of prescribed transmission services* in a manner consistent with section 2.4 of the *Pricing Methodology Guidelines*.

The cost allocation process is summarised as follows:

### Step 1: Initial cost allocation

Assets and their ORCs are assigned to one of the following primary asset categories:

- *transmission lines*;
- *transformers*;
- circuit breakers;
- common service assets (such as communications, reactive support, office buildings.); and
- *substation* local assets (ancillary equipment, civil work, and establishment).

The following plant items are not separately identified in the ORC database and are incorporated into the ORC of the associated primary items above:

- bus work.

### Step 2: Allocation to categories of transmission services

Assets are allocated to the *categories of prescribed transmission services* in accordance with the provisions of section 2.4 of the *Pricing Methodology Guidelines*. In the case of a shared *connection* asset, such as a *transformer*, serving multiple *connection points* which may provide both *prescribed entry services* and *prescribed exit services*, the cost of the shared *connection* asset will be allocated to the appropriate *category or categories of prescribed transmission services* using an appropriate cost allocator. For example:

- *Generation* or *reactive plant* nameplate rating capacity or agreed maximum demand (AMD) supplied by the specified *transmission category of prescribed transmission services* as a percentage of the total capacity and *demand* of all *categories of prescribed transmission services* at that location: costs are attributable based on the capacity and/or AMD agreed upon by the customer(s);
- *unit of plant* method: costs are allocated based on the number of units of *plant* installed (typically circuit breakers) where these units of plant can be attributed to a particular *category of prescribed transmission service*; or
- as negotiated between the connecting parties.

---

<sup>11</sup> TasNetworks uses the optimised replacement cost of its assets sourced from its financial accounts. If these values are not available, TasNetworks will maintain an optimised replacement model of the *transmission network* to determine the appropriate optimised replacement cost of assets.

This process would also be adopted to allocate shared costs to individual *connection points*.

**Step 3: Priority ordering**

In the case of those costs which would be attributable to more than one *category of prescribed transmission services*, costs will be allocated in accordance with the provisions of clause 6A.23.2(d) of the *Rules*, having regard to the *stand-alone amount* costs associated with the provision of *prescribed TUOS services* and *prescribed common transmission services*, with the remainder being allocated to *prescribed entry services* and/or *prescribed exit services*. The implementation of the priority ordering process is detailed in Appendix D.

**Conclusion**

The shared *network* costs resulting from the cost allocation process are used as input to TPRICE, the *cost reflective network pricing* software that is approved by the AER for use by TNSPs in the NEM.

The entry cost, exit cost and common service costs are used as input to the calculation of *prescribed entry services prices*, *prescribed exit services prices* and *prescribed common transmission services prices*.

## Appendix C: Cost reflective network pricing methodology

The *cost reflective network pricing methodology* (*CRNP methodology*) involves the following steps:

- determining the costs of the individual *transmission network* assets in the optimised *transmission network*;
- determining the proportion of each individual *network element* utilised in providing a *transmission service* to each point in the *network* for specified operating conditions;
- determining the maximum flow imposed on each *transmission element* by *load* at each *connection point*;
- allocating the costs attributed to the individual *transmission elements* to *loads* based on the proportionate use of the elements; and
- determining the total cost (lump sum) allocated to each point by adding the share of the costs of each individual *network element* attributed to each point in the *network*.

### Allocation of generation to load

A major assumption in the use of the *CRNP methodology* is the definition of the *generation* source and the point where *load* is taken. The approach is to use the “electrical distance” to pair *generation* to *load*, in which a greater proportion of *load* at a particular location is supplied by *Generators* that are electrically closer than those that are electrically remote. In electrical engineering terminology the “electrical distance” is the impedance between the two locations, and this can readily be determined through a standard engineering calculation called the “fault level calculation”.

Once the assumption has been made as to the *Generators* that are supplying each *load* for a particular *load* and *generation* condition (time of *day*) it is possible to trace the flow through the *network* that results from supplying each *load* (or *Generator*). The use made of any element by a particular *load* is the ratio of the flow on the element resulting from the supply to this *load* to the total use of the *load* made by all *loads* and *Generators* in the *power system*.

### Operating conditions for cost allocation

The choice of operating conditions is important in developing prices using the *CRNP methodology* or *modified CRNP methodology*. TasNetworks has flexibility in the choice of operating conditions but notes that the *Rules* previously set out the principles that applied in determining the sample of operating conditions considered. Of particular note was the requirement that the operating conditions to be used were to include at least 10 *days* with highest system *demand*, to ensure that loading conditions, which impose peak flows on all *transmission elements*, were captured.

Clause S6A.3.2(3) of the *Rules* is less prescriptive, requiring that the allocation of dispatched *generation* to *loads* be over a range of actual operating conditions from the previous *financial year* and that the range of operating scenarios is chosen so as to include the conditions that result in most stress on the *transmission network* and for which *network* investment may be contemplated.

In selecting those operating scenarios it is important to recognise that the operating conditions that impose most stress on particular elements may occur at times other than for system peak *demand*.

### **Load and generation data**

Section 2.2(a) of the *Pricing Methodology Guidelines* requires that prices for the recovery of the locational component of *prescribed TUOS services* are based on demand at times of greatest utilisation of the *transmission network* and for which *network* investment is most likely to be contemplated, in accordance with clause 6A.23.4(b)(1) of the *Rules*.

The use made of the *network* by particular *loads* and *generators* will vary considerably depending on the *load* and *generation* conditions on the *network*. For this reason TasNetworks uses the full year of operating data (that is, either 365 or 366 days of half hourly data) as an appropriate set of operating conditions. The TPRICE capacity method of cost allocation (used by TasNetworks) automatically captures the *peak loading* conditions on *network elements* from the sample of operating conditions analysed.

Consistent with section 2.2(f) of the *Pricing Methodology Guidelines*, where actual operating conditions from the previous complete *financial year* are unavailable for a *connection point*, as would be the case for a new *connection point*, an estimate based on the *contract agreed maximum demand* and other characteristics of the *load* would be used to allocate costs to that *connection point*.

## Appendix D: Priority ordering methodology

### Rules requirements

Clause 6A.23.2(d) of the *Rules* requires that:

“Where, as a result of the application of the *attributable cost share*, a portion of the *AARR* would be attributable to more than one *category of prescribed transmission services*, that *attributable cost share* is to be adjusted and applied such that any costs of a *transmission system asset* that would otherwise be attributed to the provision of more than one *category of prescribed transmission services*, is allocated as follows:

- (1) to the provision of *prescribed TUOS services*, but only to the extent of the *stand-alone amount* for that *category of prescribed transmission services*;
- (2) if any portion of the costs of a *transmission system asset* is not allocated to *prescribed TUOS services*, under subparagraph (1), that portion is to be allocated to *prescribed common transmission services*, but only to the extent of the *stand-alone amount* for that *category of prescribed transmission services*; and
- (3) if any portion of the costs of a *transmission system asset* is not attributed to *prescribed transmission services* under subparagraphs (1) and (2), that portion is to be attributed to *prescribed entry services* and *prescribed exit services*.”

*Stand-alone amount* is defined as:

“For a category of *prescribed transmission services*, the costs of a *transmission system asset* that would have been incurred had that *transmission system asset* been developed, exclusively to provide that *category of prescribed transmission services*.”

Clause 11.6.11(c) of the *Rules* states the following:

“For the purposes of new Chapter 6A:

- (1) the costs of the *transmission system assets* that from time to time may be treated as:
  - (i) directly attributable to the provision of a *prescribed connection service*; or
  - (ii) incurred in providing a *prescribed connection service*,

to a *Transmission Network User* or a group of *Transmission Network Users* at a *transmission network connection point* is limited to the costs of the eligible assets which, from time to time, provide that *prescribed connection service*;

- (2) any costs of an existing asset or a replacement asset (or of any portion of an existing asset or a replacement asset) that:
  - (i) is not an eligible asset (other than as a result of clause 11.6.11(d)); and
  - (ii) is used by a *Transmission Network Service Provider* to provide *connection services* to a *Transmission Network User* or a group of *Transmission Network Users* at a *transmission network connection point*,



must be treated as costs that are directly attributable to the provision of, or are incurred in providing, *prescribed TUOS services* and, to avoid doubt, the services provided by those assets which would otherwise be *connection services* are taken to be *prescribed TUOS services*; and

- (3) the *stand-alone amount* for *prescribed TUOS services* is taken to include any portion of the costs referred to in clause 11.6.11(c)(2) that has not been allocated under clause 6A.23.2(d)(1)."

This provision effectively introduces a fourth step to the priority ordering requirement.

### Objective and general approach

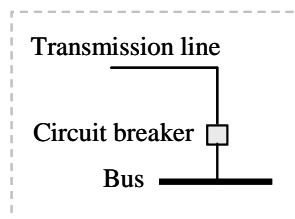
The allocation methodology relies on the assumption that *substation* infrastructure and establishment costs are proportionate to the number of *high-voltage* circuit breakers in the *substation*.

Based on this assumption the appropriate allocator for *substation* infrastructure and establishment costs for a stand-alone arrangement is the ratio of the number of *high voltage* circuit breakers<sup>12</sup> in the stand-alone arrangement to the number of *high voltage* circuit breakers in the whole *substation*.

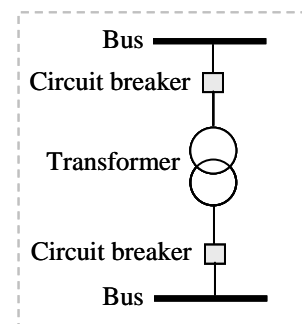
### Proposed methodology

As illustrated by the diagrams below, a “branch” is a collection of assets (for example, *transmission lines*, circuit breakers, capacitors, buses and *transformers*) that provide a *transmission service*.

**Figure 2 Branch with transmission line, bus and circuit breaker**

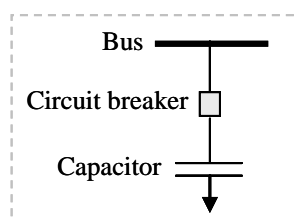


**Figure 3 Branch with transformer, circuit breaker and two busses**



<sup>12</sup> Low voltage circuit breakers are not considered in the stand-alone arrangements.

**Figure 4 Branch with capacitor, circuit breaker and bus**



**Step 1: Branch identification**

Identify the branches – being the *transmission lines, transformers*, major reactive devices and exits/entries in the *substation* which provide *prescribed TUOS services, prescribed common transmission services* and *prescribed entry services* or *prescribed exit services* – in the *substation*.

**Step 2: Allocation of circuit breakers to branches**

For each *high voltage* circuit breaker in the *substation*, identify the branches directly connected to it. Any circuit breaker that does not directly connect to a branch is excluded from allocation and all costs associated with it are added to the *substation* infrastructure and establishment cost.

Count the total number of circuit breakers directly connected to branches.

As a general rule, branches connecting *Distribution Network Service Providers (DNSPs)* are classified as *prescribed exit services* while branches connecting *generators* are classified as *prescribed entry service*. Assets providing *negotiated services* are not part of the regulatory asset base and fall outside the priority ordering process detailed in clause 6A.23.2(d) of the *Rules*.

**Step 3: Determination of stand-alone arrangements**

**Step 3.1: Stand-alone arrangements for prescribed TUOS services**

With reference to the number of *transmission lines* providing *prescribed TUOS services*, determine the number of circuit breakers required to provide TUOS services of an equivalent standard on a stand-alone basis. TasNetworks understands the stand-alone configuration should be the simplest *substation* configuration (in the absence of development) had the *substation* been developed to provide only *prescribed TUOS services*. This may be done by way of a look up of typical stand-alone configurations.

**Step 3.2: Stand-alone arrangements for prescribed common transmission services**

With reference to the number of *transmission lines* providing *prescribed TUOS services* and devices providing *prescribed common transmission services*, determine the number of circuit breakers required to provide *prescribed common transmission services* of an equivalent

standard on a stand-alone basis.<sup>13</sup> TasNetworks understands the stand-alone configuration to be the simplest *substation* configuration (in the absence of development) had the *substation* been developed to provide only *prescribed common transmission services*. This may be done by way of a look up of typical stand-alone configurations.

#### **Step 4: Allocation of substation infrastructure and establishment costs**

##### **Step 4.1. Allocation to prescribed TUOS services**

Allocate a portion of the *substation* infrastructure and establishment costs to *prescribed TUOS services* according to the ratio of the *high voltage* circuit breakers identified in step 3.1 to the total number of *high voltage* circuit breakers connected to branches in the *substation* identified in step 2.

##### **Step 4.2 Calculate the unallocated substation infrastructure costs after TUOS allocation**

Calculate the unallocated *substation* infrastructure cost by subtracting the amount calculated in step 4.1 from the total *substation* infrastructure amount. If the unallocated *substation* infrastructure cost is zero (that is, the *prescribed TUOS services* component of the *substation* infrastructure costs equals the total *substation* infrastructure amount), then no *substation* infrastructure costs would be allocated to *prescribed common transmission services*, *prescribed entry services* or *prescribed exit services*.

##### **Step 4.3 Allocation to prescribed common transmission services**

Allocate a portion of the *substation* infrastructure and establishment costs to *prescribed common transmission services* based on to the ratio of the *high voltage* circuit breakers providing *prescribed common transmission services* identified in step 3.2 to the total number of *high voltage* circuit breakers connected to branches in the *substation*. If the common service portion of *substation* infrastructure is greater than the unallocated costs calculated in step 4.2, then only the unallocated portion is attributed to *prescribed common transmission service*. In this instance, no *substation* infrastructure costs would be allocated to *prescribed entry services* or *prescribed exit services*.

##### **Step 4.4 Calculate the unallocated substation infrastructure costs after common service allocation**

Re-calculate the unallocated *substation* infrastructure cost by subtracting the amount calculated in step 4.3 from the amount calculated in step 4.2. If the unallocated *substation* infrastructure cost is zero (that is, the *prescribed TUOS services* and *prescribed common transmission services* components of the *substation* infrastructure costs equals the total *substation* infrastructure amount), then no *substation* infrastructure costs would be allocated to *prescribed entry services* or *prescribed exit services*.

---

<sup>13</sup> The number of *transmission lines* providing *prescribed TUOS services* is included in determining the number of circuit breakers required to provide *prescribed common transmission services* on a stand-alone basis because the *prescribed common transmission services* are provided to the entire *transmission network*, so they cannot be considered in isolation but must be connected to the *transmission network* through the *prescribed TUOS services*.

#### **Step 4.5 Allocation of remaining costs**

If any of the *substation* infrastructure and establishment costs have been allocated to *prescribed TUOS services* or *prescribed common transmission services* under steps 4.1 and 4.3 above, allocate the remaining costs (calculated in step 4.4) to *prescribed TUOS services*.<sup>14</sup> However, if none of the costs have been allocated to *prescribed TUOS services* or *prescribed common transmission services* under steps 4.1 or 4.3, allocate the remaining *substation* infrastructure and establishment costs (calculated in step 4.4) to each branch providing *prescribed entry services* or *prescribed exit services*. This allocation will be based on the ratio of the *high voltage* circuit breakers providing the *prescribed entry services* or *prescribed exit services* to the total number of *high voltage* circuit breakers, or in accordance with TasNetworks' Cost Allocation Methodology as appropriate.<sup>15</sup>

#### **Notes on process**

The following points should be noted:

- costs are only allocated in step 4 until fully allocated;
- consistent with clause 6A.23.2(d)(3) of the *Rules*, it is possible that no costs will be attributed to *prescribed entry services* or *prescribed exit services*;
- new and existing *negotiated service* assets are excluded from the analysis as any incremental establishment costs associated with such assets are taken to be included in the *negotiated services* charges on a causation basis; and
- the assessment of stand-alone arrangements only needs to be conducted once per *substation* except where changes to the configuration of the *substation* occur.

---

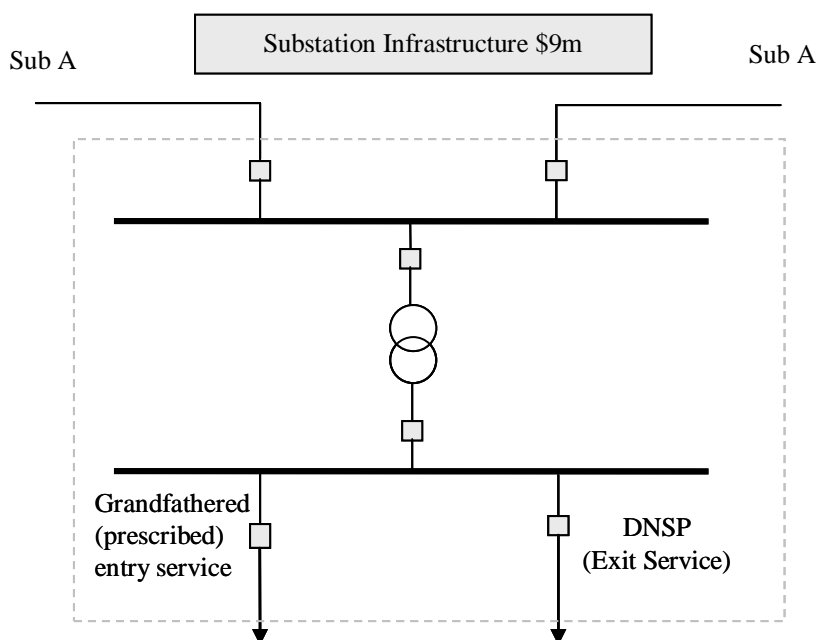
<sup>14</sup> See clause 11.6.11(c) of the *Rules*.

<sup>15</sup> The allocation between (or within) *prescribed entry services* or *prescribed exit services* is not included in the priority ordering process as it was not considered in clause 6A.23.3(d)(3) of the *Rules*.

## Appendix E: Examples of application of priority ordering process

### Example A

Figure 5 Substation configuration: example A



Step 1: The branches are two *transmission lines* to Sub A, a *prescribed exit service* to a DNSP, and a *prescribed entry service* to a Generator that is grandfathered under clause 11.6.11 of the Rules.<sup>16</sup>

Step 2: The total number of circuit breakers directly connected to branches is 6.

Step 3.1: No *prescribed TUOS services* are provided at this site.

Step 3.2: No *prescribed common transmission services* are provided at this site.

Step 4: Assume the total infrastructure cost that can be allocated to more than one *category of prescribed transmission service* is \$9 million.

<sup>16</sup> With the exception of Example A, these examples do not include reference to any *prescribed entry services* for two reasons (i) for the sake of simplicity and (ii) because the impact of a *prescribed entry service* is the same as for a *prescribed exit service*. Therefore, references in the examples to *prescribed exit service* are interchangeable with references to *prescribed entry services*. This interchangeability between *prescribed entry services* and *prescribed exit service* for the purpose of cost allocation under priority ordering is the reason that the table in each example includes reference to “Costs to entry and exit” even though the relevant example may only include *prescribed exit services*.

Furthermore, in a situation where there is more than one *prescribed entry services* and/or *prescribed exit service*, such as those shown in Examples A or E, the allocation of costs between the *prescribed entry services* and/or *prescribed exit service* is described in step 3 of Appendix B.

Step 4.1: Costs are allocated to *prescribed TUOS services* in the ratio of the number of circuit breakers in the stand-alone arrangement to the total number of circuit breakers. Therefore, the infrastructure cost allocated to TUOS =  $(0/6) \times \$9m = \$0m$

Step 4.2: Unallocated =  $\$9m - \$0m = \$9m$

Step 4.3: Costs are allocated to *prescribed common transmission service* in the ratio of the number of circuit breakers in the stand-alone arrangement to the total number of circuit breakers. Therefore, the infrastructure cost allocated to common service =  $(0/6) \times \$9m = \$0m$

Step 4.4: Unallocated =  $\$9m - \$0m = \$9m$

Step 4.5: As none of the infrastructure cost has been allocated in the preceding steps, the remaining (unallocated) cost is allocated to *prescribed entry services* and *prescribed exit services*. Therefore, the infrastructure cost allocated to *prescribed entry services* and *prescribed exit services* =  $\$9m$

**Table 8 Priority ordering allocation: example A**

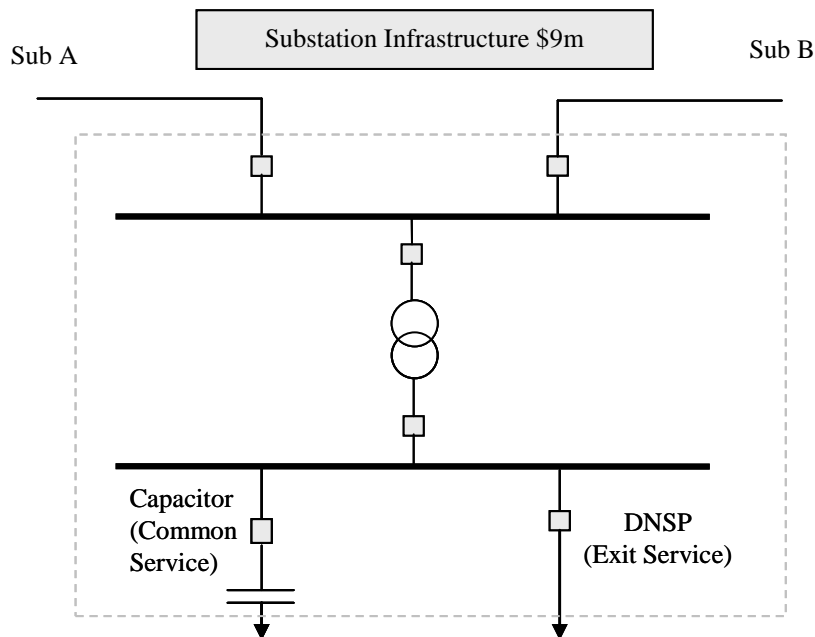
	Number	Allocated (\$)	Yet to be allocated (\$)
Substation infrastructure costs			9,000,000
Total breakers	6		
TUOS stand-alone breakers	0		
Costs to TUOS	0	0	9,000,000
Common service stand-alone breakers	0		
Costs to common service	0	0	9,000,000
Costs to entry and exit		9,000,000	0
<b>TOTAL</b>		<b>9,000,000</b>	<b>0</b>

**Table 9 Summary of cost allocation: example A**

	Allocated (\$)
Costs allocated to TUOS	0
Costs allocated to common service	0
Costs allocated to entry and exit	9,000,000
<b>TOTAL</b>	<b>9,000,000</b>

**Example B**

**Figure 6 Substation configuration: example B**



Step 1: The branches are *transmission lines* to Sub A and Sub B, a *prescribed exit service* to a DNSP, a *transformer* and a *capacitor*.

Step 2: The total number of circuit breakers directly connected to branches is 6.

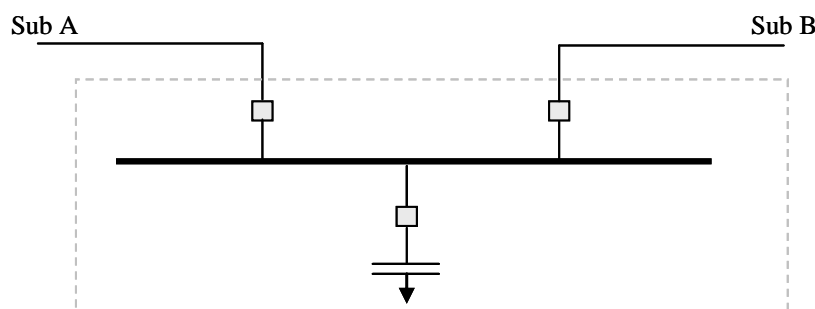
Step 3.1: The stand-alone arrangement for the provision of *prescribed TUOS services* to an equivalent standard is shown below and consists of 2 circuit breakers.

**Figure 7 Stand-alone prescribed TUOS services: example B**



Step 3.2: The stand-alone arrangement for the provision of *prescribed common transmission services* to an equivalent standard is shown below and consists of 3 circuit breakers.

**Figure 8 Stand-alone prescribed common transmission services: example B**



Step 4: Assume the total infrastructure cost that can be allocated to more than one *category of prescribed transmission service* is \$9 million.

Step 4.1: Costs are allocated to *prescribed TUOS services* in the ratio of the number of circuit breakers in the stand-alone arrangement to the total number of circuit breakers. Therefore, the infrastructure cost allocated to TUOS =  $(2/6) \times \$9\text{m} = \$3\text{m}$

Step 4.2: Unallocated =  $\$9\text{m} - \$3\text{m} = \$6\text{m}$

Step 4.3: Costs are allocated to *prescribed common transmission service* in the ratio of the number of circuit breakers in the stand-alone arrangement to the total number of circuit breakers. Therefore, the infrastructure cost allocated to common service =  $(3/6) \times \$9\text{m} = \$4.5\text{m}$

Step 4.4: Unallocated =  $\$6\text{m} - \$4.5\text{m} = \$1.5\text{m}$

Step 4.5: As part of the infrastructure cost has been allocated in the preceding steps, the remaining (unallocated) cost is allocated to *prescribed TUOS services*. Therefore, the total infrastructure cost allocated to *prescribed TUOS services* =  $\$1.5\text{m} + \$3\text{m} = \$4.5\text{m}$

**Table 10 Priority ordering allocation: example B**

	Number	Allocated (\$)	Yet to be allocated (\$)
Substation infrastructure costs			9,000,000
Total breakers	6		
TUOS stand-alone breakers	2		
Costs to TUOS	0.333	3,000,000	6,000,000
Common service stand-alone breakers	3		
Costs to common service	0.500	4,500,000	1,500,000
Costs to TUOS		1,500,000	0
<b>TOTAL</b>		<b>9,000,000</b>	<b>0</b>

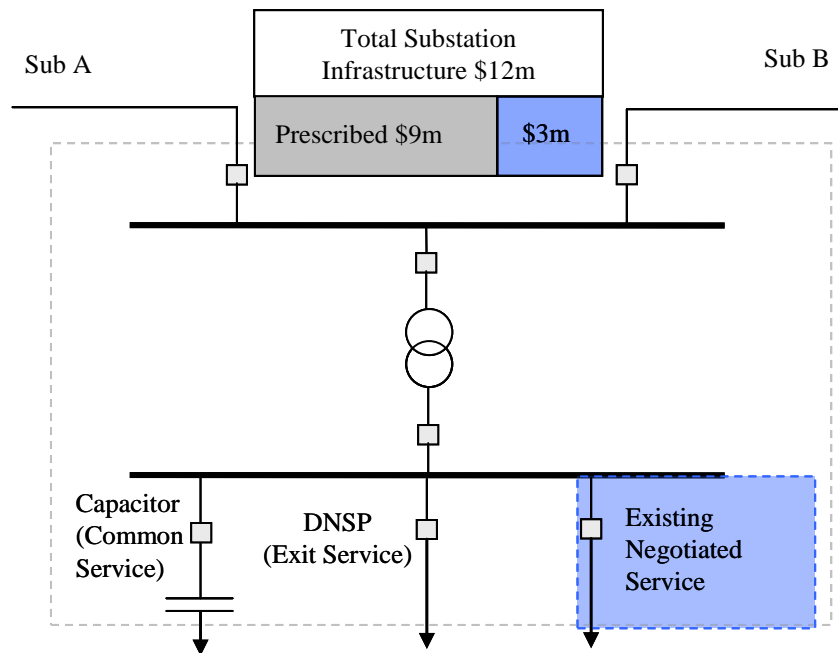
**Table 11 Summary of cost allocation: example B**

	Allocated (\$)
Costs allocated to TUOS	4,500,000
Costs allocated to common service	4,500,000
Costs allocated to entry and exit	0
<b>TOTAL</b>	<b>9,000,000</b>



**Example C**

**Figure 9 Substation configuration: example C**



Step 1: The branches are *transmission lines* to Sub A and Sub B, a *prescribed exit service* to a DNSP, a *transformer*, a capacitor and an existing *negotiated service*.

Step 2: The total number of circuit breakers directly connected to branches is 6 (none of the costs for *prescribed transmission services* are allocated to the *negotiated service*).

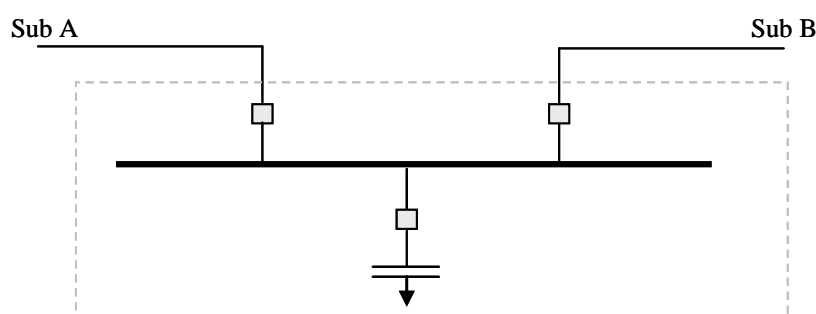
Step 3.1: The stand-alone arrangement for the provision of *prescribed TUOS services* to an equivalent standard is shown below and consists of 2 circuit breakers.

**Figure 10 Stand-alone prescribed TUOS services: example C**



Step 3.2: The stand-alone arrangement for the provision of *prescribed common transmission services* to an equivalent standard is shown below and consists of 3 circuit breakers.

**Figure 11 Stand-alone prescribed common transmission services: example C**



Step 4: Assume the total infrastructure cost is \$12m; \$3m of which is for the existing *negotiated service*, which does not form part of the regulatory asset base and is not governed by clause 6A.23.2(d) of the *Rules*. Therefore, the total infrastructure cost that can be allocated to more than one *category of prescribed transmission service* is \$9 million.

Step 4.1: Costs are allocated to *prescribed TUOS services* in the ratio of the number of circuit breakers in the stand-alone arrangement to the total number of circuit breakers. Therefore, the infrastructure cost allocated to TUOS =  $(2/6) \times \$9m = \$3m$

Step 4.2: Unallocated =  $\$9m - \$3m = \$6m$

Step 4.3: Costs are allocated to *prescribed common transmission service* in the ratio of the number of circuit breakers in the stand-alone arrangement to the total number of circuit breakers. Therefore, the infrastructure cost allocated to common service =  $(3/6) \times \$9m = \$4.5m$

Step 4.4: Unallocated =  $\$6m - \$4.5m = \$1.5m$

Step 4.5: As part of the infrastructure cost has been allocated in the preceding steps, the remaining (unallocated) cost is allocated to *prescribed TUOS services*. Therefore, the infrastructure cost allocated to prescribed TUOS services =  $\$1.5m + \$3m = \$4.5m$

**Table 12 Priority ordering allocation: example C**

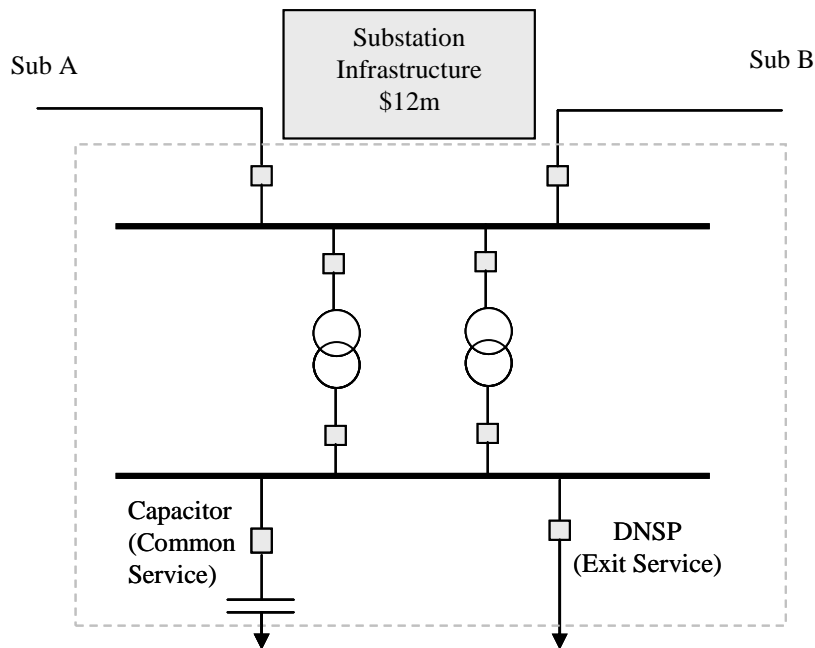
	Number	Allocated (\$)	Yet to be allocated (\$)
Substation infrastructure costs			9,000,000
Total breakers	6		
TUOS stand-alone breakers	2		
Costs to TUOS	0.333	3,000,000	6,000,000
Common service stand-alone breakers	3		
Costs to common service	0.500	4,500,000	1,500,000
Costs to TUOS		1,500,000	0
<b>TOTAL</b>		<b>9,000,000</b>	<b>0</b>

**Table 13 Summary of cost allocation: example C**

	Allocated (\$)
Costs allocated to TUOS	4,500,000
Costs allocated to common service	4,500,000
Costs allocated to entry and exit	0
<b>TOTAL</b>	<b>9,000,000</b>

**Example D**

**Figure 12 Substation configuration: example D**



Step 1: The branches are *transmission lines* to Sub A and Sub B, a *prescribed exit service* to a DNSP, two *transformers* and a capacitor.

Step 2: The total number of circuit breakers directly connected to branches is 8.

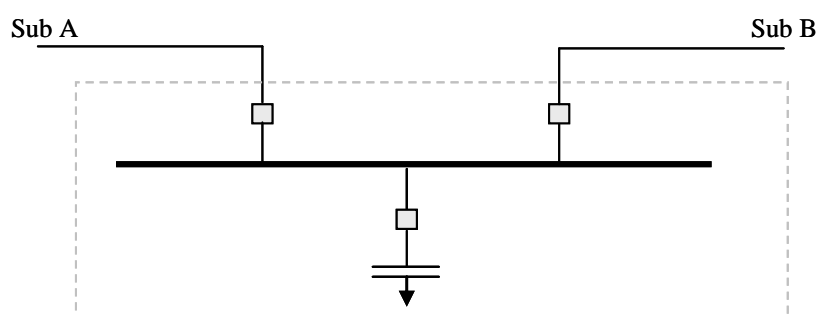
Step 3.1: The stand-alone arrangement for the provision of *prescribed TUOS services* to an equivalent standard is shown below and consists of 2 circuit breakers.

**Figure 13 Stand-alone prescribed TUOS services: example D**



Step 3.2: The stand-alone arrangement for the provision of *prescribed common transmission services* to an equivalent standard is shown below and consists of 3 circuit breakers.

**Figure 14 Stand-alone prescribed common transmission services: example D**



Step 4: Assume the total infrastructure cost that can be allocated to more than one *category of prescribed transmission service* is \$12 million.

Step 4.1: Costs are allocated to *prescribed TUOS services* in the ratio of the number of circuit breakers in the stand-alone arrangement to the total number of circuit breakers. Therefore, the infrastructure cost allocated to TUOS =  $(2/8) \times \$12\text{m} = \$3\text{m}$

Step 4.2: Unallocated =  $\$12\text{m} - \$3\text{m} = \$9\text{m}$

Step 4.3: Costs are allocated to *prescribed common transmission service* in the ratio of the number of circuit breakers in the stand-alone arrangement to the total number of circuit breakers. Therefore, the infrastructure cost allocated to common service =  $(3/8) \times \$12\text{m} = \$4.5\text{m}$

Step 4.4: Unallocated =  $\$9\text{m} - \$4.5\text{m} = \$4.5\text{m}$

Step 4.5: As part of the infrastructure cost has been allocated in the preceding steps, the remaining (unallocated) cost is allocated to *prescribed TUOS services*. Therefore, the infrastructure cost allocated to *prescribed TUOS services* =  $\$4.5\text{m} + \$3\text{m} = \$7.5\text{m}$

**Table 14 Priority ordering allocation: example D**

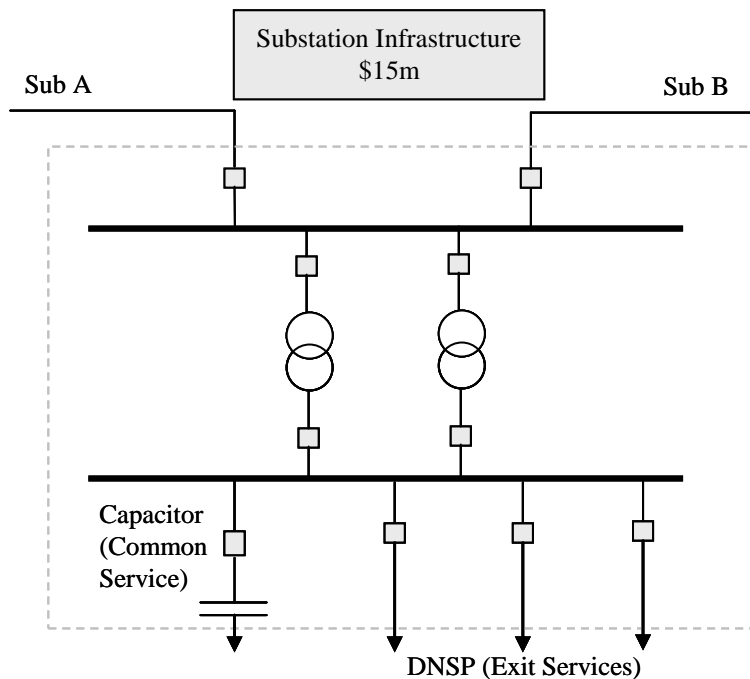
	Number	Allocated (\$)	Yet to be allocated (\$)
Substation infrastructure costs			12,000,000
Total breakers	8		
TUOS stand-alone breakers	2		
Costs to TUOS	0.250	3,000,000	9,000,000
Common service stand-alone breakers	3		
Costs to common service	0.375	4,500,000	4,500,000
Costs to TUOS		4,500,000	0
<b>TOTAL</b>		<b>12,000,000</b>	<b>0</b>

**Table 15 Summary of cost allocation: example D**

	Allocated (\$)
Costs allocated to TUOS	7,500,000
Costs allocated to common service	4,500,000
Costs allocated to entry and exit	0
<b>TOTAL</b>	<b>12,000,000</b>

**Example E**

**Figure 15 Substation configuration: example E**



Step 1: The branches are *transmission lines* to Sub A and Sub B, *prescribed exit services* to DNSP(s), two *transformers* and a capacitor.

Step 2: The total number of circuit breakers directly connected to branches is 10.

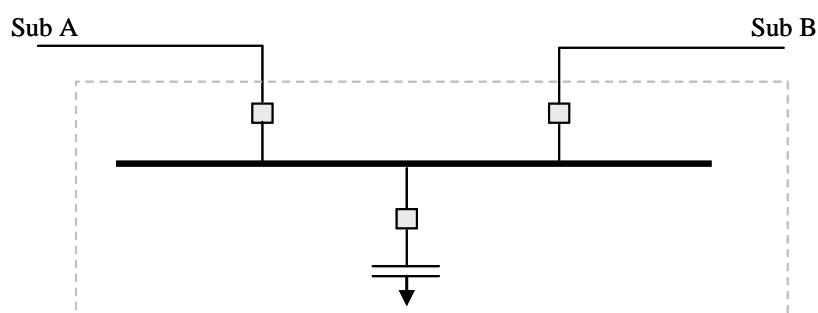
Step 3.1: The stand-alone arrangement for the provision of *prescribed TUOS services* to an equivalent standard is shown below and consists of 2 circuit breakers.

**Figure 16 Stand-alone prescribed TUOS services: example E**



Step 3.2: The stand-alone arrangement for the provision of *prescribed common transmission services* to an equivalent standard is shown below and consists of 3 circuit breakers.

**Figure 17 Stand-alone prescribed common transmission services: example E**



Step 4: Assume the total infrastructure cost that can be allocated to more than one *category of prescribed transmission service* is \$15 million.

Step 4.1: Costs are allocated to *prescribed TUOS services* in the ratio of the number of circuit breakers in the stand-alone arrangement to the total number of circuit breakers. Therefore, the infrastructure cost allocated to TUOS =  $(2/10) \times \$15\text{m} = \$3\text{m}$

Step 4.2: Unallocated =  $\$15\text{m} - \$3\text{m} = \$12\text{m}$

Step 4.3: Costs are allocated to *prescribed common transmission service* in the ratio of the number of circuit breakers in the stand-alone arrangement to the total number of circuit breakers. Therefore, the infrastructure cost allocated to common service =  $(3/10) \times \$15\text{m} = \$4.5\text{m}$

Step 4.4: Unallocated =  $\$12\text{m} - \$4.5\text{m} = \$7.5\text{m}$

Step 4.5: As part of the infrastructure cost has been allocated in the preceding steps, the remaining (unallocated) cost is allocated to *prescribed TUOS services*. Therefore, the infrastructure cost allocated to *prescribed TUOS services* =  $\$7.5\text{m} + \$3\text{m} = \$10.5\text{m}$

**Table 16 Priority ordering allocation: example E**

	Number	Allocated (\$)	Yet to be allocated (\$)
Substation infrastructure costs			15,000,000
Total breakers	10		
TUOS stand-alone breakers	2		
Costs to TUOS	0.200	3,000,000	12,000,000
Common service stand-alone breakers	3		
Costs to common service	0.300	4,500,000	7,500,000
Costs to TUOS		7,500,000	0
<b>TOTAL</b>		<b>15,000,000</b>	<b>0</b>

**Table 17 Summary of cost allocation: example E**

	Allocated (\$)
Costs allocated to TUOS	10,500,000
Costs allocated to common service	4,500,000
Costs allocated to entry and exit	0
<b>TOTAL</b>	<b>15,000,000</b>

## Appendix F: Inter-regional transmission charging

### Introduction

The *inter-regional transmission* charging arrangement allows *TNSPs* to levy a *MLEC* on *TNSPs* in neighbouring *regions*. *Transmission* load customers would subsequently pay a share of the costs of *transmission* used to import electricity into their *region* from neighbouring *regions*.

As noted in section 6.2, TasNetworks is the only *Transmission Network Service Provider (TNSP)* in the Tasmanian *region*, which means that TasNetworks will calculate, bill and arrange for the payment of the *modified load export charge (MLEC)* in accordance with clause 6A.29A of the *Rules* and section 2.6 of the *AER's Pricing Methodology Guidelines*.

TasNetworks will publish details of all *MLECs* to apply in the following *financial year* on its website by 15 February each year consistent with clause 6A.24.2(b) of the *Rules*.

### Overview of the process

An overview of the process to calculate the *MLEC* is shown in Figure 18.

The steps involved to calculate the *MLEC* are:

#### Step 1:

The *AARR* will be calculated as described in section 6.3 of this *pricing methodology*.

The allocation of the *AARR* to each of the *categories of prescribed transmission services* will be calculated as described in section 6.7 of this *pricing methodology*. This will determine the *ASRR* to be recovered from *prescribed TUOS services*. The calculations in Step 1 are the same as for calculating *transmission* prices.

#### Step 2:

As required by clause 6A.29A.2(a)(1) of the *Rules*, the *MLEC* is to be calculated from 50 per cent of the *ASRR* for *prescribed TUOS services*.

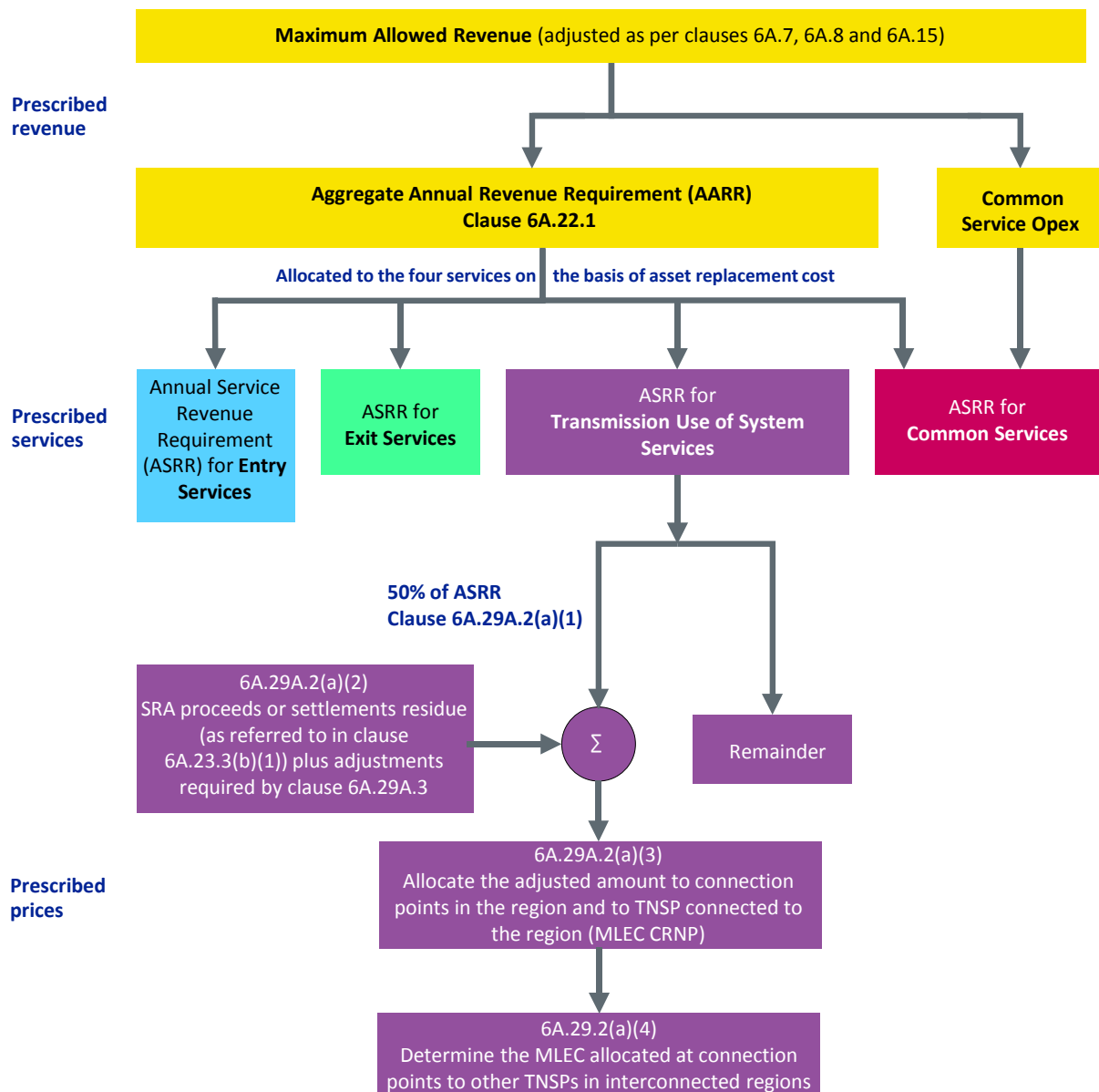
#### Step 3:

The amount determined in Step 2 is the *TUOS* revenue to be recovered on a locational basis and is adjusted in accordance with clause 6A.29A.2(a)(2) of the *Rules* by:

- subtracting estimated *inter-regional settlements residue* auction proceeds (which are nil for Tasmania);
- subtracting a portion of the *settlements residue* as referred to in clause 6A.23.3(b)(1) of the *Rules* (which is also nil for Tasmania); and
- including any adjustments as required by clause 6A.29A.3 of the *Rules*.



**Figure 18 Overview of process to calculate the MLEC**



**Step 4:**

Clause 6A.29A.2(a)(3) of the *Rules* requires the adjusted amount from Step 3 to be allocated to *connection points of transmission customers* in the Tasmanian *region* and to *CNSPs interconnected* to the Tasmanian *region* as if they were *connected as transmission customers*. This allocation will be made on a proportionate use of *transmission system assets*. Consistent with the requirements of clause 6A.29A.2(a)(3) of the *Rules*, TasNetworks will only use the *MLEC CRNP methodology* for estimating the proportionate use of the relevant *transmission system assets*.

TasNetworks applies the *CRNP methodology* using the TPRICE *cost reflective network pricing* software used by all *TNSPs* in the *NEM*.

The *CRNP methodology* requires three sets of input data:

- an electrical (load flow) model of the *network*;

- a cost model of the *network*; and
- a set of *load/ generation* patterns.

Appendix C of this *pricing methodology* describes the *CRNP methodology* in more detail.

The key requirements for *MLEC CRNP methodology* are:

- *MLEC* is to be determined using standard *CRNP* approach;
- all *transmission elements* are to be included;
- all half hour periods in the previous full *financial year* are to be used; and
- peak usage of assets must be used.

For each *regulatory year* TasNetworks will calculate the *MLEC* using the *MLEC CRNP methodology*. The calculation will use *generation* and *load* data from the previous *financial year* completed at the time the *MLEC CRNP* is being calculated.

#### **Step 5:**

Clause 6A.29A.2(a)(4) of the *Rules* requires the *MLEC* to be recovered from *CNSPs* in *interconnected regions* to be the amount allocated to *connection points* to neighbouring *regions* as determined in Step 4.

#### **Billing the modified load export charge**

TasNetworks will issue a monthly bill to *AEMO* (as the *CNSP* in the only *interconnected region*) for the *MLEC* amount payable to TasNetworks in accordance with clause 6A.29A.4(a) of the *Rules*. The monthly bills will include any adjustments made in accordance with clause 6A.29A.3 of the *Rules*.

In accordance with clause 6A.29A.4(b) of the *Rules*, the monthly bill will include:

- the total annual estimate of *MLEC* payable by the *CNSP*;
- details of the *MLEC CRNP* allocation and the adjustments as specified in clauses 6A.29A.3 and 6A.23.3(f) of the *Rules*; and
- the monthly instalment amount.

#### **Worked example – Modified Load Export Charge**

The example uses the same figures referred to in the examples of this *pricing methodology*.

#### **Step 1 – Aggregate annual revenue requirement (AARR)**

In accordance with clause 6A.22.1 of the *Rules*, the *maximum allowed revenue* is adjusted:

- (a) in accordance with clause 6A.3.2 of the *Rules*, and
- (b) by subtracting the operating and maintenance costs expected to be incurred in the provision of *prescribed common transmission services*; and
- (c) by any allocation as agreed between *Transmission Network Service Providers* in accordance with clause 6A.29.3 of the *Rules*.

This example assumes that the *maximum allowed revenue* is \$8,900,000.

**Table 18 Derivation of AARR to be allocated to the four services**

Derivation	Amount
Maximum allowed revenue	8,900,000
Total adjustments for: <ul style="list-style-type: none"> <li>network support pass through;</li> <li>cost pass through;</li> <li>payments under the service target performance incentive scheme; and</li> <li>contingent projects</li> </ul>	+100,000
Deduct operating and maintenance expenditure (incurred in the provision of prescribed common services)	-1,000,000
<b>AARR to be allocated</b>	<b>8,000,000</b>

**Step 2 – Annual service revenue requirement**

Similar to the calculation example in section 6.7 of this *pricing methodology*, the *ASRR* for each *category of prescribed transmission service* is calculated as shown in Table 19.

**Table 19 Asset allocations to service categories**

Category	Asset value (\$)	Cost share
Exit service	10,000,000	0.10
Entry service	5,000,000	0.05
TUOS service	65,000,000	0.65
Common service	20,000,000	0.20
<b>Total</b>	<b>100,000,000</b>	<b>1.00</b>

The cost share percentages shown in Table 19 are used to allocate the revenue to be recovered from each *category of prescribed transmission service*. In accordance with the adjustments set out in Table 18, Table 20 shows that the revenue to be allocated (the *AARR*) is \$8,000,000.

**Table 20 Calculation of Annual Service Revenue Requirements (ASRR)**

Category	Cost share	ASRR to be recovered from each service (\$)
Exit service	0.10	800,000
Entry service	0.05	400,000
TUOS service	0.65	5,200,000
Common service	0.20	1,600,000
<b>Total</b>	<b>1.00</b>	<b>8,000,000</b>

Clause 6A.29A.2(a)(1) of the *Rules* then requires 50 per cent of the *ASRR* for *prescribed TUOS services* to be calculated:

**Table 21 Calculation of Annual Service Revenue Requirements (ASRR) for MLEC**

Category	Asset value (\$)
50% of TUOS service	2,600,000

**Step 3 – Adjustment for settlement residue auction proceeds**

For this example the *settlement residue* auction proceeds and other adjustments are assumed to be zero.

**Step 4 – Standard CRNP Calculation**

An electrical model of the Tasmanian *transmission network* is set-up including all *transmission elements*. The TPRICE software is used to calculate the allocation of costs based on a proportionate use of *transmission system* assets.

For the Tasmanian *transmission network*, TPRICE is used to determine the cost allocation for each *connection point* to another *region*.

**Table 22 Standard CRNP allocation and interconnector cost share**

Connection Point	CRNP ORC allocation	Cost share
George Town	6,500,000	0.10
<b>Total for interconnector connection points</b>	<b>6,500,000</b>	<b>0.10</b>
<b>Total for all connection points</b>	<b>65,000,000</b>	

**Step 5 – Modified load export charge to be recovered**

The revenue to be recovered is pro-rated using the adjusted ASRR from Step 2.

**Table 23 Modified load export charge**

Connection Point	Cost share	Revenue to be recovered from each connection point (\$)
George Town	0.10	260,000
MLEC for the Victorian region	0.10	260,000