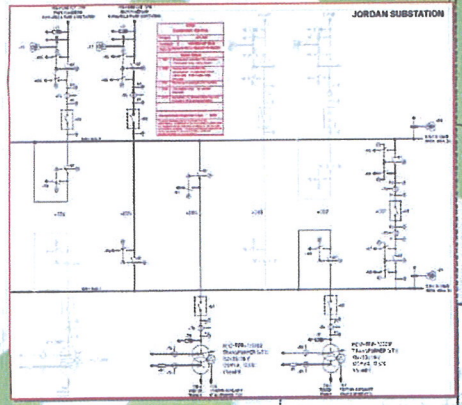
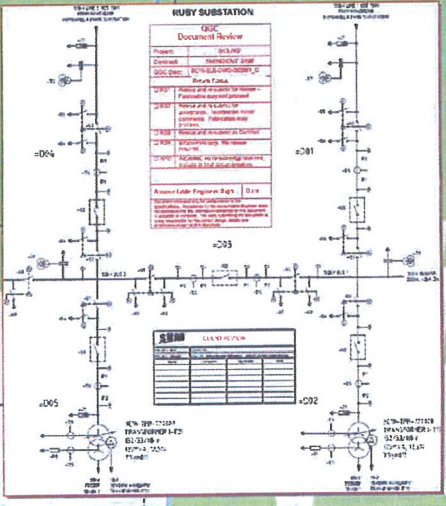


- Legend**
- ▲ Field Compression Station
 - ★ FCS - to be confirmed
 - Central Processing Plant
 - ⚡ Substations
 - Wide Area Network Towers
 - ⊕ Power Stations
 - + Cased and Abandoned Well
 - ⊕ Capped Well
 - ⊕ Core Hole
 - ⊕ CSG Well
 - ⊕ Re-Inject Well
 - ⊕ TGS Well
 - ⊕ Water Well
 - Proposed Gas Collection Header - Rev L
 - 330kV Queensland NSW Interconnector - Existing
 - 275kV Powerlink Queensland - Proposed
 - 275kV Powerlink Queensland - Existing
 - 132kV Powerlink Queensland - Proposed
 - 132kV Ergon Energy - Existing
 - 132kV QGC - Proposed
 - 110kV Ergon Energy - Existing
 - 33kV UG QGC Pre 2014 - Proposed
 - 33kV UG QGC Post 2014 - Proposed (Indicative Only)
 - Western Downs to Columboola Transmission Line Buffer
 - Western Downs to Columboola Transmission Line
 - Proposed UIC - Rev H



Electricity Infrastructure - Southern Area

- State Forest
- QGC PL/PLA
- QGC Field

