



**Murraylink Transmission
Company Pty Ltd**

Cost Allocation
Methodology

Effective
July 2013 to June 2023

Contents

1	Introduction	1
1.1	Scope of Methodology	2
1.2	Overview of Approach	2
1.3	Implementation and Accountabilities	2
2	Murraylink's Transmission Services and Costs	4
2.1	Transmission Services	4
2.2	Transmission Costs	4
3	Allocation of Costs to Murraylink	5
3.1	EII Shared Costs	5
3.2	EII's Asset Categories	6
A	Directors' Statement	7
B	EII Assets and Asset Categories	8
C	Cost Allocation Summary Tables	9

Amendment Record

Version	Date
01	18 April 2008
02	28 May 2008
03	8 July 2008
04	13 October 2009
05	19 November
06	5 April 2010

1 Introduction

The Murraylink asset is owned by the Murraylink Transmission Partnership. The Murraylink Transmission Partnership ABN is 79 181 207 909. The Murraylink partners are beneficially owned by Energy Infrastructure Investments Pty Limited (EII).

EII is an energy infrastructure investment company which owns electricity interconnectors (including Directlink), gas fired power generation, coal seam gas processing plants and gas pipelines. EII is owned by:

- Marubeni Corporation (49.9%) – a Japanese Company with businesses across a wide range of industrial sectors internationally. Marubeni has interests in approximately 6,300 MW of generation capacity around the world, including 1,000 MW in Australia, through interests in the Milmerran Power Station in Queensland and the Smithfield Cogeneration Plant in New South Wales;
- Osaka Gas (30.2%) – has energy investments in over 56,000 km of gas transmission and distribution pipelines in Japan and an interest in approximately 5,200 MW of power generation in Japan, USA and Europe; and
- APA Group (19.9%) - APA is a major owner and operator of energy infrastructure in Australia owning over 12,000km of gas transmission pipelines and over 2,500 km of gas distribution networks.

The Murraylink asset is operated and maintained by the APA Group under contractual arrangements. The primary contract is the Management, Operations and Maintenance and Commercial Services Agreement (MOMCSA) . Under the MOMCSA, APA provides the following services to EII, at a margin on all relevant costs, in respect of its asset portfolio (refer to Appendix B):

- management, operating and maintenance;
- liaison with third parties;
- administration;
- procurement;
- project work; and
- litigation.

APA also provides commercial services (financial management and reporting, legal and regulatory and project management services) which are provided on a fixed fee basis.

EII is an investment vehicle and as such has no employees.

Murraylink is a Direct Current transmission link which interconnects the South Australia and Victoria AC power grids.

Clause 6A.19.4(a) *National Electricity Rules* (NER) requires the Murraylink Transmission Partnership (the *Transmission Network Service Provider*) to submit to the *Australian Energy Regulator* (AER) for its approval a document setting out its

proposed cost allocation method to manage the allocation of direct and shared costs to its transmission service.

Murraylink's proposed cost allocation methodology has been developed in accordance with the AER's *Electricity Transmission Network Service Providers Cost Allocation Guidelines* (the Guidelines).

1.1 *Scope of Methodology*

Murraylink's proposed cost allocation methodology covers the allocation of direct and shared costs to its transmission service, as required by clause 6A.19.2 of the NER. The electricity transmission service provided by Murraylink, the costs associated with this service and the method for allocating the costs is set out in sections 2 and 3 below.

The proposed cost allocation methodology also covers the allocation of management and commercial services charges which are charged to EII by the APA Group in accordance with the MOMCSA Agreement and then allocated to Murraylink as one of the EII assets.

The broad structure of EII, the nature of the services provided to Murraylink under the MOMCSA Agreement and the basis for allocating the costs associated with those services are outlined in the Appendices B and C.

1.2 *Overview of Approach*

The proposed approach is the cost allocation methodology which will be used to prepare Murraylink's regulatory accounts, which will be submitted annually to the AER on the basis of a financial year ending on 31 December. This method essentially involves:

- costs directly associated with the operation and maintenance of Murraylink which are directly attributed to the Murraylink Transmission Partnership; and
- costs associated with the provision of other commercial services under MOMCSA which are allocated by EII to the Murraylink Transmission Partnership using the allocation rules outlined in Appendix C.

Section 3 provides information on the nature of each shared cost item and where and how it is allocated, in sufficient detail to enable the cost allocation to be replicated by the AER or an independent third party.

1.3 *Implementation and Accountabilities*

The proposed cost allocation methodology will be used to prepare Murraylink's regulatory accounts, which will be submitted annually to the AER on the basis of a financial year ending on 31 December. The proposed cost allocation methodology will apply once it is approved by the AER, it will be used to prepare Murraylink's regulatory accounts each reporting period thereafter, until revisions to this methodology are approved.

All direct and shared costs are allocated in accordance with Murraylink's approved cost allocation methodology and recorded in EII's financial systems, which are maintained by APA. This information will be used to prepare Murraylink's:

- regulatory accounts;
- forecast operating expenditure;
- forecast capital expenditure;
- the certified annual statement (in accordance with clause 6A. 17.1 (a) of the NER); and
- actual or estimated capital expenditure for the purposes of increasing the value of its regulatory asset base.

Murraylink's cost allocation methodology will be updated (subject to AER approval) and maintained by the Regulatory Manager, APA Group acting on behalf of EII and will be applied by APA Group officers acting on behalf of EII, who report to the APA Group Chief Financial Officer.

EII, and APA acting on behalf of EII, will allocate costs on a substance over legal form basis, but will not do so in such a way that contravenes any legal requirement.

Internal monitoring and reporting on the application of the cost allocation methodology will be conducted on an ongoing basis by both the Regulatory Manager, APA Group acting on behalf of EII and officers reporting to the APA Group Chief Financial Officer acting on behalf of EII.

Independent verification (audit), on the application of and compliance with the cost allocation methodology, will be conducted on an annual basis, or as otherwise required, as part of Murraylink's Regulatory Financial Report. The verification process will include an assessment of the:

- maintenance of financial records on the allocation of direct and shared costs;
- allocation of direct and shared costs in accordance with Murraylink's approved cost allocation methodology;
- arithmetic accuracy; and
- reconciliation to statutory financial statements.

This report is prepared in accordance with the AER's Electricity Transmission Network Service Providers: Information Guidelines .

A signed copy of Murraylink's Director's Statement which confirms the accuracy of the proposed approach and Murraylink's intention to comply with the cost allocation methodology as approved by the AER is included in Appendix A.

2 Murraylink's Transmission Services and Costs

2.1 *Transmission Services*

Murraylink provides one Prescribed Transmission Service which is made available (exclusively) to AEMO for the purposes of dispatch, to ensure the efficient and secure flow of energy.

Murraylink does not provide any services that are classified as negotiated services.

The transfer of the Murraylink Transmission Partnership to EII was completed on 12 December 2008.

The cost allocation guidelines therefore provide an explanation of how costs are allocated to Murraylink's Prescribed Transmission Service. Furthermore, regardless of the entity in which costs are incurred they are to be allocated in accordance with the cost allocation methodology. This requirement extends to the MOMCSA Agreement, where APA must comply with the approved cost allocation methodology when performing financial management and reporting on behalf of EII.

In the event that, in the future, Murraylink does provide negotiated or non-regulated services any associated costs will be allocated in accordance with the AER's Cost Allocation Guidelines and National Electricity Rule's Cost Allocation Principles.

2.2 *Transmission Costs*

Murraylink's electricity transmission costs comprise the following components:

- direct network operations, including operating expenses, communications, energy costs and connection costs;
- direct maintenance costs;
- direct other costs, including insurance, contracted services, taxes, travel costs, utilities expenses, accounting fees and legal fees, and other direct expenses which can be attributed to the asset;
- an allocation of the costs incurred by EII for other commercial services under the MOMCSA;
- additional costs incurred by APA outside of the MOMCSA which may then incur an additional charge on EII. These costs may either be directly attributed to Murraylink or may be attributed to EII and then allocated to Murraylink.

Each of the direct costs identified above are incurred by Murraylink and attributed to the prescribed transmission service.

3 Allocation of Costs to Murraylink

EII's corporate structure and asset portfolio is represented in Appendix B. The revenue stream earned from each of these assets represents a mix of regulated and negotiated (commercial) returns.

Section 2.2.6 of the Guidelines requires the cost allocation methodology to be consistent with the Transmission Network Ring-fencing Guidelines. As shown in Appendix B, EII owns/performs a related business (as defined in the ring-fencing guidelines) as it owns generation assets.

In accordance with clause 7.4 of the Ring-fencing Guidelines, shared costs between ring-fenced services will be allocated in accordance with Murraylink's approved cost allocation methodology.

Section 3.1 below explains the basis of the allocation of shared costs, notably the MOMCSA cost, between Murraylink and other EII's related businesses. This allocation approach is used consistently across all assets owned by EII.

3.1 *EII Shared Costs*

The shared corporate services provided by the APA Group to EII under the MOMCSA include the following functions:

- Accounting, Treasury and Taxation;
- Operations Management;
- Commercial Management;
- Engineering Management;
- Strategic Planning;
- Legal and Regulatory; and
- Company Secretariat.

A monthly cost allocation is undertaken for all shared costs, the bulk of which are incurred under the MOMCSA. These costs are allocated to an individual asset as a percentage (%) of the revenue the asset contributes to EII's total revenue. This should result in the fees only being allocated once, that is the fees are not over – recovered.

That is, MOMCSA costs are allocated, on a percentage basis, to individual EII assets. This should result in these costs only being allocated once and EII has no intention to allocate costs more than once.

In accordance with clause 2.2.5 of the AER cost allocation guidelines Murraylink will not allocate any costs more than once.

Based on historical performance, Murraylink believes revenue is an appropriate driver for allocating shared corporate costs as the services provided by means of the shared cost are necessary for the generation of revenue. That is, a causal relationship exists between revenue generation and corporate overheads. The

ACCC and AER have previously accepted revenue as an appropriate allocator for shared corporate costs in relation to the Murraylink asset.

It should be noted that in instances where a service can be directly attributed to the asset, such as a legal cost relating solely to the asset, then this is attributed as a direct other cost as outlined in section 2.2.

3.2 *EII's Asset Categories*

EII has the following asset categories (as shown in Appendix B):

- Murraylink;
- Directlink;
- Daandine power station;
- X41 power station;
- Tipton West;
- Kogan North;
- Telfer/Nifty Gas Pipeline;
- Bonaparte Gas Pipeline; and
- Wickham Point Pipeline;

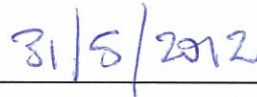
A Directors' Statement

Directors' Statement Regarding Cost Allocation Methodology

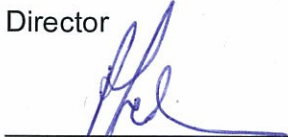
In the opinion of the Directors of the partners of Murraylink Transmission Partnership the information contained in the Murraylink cost allocation methodology is accurate and the Directors of Murraylink Transmission Partnership confirm Murraylink's intention to comply with the cost allocation methodology as approved by the AER.



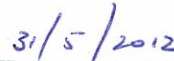
R. S. Pearce
Director



Dated



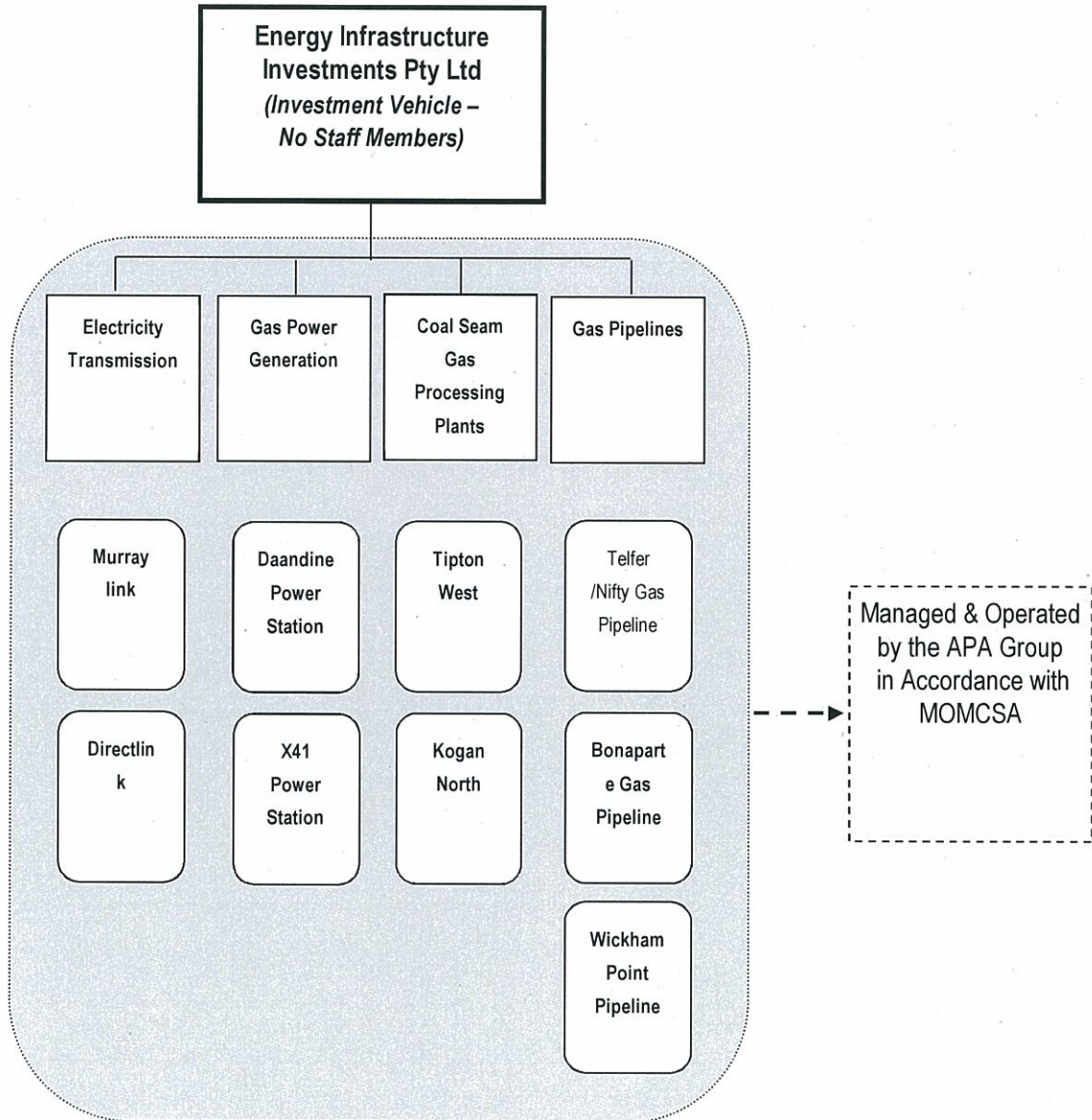
P. J. Fredricson
Director



Dated

B EII Assets and Asset Categories

The EII structure below is broadly indicative of how EII assets are categorised and managed. It does not represent the actual detailed corporate structure of EII.



C Cost Allocation Summary Tables

Where a cost cannot be directly attributed to an asset, it is allocated based on a revenue driver. The revenue driver is based on the overall revenue contribution of the asset as a percentage of EII's total revenue.

Table 1 Allocation of Shared Costs to Murraylink

Cost Category	Description	Costs Shared Between	Basis of Allocation (Driver)
Finance	Costs include: <ul style="list-style-type: none"> • Business advisory services • Treasury functions • Accounting services • Taxation 	Each of EII's assets	Proportional to the contribution to group revenue
Operations Management	Costs of the office of high level management of operations	Each of EII's assets	Proportional to the contribution to group revenue
Commercial Management	Costs of commercial functions	Each of EII's assets	Proportional to the contribution to group revenue
Engineering Management	Costs include: <ul style="list-style-type: none"> • Engineering advisory services • Operational Planning 	Each of EII's assets	Proportional to the contribution to group revenue
Strategic Planning	Costs include: <ul style="list-style-type: none"> • Business advisory services • Business Planning/Business Strategy 	Each of EII's assets	Proportional to the contribution to group revenue
Legal and Regulatory	Costs include: <ul style="list-style-type: none"> • Legal advice and compliance • Regulatory services 	Each of EII's assets	Proportional to the contribution to group revenue
Company Secretariat	Costs include: <ul style="list-style-type: none"> • Secretariat • Corporate governance 	Each of EII's assets	Proportional to the contribution to group revenue