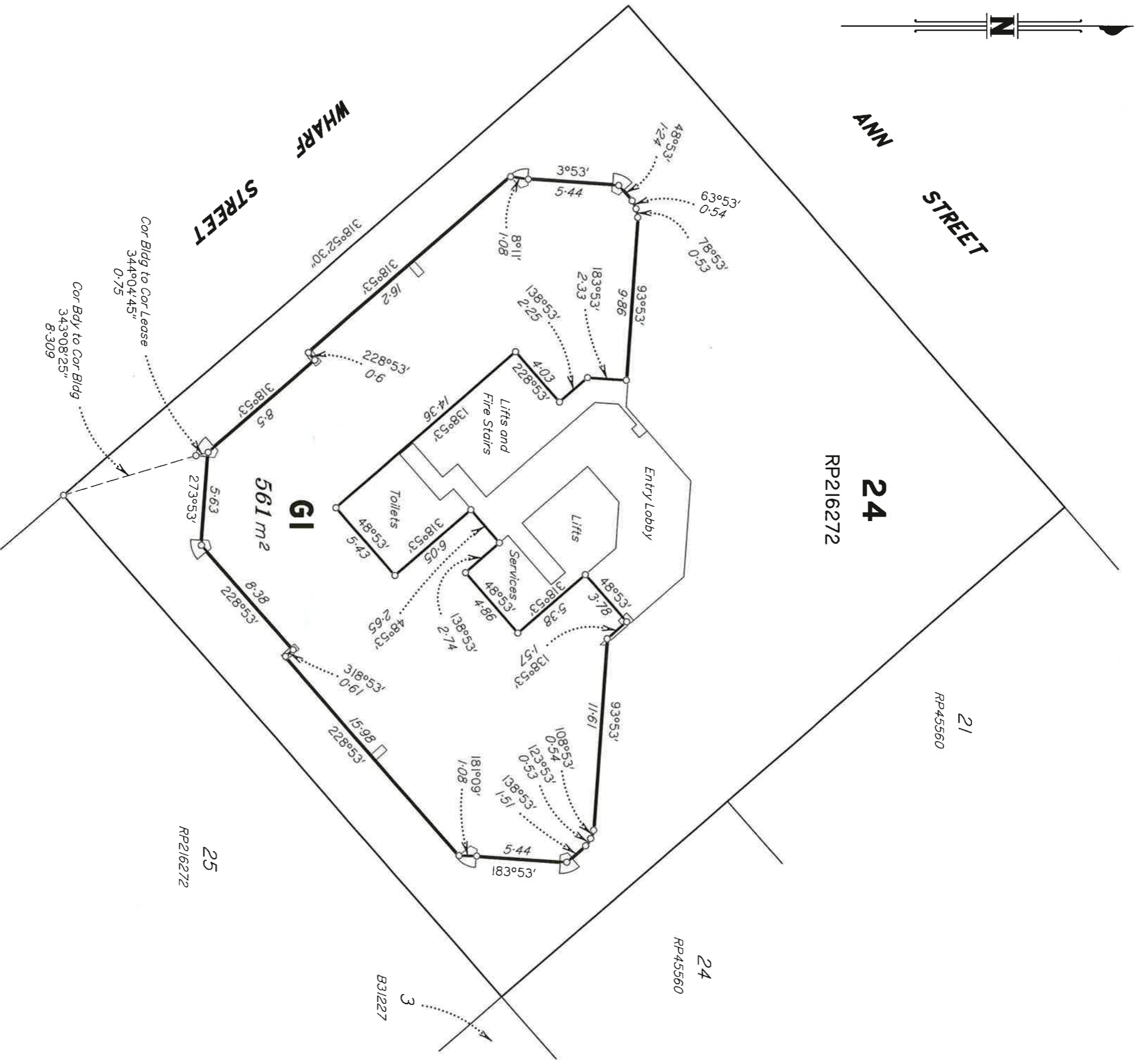


NOTE: Lease Areas have been calculated using the Net Lettable Area (Office Building) as defined by the Property Council of Australia - March 1997.



NOTE: The scale bar above determines the size of the original plan. (A3)

LandPartners Limited, ADM 118-008 008  
Cadastral Surveyor certifies that the details shown on this sketch plan are correct.

21/7/08  
Date  
Director  
Director  
Director

PASSED & ENDORSED

BY: LANDPARTNERS LIMITED ACN 118 146 008

SIGNED: [Signature]  
DESIGNATION: Liaison Officer  
DATE: 21.7.08

**SKETCH PLAN OF LEASE G1**  
Being part of the Ground Floor  
of a building situated on  
Lot 24 on RP216272

STREET ADDRESS: 369 Ann Street, Brisbane  
PARISH: NORTH BRISBANE COUNTY: Stanley



**LANDPARTNERS**  
built environment consultants

Level 3  
99 Melbourne Street  
South Brisbane  
Queensland 4101  
PO Box 3916  
South Brisbane BC  
Queensland 4101  
P: (07) 3842 1000  
F: (07) 3842 1001  
E: info@landpartners.com.au  
W: www.landpartners.com.au



Title: 18083196  
Drawn: GCR 11/07/2008  
File/Plan: 505000A1 BR005050.000-001B

Checked: ADR 15/07/2008

Scale: SEE BAR SCALE

**LE2654**