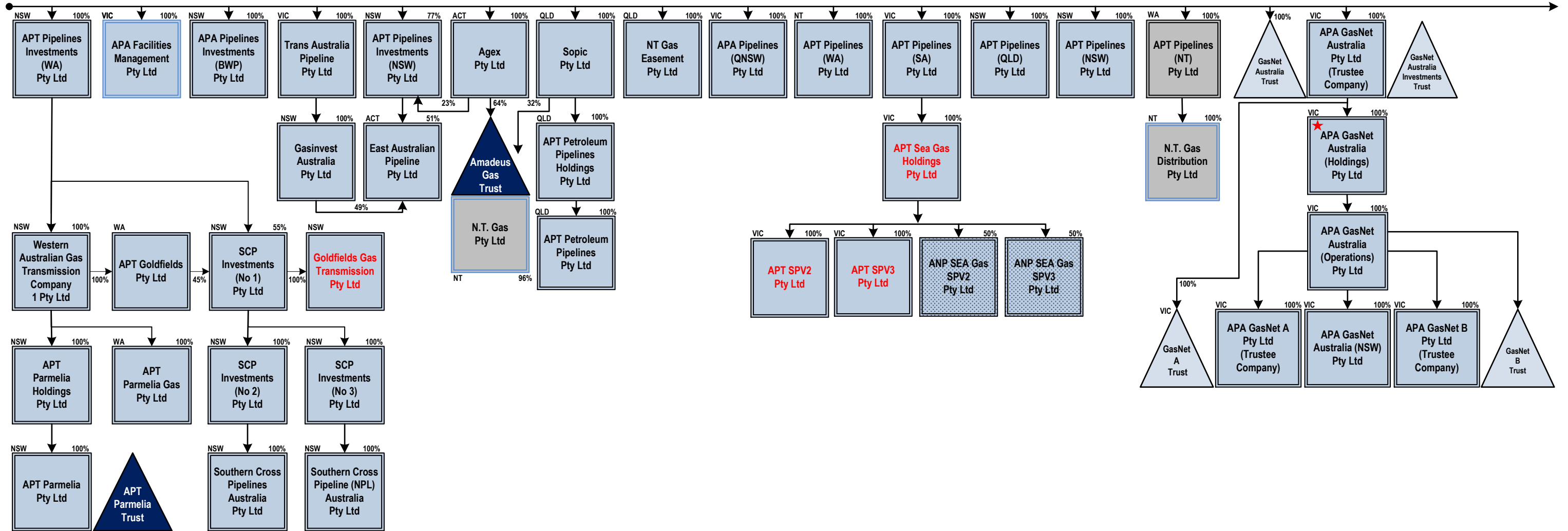
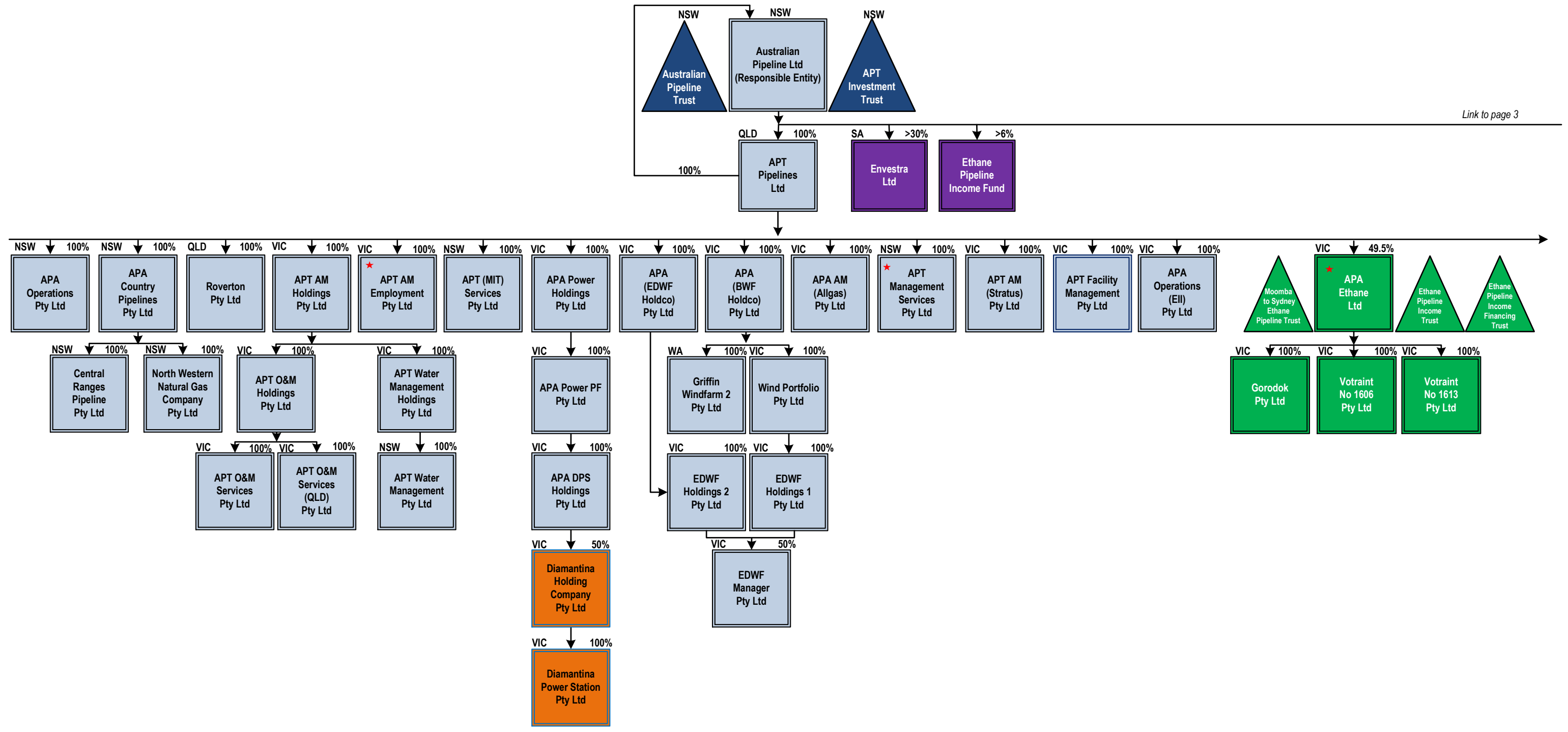


# APA Group Organisational Chart

## 1 June 2014



- ★ Employing entities
  - Diamantina Power Station
  - Energy Infrastructure Investments Pty Ltd (EII)
  - GDI (EII) Investments
  - APA Group and subsidiaries
  - Ethane Pipeline Income Fund and subsidiaries
  - Energy Infrastructure Investments 2 (EII2)
  - Non standard APA subsidiary Directors
  - APA Investment
  - △ Trusts
  - Partial Ownership
  - Partnerships / JV
- Red text - Wholly owned entities which do not guarantee APA Group's finance facilities



Owned by Australian Pipeline Ltd  
 Link to page 2

