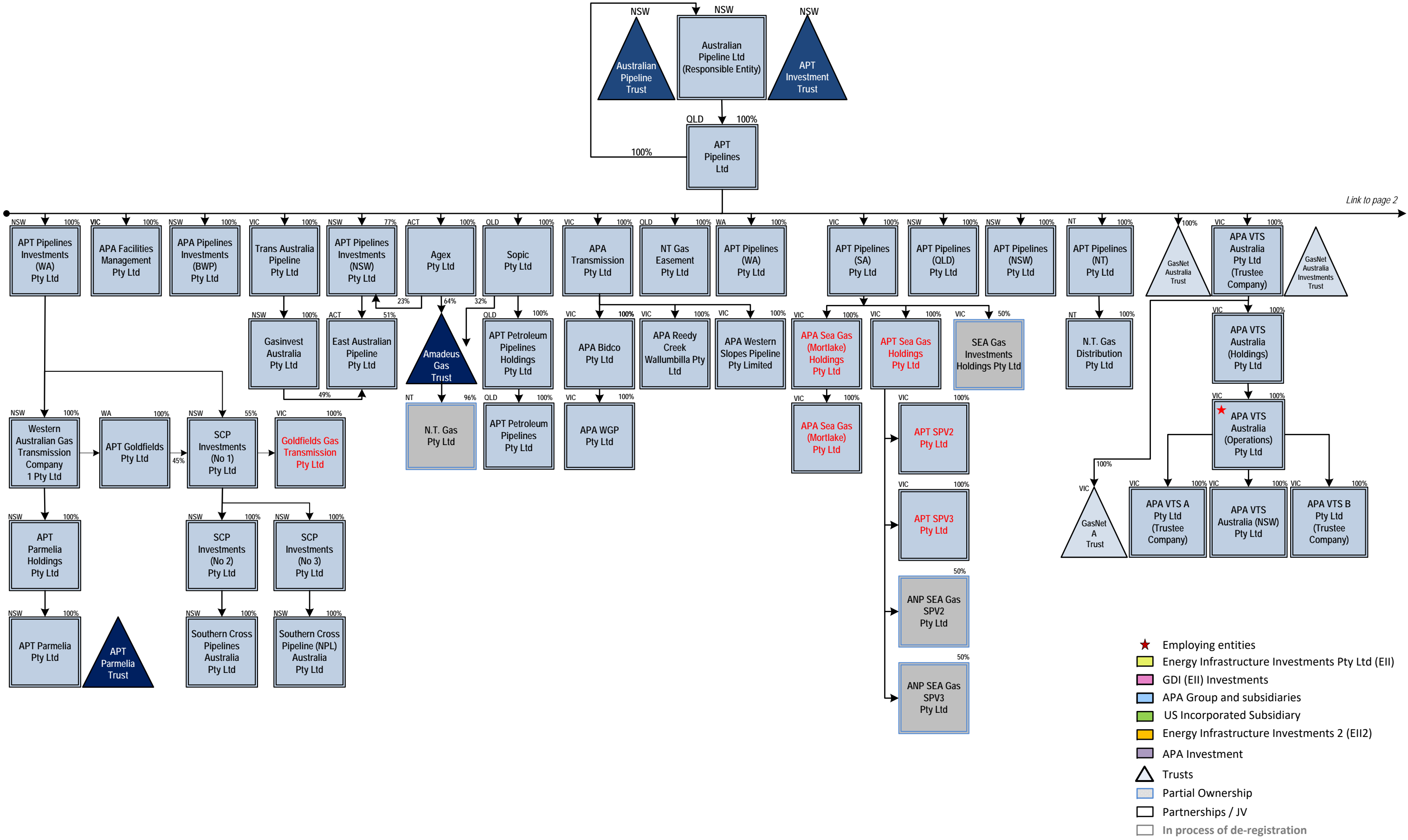


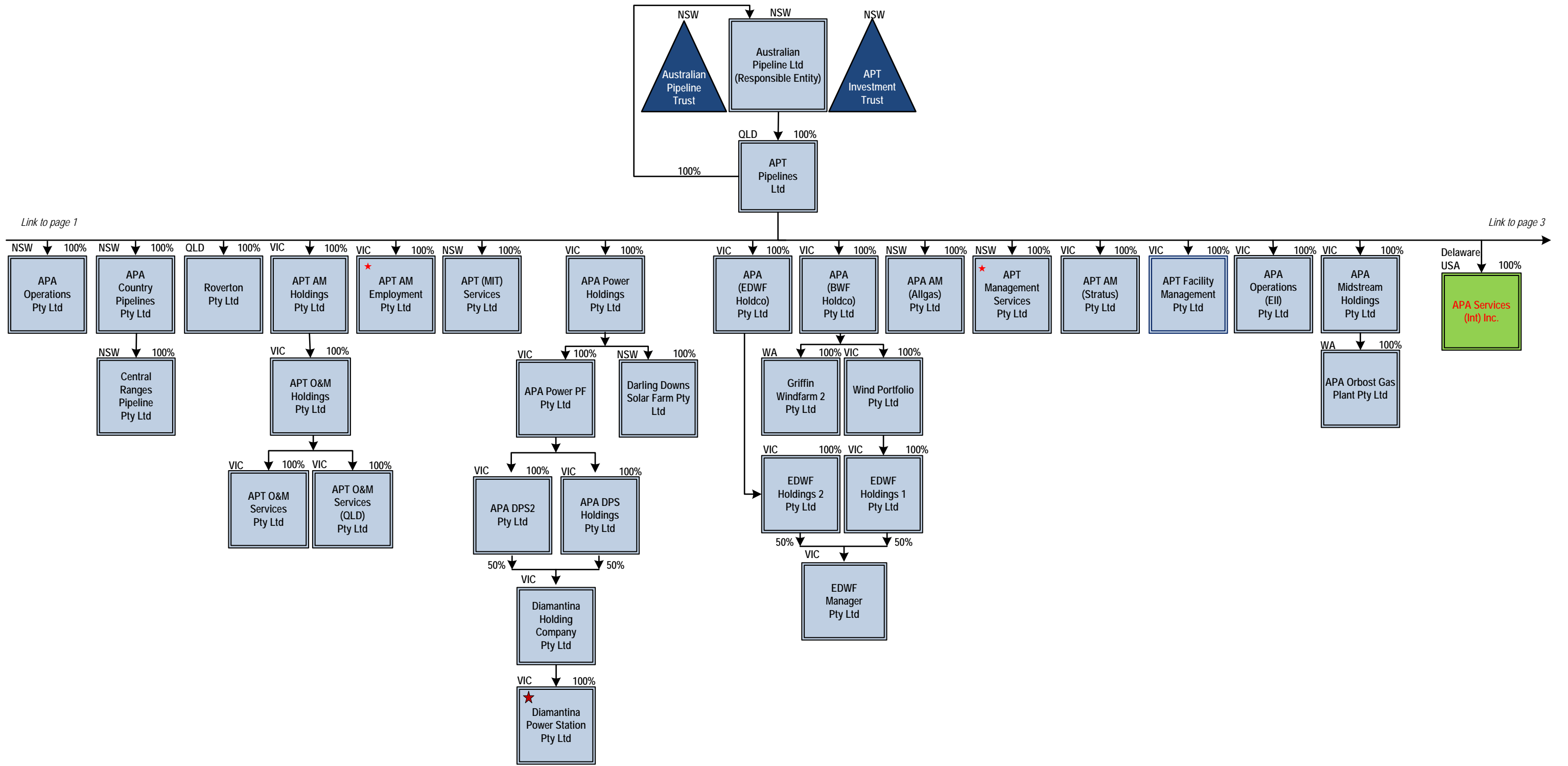
# APA Group Organisational Chart

## 14 May 2020



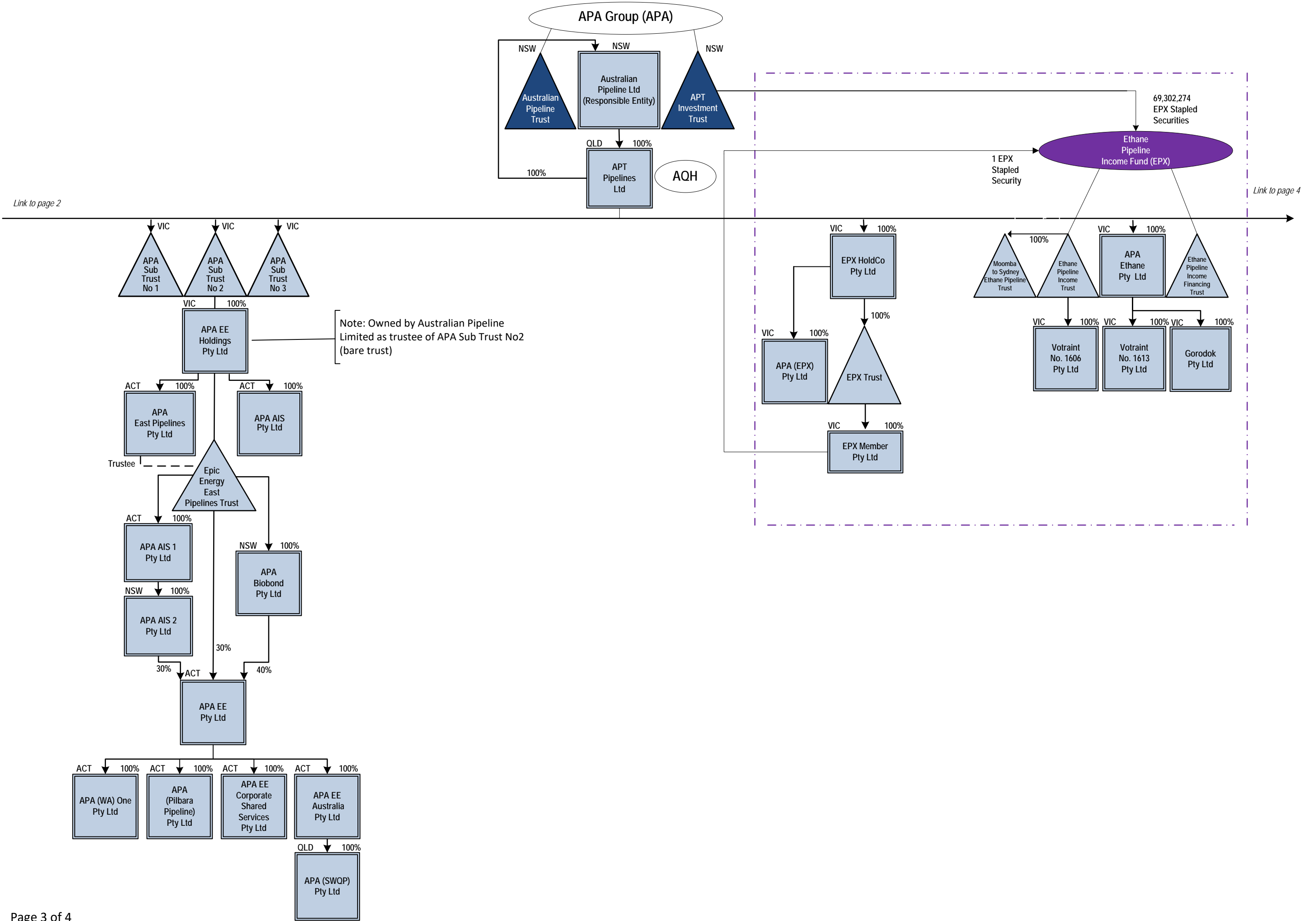
[Link to page 2](#)

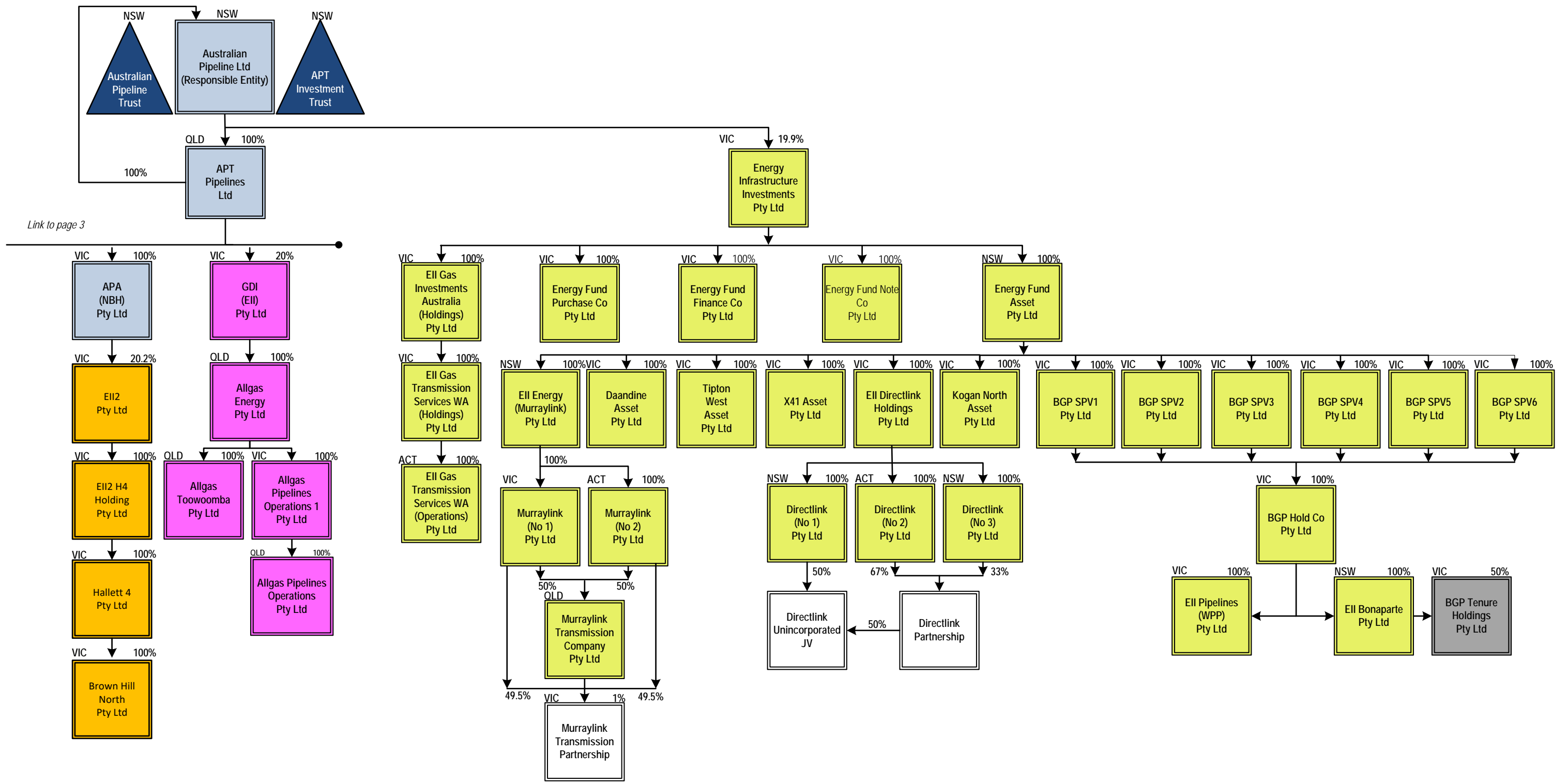
- ★ Employing entities
  - Energy Infrastructure Investments Pty Ltd (EII)
  - GDI (EII) Investments
  - APA Group and subsidiaries
  - US Incorporated Subsidiary
  - Energy Infrastructure Investments 2 (EII2)
  - APA Investment
  - △ Trusts
  - Partial Ownership
  - Partnerships / JV
  - In process of de-registration
- Red text - Wholly owned entities which do not guarantee APA Group's finance facilities



[Link to page 1](#)

[Link to page 3](#)





Link to page 3