

27 September – 3 October 2015

Weekly summary

Average prices decreased in all markets this week, with more notable declines in Victoria and Brisbane. In Victoria, demand and prices were low on the high temperature days at the end of the week. Beginning of day prices on Friday 2 October and Saturday 3 October were already low at \$2.20/GJ or less, and reduced further in the 10 am schedules to just over \$0.30/GJ due to over forecast demand (see figure 1.1). In Brisbane, the prices on these days also reduced significantly, falling to \$2.20/GJ (see figure 4.1).

There were a record 133 trades over September in the Wallumbilla gas supply hub, for a record quantity exceeding 1.2 PJ.¹ There was also a new record set for a daily traded volume of 141 TJ, which occurred on Friday 2 October.² The continued increase in production at Roma has led to average daily output exceeding 1.8 PJ/day for the month of September.

Long term statistics and explanatory material

The AER has published an [explanatory note](#) to assist with interpreting the data presented in its weekly gas market reports. The AER also publish a range of [longer term statistics](#) on the performance of the gas sector including gas prices, production, pipeline flows and consumer demand.

Market overview

Figure 1 sets out the average daily prices (\$/GJ) in the Victorian Declared Wholesale Market (**VGM or Victorian gas market**) and for the Sydney (**SYD**), Adelaide (**ADL**) and Brisbane (**BRI**) Short Term Trading Market hubs (**STTM**) for the current week compared to historical averages.

Figure 1: Average daily prices – all markets (\$/GJ)³

Region	Victoria	Sydney	Adelaide	Brisbane
27 Sep - 03 Oct 2015	3.62	5.00	4.62	3.58
% change from previous week	-25	-9	-7	-22
15-16 financial YTD	4.62	5.05	5.63	4.18
% change from previous financial YTD	27	32	47	83

¹ Previous record quantities prior to June 2015 have been below 445 TJ, while recent months have seen a marked increase in volume traded (89 trades for 588 TJ over June, 127 trades for 746 TJ in July, 108 trades for 718 TJ in August).

² Two trades on the SWQP accounted for only 20 TJ of the gas traded on 2 October. The majority of the traded quantity was attributed to the seven trades on the RBP for 121 TJ of gas, for utilisation on gas days from 3 to 6 October.

³ The weighted average daily imbalance price applies for Victoria.

Figure 2 compares average weekly gas prices, ancillary market payments and scheduled injections against historical averages for the Victorian gas market.

Figure 2: Victorian Gas Market

	Price (\$/GJ)	Ancillary payments (\$000)*	BOD forecast demand quantity (TJ)
27 Sep - 03 Oct 2015	3.62	-	520
% change from previous week	-25	-	-28
15-16 financial YTD	4.62	-	869
% change from previous financial YTD	27	-	10

* Note: only positive ancillary payments, reflecting system constraints will be shown here.

More detailed analysis on the VGM is provided in section 1.

Figures 3 to 5 show average ex ante and ex post gas prices, Market Operator Service (MOS) balancing gas service payments together with the related daily demand quantities against historical averages for the Sydney, Adelaide and Brisbane STTM hubs, respectively.

Figure 3: Sydney STTM

	Ex ante price (\$/GJ)	Ex post price (\$/GJ)	MOS payments (\$000)	Ex ante quantity (TJ)	Ex post quantity (TJ)
27 Sep - 03 Oct 2015	5.00	4.55	10.47	238	232
% change from previous week	-9	-19	-49	-5	-7
15-16 financial YTD	5.05	4.85	25.81	272	268
% change from previous financial YTD	32	25	39	-3	-6

Figure 4: Adelaide STTM

	Ex ante price (\$/GJ)	Ex post price (\$/GJ)	MOS payments (\$000)	Ex ante quantity (TJ)	Ex post quantity (TJ)
27 Sep - 03 Oct 2015	4.62	4.32	6.36	61	57
% change from previous week	-7	-10	-55	-17	-16
15-16 financial YTD	5.63	5.64	13.18	83	82
% change from previous financial YTD	47	50	-12	0	-1

Figure 5: Brisbane STTM

	Ex ante price (\$/GJ)	Ex post price (\$/GJ)	MOS payments (\$000)	Ex ante quantity (TJ)	Ex post quantity (TJ)
27 Sep - 03 Oct 2015	3.58	3.49	1.07	92	91
% change from previous week	-22	-26	-53	1	0
15-16 financial YTD	4.18	4.10	1.40	95	94
% change from previous financial YTD	83	82	24	-41	-41

More detailed analysis of the STTM hubs is found in sections 2 to 4.

Section 5 provides analysis on production and pipeline flows on the National Gas Bulletin Board (**Bulletin Board**), as well as gas powered generation (**GPG**) volumes in each state, and section 6 provides information on the Gas Supply Hub (**GSH**) at Wallumbilla.

27 September – 3 October 2015

1. Victorian Declared Wholesale Market

In the Victorian gas market, gas is priced five times daily at 6 am, 10 am, 2 pm, 6 pm and 10 pm. The imbalance weighted price on a gas day tends towards the 6 am price⁴ which is the schedule at which most gas is traded.

The main drivers⁵ of price are demand forecasts and bids to inject or withdraw gas from the market. Figures 1.1 to 1.4 below show the daily prices, demand forecasts⁶, and injection/withdrawal bids for each of the five pricing schedules. Figure 1.5 provides information on which system injection points were used to deliver gas, in turn indicating the location and relative quantity of gas injection bids cleared through the market.

Figure 1.1: Prices by schedule

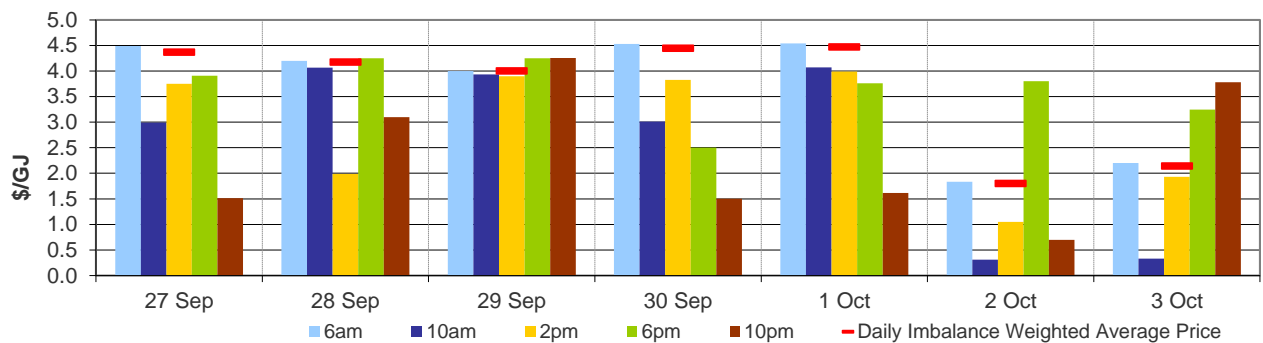
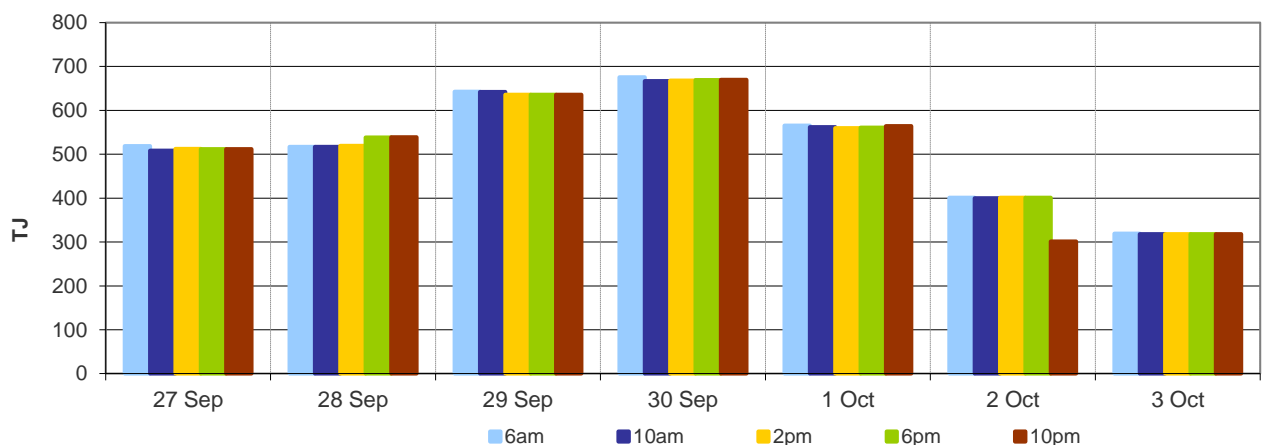


Figure 1.2: Demand forecasts



⁴ Prices for subsequent schedules are applied only to the differences in scheduled quantities (imbalances) to calculate the weighted price. The 6 am price applies to the entire scheduled quantity in the initial schedule.

⁵ The price might also be affected by transmission or production (contractual) constraints limiting how much gas can be delivered from a locale or System Injection Point (SIP) from time to time.

⁶ These are Market Participants' aggregate demand forecasts adjusted for any override as applied by AEMO from time to time. These forecasts must be scheduled and cannot respond to price like withdrawal bids.

Figure 1.3: Injection bids by price bands

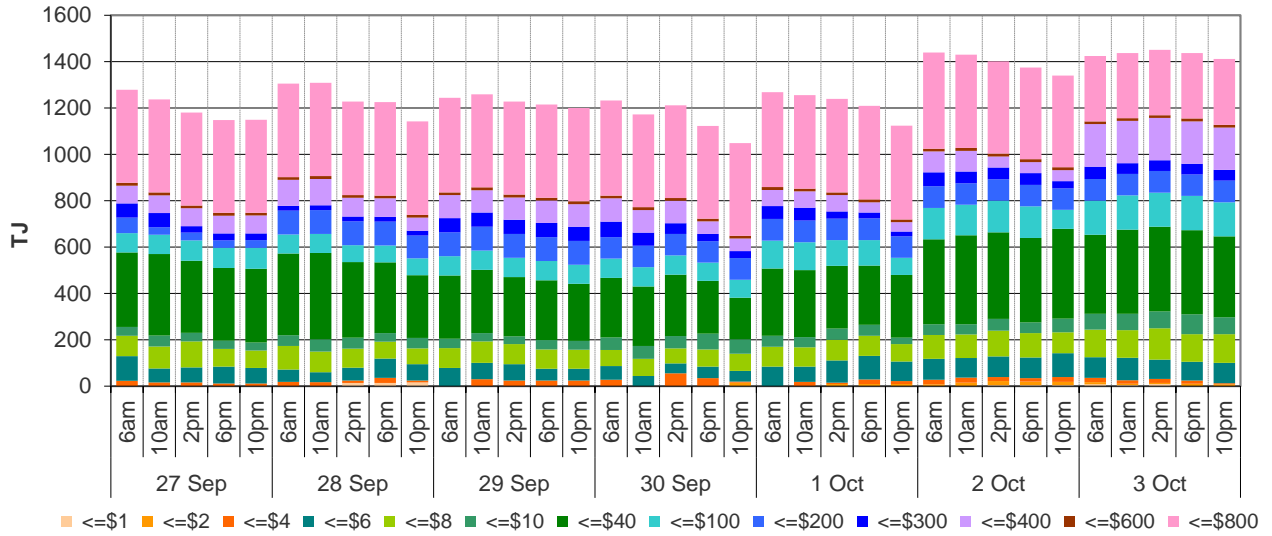


Figure 1.4: Withdrawal bids by price bands

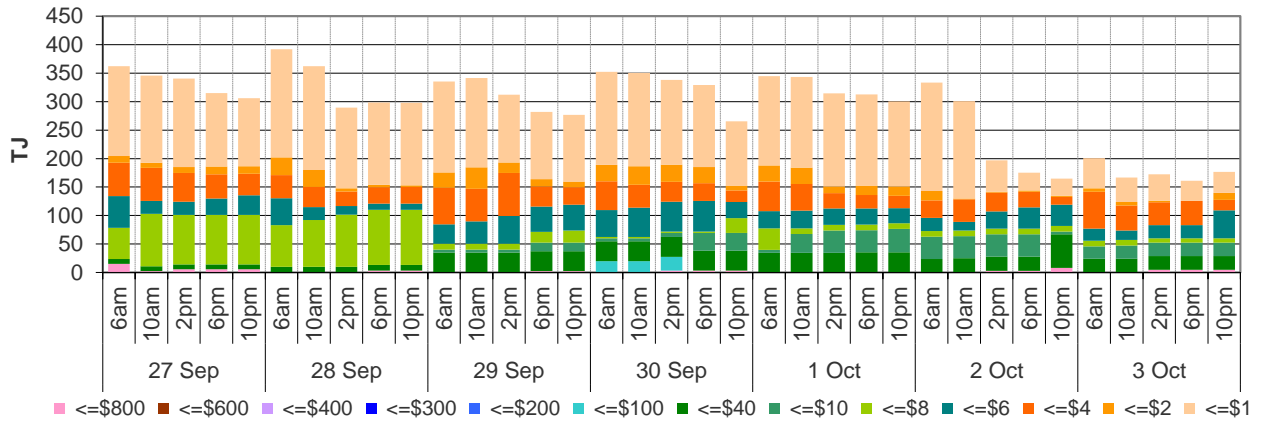
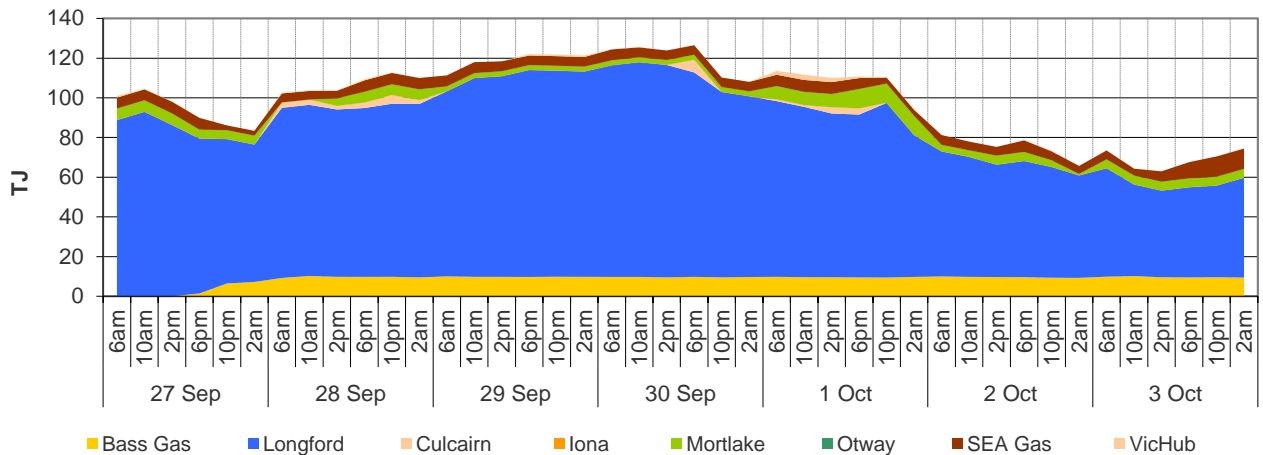


Figure 1.5: Metered Injections by System Injection Point



Note that in figure 1.5, the last 8-hour schedule from 10 pm has been separated into two 4-hour blocks to provide a consistent comparison with earlier scheduled injection volumes.

2. Sydney STTM

In each STTM hub, a daily gas price is calculated before the gas day (the ex ante price) and after the gas day (the ex post price). The main drivers of these prices are participant demand forecasts, and offers to inject or bids to withdraw gas traded at the hub.⁷ Divergences in ex ante and ex post prices for a gas day may occur due to differences in scheduled (forecast) and allocated (actual) quantities. Pipeline acronyms are defined in the [user guide](#).

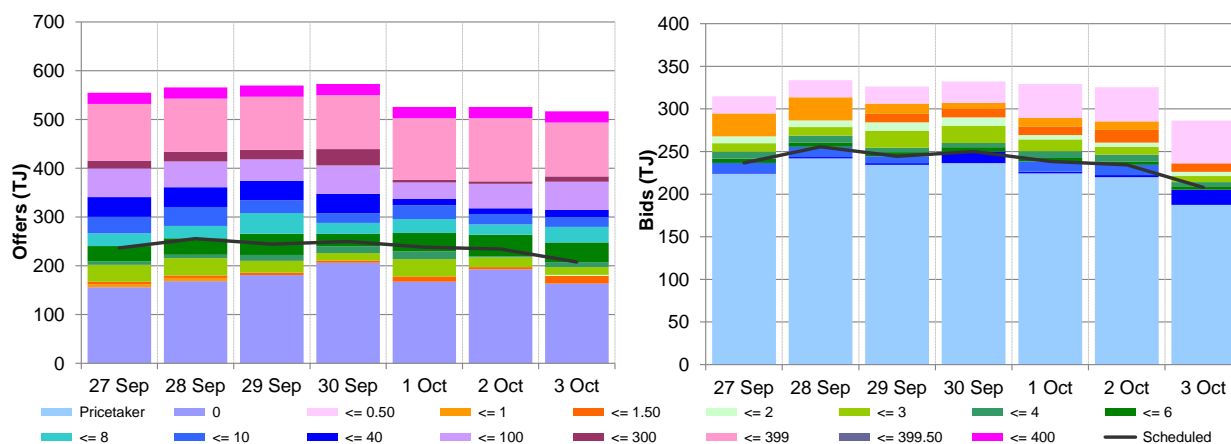
Market Operator Service balancing gas (MOS) payments arise because the amount of gas nominated on pipelines for delivery on a gas day will either exceed or fall short, by some amount, of the amount of gas consumed in the hub. In such circumstances, MOS payments are made to participants for providing a service to park gas on a pipeline or to loan gas from a pipeline to the hub.⁸

Figures 2.1 and 2.2 show daily prices, demand, offers and bids. Figures 2.3 and 2.4 show gas scheduled and allocated on pipelines to supply the hub, indicating the location and relative quantity of gas offers across pipelines and also the amount of MOS allocated for each pipeline.

Figure 2.1: SYD STTM daily ex ante and ex post prices and quantities

	Sun	Mon	Tue	Wed	Thu	Fri	Sat
Ex ante price (\$/GJ)	5.85	5.85	4.96	4.91	4.49	4.89	4.06
Ex ante quantity (TJ)	237	256	244	250	238	234	208
Ex post price (\$/GJ)	5.84	5.85	4.29	4.07	4.06	4.49	3.23
Ex post quantity (TJ)	233	252	236	239	235	230	197

Figure 2.2: SYD daily hub offers and daily hub bids in price bands (\$/GJ)



⁷ The main driver of the amount of gas scheduled on a gas day is the 'price-taker' bid, which is forecast hub demand that cannot respond to price and which must be delivered, regardless of the price.

⁸ MOS service payments involve a payment for a MOS increase service when the actual quantity delivered exceeds final gas nominations for delivery to a hub, and a payment for a MOS decrease service when the actual quantity delivered is less than final nominations. As well as a MOS 'service' payment, as shown in figure 2.4, MOS providers are paid for or pay for the quantity of MOS sold into the market or bought from the market (MOS 'commodity' payments/charges).

Figure 2.3: SYD net scheduled and allocated gas hub supply (excluding MOS)

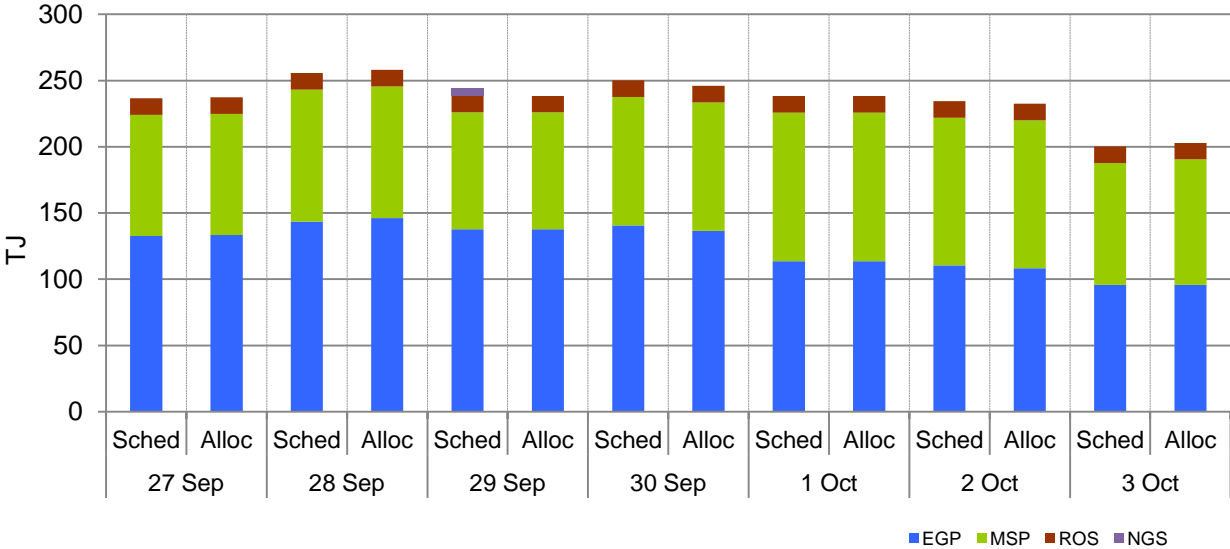
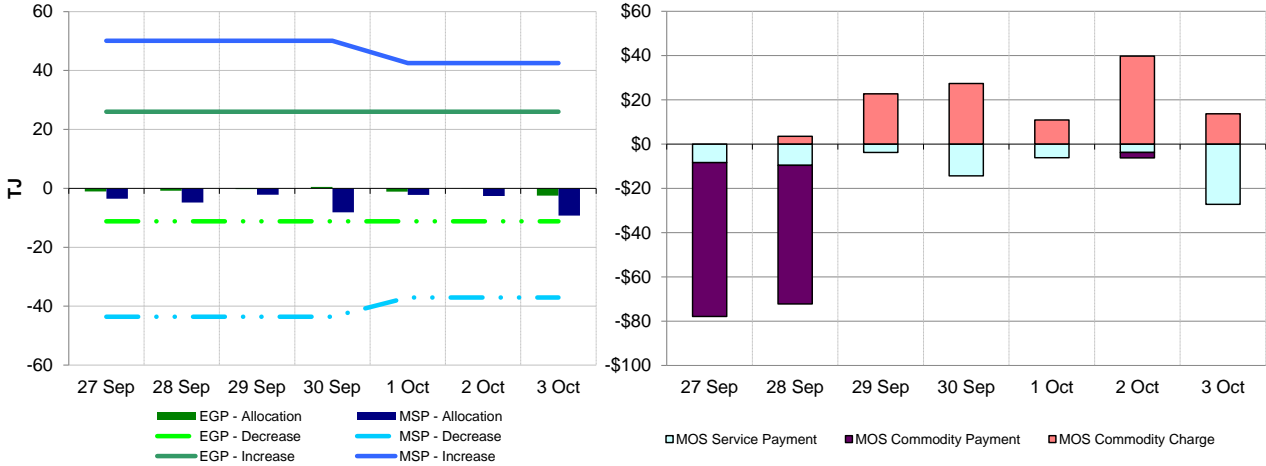


Figure 2.4: SYD MOS allocations (TJ), service payments and commodity payments/charges (\$000)



3. Adelaide STTM

The Adelaide STTM hub functions in the same way as the Sydney STTM hub. The same data that was presented for the Sydney hub is presented for the Adelaide hub in the figures below.

Figure 3.1: ADL STTM daily ex ante and ex post prices and quantities

	Sun	Mon	Tue	Wed	Thu	Fri	Sat
Ex ante price (\$/GJ)	5.35	4.85	4.52	4.69	5.34	4.25	3.31
Ex ante quantity (TJ)	50	68	71	70	62	56	46
Ex post price (\$/GJ)	5.35	4.34	4.26	4.31	4.85	4.01	3.12
Ex post quantity (TJ)	49	64	70	65	62	51	39

Figure 3.2: ADL daily hub offers and daily hub bids in price bands (\$/GJ)

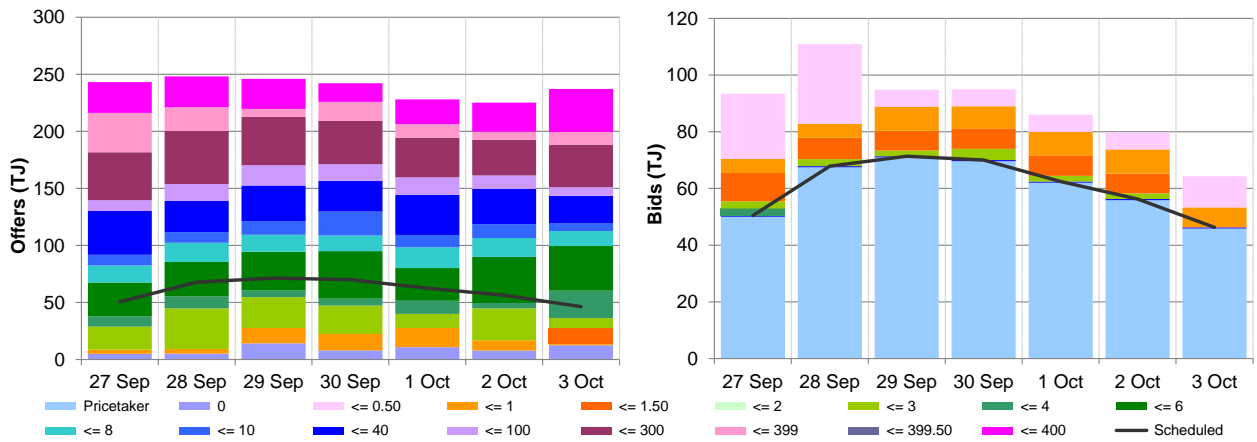


Figure 3.3: ADL net scheduled and allocated gas hub supply (excluding MOS)

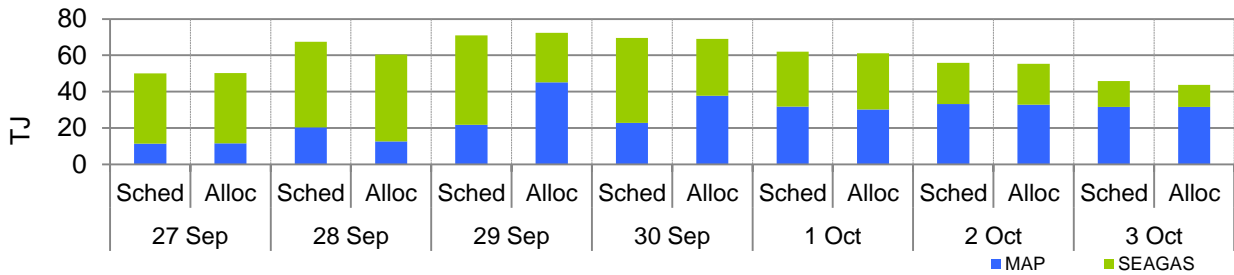
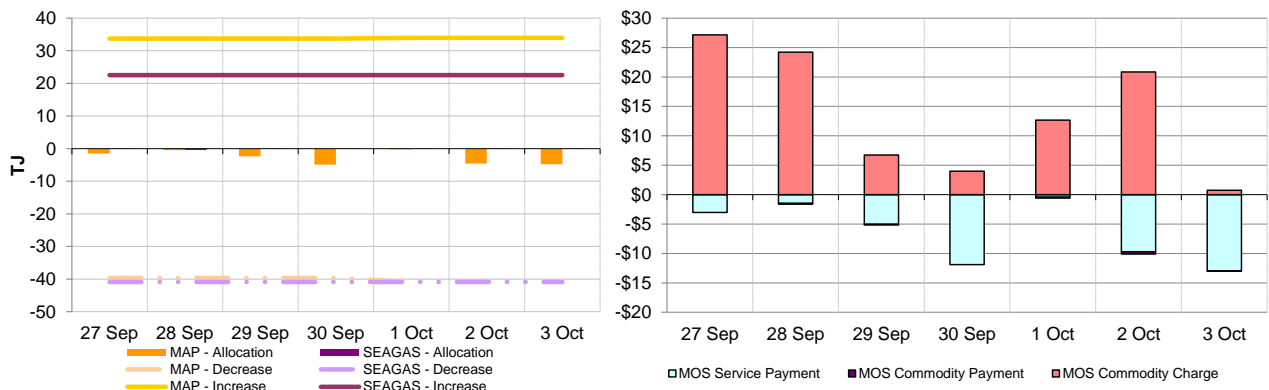


Figure 3.4: ADL MOS allocations (TJ), service payments and commodity payments/charges (\$000)



4. Brisbane STTM

The Brisbane STTM hub functions in the same way as the Sydney STTM hub. The same data that was presented for the Sydney hub is presented for the Brisbane hub in the figures below.

Figure 4.1: BRI STTM daily ex ante and ex post prices and quantities

	Sun	Mon	Tue	Wed	Thu	Fri	Sat
Ex ante price (\$/GJ)	4.77	3.86	4.60	3.60	3.86	2.20	2.20
Ex ante quantity (TJ)	84	99	98	98	95	91	78
Ex post price (\$/GJ)	4.77	3.86	4.30	3.24	3.86	2.20	2.20
Ex post quantity (TJ)	83	98	97	96	95	89	77

Figure 4.2: BRI daily hub offers and daily hub bids in price bands (\$/GJ)

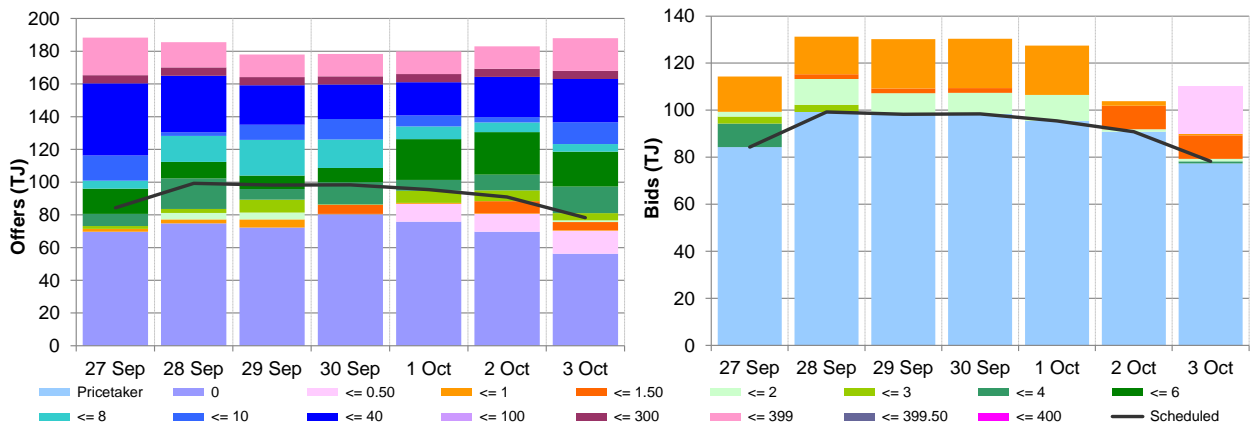


Figure 4.3: BRI net scheduled and allocated gas hub supply (excluding MOS)

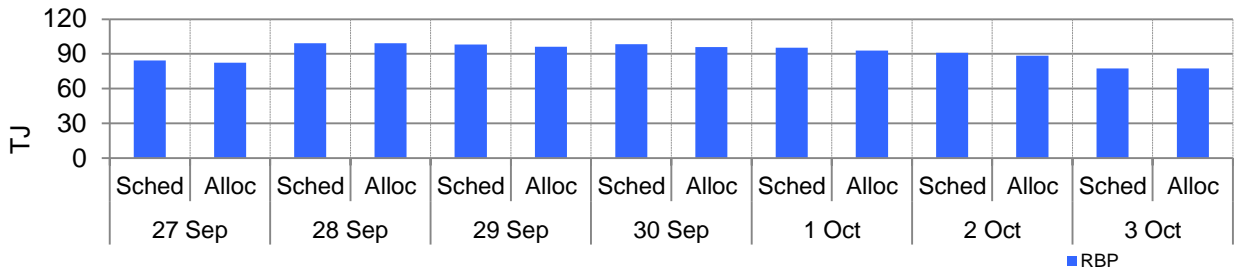
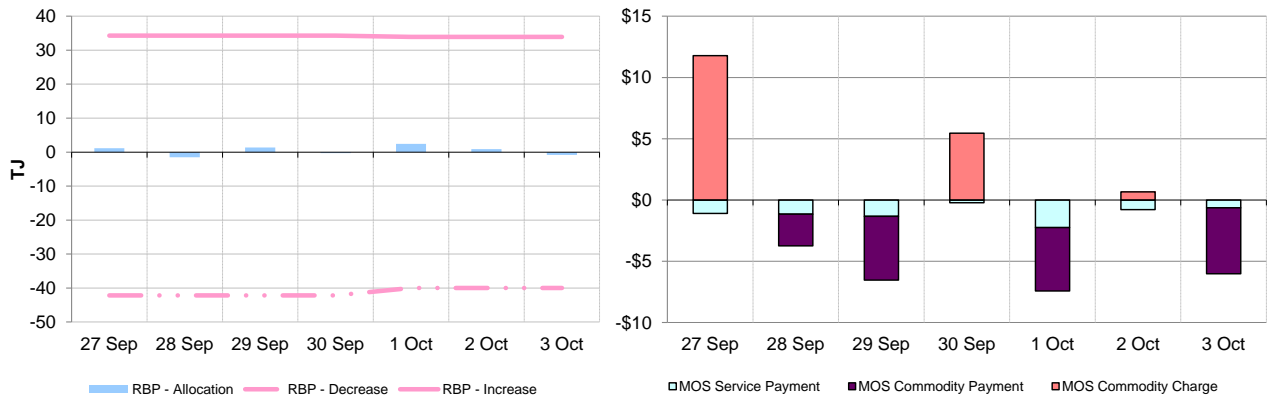


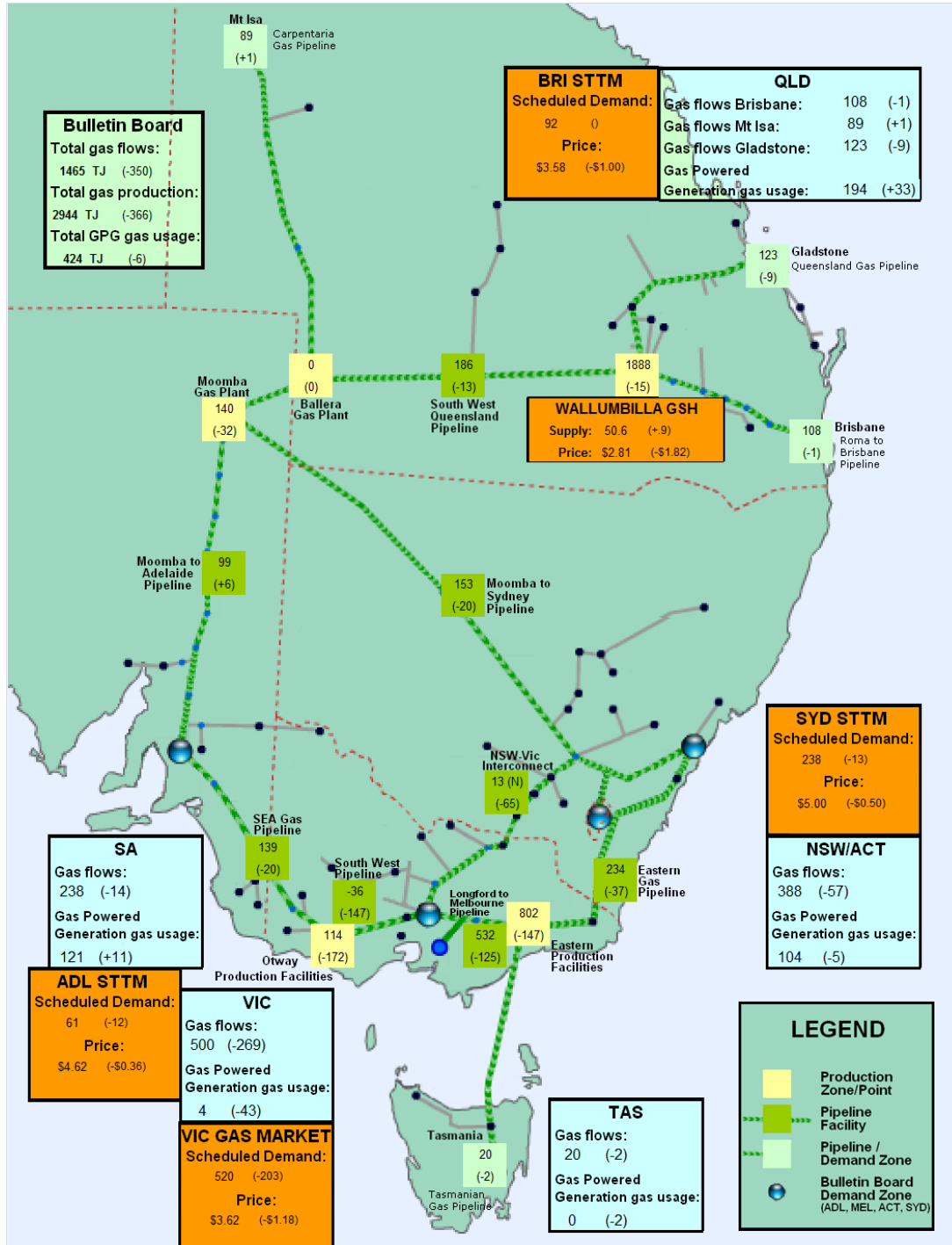
Figure 4.4: BRI MOS allocations (TJ), service payments and commodity payments/charges (\$000)



5. National Gas Bulletin Board

Figure 5.1 shows average daily actual flows for the current week in the aqua boxes⁹ from the Bulletin Board (changes from the previous week's average are shown in brackets). Gas powered generation (GPG) gas usage is also shown in each region in the aqua boxes. The orange boxes provide average daily scheduled volumes and prices¹⁰ for each gas market.

Figure 5.1: Gas market data (\$/GJ, TJ/day); Production, Consumption and Pipeline flows (TJ)



⁹ Regional Gas Flows: **SA** = MAP + SEAGAS, **VIC** = SWP + LMP – negative(NSW-VIC), **NSW/ACT** = EGP + MSP, **TAS** = TGP, **QLD (Brisbane)** = RBP, **QLD (Mt Isa)** = CGP, **QLD (Gladstone)** = QGP
GPG volumes may include gas usage that does not show up on Bulletin Board pipeline flows.
¹⁰ From October 2014, production flows reported for the Roma region include quantities of gas for LNG export trains.
Wallumbilla supply is the average daily volume of gas 'traded', while price is a volume weighted average.

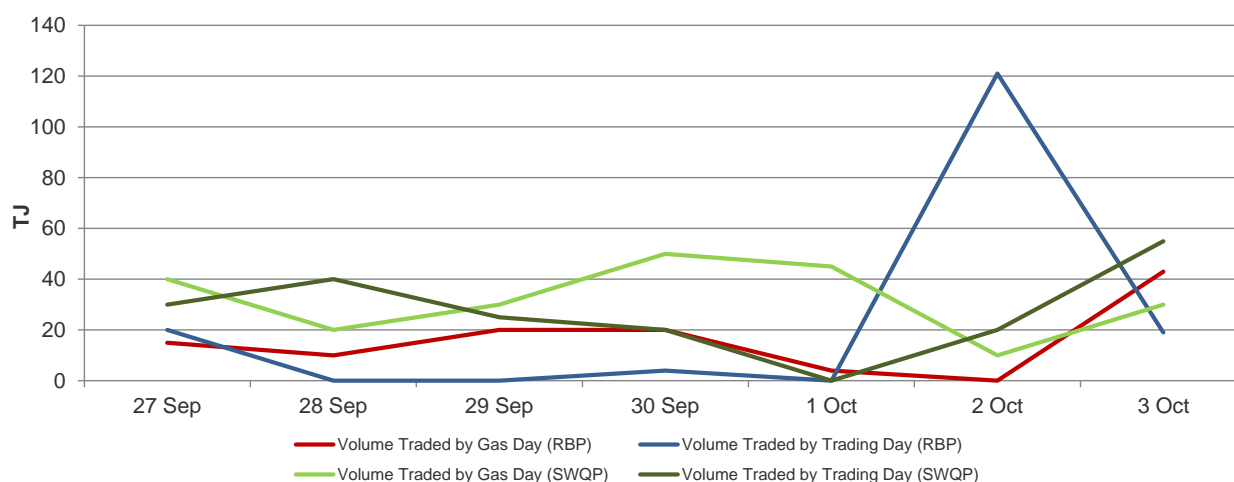
6. Gas Supply Hub

The Gas Supply Hub (**GSH**) was established for the trading of gas at Wallumbilla because it is located in close proximity to significant gas supply sources and demand locations and is a major transit point between Queensland and the gas markets on Australia’s east coast. The GSH is a voluntary market¹¹ for the supply of gas traded between separate participants, with products listed for sale and purchase at delivery points on three major connecting pipelines at Wallumbilla – the Queensland Gas Pipeline (**QGP**), the South West Queensland Pipeline (**SWQP**) and the Roma to Brisbane Pipeline (**RBP**). There are separate products for each pipeline (each pipeline is considered a trading location, and each has a number of delivery points) and delivery period (daily, day-ahead, balance-of-day and weekly).

There were 30 trades this week for 354 TJ of gas at a volume weighted price of \$2.81/GJ. On the SWQP 13 trades for 190 TJ were valued at \$3.21/GJ, while on the RBP 17 trades for 164 TJ were valued at \$2.35/GJ.

Figure 6.1 shows volumes traded¹² on each gas day and trading day for the current week.

Figure 6.1: Volume Traded (by Gas Day and by Trading Day)



¹¹ Market trade is facilitated through an electronic trading platform, with standardised terms and conditions and a market settlement facility for the short-term trading of physical gas and related products. The market is designed to complement existing bilateral gas supply arrangements and gas transportation agreements, through the placement of anonymous offers (to sell) or bids (to buy) at specified quantity and price increments, which are automatically matched on the exchange to form transactions.

¹² Volumes shown for weekly products include the ‘daily’ volume for each relevant ‘gas day’, and the ‘weekly’ volume for each relevant ‘trading day’.