

Spot prices greater than \$5000/MWh



AUSTRALIAN ENERGY
REGULATOR

South Australia: 5 - 17 March 2008

Executive Summary

The Australian Energy Regulator (AER) is required under the National Electricity Rules to investigate and report on any instances in the National Electricity Market (NEM) where the spot price exceeds \$5000/MWh.

From 5 to 17 March 2008, electricity spot market prices in South Australia exceeded \$5000/MWh on 26 occasions. These events caused the average electricity spot market price in March to increase to \$325/MWh, the highest-ever monthly price since the market started in 1998.

This report suggests that there were a number of contributing factors to the high priced events in South Australia. At the time, South Australia was in the midst of an extended heatwave which created unprecedented levels of electricity demand. Electricity demand peaked at 3077 MW on 17 March, the highest demand ever recorded in South Australia.

However, the report finds that bidding behaviour by AGL significantly contributed to the high priced events. On 5, 6, 7, 12 and 13 March, AGL was the only participant who offered significant amounts of capacity at over \$5000/MWh. In fact, around 80 per cent of capacity at AGL's Torrens Island power station was priced above \$5000/MWh.

The report also finds that network availability, in particular the import limit into South Australia from Victoria, contributed to the high priced events. The AER is continuing to investigate this issue.

Introduction

The AER is responsible for the economic regulation of the wholesale electricity market and electricity transmission networks in the NEM. It is also responsible for monitoring compliance with and enforcing the National Electricity Law, the National Electricity Rules and the National Electricity Regulations.

As part of this role, the AER investigates and reports on any instances in the NEM where the half hour spot price exceeds \$5000/MWh. Under the Rules, the AER must:

- describe significant factors contributing to the spot price exceeding \$5000/MWh, including withdrawal of generation capacity and network availability;
- assess whether rebidding pursuant to clause 3.8.22 contributed to the spot price exceeding \$5000/MWh;
- identify the marginal scheduled generating units; and
- identify all units with offers for the trading interval equal to or greater than \$5000/MWh and compare these dispatch offers to relevant dispatch offers in previous trading intervals.

This report presents the AER's findings from investigations into high priced events in South Australia in March 2008.

From 3 to 17 March 2008, Adelaide experienced 15 consecutive days of temperatures exceeding 35 degrees, the longest ever heatwave for any Australian capital city. This extended heatwave caused electricity demand levels never before seen in South Australia. Electricity demand peaked at 3077 MW on 17 March, eclipsing the previous record of 2860 MW on 16 February 2007.

During this time, electricity spot market prices in South Australia exceeded \$5000/MWh on 26 occasions. These events caused the average electricity spot market price in March to increase to \$325/MWh, the highest-ever monthly price since the market started in 1998. The average for the first quarter of the year was \$243/MWh, which is also the highest-ever quarterly average price. A full listing of the price and demand outcomes during these 26 trading intervals is attached at **Appendix A**.

The AER has analysed the factors that contributed to these high priced events. Apart from the high demand, the report has found a number of contributing factors to the high priced events in March. These factors are analysed in this report.

This report finds that bidding behaviour by AGL at both its Torrens Island power station and the Angaston power station (owned by Infratil but controlled by AGL) significantly contributed to the high priced events. On 5, 6, 7, 12 and 13 March, AGL was the only participant that offered significant amounts of capacity at over \$5000/MWh. In fact, around 80 per cent of capacity at AGL's Torrens Island power station was priced above \$5000/MWh. A full analysis of the generation capacity offered in South Australia and the closing price bids is contained in **Appendices B** and **C** respectively.

The AER analysis shows that, as a result of this behaviour, as the marginal scheduled generator, AGL was effectively in a position to set the spot price for the majority of the high priced events. A full analysis of the generators involved in setting price for all 26 high priced periods is attached at **Appendix D**.

Consistent with other recent AER reports, this report also finds that network availability, in particular the import limit into South Australia from Victoria, contributed to the high priced events. As foreshadowed in earlier reports, the AER is investigating this issue.

In addition, this report provides an analysis of other factors that contributed to the high priced events and generator bidding behaviour. This includes an examination of the cumulative price threshold and administered pricing arrangements. An analysis of how the administered price cap affected the market is included at **Appendix E**.

Factors contributing to high prices

Generator offers and rebidding

During the times of high prices a significant amount of capacity was priced above \$5000/MWh at AGL's Torrens Island power station¹. On each day, capacity was largely presented in two price tiers to the market. Capacity up to the nominal minimum operating levels of those units was priced at the price floor of -\$1000/MWh, with the remaining capacity priced at close to the price cap of \$10 000/MWh. AGL's generation offers and rebids made on each of the high priced days are discussed below along with significant rebids by other participants:

- On 5 March, one A unit and four B units at Torrens Island were online—a total of 910 MW—with 190 MW offered at the price floor and 720 MW offered at the price

¹ Torrens Island power station consists of four 120 MW units in A station and four 200 MW units in B station.

cap. The remaining three A units (a total of 360 MW) were not offered into the market during the high price periods.

At 12.20 pm, Synergen Power rebid all of the capacity of the Port Lincoln generator (38 MW) from prices above \$1000/MWh to the price floor. Further rebids from 1.58 pm reduced the availability to 18 MW. From 2.41 pm, Synergen Power rebid the generator inflexible at 7 MW. The reasons given for each rebid was “Binding constraint”. Rebids from 3.51 pm saw the availability of the generator increased to 43 MW with all of this capacity priced at the price floor.

- On 6 March, two A units and four B units at Torrens Island were online (a total of 1030 MW) with 220 MW offered at the price floor and 810 MW priced at around the price cap.
- On 7 March, two A units and four B units at Torrens Island were online (a total of 1030 MW), with 220 MW offered at the price floor and 810 MW priced above \$5000/MWh.
- On 12 March, three A units and three B units at Torrens Island were online (a total of 950 MW) with 210 MW offered at the price floor and 740 MW priced at around the price cap. Initially there were four B units and four A units offered but at around 6 pm on 11 March, unit B3 (200 MW) tripped. A rebid at 8.31 pm on 11 March saw the return of this unit delayed, with the unit eventually returning to service on 13 March at 7.30 am. At 9.22 am on 12 March unit A4 tripped from 100 MW. This led to a rebid that reduced the availability by 120 MW to zero for the remainder of the day. The reason given was “Plant failure::Capacity change due to plant problems”.

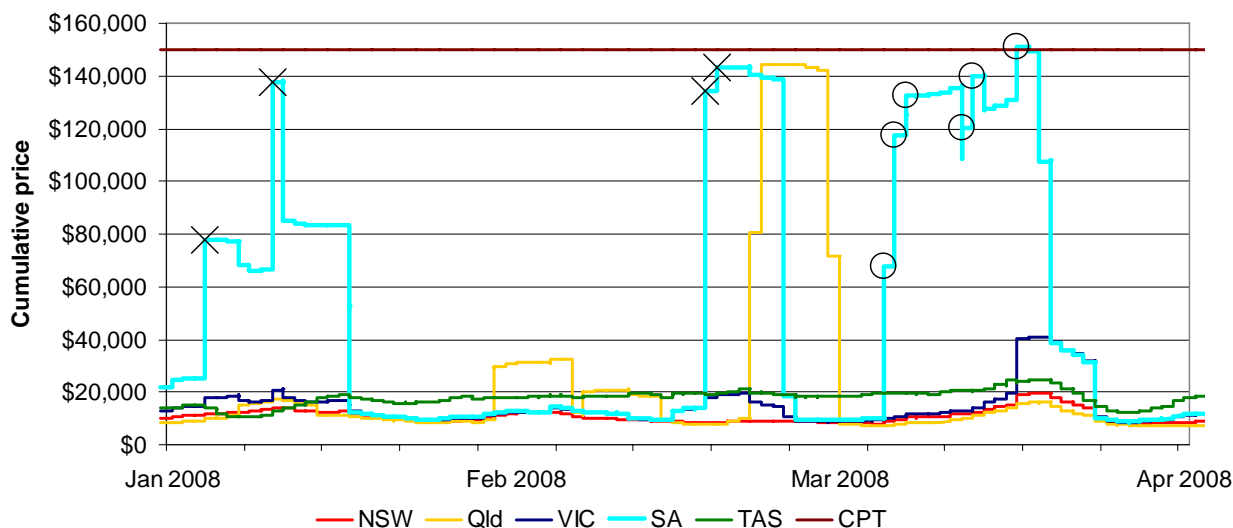
At 4.41 pm AGL rebid 740 MW of capacity across its portfolio from prices below \$150/MWh to prices above \$9000/MWh. The reason given was “Interconnector Constraint: MN20823”. The rebid references a market notice published by NEMMCO at 4.16 pm notifying NEMMCO’s decision to reclassify the Taillem Bend to Tungkillio/Cherry Gardens transmission lines as a credible contingency. Refer to the ‘Changes to network availability’ section for more information. This rebid, combined with the reduced import capability, caused the high prices to continue for an hour longer than forecast.

- On 13 March, all eight units at Torrens Island were online (a total of 1280 MW) with 280 MW offered at the price floor and 1000 MW priced at around the price cap.
- On 17 March, AGL’s initial offer saw three Torrens Island A units and four B units online (a total of 1160 MW) with 250 MW offered at the price floor and 910 MW offered above \$5000/MWh. At 7.10 am AGL rebid 580 MW from prices above \$5000/MWh to prices below \$60/MWh. The reason given was “20:02 N Predispatch Demand change: Increase in Vic Demand”. This left 310 MW priced above \$5000/MWh at the time of high prices.

On average during the high priced periods on 5, 6, 12 and 13 March, AGL offered around 80 per cent (or up to 1000 MW) of capacity at Torrens Island power station at prices above \$9000/MWh. On 7 March 80 per cent of capacity at Torrens Island power station was offered at around \$7000/MWh. The 50 MW Angaston units, owned by Infratil but controlled by AGL, had all capacity priced at or close to the price cap at times of high prices and priced lower than \$500/MWh at other times.

Figure 1 shows the seven day rolling cumulative price for each region together with the cumulative price threshold (CPT) of \$150 000. The six high priced days covered by this report are circled in the graph - the other four days when the spot price in South Australia exceeded \$5000/MWh, earlier in the year, and that were covered in a separate report are shown with a cross. The graph shows that the cumulative price was close to the threshold for the whole period of the heatwave before being breached at 5 pm on 17 March. The following day saw much cooler conditions and lower demand in South Australia.

Figure 1: Seven day rolling cumulative price and CPT



Appendix B shows for all participants in South Australia, the capacity that was presented at prices above \$5000/MWh and the amount of capacity not presented to the market when compared to the summer ratings of the plant. The closing bids for all participants in South Australia with capacity priced at or above \$5000/MWh during the high priced periods are presented in **Appendix C**.

The generators involved in setting the spot price above \$5000/MWh on the six high priced days are detailed in **Appendix D**.

Changes to network availability

Until November 2007, the Heywood interconnector had been generally capable of importing 460 MW of electricity into South Australia from Victoria. However, ElectraNet SA, the South Australian transmission network service provider, twice reduced this import limit in November and December 2007, such that the maximum that could be imported into South Australia via Heywood during the high priced periods was 360 MW.² As a result, during the high priced periods the combined import limit into South Australia across the Murraylink and Heywood interconnectors was less than 450 MW, which is considerably lower than the 700 MW assumed available to market participants through the inter-regional settlement residue auction process.

On 12 March between 4.05 pm and 6.45 pm, lightning in the vicinity of Tailem Bend led to the coincident loss of the Tailem Bend to Tungkillo and Tailem Bend to Cherry Gardens 275 kV lines being reclassified as a credible contingency. The constraint invoked to manage the reclassification limited the combined output from generation in the south east of South Australia and flows into South Australia across the Heywood interconnector. Imports across the Heywood interconnector were reduced by around 260 MW to less than 120 MW.

² For more information refer to the AER's 4 and 10 January, 18 and 19 February 2008 \$5000/MWh report published in March 2008 available at www.aer.gov.au.

Administered pricing

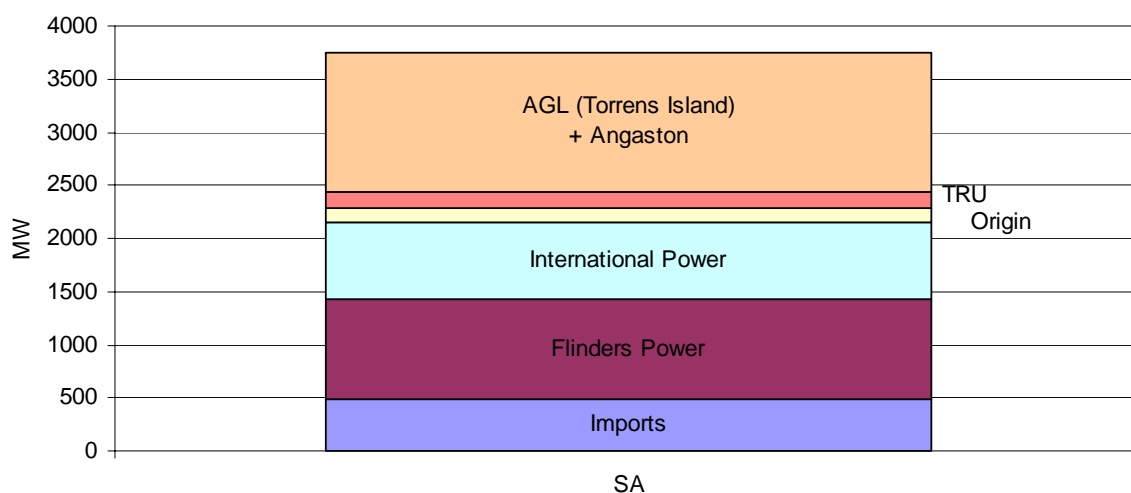
There is a Cumulative Price Threshold (CPT) built into the Rules which restricts the cumulative spot market price over a week from exceeding the threshold of \$150 000. The Rules state that when the sum of the prices over the previous week exceeds the CPT then administered pricing is to apply. Administered pricing caps the price to \$100/MWh during peak periods and \$50/MWh at other times³.

This threshold had never been breached in the 10 years since the market commenced in 1998. However, on the last day of the heatwave in South Australia the cumulative price exceeded this threshold, which resulted in administered pricing in South Australia for the remainder of the day.

The rolling seven day cumulative price in South Australia was close to the CPT for the whole period of the heatwave and exceeded the CPT at 5 pm on 17 March—the last day of the heatwave. Administered pricing continued to apply until the end of the 18 March trading day. As a result of the administered pricing period, the spot price in South Australia was reduced by the administered price cap 11 times. On eight occasions the price in Victoria was reduced as a result of price scaling across the Victoria to South Australia interconnector, which is required in order to avoid negative inter-regional settlement residues. The price in the Snowy region was also scaled down on five occasions, whilst the New South Wales and Queensland prices were scaled down for one trading interval. **Appendix E** details the periods where spot prices were administered during the administered pricing period.

It is likely that the existence of the CPT and the threat of administered pricing mitigated the number of times that the spot price exceeded \$5000/MWh. **Figure 2** shows the installed generation capacity by participant and the total import capability in South Australia that together make up the supply options to meet demand. As the figure shows, when demand exceeds 2500 MW, Torrens Island power station must be dispatched. That is, when demand exceeds 2500 MW Torrens Island power station becomes the marginal generator.

Figure 2: Supply options in South Australia



The CPT and administered pricing arrangements are likely to have reduced AGL's incentive to offer its capacity at the price cap (\$10 000/MWh). At the commencement of the heatwave, the cumulative price was \$10 300. Over the next three days, the spot price approached

³ The AEMC completed a review of the administered price cap (APC) on 21 May 2008. The AEMC determined that from 25 May 2008 the APC is \$300/MWh for all regions for all time periods.

\$10 000/MWh on 13 occasions, with the cumulative price reaching \$132 000 on 7 March. On all of these occasions, AGL set the spot market price. As shown in **Figure 3**, for the next four days, despite demand being at or above 2500 MW the spot price did not exceed \$400/MWh. This can be compared to the previous period when demand above 2500 MW led to the spot price approaching \$10 000/MWh. On 12 March 2008, which is seven days into the high priced period, if AGL had continued the bidding behaviour of the previous four days then the cumulative price would have fallen significantly. However, the bidding strategy of AGL on 12 March saw spot prices returning to levels close to \$10 000/MWh. This caused the level of the cumulative price to be maintained at above \$120 000. This is illustrated in **Figure 4**.

Figure 3: Seven day rolling cumulative price, spot price and the maximum daily demand

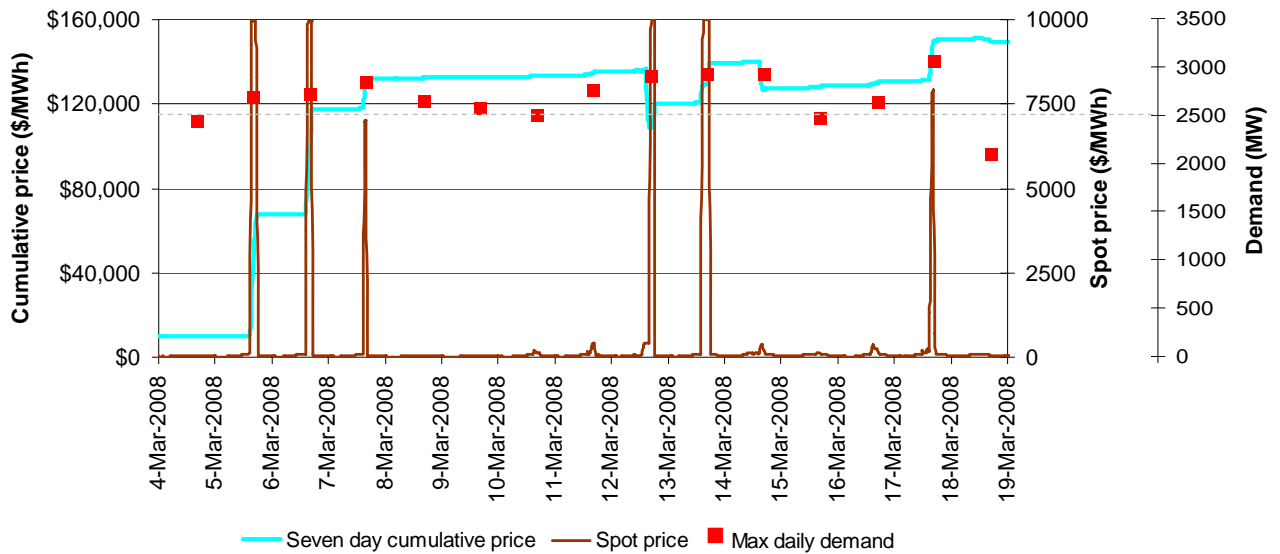
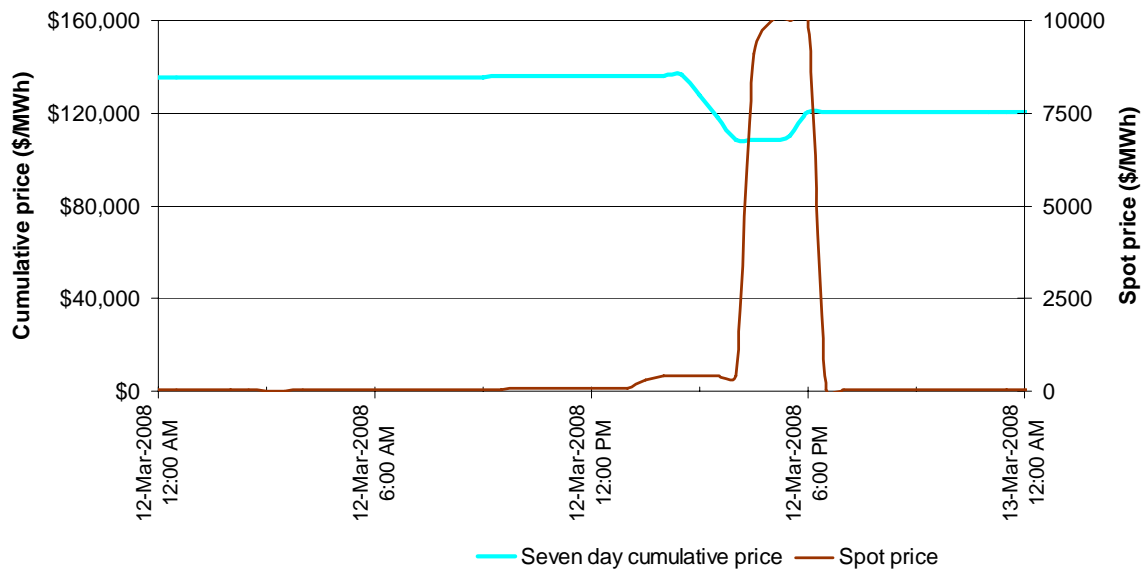


Figure 4: Seven day rolling cumulative price and spot price—12 March 2008



Appendix A - Actual and forecast demand

On each day of high prices, the demand in South Australia peaked above 2700 MW. New record demands of 2923 MW, 2935 MW and 3077 MW occurred on 12, 13 and 17 March respectively.⁴

Apart from 6 and 13 March, demand was generally closely aligned with the forecasts made four and 12 hours ahead of dispatch. On 6 and 13 March, demand was up to 150 MW higher than that forecast four hours ahead of dispatch. **Figure A1** identifies the trading intervals in which the spot price exceeded \$5000/MWh. The South Australia spot price and demand for each trading interval and the demand forecast error made four hours ahead of dispatch is detailed.

Figure A1: South Australia spot price and demand

Time	Spot price	Actual demand (MW)	4 hr ahead forecast spot price	4 hr ahead forecast demand error (MW)
Wednesday, 5 March 2008				
3:00 pm	\$9252	2598	\$9950	-33
3:30 pm	\$9950	2624	\$9950	-39
4:00 pm	\$9975	2679	\$9950	0
4:30 pm	\$9967	2703	\$9951	16
5:00 pm	\$9950	2697	\$9948	20
5:30 pm	\$8300	2675	\$8726	27
Thursday, 6 March 2008				
3:00 pm	\$9717	2689	\$575	155
3:30 pm	\$9950	2707	\$500	105
4:00 pm	\$9951	2740	\$1560	130
4:30 pm	\$9951	2735	\$1800	75
5:00 pm	\$9950	2715	\$1000	76
Friday, 7 March 2008				
3:30 pm	\$6979	2758	\$6954	-7
4:00 pm	\$7004	2809	\$6954	37
Wednesday, 12 March 2008				
4:30 pm	\$10 000	2915	\$10 000	10
5:00 pm	\$10 000	2877	\$10 000	-19
5:30 pm	\$10 000	2824	\$56	-49
6:00 pm	\$10 000	2769	\$56	-20
Thursday, 13 March 2008				
2:30 pm	\$8352	2865	\$391	154
3:00 pm	\$10 000	2847	\$968	116
3:30 pm	\$10 000	2876	\$10 000	114
4:00 pm	\$10 000	2904	\$10 000	72
4:30 pm	\$10 000	2935	\$10 000	47
5:00 pm	\$10 000	2925	\$10 000	63
5:30 pm	\$10 000	2900	\$10 000	87
Monday, 17 Mar 2008				
4:00 pm	\$7570	3031	\$354	85
4:30 pm	\$7894	3077	\$362	122

⁴ The demand, based on dispatchable generation (including wind farms at Lake Bonney stage 2 and Hallett) reached 2923 MW, 2934 MW and 3077 MW on 12, 13 and 17 March. When nondispatchable generation is included (wind farms at Cathedral rocks, Canunda, Lake Bonney stage 1, Mount Millar, Snowtown, Starfish Hill and Wattle Point) the demand on the same days reached 2944 MW, 3147 MW and 3155 MW. Prior to this week, on the same basis the maximum demand was 2985 MW on Tuesday 19 February.

Reserves

NEMMCO is required to assess whether sufficient generation is offered into the market to meet the forecast demands plus provide sufficient reserves to ensure reliability. These extra reserves provide a margin for risk management and ensure that the system remains stable even in the event of a failure of a generator. When reserves fall below the minimum required to ensure reliability NEMMCO publishes notification to the market to elicit a response. South Australia was forecast to have periods of low reserves for each of the six high priced days. The estimated LRC (Low Reserve Condition) deficiency in South Australia ranged from 74 MW on 5 March to 357 MW on 17 March. Market responses to the low reserve forecasts resolved the reserve shortfalls for five of the six days. Accordingly, whilst two days showed a reserve deficiency, at no stage was there a physical shortage of generation. Further details on these days are listed below:

- On 12 March, at 9.56 am, NEMMCO forecast LRC condition in South Australia for the period between 2 pm and 5.30 pm. At 2.44 pm NEMMCO declared an actual Lack of Reserve level 1 (LOR1⁵).
- On 17 March, at 3.19 pm NEMMCO declared an actual LOR1 in South Australia between 3.30 pm and 6.30 pm.

Despite the record demands and periods of low reserves the system remained reliable throughout the whole period.

⁵ An LOR1 condition is when available reserves are below the sum of the largest and second largest contingencies.

Appendix B – Capacity offered in South Australia

Figures B1-B6 shows for all participants in South Australia the capacity that was presented at prices above \$5000/MWh and the amount of capacity not presented to the market when compared to the summer ratings of the plant⁶. It also shows a combined total of high priced or unavailable capacity as a percentage of the summer rating.

Figure B1: Capacity offered in South Australia - Wednesday 5 March between 3 pm and 5 pm

Participant	Summer rating	Capacity priced above \$5000/MWh	Capacity not presented	Combined total as % of summer rating**
AGL	1260	720	350	85%
Flinders Power	947	0	40	4%
Infratil	49	49	0	100%
International Power (Pelican Point)	450	0	-10*	-2%
International Power (Synergen)	269	0	-30*	-11%
Origin Energy	146	0	-12*	-8%
TRU Energy	151	0	1	1%
TOTAL	3272	769	339	24%

* A negative value indicates that more capacity was presented across the portfolio than the summer rating on the plant.

** This column shows capacity priced above \$5000/MWh and capacity not presented as a proportion of each generator's summer rated capacity.

Figure B2: Capacity offered in South Australia - Thursday 6 March between 3 pm and 5 pm

Participant	Summer rating	Capacity priced above \$5000/MWh	Capacity not presented	Combined total as % of summer rating**
AGL	1260	810	230	83%
Flinders Power	947	0	40	4%
Infratil	49	49	0	100%
International Power (Pelican Point)	450	0	-13*	-3%
International Power (Synergen)	269	1	-23*	-8%
Origin Energy	146	0	-10*	-7%
TRU Energy	151	0	1	1%
TOTAL	3272	860	225	24%

Figure B3: Capacity offered in South Australia - Friday 7 March between 3.30 pm and 4 pm

Participant	Summer rating	Capacity priced above \$5000/MWh	Capacity not presented	Combined total as % of summer rating**
AGL	1260	810	230	83%
Flinders Power	947	0	40	4%
Infratil	49	49	0	100%
International Power (Pelican Point)	450	0	-10*	-2%
International Power (Synergen)	269	0	-37*	-14%
Origin Energy	146	0	-8	-5%
TRUenergy	151	0	1	1%
TOTAL	3272	859	216	24%

⁶ Summer ratings are sourced from NEMMCO's 2007 SOO.

Figure B4: Capacity offered in South Australia - Wed 12 March between 2.30 pm and 5.30 pm

Participant	Summer rating	Capacity priced above \$5000/MWh	Capacity not presented	Combined total as % of summer rating**
AGL	1260	740	310	83%
Flinders Power	947	0	50	5%
Infratil	49	49	0	100%
International Power (Pelican Point)	450	0	-10*	-2%
International Power (Synergen)	269	0	-37*	-14%
Origin Energy	146	0	-10*	-7%
TRUenergy	151	0	1	1%
TOTAL	3272	789	305	24%

Figure B5: Capacity offered in South Australia - Thurs 13 March between 4 pm and 4.30 pm

Participant	Summer rating	Capacity priced above \$5000/MWh	Capacity not presented	Combined total as % of summer rating**
AGL	1260	1000	-20	78%
Flinders Power	947	0	47	5%
Infratil	49	49	0	100%
International Power (Pelican Point)	450	0	0	0%
International Power (Synergen)	269	2	-31*	-11%
Origin Energy	146	0	-4*	-3%
TRUenergy	151	0	10	6%
TOTAL	3272	1051	2	25%

Figure B6: Capacity offered in South Australia - Monday 17 March between 4 pm and 4.30 pm

Participant	Summer rating	Capacity priced above \$5000/MWh	Capacity not presented	Combined total as % of summer rating**
AGL	1260	310	120	34%
Flinders Power	947	0	100	11%
Infratil	49	49	0	100%
International Power (Pelican Point)	450	0	-3*	-1%
International Power (Synergen)	269	0	-34*	-13%
Origin	146	0	4	3%
TRUenergy	151	0	-4*	-3%
TOTAL	3272	359	183	19%

Appendix C – Closing bids

Figures C1 – C12 highlight the half hour closing bids for power stations in South Australia with significant capacity priced at or above \$5000/MWh during the trading intervals in which the spot price exceeded \$5000/MWh. It also shows the generation output and the spot price (RRP).

Figure C1: Torrens Island closing bid prices, dispatch and spot price on 5 March

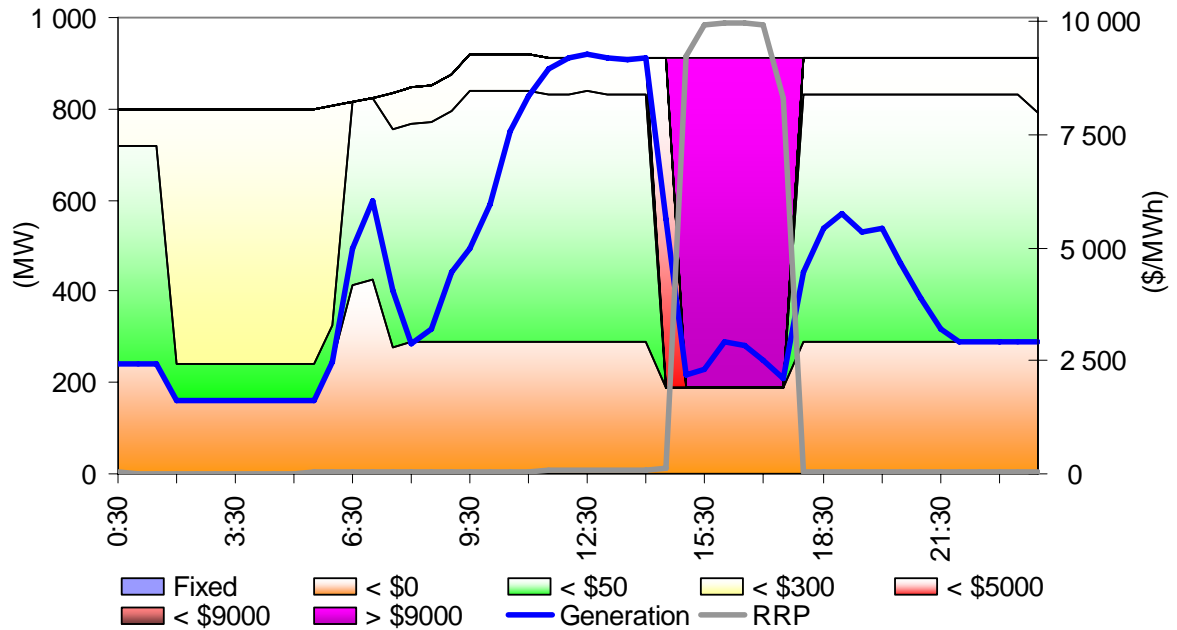


Figure C2: Angaston closing bid prices, dispatch and spot price on 5 March

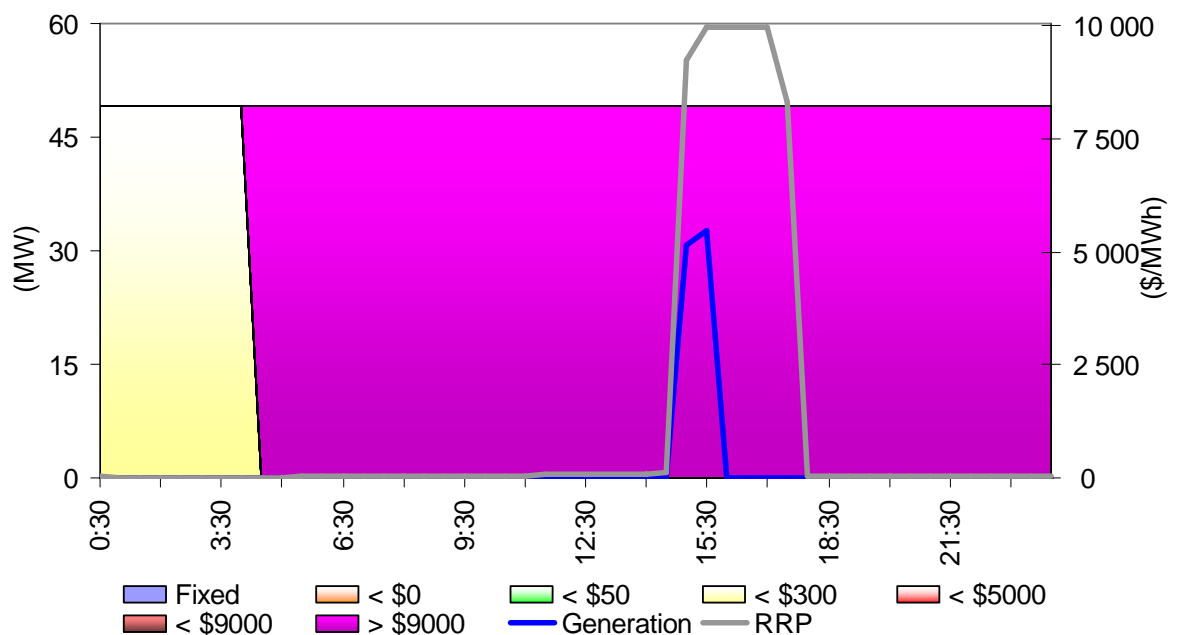


Figure C3: Torrens Island closing bid prices, dispatch and spot price on 6 March

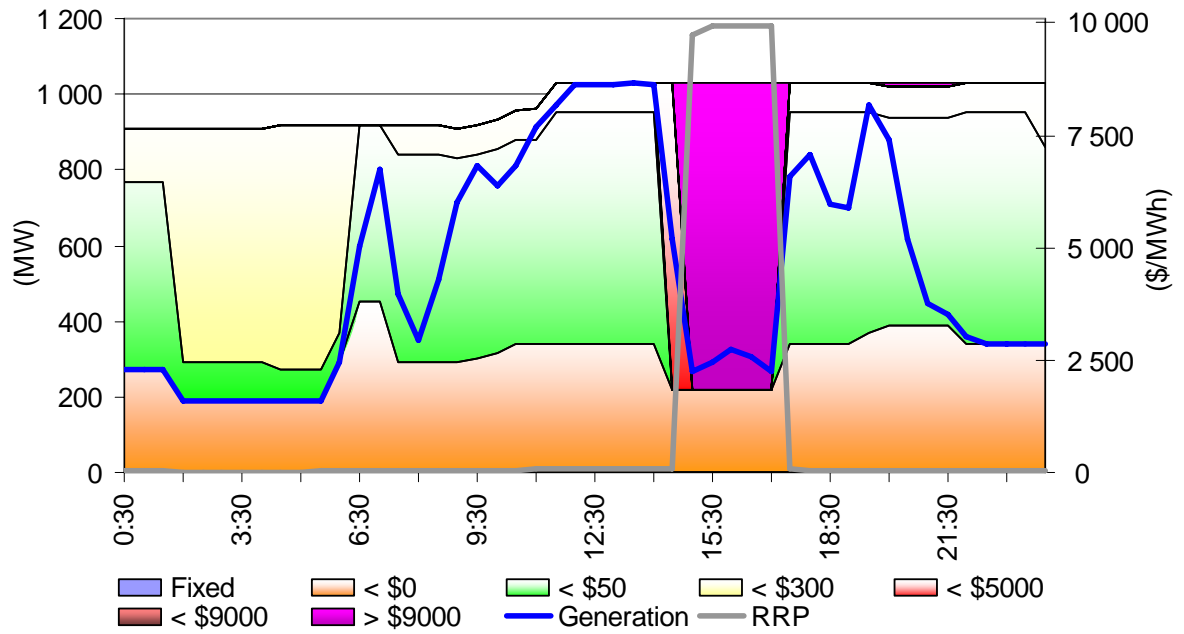


Figure C4: Angaston closing bid prices, dispatch and spot price on 6 March

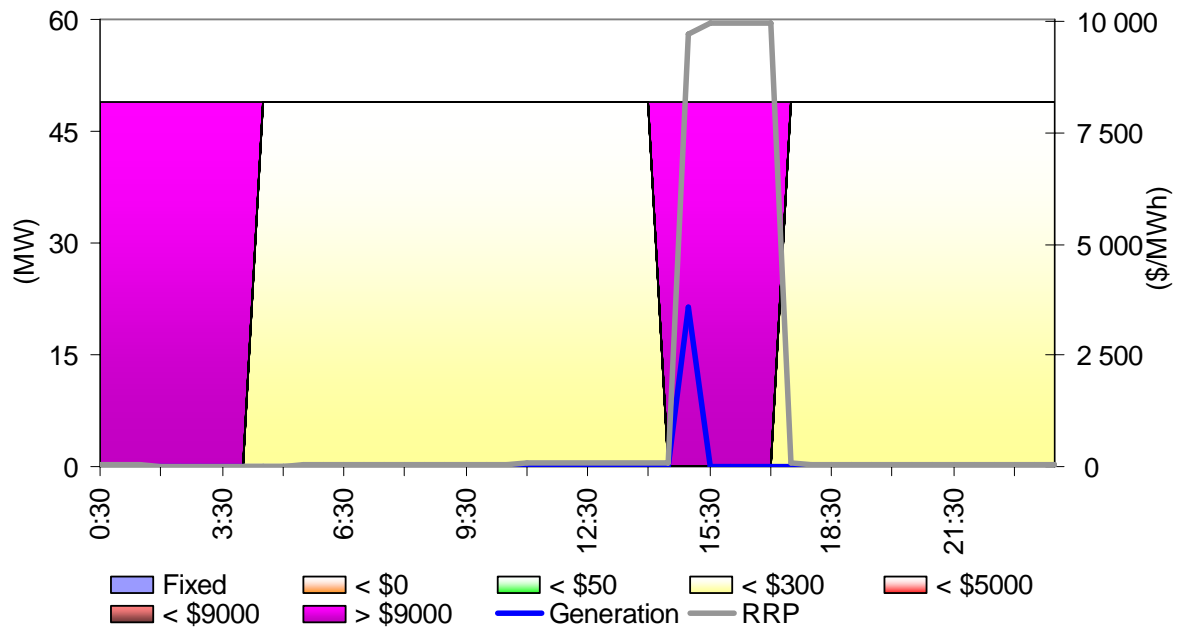


Figure C5: Torrens Island closing bid prices, dispatch and spot price on 7 March

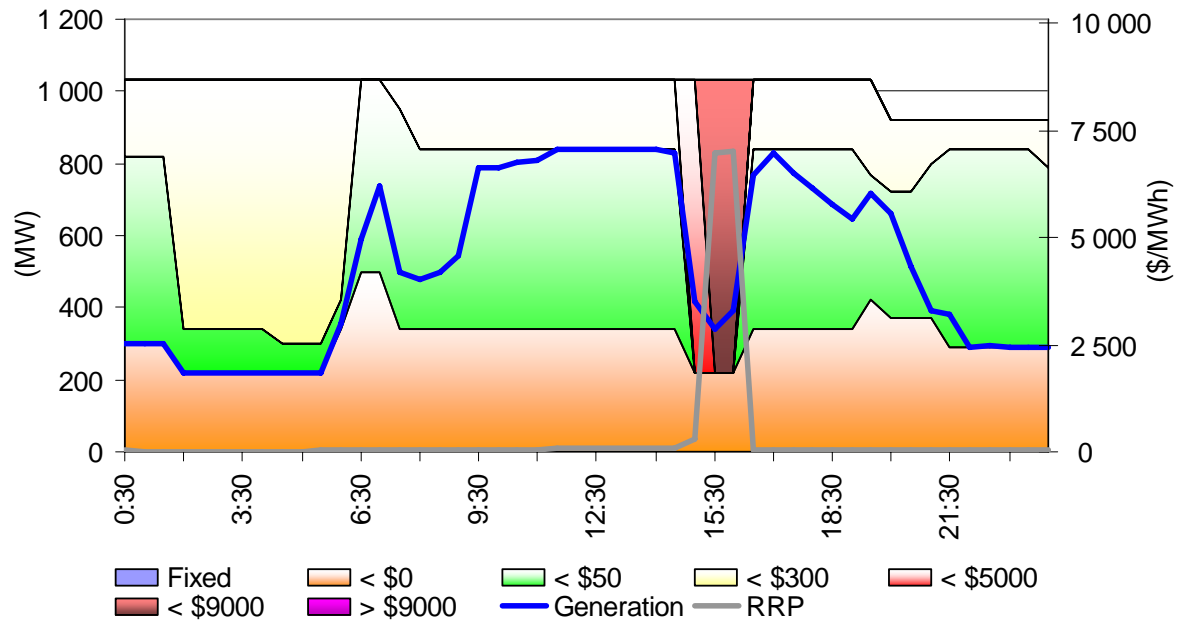


Figure C6: Angaston closing bid prices, dispatch and spot price on 7 February

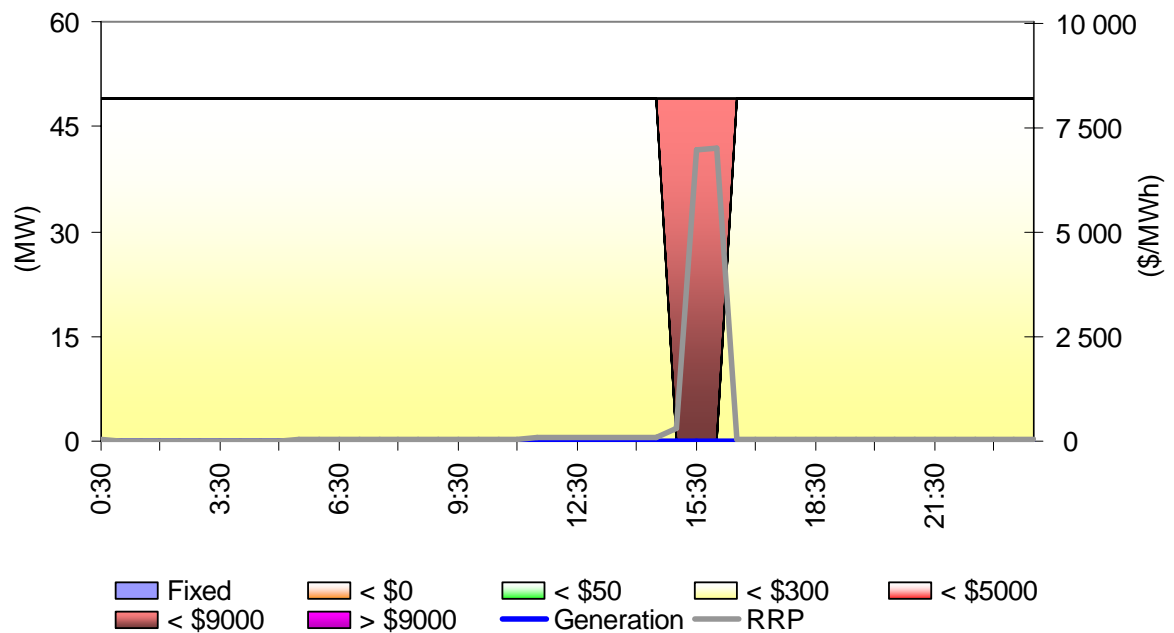


Figure C7: Torrens Island closing bid prices, dispatch and spot price on 12 March

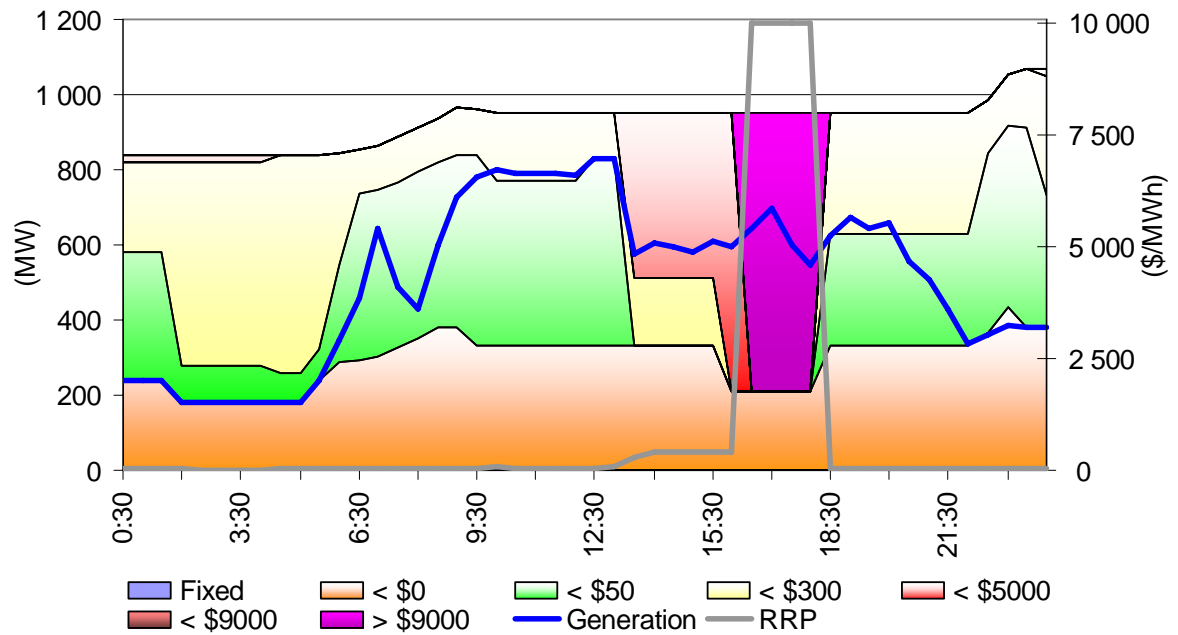


Figure C8: Angaston closing bid prices, dispatch and spot price on 12 March

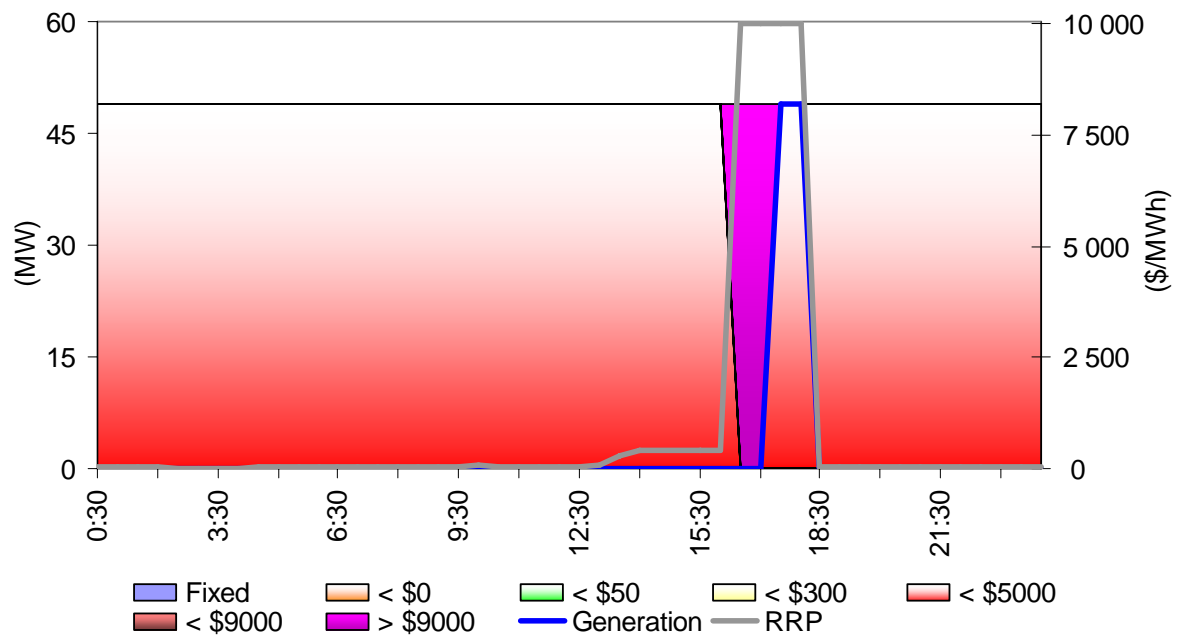


Figure C9: Torrens Island closing bid prices, dispatch and spot price on 13 March

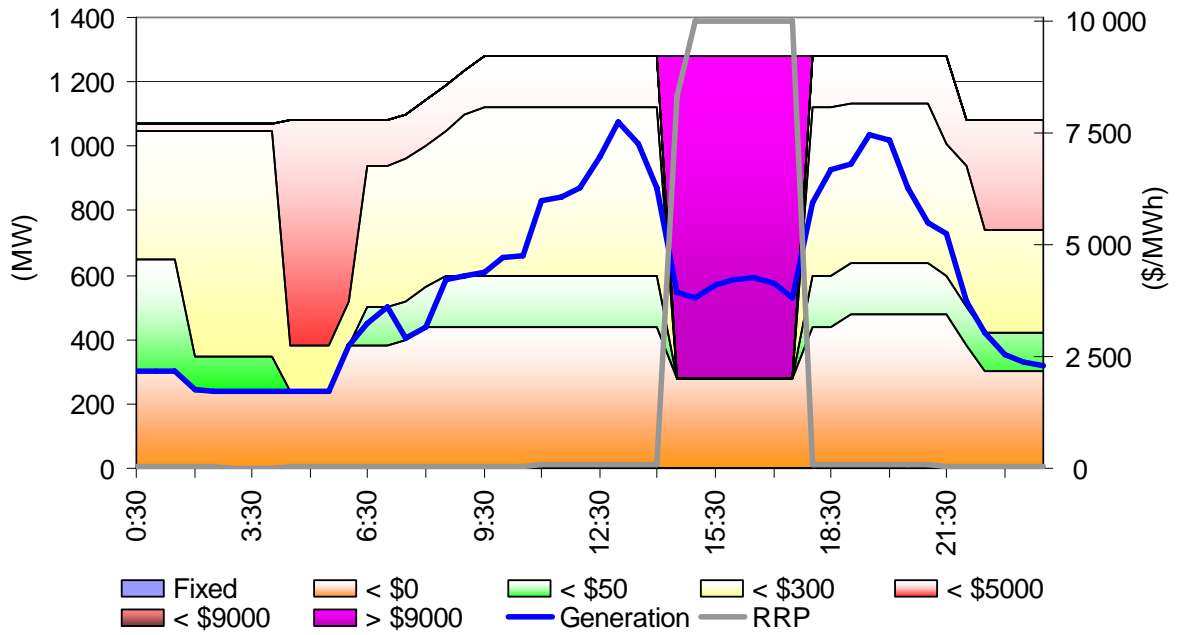


Figure C10: Angaston closing bid prices, dispatch and spot price on 13 March

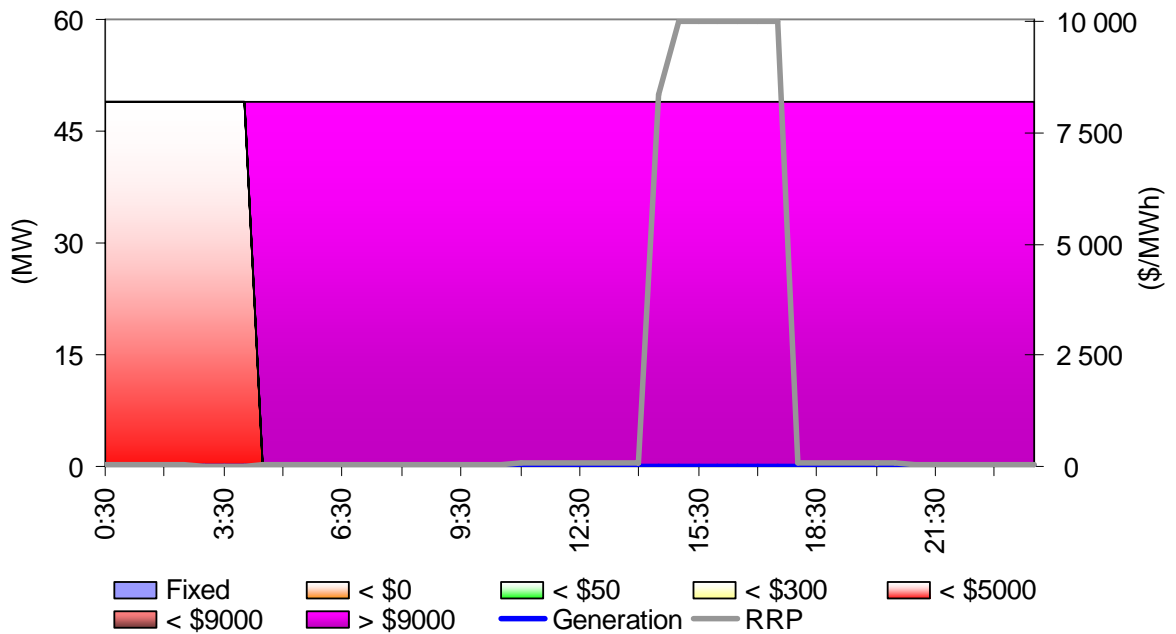


Figure C11: Torrens Island closing bid prices, dispatch and spot price on 17 March

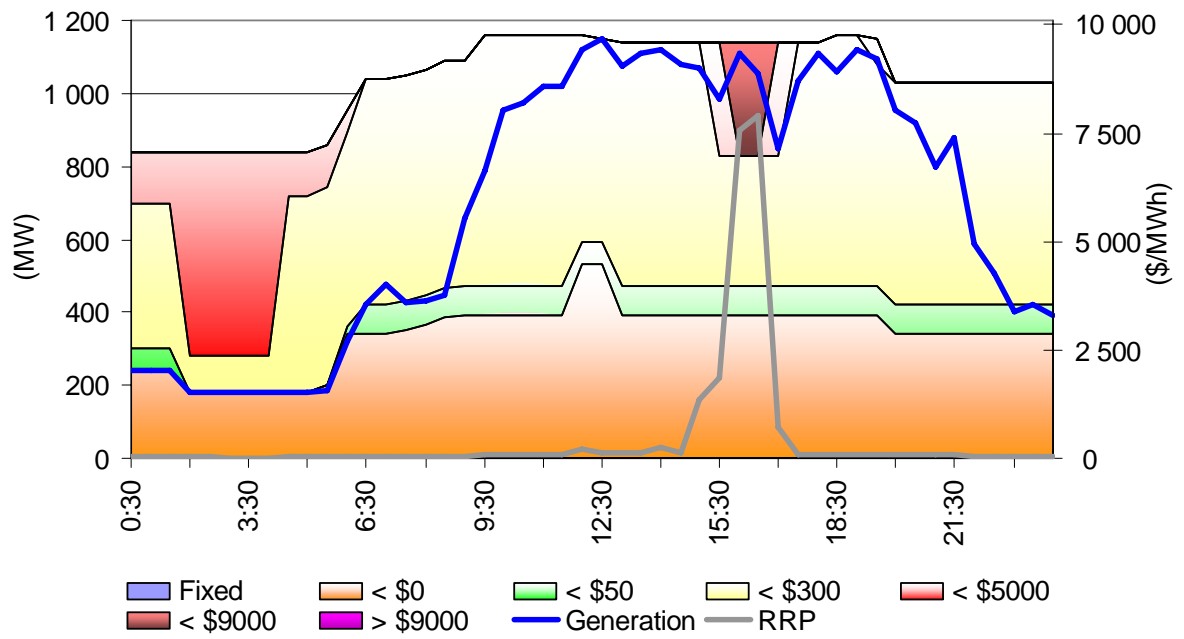
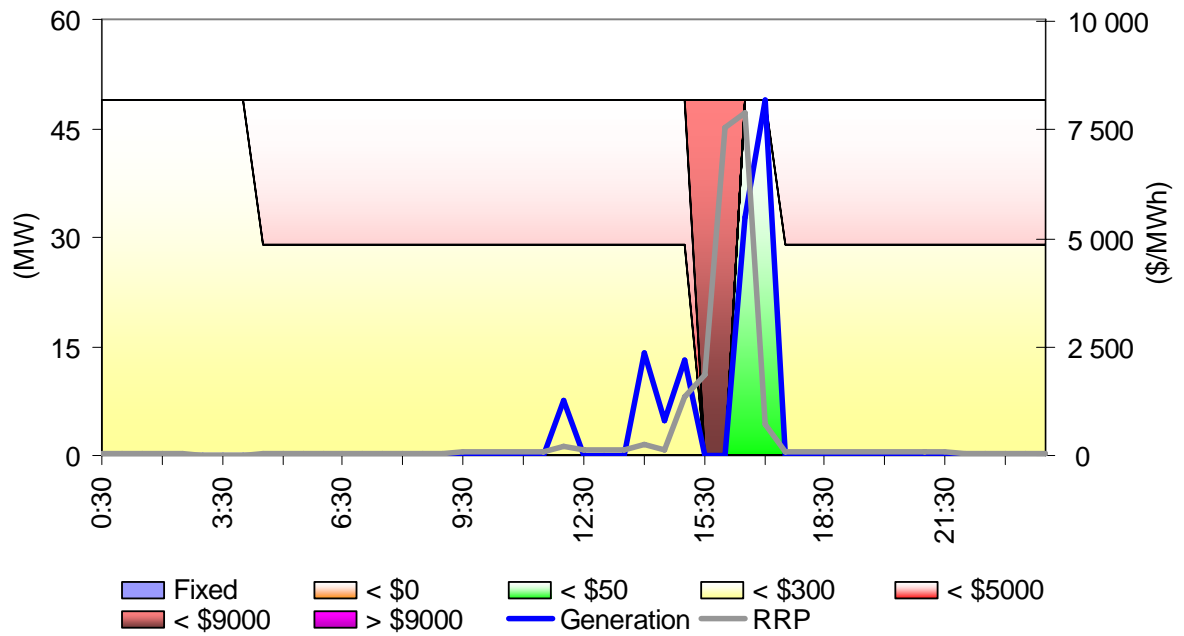


Figure C12: Angaston closing bid prices, dispatch and spot price on 17 March



Appendix D – Price setters for 5, 6, 7, 12, 13 and 17 March 2008

The following tables identify the trading intervals in which the spot price exceeded \$5000/MWh. Each five minute dispatch interval price and the generating units involved in setting the energy price, as published in the market systems are shown. This information is published by NEMMCO⁷. Also shown is the energy or ancillary service offer price involved in determining the dispatch price together with the quantity of that service and the contribution to the total energy price. The 30-minute spot price is the time weighted average of the six dispatch interval prices.

Wednesday 5 March – South Australia – 3 pm

Time	Dispatch price	Participant	Unit	Service	Offer price	Marginal change	Contribution
14:35	\$9950.74	AGL SA	TORRA1	Energy	\$9950.74	1.00	\$9950.74
14:40	\$8554.99	Infratil	ANGAS1	Energy	\$9999.78	0.52	\$5211.79
		Infratil	ANGAS2	Energy	\$9999.78	0.35	\$3474.52
		Synergen	MINTARO	Energy	-\$1000.00	0.13	-\$131.35
14:45	\$9948.39	AGL SA	TORRB1	Energy	\$9950.70	1.00	\$9950.70
		AGL SA	TORRB1	Raise 60 sec	\$0.05	1.72	\$0.09
		CS Energy	SWAN_B_4	Raise 60 sec	\$0.50	-1.72	-\$0.86
		AGL SA	TORRB1	Raise 6 sec	\$0.10	0.83	\$0.08
		TRUenergy Yallourn	YWPS3	Raise 6 sec	\$1.94	-0.83	-\$1.62
14:50	\$8554.99	Infratil	ANGAS1	Energy	\$9999.78	0.52	\$5211.79
		Infratil	ANGAS2	Energy	\$9999.78	0.35	\$3474.52
		Synergen	MINTARO	Energy	-\$1000.00	0.13	-\$131.35
14:55	\$8554.99	Infratil	ANGAS1	Energy	\$9999.78	0.52	\$5211.79
		Infratil	ANGAS2	Energy	\$9999.78	0.35	\$3474.52
		Synergen	MINTARO	Energy	-\$1000.00	0.13	-\$131.35
15:00	\$9948.32	AGL SA	TORRB2	Energy	\$9950.71	1.00	\$9950.71
		Macquarie Generation	BW02	Raise reg	\$0.02	2.85	\$0.06
		Hydro Tasmania	CETHANA	Raise reg	\$1.50	-2.85	-\$4.27
		Macquarie Generation	BW02	Raise 60 sec	\$0.02	-1.72	-\$0.03
		AGL SA	TORRB2	Raise 60 sec	\$0.05	1.72	\$0.09
		Macquarie Generation	BW02	Raise 6 sec	\$0.02	-1.72	-\$0.03
		AGL SA	TORRB2	Raise 6 sec	\$0.10	0.83	\$0.08
		TRUenergy Yallourn	YWPS1	Raise 6 sec	\$1.94	0.89	\$1.73
Spot price	\$ 9252/MWh						

Wednesday 5 March – South Australia – 3.30 pm

Time	Dispatch price	Participant	Unit	Service	Offer price	Marginal change	Contribution
15:05	\$9948.05	AGL SA	TORRB1	Energy	\$9950.70	1.00	\$9950.70
		AGL SA	TORRB1	Raise 60 sec	\$0.05	1.72	\$0.09
		Hydro Tasmania	CETHANA	Raise 60 sec	\$0.70	-1.72	-\$1.21
		AGL SA	TORRB1	Raise 6 sec	\$0.10	0.83	\$0.08
		TRUenergy Yallourn	YWPS3	Raise 6 sec	\$1.94	-0.83	-\$1.62
15:10	\$9948.40	AGL SA	TORRB2	Energy	\$9950.71	1.00	\$9950.71
		AGL SA	TORRB2	Raise 60 sec	\$0.05	1.72	\$0.09
		Ecogen	NPS	Raise 60 sec	\$0.50	-1.72	-\$0.86
		AGL SA	TORRB2	Raise 6 sec	\$0.10	0.83	\$0.08
		TRUenergy Yallourn	YWPS1	Raise 6 sec	\$1.94	-0.83	-\$1.62
15:15	\$9949.40	AGL SA	TORRB4	Energy	\$9950.73	1.00	\$9950.73
		AGL SA	TORRB4	Raise 60 sec	\$0.05	1.41	\$0.07
		LYMMCO	LYA4	Raise 60 sec	\$0.40	-1.41	-\$0.56
		AGL SA	TORRB4	Raise 6 sec	\$0.10	0.83	\$0.08
		CS Energy	CALL_B_1	Raise 6 sec	\$1.10	-0.83	-\$0.92
15:20	\$9950.21	AGL SA	TORRB1	Energy	\$9950.70	1.00	\$9950.70
		AGL SA	TORRB1	Lower reg	\$1.00	1.00	\$1.00
		Eraring Energy	ER03	Lower reg	\$1.49	-1.00	-\$1.49
15:25	\$9950.33	AGL SA	TORRB4	Energy	\$9950.73	1.00	\$9950.73
		AGL SA	TORRB2	Lower reg	\$1.00	1.00	\$1.00
		CS Energy	SWAN_E	Lower reg	\$1.40	-1.00	-\$1.40
		AGL SA	TORRB2	Raise 6 sec	\$0.50	-0.83	-\$0.42
		AGL SA	TORRB4	Raise 6 sec	\$0.50	0.83	\$0.42
15:30	\$9950.74	AGL SA	TORRA1	Energy	\$9950.74	1.00	\$9950.74
Spot price	\$ 9950/MWh						

Wednesday 5 March – South Australia – 4 pm

Time	Dispatch price	Participant	Unit	Service	Offer price	Marginal change	Contribution
15:35	\$9950.74	AGL SA	TORRA1	Energy	\$9950.74	1.00	\$9950.74
15:40	\$9950.74	AGL SA	TORRA1	Energy	\$9950.74	1.00	\$9950.74
15:45	\$9999.72	AGL SA	TORRA1	Energy	\$9999.72	0.12	\$1176.47
		AGL SA	TORRB1	Energy	\$9999.72	0.22	\$2205.84
		AGL SA	TORRB2	Energy	\$9999.72	0.22	\$2205.84
		AGL SA	TORRB3	Energy	\$9999.72	0.22	\$2205.84
		AGL SA	TORRB4	Energy	\$9999.72	0.22	\$2205.84
15:50	\$9999.72	AGL SA	TORRA1	Energy	\$9999.72	0.12	\$1176.47
		AGL SA	TORRB1	Energy	\$9999.72	0.22	\$2205.84
		AGL SA	TORRB2	Energy	\$9999.72	0.22	\$2205.84
		AGL SA	TORRB3	Energy	\$9999.72	0.22	\$2205.84
		AGL SA	TORRB4	Energy	\$9999.72	0.22	\$2205.84
		AGL SA	TORRB1	Lower reg	\$1.00	-0.22	-\$0.22
		AGL SA	TORRB2	Lower reg	\$1.00	0.22	\$0.22
15:55	\$9999.72	AGL SA	TORRA1	Energy	\$9999.72	0.12	\$1176.47
		AGL SA	TORRB1	Energy	\$9999.72	0.22	\$2205.84
		AGL SA	TORRB2	Energy	\$9999.72	0.22	\$2205.84
		AGL SA	TORRB3	Energy	\$9999.72	0.22	\$2205.84
		AGL SA	TORRB4	Energy	\$9999.72	0.22	\$2205.84
		AGL SA	TORRB1	Lower reg	\$1.00	0.22	\$0.22
		AGL SA	TORRB2	Lower reg	\$1.00	-0.22	-\$0.22
16:00	\$9950.74	AGL SA	TORRA1	Energy	\$9950.74	1.00	\$9950.74
Spot price		\$ 9975/MWh					

Wednesday 5 March – South Australia – 4.30 pm

Time	Dispatch price	Participant	Unit	Service	Offer price	Marginal change	Contribution
16:05	\$9950.36	AGL SA	TORRB4	Energy	\$9950.73	1.00	\$9950.73
		AGL SA	TORRB4	Raise 6 sec	\$0.50	0.83	\$0.42
		Stanwell	GSTONE5	Raise 6 sec	\$0.95	-0.83	-\$0.79
16:10	\$9950.74	AGL SA	TORRA1	Energy	\$9950.74	1.00	\$9950.74
16:15	\$9950.74	AGL SA	TORRA1	Energy	\$9950.74	1.00	\$9950.74
16:20	\$9999.72	AGL SA	TORRA1	Energy	\$9999.72	0.12	\$1176.47
		AGL SA	TORRB1	Energy	\$9999.72	0.22	\$2205.84
		AGL SA	TORRB2	Energy	\$9999.72	0.22	\$2205.84
		AGL SA	TORRB3	Energy	\$9999.72	0.22	\$2205.84
		AGL SA	TORRB4	Energy	\$9999.72	0.22	\$2205.84
16:25	\$9999.72	AGL SA	TORRA1	Energy	\$9999.72	0.12	\$1176.47
		AGL SA	TORRB1	Energy	\$9999.72	0.22	\$2205.84
		AGL SA	TORRB2	Energy	\$9999.72	0.22	\$2205.84
		AGL SA	TORRB3	Energy	\$9999.72	0.22	\$2205.84
		AGL SA	TORRB4	Energy	\$9999.72	0.22	\$2205.84
16:30	\$9950.74	AGL SA	TORRA1	Energy	\$9950.74	1.00	\$9950.74
Spot price		\$ 9967/MWh					

Wednesday 5 March – South Australia – 5 pm

Time	Dispatch price	Participant	Unit	Service	Offer price	Marginal change	Contribution
16:35	\$9950.35	AGL SA	TORRB3	Energy	\$9950.72	1.00	\$9950.72
		AGL SA	TORRB3	Raise 6 sec	\$0.50	0.83	\$0.42
		Stanwell	GSTONE5	Raise 6 sec	\$0.95	-0.83	-\$0.79
16:40	\$9950.30	AGL SA	TORRB1	Energy	\$9950.70	1.00	\$9950.70
		AGL SA	TORRB1	Lower reg	\$1.00	1.00	\$1.00
		CS Energy	SWAN_E	Lower reg	\$1.40	-1.00	-\$1.40
16:45	\$9950.72	AGL SA	TORRB3	Energy	\$9950.72	1.00	\$9950.72
16:50	\$9950.35	AGL SA	TORRB3	Energy	\$9950.72	1.00	\$9950.72
		AGL SA	TORRB3	Raise 6 sec	\$0.50	0.83	\$0.42
		Stanwell	GSTONE5	Raise 6 sec	\$0.95	-0.83	-\$0.79
16:55	\$9950.36	AGL SA	TORRB4	Energy	\$9950.73	1.00	\$9950.73
		AGL SA	TORRB4	Raise 6 sec	\$0.50	0.83	\$0.42
		Stanwell	STAN-1	Raise 6 sec	\$0.95	-0.83	-\$0.79
17:00	\$9950.35	AGL SA	TORRB3	Energy	\$9950.72	1.00	\$9950.72
		AGL SA	TORRB3	Raise 6 sec	\$0.50	0.83	\$0.42
		Stanwell	GSTONE5	Raise 6 sec	\$0.95	-0.83	-\$0.79
Spot price		\$ 9950/MWh					

Wednesday 5 March – South Australia – 5.30 pm

Time	Dispatch price	Participant	Unit	Service	Offer price	Marginal change	Contribution
17:05	\$9950.21	AGL SA	TORRB2	Energy	\$9950.71	1.00	\$9950.71
		AGL SA	TORRB2	Lower reg	\$1.00	1.00	\$1.00
		CS Energy	CALL_B_1	Lower reg	\$1.50	-1.00	-\$1.50
17:10	\$9950.21	AGL SA	TORRB1	Energy	\$9950.70	1.00	\$9950.70
		AGL SA	TORRB1	Lower reg	\$1.00	1.00	\$1.00
		Eraring Energy	ER03	Lower reg	\$1.49	-1.00	-\$1.49
17:15	\$9948.95	AGL SA	TORRB3	Energy	\$9950.72	1.00	\$9950.72
		AGL SA	TORRB3	Raise 60 sec	\$0.05	1.72	\$0.09
		Macquarie Generation	LD01	Raise 60 sec	\$0.40	-1.72	-\$0.69
		AGL SA	TORRB3	Raise 6 sec	\$0.10	0.83	\$0.08
		Snowy Hydro	MURRAY	Raise 6 sec	\$1.50	-0.83	-\$1.25
17:20	\$9949.95	AGL SA	TORRB1	Energy	\$9950.70	1.00	\$9950.70
		AGL SA	TORRB1	Lower reg	\$1.00	1.00	\$1.00
		CS Energy	SWAN_B_4	Lower reg	\$1.75	-1.00	-\$1.75
17:25	\$51.16	Macquarie Generation	BW02	Energy	\$32.00	1.54	\$49.34
		Macquarie Generation	BW02	Raise 60 sec	\$0.02	-0.93	-\$0.02
		Macquarie Generation	LD02	Raise 60 sec	\$0.40	0.93	\$0.37
		Macquarie Generation	BW02	Raise 6 sec	\$0.02	-0.93	-\$0.02
		CS Energy	SWAN_B_3	Raise 6 sec	\$1.60	0.93	\$1.49
17:30	\$9948.70	AGL SA	TORRB3	Energy	\$9950.72	1.00	\$9950.72
		AGL SA	TORRB3	Raise 60 sec	\$0.05	1.72	\$0.09
		CS Energy	CALL_B_1	Raise 60 sec	\$0.45	-1.72	-\$0.78
		AGL SA	TORRB3	Raise 6 sec	\$0.10	0.83	\$0.08
		CS Energy	SWAN_B_4	Raise 6 sec	\$1.70	-0.83	-\$1.42
Spot price	\$ 8300/MWh						

Thursday 6 March – South Australia – 3 pm

Time	Dispatch price	Participant	Unit	Service	Offer price	Marginal change	Contribution
14:35	\$8554.99	Infratil	ANGAS1	Energy	\$9999.78	0.52	\$5211.79
		Infratil	ANGAS2	Energy	\$9999.78	0.35	\$3474.52
		Synergen	MINTARO	Energy	-\$1000.00	0.13	-\$131.35
14:40	\$9949.76	AGL SA	TORRB2	Energy	\$9950.71	1.00	\$9950.71
		AGL SA	TORRB2	Lower reg	\$1.00	1.00	\$1.00
		Stanwell	STAN-3	Lower reg	\$1.95	-1.00	-\$1.95
14:45	\$9950.20	AGL SA	TORRB1	Energy	\$9950.70	1.00	\$9950.70
		AGL SA	TORRB1	Raise 6 sec	\$0.50	0.83	\$0.42
		CS Energy	CALL_B_1	Raise 6 sec	\$1.10	-0.83	-\$0.92
14:50	\$9950.36	AGL SA	TORRB4	Energy	\$9950.73	1.00	\$9950.73
		AGL SA	TORRB4	Raise 6 sec	\$0.50	0.83	\$0.42
		Stanwell	GSTONE2	Raise 6 sec	\$0.95	-0.83	-\$0.79
14:55	\$9950.24	AGL SA	TORRB2	Energy	\$9950.71	1.00	\$9950.71
		AGL SA	TORRB2	Raise 6 sec	\$0.50	0.83	\$0.42
		Eraring Energy	ER03	Raise 6 sec	\$1.07	-0.83	-\$0.89
15:00	\$9948.59	AGL SA	TORRB4	Energy	\$9950.73	1.00	\$9950.73
		AGL SA	TORRB4	Raise 60 sec	\$0.05	1.41	\$0.07
		Eraring Energy	ER03	Raise 60 sec	\$0.75	-1.41	-\$1.06
		AGL SA	TORRB4	Raise 6 sec	\$0.10	0.83	\$0.08
		Eraring Energy	ER04	Raise 6 sec	\$1.49	-0.83	-\$1.24
Spot price	\$ 9717/MWh						

Thursday 6 March – South Australia – 3.30 pm

Time	Dispatch price	Participant	Unit	Service	Offer price	Marginal change	Contribution
15:05	\$9950.05	AGL SA	TORRB1	Energy	\$9950.70	1.00	\$9950.70
		AGL SA	TORRB1	Lower reg	\$1.00	1.00	\$1.00
		CS Energy	SWAN_B_2	Lower reg	\$1.65	-1.00	-\$1.65
15:10	\$9949.88	AGL SA	TORRB1	Energy	\$9950.70	1.00	\$9950.70
		AGL SA	TORRB1	Raise 6 sec	\$0.50	0.83	\$0.42
		Eraring Energy	ER04	Raise 6 sec	\$1.49	-0.83	-\$1.24
15:15	\$9950.74	AGL SA	TORRA1	Energy	\$9950.74	1.00	\$9950.74
15:20	\$9950.36	AGL SA	TORRB4	Energy	\$9950.73	1.00	\$9950.73
		AGL SA	TORRB4	Raise 6 sec	\$0.50	0.83	\$0.42
		Stanwell	GSTONE2	Raise 6 sec	\$0.95	-0.83	-\$0.79
15:25	\$9950.74	AGL SA	TORRA1	Energy	\$9950.74	1.00	\$9950.74
15:30	\$9950.75	AGL SA	TORRA2	Energy	\$9950.75	1.00	\$9950.75
Spot price	\$ 9950/MWh						

Thursday 6 March – South Australia – 4 pm

Time	Dispatch price	Participant	Unit	Service	Offer price	Marginal change	Contribution
15:35	\$9950.75	AGL SA	TORRA2	Energy	\$9950.75	1.00	\$9950.75
15:40	\$9950.75	AGL SA	TORRA2	Energy	\$9950.75	1.00	\$9950.75
15:45	\$9950.75	AGL SA	TORRA2	Energy	\$9950.75	1.00	\$9950.75
15:50	\$9950.75	AGL SA	TORRA2	Energy	\$9950.75	1.00	\$9950.75
15:55	\$9950.74	AGL SA	TORRA1	Energy	\$9950.74	1.00	\$9950.74
16:00	\$9950.75	AGL SA	TORRA2	Energy	\$9950.75	1.00	\$9950.75
Spot price	\$ 9951/MWh						

Thursday 6 March – South Australia – 4.30 pm

Time	Dispatch price	Participant	Unit	Service	Offer price	Marginal change	Contribution
16:05	\$9950.74	AGL SA	TORRA1	Energy	\$9950.74	1.00	\$9950.74
16:10	\$9950.75	AGL SA	TORRA2	Energy	\$9950.75	1.00	\$9950.75
16:15	\$9950.74	AGL SA	TORRA1	Energy	\$9950.74	1.00	\$9950.74
16:20	\$9950.74	AGL SA	TORRA1	Energy	\$9950.74	1.00	\$9950.74
16:25	\$9950.74	AGL SA	TORRA1	Energy	\$9950.74	1.00	\$9950.74
16:30	\$9950.25	AGL SA	TORRB3	Energy	\$9950.72	1.00	\$9950.72
		AGL SA	TORRB3	Raise 6 sec	\$0.50	0.83	\$0.42
		Eraring Energy	ER03	Raise 6 sec	\$1.07	-0.83	-\$0.89
Spot price	\$ 9951/MWh						

Thursday 6 March – South Australia – 5 pm

Time	Dispatch price	Participant	Unit	Service	Offer price	Marginal change	Contribution
16:35	\$9950.25	AGL SA	TORRB3	Energy	\$9950.72	1.00	\$9950.72
		AGL SA	TORRB3	Raise 6 sec	\$0.50	0.83	\$0.42
		Eraring Energy	ER03	Raise 6 sec	\$1.07	-0.83	-\$0.89
16:40	\$9950.23	AGL SA	TORRB1	Energy	\$9950.70	1.00	\$9950.70
		AGL SA	TORRB1	Raise 6 sec	\$0.50	0.83	\$0.42
		Eraring Energy	ER03	Raise 6 sec	\$1.07	-0.83	-\$0.89
16:45	\$9950.22	AGL SA	TORRB2	Energy	\$9950.71	1.00	\$9950.71
		AGL SA	TORRB2	Lower reg	\$1.00	1.00	\$1.00
		Eraring Energy	ER03	Lower reg	\$1.49	-1.00	-\$1.49
16:50	\$9950.25	AGL SA	TORRB3	Energy	\$9950.72	1.00	\$9950.72
		AGL SA	TORRB3	Raise 6 sec	\$0.50	0.83	\$0.42
		Eraring Energy	ER03	Raise 6 sec	\$1.07	-0.83	-\$0.89
16:55	\$9950.30	AGL SA	TORRB3	Energy	\$9950.72	1.00	\$9950.72
		AGL SA	TORRB3	Raise 6 sec	\$0.50	0.83	\$0.42
		Hydro Tasmania	MURRAY	Raise 6 sec	\$1.00	-0.83	-\$0.83
17:00	\$9950.24	AGL SA	TORRB2	Energy	\$9950.71	1.00	\$9950.71
		AGL SA	TORRB2	Raise 6 sec	\$0.50	0.83	\$0.42
		Eraring Energy	ER03	Raise 6 sec	\$1.07	-0.83	-\$0.89
Spot price	\$ 9950/MWh						

Friday 7 March – South Australia – 3.30 pm

Time	Dispatch price	Participant	Unit	Service	Offer price	Marginal change	Contribution
15:05	\$6954.17	AGL SA	TORRA1	Energy	\$6954.17	0.50	\$3477.09
		AGL SA	TORRA2	Energy	\$6954.17	0.50	\$3477.09
15:10	\$6954.17	AGL SA	TORRA1	Energy	\$6954.17	0.50	\$3477.09
		AGL SA	TORRA2	Energy	\$6954.17	0.50	\$3477.09
15:15	\$6954.17	AGL SA	TORRA1	Energy	\$6954.17	0.50	\$3477.09
		AGL SA	TORRA2	Energy	\$6954.17	0.50	\$3477.09
15:20	\$7003.80	AGL SA	TORRB3	Energy	\$7004.20	1.00	\$7004.20
		AGL SA	TORRB3	Lower reg	\$1.00	1.00	\$1.00
		CS Energy	SWAN_E	Lower reg	\$1.40	-1.00	-\$1.40
15:25	\$7003.55	AGL SA	TORRB1	Energy	\$7004.20	0.25	\$1751.05
		AGL SA	TORRB2	Energy	\$7004.20	0.25	\$1751.05
		AGL SA	TORRB3	Energy	\$7004.20	0.25	\$1751.05
		AGL SA	TORRB4	Energy	\$7004.20	0.25	\$1751.05
		AGL SA	TORRB1	Lower reg	\$1.00	0.25	\$0.25
		AGL SA	TORRB2	Lower reg	\$1.00	0.25	\$0.25
		AGL SA	TORRB3	Lower reg	\$1.00	0.25	\$0.25
		AGL SA	TORRB4	Lower reg	\$1.00	0.25	\$0.25
		CS Energy	SWAN_B_2	Lower reg	\$1.65	-1.00	-\$1.65
15:30	\$7004.20	AGL SA	TORRA1	Energy	\$7004.20	0.11	\$737.26
		AGL SA	TORRA2	Energy	\$7004.20	0.11	\$737.26
		AGL SA	TORRB1	Energy	\$7004.20	0.20	\$1382.42
		AGL SA	TORRB2	Energy	\$7004.20	0.20	\$1382.42
		AGL SA	TORRB3	Energy	\$7004.20	0.20	\$1382.42
		AGL SA	TORRB4	Energy	\$7004.20	0.20	\$1382.42
Spot price		\$ 6979/MWh					

Friday 7 March – South Australia – 4 pm

Time	Dispatch price	Participant	Unit	Service	Offer price	Marginal change	Contribution
15:35	\$7004.20	AGL SA	TORRA1	Energy	\$7004.20	0.11	\$737.26
		AGL SA	TORRA2	Energy	\$7004.20	0.11	\$737.26
		AGL SA	TORRB1	Energy	\$7004.20	0.20	\$1382.42
		AGL SA	TORRB2	Energy	\$7004.20	0.20	\$1382.42
		AGL SA	TORRB3	Energy	\$7004.20	0.20	\$1382.42
		AGL SA	TORRB4	Energy	\$7004.20	0.20	\$1382.42
15:40	\$7004.20	AGL SA	TORRA1	Energy	\$7004.20	0.11	\$737.26
		AGL SA	TORRA2	Energy	\$7004.20	0.11	\$737.26
		AGL SA	TORRB1	Energy	\$7004.20	0.20	\$1382.42
		AGL SA	TORRB2	Energy	\$7004.20	0.20	\$1382.42
		AGL SA	TORRB3	Energy	\$7004.20	0.20	\$1382.42
		AGL SA	TORRB4	Energy	\$7004.20	0.20	\$1382.42
15:45	\$7004.20	AGL SA	TORRA1	Energy	\$7004.20	0.11	\$737.26
		AGL SA	TORRA2	Energy	\$7004.20	0.11	\$737.26
		AGL SA	TORRB1	Energy	\$7004.20	0.20	\$1382.42
		AGL SA	TORRB2	Energy	\$7004.20	0.20	\$1382.42
		AGL SA	TORRB3	Energy	\$7004.20	0.20	\$1382.42
		AGL SA	TORRB4	Energy	\$7004.20	0.20	\$1382.42
15:50	\$7004.20	AGL SA	TORRA1	Energy	\$7004.20	0.11	\$737.26
		AGL SA	TORRA2	Energy	\$7004.20	0.11	\$737.26
		AGL SA	TORRB1	Energy	\$7004.20	0.20	\$1382.42
		AGL SA	TORRB2	Energy	\$7004.20	0.20	\$1382.42
		AGL SA	TORRB3	Energy	\$7004.20	0.20	\$1382.42
		AGL SA	TORRB4	Energy	\$7004.20	0.20	\$1382.42
15:55	\$7004.20	AGL SA	TORRA1	Energy	\$7004.20	0.11	\$737.26
		AGL SA	TORRA2	Energy	\$7004.20	0.11	\$737.26
		AGL SA	TORRB1	Energy	\$7004.20	0.20	\$1382.42
		AGL SA	TORRB2	Energy	\$7004.20	0.20	\$1382.42
		AGL SA	TORRB3	Energy	\$7004.20	0.20	\$1382.42
		AGL SA	TORRB4	Energy	\$7004.20	0.20	\$1382.42
Spot price		\$ 7004/MWh					

17:00	\$9999.72	AGL SA	TORRA1	Energy	\$9999.72	0.12	\$1234.57
		AGL SA	TORRA2	Energy	\$9999.72	0.12	\$1234.57
		AGL SA	TORRA3	Energy	\$9999.72	0.12	\$1234.57
		AGL SA	TORRB1	Energy	\$9999.72	0.21	\$2098.74
		AGL SA	TORRB2	Energy	\$9999.72	0.21	\$2098.74
		AGL SA	TORRB4	Energy	\$9999.72	0.21	\$2098.74
Spot price		\$ 10 000/MWh					

Wednesday 12 March – South Australia – 5.30 pm

Time	Dispatch price	Participant	Unit	Service	Offer price	Marginal change	Contribution
17:05	\$9999.72	AGL SA	TORRA1	Energy	\$9999.72	0.12	\$1234.57
		AGL SA	TORRA2	Energy	\$9999.72	0.12	\$1234.57
		AGL SA	TORRA3	Energy	\$9999.72	0.12	\$1234.57
		AGL SA	TORRB1	Energy	\$9999.72	0.21	\$2098.74
		AGL SA	TORRB2	Energy	\$9999.72	0.21	\$2098.74
		AGL SA	TORRB4	Energy	\$9999.72	0.21	\$2098.74
17:10	\$9999.72	AGL SA	TORRA1	Energy	\$9999.72	0.12	\$1234.57
		AGL SA	TORRA2	Energy	\$9999.72	0.12	\$1234.57
		AGL SA	TORRA3	Energy	\$9999.72	0.12	\$1234.57
		AGL SA	TORRB1	Energy	\$9999.72	0.21	\$2098.74
		AGL SA	TORRB2	Energy	\$9999.72	0.21	\$2098.74
		AGL SA	TORRB4	Energy	\$9999.72	0.21	\$2098.74
17:15	\$9999.72	AGL SA	TORRA1	Energy	\$9999.72	0.12	\$1234.57
		AGL SA	TORRA2	Energy	\$9999.72	0.12	\$1234.57
		AGL SA	TORRA3	Energy	\$9999.72	0.12	\$1234.57
		AGL SA	TORRB1	Energy	\$9999.72	0.21	\$2098.74
		AGL SA	TORRB2	Energy	\$9999.72	0.21	\$2098.74
		AGL SA	TORRB4	Energy	\$9999.72	0.21	\$2098.74
17:20	\$9999.72	AGL SA	TORRA1	Energy	\$9999.72	0.12	\$1234.57
		AGL SA	TORRA2	Energy	\$9999.72	0.12	\$1234.57
		AGL SA	TORRA3	Energy	\$9999.72	0.12	\$1234.57
		AGL SA	TORRB1	Energy	\$9999.72	0.21	\$2098.74
		AGL SA	TORRB2	Energy	\$9999.72	0.21	\$2098.74
		AGL SA	TORRB4	Energy	\$9999.72	0.21	\$2098.74
17:25	\$9999.72	AGL SA	TORRA1	Energy	\$9999.72	0.12	\$1234.57
		AGL SA	TORRA2	Energy	\$9999.72	0.12	\$1234.57
		AGL SA	TORRA3	Energy	\$9999.72	0.12	\$1234.57
		AGL SA	TORRB1	Energy	\$9999.72	0.21	\$2098.74
		AGL SA	TORRB2	Energy	\$9999.72	0.21	\$2098.74
		AGL SA	TORRB4	Energy	\$9999.72	0.21	\$2098.74
17:30	\$9999.72	AGL SA	TORRA1	Energy	\$9999.72	0.12	\$1234.57
		AGL SA	TORRA2	Energy	\$9999.72	0.12	\$1234.57
		AGL SA	TORRA3	Energy	\$9999.72	0.12	\$1234.57
		AGL SA	TORRB1	Energy	\$9999.72	0.21	\$2098.74
		AGL SA	TORRB2	Energy	\$9999.72	0.21	\$2098.74
		AGL SA	TORRB4	Energy	\$9999.72	0.21	\$2098.74
Spot price		\$ 10 000/MWh					

Wednesday 12 March – South Australia – 5.30 pm

Time	Dispatch price	Participant	Unit	Service	Offer price	Marginal change	Contribution
17:35	\$9999.72	AGL SA	TORRA1	Energy	\$9999.72	0.12	\$1234.57
		AGL SA	TORRA2	Energy	\$9999.72	0.12	\$1234.57
		AGL SA	TORRA3	Energy	\$9999.72	0.12	\$1234.57
		AGL SA	TORRB1	Energy	\$9999.72	0.21	\$2098.74
		AGL SA	TORRB2	Energy	\$9999.72	0.21	\$2098.74
		AGL SA	TORRB4	Energy	\$9999.72	0.21	\$2098.74
17:40	\$9999.72	AGL SA	TORRA1	Energy	\$9999.72	0.12	\$1234.57
		AGL SA	TORRA2	Energy	\$9999.72	0.12	\$1234.57
		AGL SA	TORRA3	Energy	\$9999.72	0.12	\$1234.57
		AGL SA	TORRB1	Energy	\$9999.72	0.21	\$2098.74
		AGL SA	TORRB2	Energy	\$9999.72	0.21	\$2098.74
		AGL SA	TORRB4	Energy	\$9999.72	0.21	\$2098.74
17:45	\$9999.72	AGL SA	TORRA1	Energy	\$9999.72	0.12	\$1234.57
		AGL SA	TORRA2	Energy	\$9999.72	0.12	\$1234.57
		AGL SA	TORRA3	Energy	\$9999.72	0.12	\$1234.57
		AGL SA	TORRB1	Energy	\$9999.72	0.21	\$2098.74
		AGL SA	TORRB2	Energy	\$9999.72	0.21	\$2098.74
		AGL SA	TORRB4	Energy	\$9999.72	0.21	\$2098.74

17:50	\$9999.72	AGL SA	TORRA1	Energy	\$9999.72	0.12	\$1234.57
		AGL SA	TORRA2	Energy	\$9999.72	0.12	\$1234.57
		AGL SA	TORRA3	Energy	\$9999.72	0.12	\$1234.57
		AGL SA	TORRB1	Energy	\$9999.72	0.21	\$2098.74
		AGL SA	TORRB2	Energy	\$9999.72	0.21	\$2098.74
		AGL SA	TORRB4	Energy	\$9999.72	0.21	\$2098.74
17:55	\$9999.72	AGL SA	TORRA1	Energy	\$9999.72	0.12	\$1234.57
		AGL SA	TORRA2	Energy	\$9999.72	0.12	\$1234.57
		AGL SA	TORRA3	Energy	\$9999.72	0.12	\$1234.57
		AGL SA	TORRB1	Energy	\$9999.72	0.21	\$2098.74
		AGL SA	TORRB2	Energy	\$9999.72	0.21	\$2098.74
		AGL SA	TORRB4	Energy	\$9999.72	0.21	\$2098.74
18:00	\$9999.72	AGL SA	TORRA1	Energy	\$9999.72	0.12	\$1234.57
		AGL SA	TORRA2	Energy	\$9999.72	0.12	\$1234.57
		AGL SA	TORRA3	Energy	\$9999.72	0.12	\$1234.57
		AGL SA	TORRB1	Energy	\$9999.72	0.21	\$2098.74
		AGL SA	TORRB2	Energy	\$9999.72	0.21	\$2098.74
		AGL SA	TORRB4	Energy	\$9999.72	0.21	\$2098.74
Spot price		\$ 10 000/MWh					

Wednesday 13 March – South Australia – 2.30 pm

Time	Dispatch price	Participant	Unit	Service	Offer price	Marginal change	Contribution
14:05	\$117.24	Eraring Energy	ER01	Energy	\$100.00	0.29	\$29.31
		Eraring Energy	ER02	Energy	\$100.00	0.29	\$29.31
		Eraring Energy	ER03	Energy	\$100.00	0.29	\$29.31
		Eraring Energy	ER04	Energy	\$100.00	0.29	\$29.31
14:10	\$9998.77	AGL SA	TORRB2	Energy	\$9999.72	0.50	\$4999.86
		AGL SA	TORRB1	Energy	\$9999.72	0.50	\$4999.86
		Stanwell	GSTONE2	Lower reg	\$1.95	-1.00	-\$1.95
		AGL SA	TORRB1	Lower reg	\$1.00	0.50	\$0.50
		AGL SA	TORRB2	Lower reg	\$1.00	0.50	\$0.50
14:15	\$9999.72	AGL SA	TORRA1	Energy	\$9999.72	0.09	\$925.87
		AGL SA	TORRA2	Energy	\$9999.72	0.09	\$925.87
		AGL SA	TORRA3	Energy	\$9999.72	0.09	\$925.87
		AGL SA	TORRA4	Energy	\$9999.72	0.09	\$925.87
		AGL SA	TORRB1	Energy	\$9999.72	0.16	\$1574.06
		AGL SA	TORRB2	Energy	\$9999.72	0.16	\$1574.06
		AGL SA	TORRB3	Energy	\$9999.72	0.16	\$1574.06
		AGL SA	TORRB4	Energy	\$9999.72	0.16	\$1574.06
14:20	\$9999.72	AGL SA	TORRA1	Energy	\$9999.72	0.09	\$925.87
		AGL SA	TORRA2	Energy	\$9999.72	0.09	\$925.87
		AGL SA	TORRA3	Energy	\$9999.72	0.09	\$925.87
		AGL SA	TORRA4	Energy	\$9999.72	0.09	\$925.87
		AGL SA	TORRB1	Energy	\$9999.72	0.16	\$1574.06
		AGL SA	TORRB2	Energy	\$9999.72	0.16	\$1574.06
		AGL SA	TORRB3	Energy	\$9999.72	0.16	\$1574.06
		AGL SA	TORRB4	Energy	\$9999.72	0.16	\$1574.06
14:25	\$9999.72	AGL SA	TORRA1	Energy	\$9999.72	0.09	\$925.87
		AGL SA	TORRA2	Energy	\$9999.72	0.09	\$925.87
		AGL SA	TORRA3	Energy	\$9999.72	0.09	\$925.87
		AGL SA	TORRA4	Energy	\$9999.72	0.09	\$925.87
		AGL SA	TORRB1	Energy	\$9999.72	0.16	\$1574.06
		AGL SA	TORRB2	Energy	\$9999.72	0.16	\$1574.06
		AGL SA	TORRB3	Energy	\$9999.72	0.16	\$1574.06
		AGL SA	TORRB4	Energy	\$9999.72	0.16	\$1574.06
14:30	\$9999.72	AGL SA	TORRA1	Energy	\$9999.72	0.09	\$925.87
		AGL SA	TORRA2	Energy	\$9999.72	0.09	\$925.87
		AGL SA	TORRA3	Energy	\$9999.72	0.09	\$925.87
		AGL SA	TORRA4	Energy	\$9999.72	0.09	\$925.87
		AGL SA	TORRB1	Energy	\$9999.72	0.16	\$1574.06
		AGL SA	TORRB2	Energy	\$9999.72	0.16	\$1574.06
		AGL SA	TORRB3	Energy	\$9999.72	0.16	\$1574.06
		AGL SA	TORRB4	Energy	\$9999.72	0.16	\$1574.06
Spot price		\$ 8352/MWh					

Wednesday 13 March – South Australia – 3 pm

Time	Dispatch price	Participant	Unit	Service	Offer price	Marginal change	Contribution
14:35	\$9999.72	AGL SA	TORRA1	Energy	\$9999.72	0.09	\$925.87
		AGL SA	TORRA2	Energy	\$9999.72	0.09	\$925.87
		AGL SA	TORRA3	Energy	\$9999.72	0.09	\$925.87
		AGL SA	TORRA4	Energy	\$9999.72	0.09	\$925.87
		AGL SA	TORRB1	Energy	\$9999.72	0.16	\$1574.06
		AGL SA	TORRB2	Energy	\$9999.72	0.16	\$1574.06
		AGL SA	TORRB3	Energy	\$9999.72	0.16	\$1574.06
		AGL SA	TORRB4	Energy	\$9999.72	0.16	\$1574.06
14:40	\$9999.72	AGL SA	TORRA1	Energy	\$9999.72	0.09	\$925.87
		AGL SA	TORRA2	Energy	\$9999.72	0.09	\$925.87
		AGL SA	TORRA3	Energy	\$9999.72	0.09	\$925.87
		AGL SA	TORRA4	Energy	\$9999.72	0.09	\$925.87
		AGL SA	TORRB1	Energy	\$9999.72	0.16	\$1574.06
		AGL SA	TORRB2	Energy	\$9999.72	0.16	\$1574.06
		AGL SA	TORRB3	Energy	\$9999.72	0.16	\$1574.06
		AGL SA	TORRB4	Energy	\$9999.72	0.16	\$1574.06
14:45	\$9999.72	AGL SA	TORRA1	Energy	\$9999.72	0.09	\$925.87
		AGL SA	TORRA2	Energy	\$9999.72	0.09	\$925.87
		AGL SA	TORRA3	Energy	\$9999.72	0.09	\$925.87
		AGL SA	TORRA4	Energy	\$9999.72	0.09	\$925.87
		AGL SA	TORRB1	Energy	\$9999.72	0.16	\$1574.06
		AGL SA	TORRB2	Energy	\$9999.72	0.16	\$1574.06
		AGL SA	TORRB3	Energy	\$9999.72	0.16	\$1574.06
		AGL SA	TORRB4	Energy	\$9999.72	0.16	\$1574.06
14:50	\$9999.72	AGL SA	TORRA1	Energy	\$9999.72	0.09	\$925.87
		AGL SA	TORRA2	Energy	\$9999.72	0.09	\$925.87
		AGL SA	TORRA3	Energy	\$9999.72	0.09	\$925.87
		AGL SA	TORRA4	Energy	\$9999.72	0.09	\$925.87
		AGL SA	TORRB1	Energy	\$9999.72	0.16	\$1574.06
		AGL SA	TORRB2	Energy	\$9999.72	0.16	\$1574.06
		AGL SA	TORRB3	Energy	\$9999.72	0.16	\$1574.06
		AGL SA	TORRB4	Energy	\$9999.72	0.16	\$1574.06
14:55	\$9999.72	AGL SA	TORRA1	Energy	\$9999.72	0.09	\$925.87
		AGL SA	TORRA2	Energy	\$9999.72	0.09	\$925.87
		AGL SA	TORRA3	Energy	\$9999.72	0.09	\$925.87
		AGL SA	TORRA4	Energy	\$9999.72	0.09	\$925.87
		AGL SA	TORRB1	Energy	\$9999.72	0.16	\$1574.06
		AGL SA	TORRB2	Energy	\$9999.72	0.16	\$1574.06
		AGL SA	TORRB3	Energy	\$9999.72	0.16	\$1574.06
		AGL SA	TORRB4	Energy	\$9999.72	0.16	\$1574.06
15:00	\$9999.72	AGL SA	TORRA1	Energy	\$9999.72	0.09	\$925.87
		AGL SA	TORRA2	Energy	\$9999.72	0.09	\$925.87
		AGL SA	TORRA3	Energy	\$9999.72	0.09	\$925.87
		AGL SA	TORRA4	Energy	\$9999.72	0.09	\$925.87
		AGL SA	TORRB1	Energy	\$9999.72	0.16	\$1574.06
		AGL SA	TORRB2	Energy	\$9999.72	0.16	\$1574.06
		AGL SA	TORRB3	Energy	\$9999.72	0.16	\$1574.06
		AGL SA	TORRB4	Energy	\$9999.72	0.16	\$1574.06
Spot price		\$ 10 000/MWh					

Wednesday 13 March – South Australia – 3.30 pm

Time	Dispatch price	Participant	Unit	Service	Offer price	Marginal change	Contribution
15:05	\$9999.72	AGL SA	TORRA1	Energy	\$9999.72	0.09	\$925.87
		AGL SA	TORRA2	Energy	\$9999.72	0.09	\$925.87
		AGL SA	TORRA3	Energy	\$9999.72	0.09	\$925.87
		AGL SA	TORRA4	Energy	\$9999.72	0.09	\$925.87
		AGL SA	TORRB1	Energy	\$9999.72	0.16	\$1574.06
		AGL SA	TORRB2	Energy	\$9999.72	0.16	\$1574.06
		AGL SA	TORRB3	Energy	\$9999.72	0.16	\$1574.06
		AGL SA	TORRB4	Energy	\$9999.72	0.16	\$1574.06
15:10	\$9999.72	AGL SA	TORRA1	Energy	\$9999.72	0.09	\$925.87
		AGL SA	TORRA2	Energy	\$9999.72	0.09	\$925.87
		AGL SA	TORRA3	Energy	\$9999.72	0.09	\$925.87
		AGL SA	TORRA4	Energy	\$9999.72	0.09	\$925.87
		AGL SA	TORRB1	Energy	\$9999.72	0.16	\$1574.06
		AGL SA	TORRB2	Energy	\$9999.72	0.16	\$1574.06
		AGL SA	TORRB3	Energy	\$9999.72	0.16	\$1574.06
		AGL SA	TORRB4	Energy	\$9999.72	0.16	\$1574.06
15:15	\$9999.72	AGL SA	TORRA1	Energy	\$9999.72	0.09	\$925.87
		AGL SA	TORRA2	Energy	\$9999.72	0.09	\$925.87
		AGL SA	TORRA3	Energy	\$9999.72	0.09	\$925.87
		AGL SA	TORRA4	Energy	\$9999.72	0.09	\$925.87
		AGL SA	TORRB1	Energy	\$9999.72	0.16	\$1574.06
		AGL SA	TORRB2	Energy	\$9999.72	0.16	\$1574.06
		AGL SA	TORRB3	Energy	\$9999.72	0.16	\$1574.06
		AGL SA	TORRB4	Energy	\$9999.72	0.16	\$1574.06
15:20	\$9999.72	AGL SA	TORRA1	Energy	\$9999.72	0.09	\$925.87
		AGL SA	TORRA2	Energy	\$9999.72	0.09	\$925.87
		AGL SA	TORRA3	Energy	\$9999.72	0.09	\$925.87
		AGL SA	TORRA4	Energy	\$9999.72	0.09	\$925.87
		AGL SA	TORRB1	Energy	\$9999.72	0.16	\$1574.06
		AGL SA	TORRB2	Energy	\$9999.72	0.16	\$1574.06
		AGL SA	TORRB3	Energy	\$9999.72	0.16	\$1574.06
		AGL SA	TORRB4	Energy	\$9999.72	0.16	\$1574.06
15:25	\$9999.72	AGL SA	TORRA1	Energy	\$9999.72	0.09	\$925.87
		AGL SA	TORRA2	Energy	\$9999.72	0.09	\$925.87
		AGL SA	TORRA3	Energy	\$9999.72	0.09	\$925.87
		AGL SA	TORRA4	Energy	\$9999.72	0.09	\$925.87
		AGL SA	TORRB1	Energy	\$9999.72	0.16	\$1574.06
		AGL SA	TORRB2	Energy	\$9999.72	0.16	\$1574.06
		AGL SA	TORRB3	Energy	\$9999.72	0.16	\$1574.06
		AGL SA	TORRB4	Energy	\$9999.72	0.16	\$1574.06
15:30	\$9999.72	AGL SA	TORRA1	Energy	\$9999.72	0.09	\$925.87
		AGL SA	TORRA2	Energy	\$9999.72	0.09	\$925.87
		AGL SA	TORRA3	Energy	\$9999.72	0.09	\$925.87
		AGL SA	TORRA4	Energy	\$9999.72	0.09	\$925.87
		AGL SA	TORRB1	Energy	\$9999.72	0.16	\$1574.06
		AGL SA	TORRB2	Energy	\$9999.72	0.16	\$1574.06
		AGL SA	TORRB3	Energy	\$9999.72	0.16	\$1574.06
		AGL SA	TORRB4	Energy	\$9999.72	0.16	\$1574.06
Spot price		\$ 10 000/MWh					

Wednesday 13 March – South Australia – 4 pm

Time	Dispatch price	Participant	Unit	Service	Offer price	Marginal change	Contribution
15:35	\$9999.72	AGL SA	TORRA1	Energy	\$9999.72	0.09	\$925.87
		AGL SA	TORRA2	Energy	\$9999.72	0.09	\$925.87
		AGL SA	TORRA3	Energy	\$9999.72	0.09	\$925.87
		AGL SA	TORRA4	Energy	\$9999.72	0.09	\$925.87
		AGL SA	TORRB1	Energy	\$9999.72	0.16	\$1574.06
		AGL SA	TORRB2	Energy	\$9999.72	0.16	\$1574.06
		AGL SA	TORRB3	Energy	\$9999.72	0.16	\$1574.06
		AGL SA	TORRB4	Energy	\$9999.72	0.16	\$1574.06
15:40	\$9999.72	AGL SA	TORRA1	Energy	\$9999.72	0.09	\$925.87
		AGL SA	TORRA2	Energy	\$9999.72	0.09	\$925.87
		AGL SA	TORRA3	Energy	\$9999.72	0.09	\$925.87
		AGL SA	TORRA4	Energy	\$9999.72	0.09	\$925.87
		AGL SA	TORRB1	Energy	\$9999.72	0.16	\$1574.06
		AGL SA	TORRB2	Energy	\$9999.72	0.16	\$1574.06
		AGL SA	TORRB3	Energy	\$9999.72	0.16	\$1574.06
		AGL SA	TORRB4	Energy	\$9999.72	0.16	\$1574.06
15:45	\$9999.72	AGL SA	TORRA1	Energy	\$9999.72	0.09	\$925.87
		AGL SA	TORRA2	Energy	\$9999.72	0.09	\$925.87
		AGL SA	TORRA3	Energy	\$9999.72	0.09	\$925.87
		AGL SA	TORRA4	Energy	\$9999.72	0.09	\$925.87
		AGL SA	TORRB1	Energy	\$9999.72	0.16	\$1574.06
		AGL SA	TORRB2	Energy	\$9999.72	0.16	\$1574.06
		AGL SA	TORRB3	Energy	\$9999.72	0.16	\$1574.06
		AGL SA	TORRB4	Energy	\$9999.72	0.16	\$1574.06
15:50	\$9999.72	AGL SA	TORRA1	Energy	\$9999.72	0.09	\$925.87
		AGL SA	TORRA2	Energy	\$9999.72	0.09	\$925.87
		AGL SA	TORRA3	Energy	\$9999.72	0.09	\$925.87
		AGL SA	TORRA4	Energy	\$9999.72	0.09	\$925.87
		AGL SA	TORRB1	Energy	\$9999.72	0.16	\$1574.06
		AGL SA	TORRB2	Energy	\$9999.72	0.16	\$1574.06
		AGL SA	TORRB3	Energy	\$9999.72	0.16	\$1574.06
		AGL SA	TORRB4	Energy	\$9999.72	0.16	\$1574.06
15:55	\$9999.72	AGL SA	TORRA1	Energy	\$9999.72	0.09	\$925.87
		AGL SA	TORRA2	Energy	\$9999.72	0.09	\$925.87
		AGL SA	TORRA3	Energy	\$9999.72	0.09	\$925.87
		AGL SA	TORRA4	Energy	\$9999.72	0.09	\$925.87
		AGL SA	TORRB1	Energy	\$9999.72	0.16	\$1574.06
		AGL SA	TORRB2	Energy	\$9999.72	0.16	\$1574.06
		AGL SA	TORRB3	Energy	\$9999.72	0.16	\$1574.06
		AGL SA	TORRB4	Energy	\$9999.72	0.16	\$1574.06
16:00	\$9999.72	AGL SA	TORRA1	Energy	\$9999.72	0.09	\$925.87
		AGL SA	TORRA2	Energy	\$9999.72	0.09	\$925.87
		AGL SA	TORRA3	Energy	\$9999.72	0.09	\$925.87
		AGL SA	TORRA4	Energy	\$9999.72	0.09	\$925.87
		AGL SA	TORRB1	Energy	\$9999.72	0.16	\$1574.06
		AGL SA	TORRB2	Energy	\$9999.72	0.16	\$1574.06
		AGL SA	TORRB3	Energy	\$9999.72	0.16	\$1574.06
		AGL SA	TORRB4	Energy	\$9999.72	0.16	\$1574.06
Spot price		\$ 10 000/MWh					

Wednesday 13 March – South Australia – 4.30 pm

Time	Dispatch price	Participant	Unit	Service	Offer price	Marginal change	Contribution
16:05	\$9999.72	AGL SA	TORRA1	Energy	\$9999.72	0.09	\$925.87
		AGL SA	TORRA2	Energy	\$9999.72	0.09	\$925.87
		AGL SA	TORRA3	Energy	\$9999.72	0.09	\$925.87
		AGL SA	TORRA4	Energy	\$9999.72	0.09	\$925.87
		AGL SA	TORRB1	Energy	\$9999.72	0.16	\$1574.06
		AGL SA	TORRB2	Energy	\$9999.72	0.16	\$1574.06
		AGL SA	TORRB3	Energy	\$9999.72	0.16	\$1574.06
		AGL SA	TORRB4	Energy	\$9999.72	0.16	\$1574.06
16:10	\$9999.72	AGL SA	TORRA1	Energy	\$9999.72	0.09	\$925.87
		AGL SA	TORRA2	Energy	\$9999.72	0.09	\$925.87
		AGL SA	TORRA3	Energy	\$9999.72	0.09	\$925.87
		AGL SA	TORRA4	Energy	\$9999.72	0.09	\$925.87
		AGL SA	TORRB1	Energy	\$9999.72	0.16	\$1574.06
		AGL SA	TORRB2	Energy	\$9999.72	0.16	\$1574.06
		AGL SA	TORRB3	Energy	\$9999.72	0.16	\$1574.06
		AGL SA	TORRB4	Energy	\$9999.72	0.16	\$1574.06
16:15	\$9999.72	AGL SA	TORRA1	Energy	\$9999.72	0.09	\$925.87
		AGL SA	TORRA2	Energy	\$9999.72	0.09	\$925.87
		AGL SA	TORRA3	Energy	\$9999.72	0.09	\$925.87
		AGL SA	TORRA4	Energy	\$9999.72	0.09	\$925.87
		AGL SA	TORRB1	Energy	\$9999.72	0.16	\$1574.06
		AGL SA	TORRB2	Energy	\$9999.72	0.16	\$1574.06
		AGL SA	TORRB3	Energy	\$9999.72	0.16	\$1574.06
		AGL SA	TORRB4	Energy	\$9999.72	0.16	\$1574.06
16:20	\$9999.72	AGL SA	TORRA1	Energy	\$9999.72	0.09	\$925.87
		AGL SA	TORRA2	Energy	\$9999.72	0.09	\$925.87
		AGL SA	TORRA3	Energy	\$9999.72	0.09	\$925.87
		AGL SA	TORRA4	Energy	\$9999.72	0.09	\$925.87
		AGL SA	TORRB1	Energy	\$9999.72	0.16	\$1574.06
		AGL SA	TORRB2	Energy	\$9999.72	0.16	\$1574.06
		AGL SA	TORRB3	Energy	\$9999.72	0.16	\$1574.06
		AGL SA	TORRB4	Energy	\$9999.72	0.16	\$1574.06
16:25	\$9999.72	AGL SA	TORRA1	Energy	\$9999.72	0.09	\$925.87
		AGL SA	TORRA2	Energy	\$9999.72	0.09	\$925.87
		AGL SA	TORRA3	Energy	\$9999.72	0.09	\$925.87
		AGL SA	TORRA4	Energy	\$9999.72	0.09	\$925.87
		AGL SA	TORRB1	Energy	\$9999.72	0.16	\$1574.06
		AGL SA	TORRB2	Energy	\$9999.72	0.16	\$1574.06
		AGL SA	TORRB3	Energy	\$9999.72	0.16	\$1574.06
		AGL SA	TORRB4	Energy	\$9999.72	0.16	\$1574.06
16:30	\$9999.72	AGL SA	TORRA1	Energy	\$9999.72	0.09	\$925.87
		AGL SA	TORRA2	Energy	\$9999.72	0.09	\$925.87
		AGL SA	TORRA3	Energy	\$9999.72	0.09	\$925.87
		AGL SA	TORRA4	Energy	\$9999.72	0.09	\$925.87
		AGL SA	TORRB1	Energy	\$9999.72	0.16	\$1574.06
		AGL SA	TORRB2	Energy	\$9999.72	0.16	\$1574.06
		AGL SA	TORRB3	Energy	\$9999.72	0.16	\$1574.06
		AGL SA	TORRB4	Energy	\$9999.72	0.16	\$1574.06
Spot price		\$ 10 000/MWh					

Wednesday 13 March – South Australia – 5 pm

Time	Dispatch price	Participant	Unit	Service	Offer price	Marginal change	Contribution
16:35	\$9999.72	AGL SA	TORRA1	Energy	\$9999.72	0.09	\$925.87
		AGL SA	TORRA2	Energy	\$9999.72	0.09	\$925.87
		AGL SA	TORRA3	Energy	\$9999.72	0.09	\$925.87
		AGL SA	TORRA4	Energy	\$9999.72	0.09	\$925.87
		AGL SA	TORRB1	Energy	\$9999.72	0.16	\$1574.06
		AGL SA	TORRB2	Energy	\$9999.72	0.16	\$1574.06
		AGL SA	TORRB3	Energy	\$9999.72	0.16	\$1574.06
		AGL SA	TORRB4	Energy	\$9999.72	0.16	\$1574.06
16:40	\$9999.72	AGL SA	TORRA1	Energy	\$9999.72	0.09	\$925.87
		AGL SA	TORRA2	Energy	\$9999.72	0.09	\$925.87
		AGL SA	TORRA3	Energy	\$9999.72	0.09	\$925.87
		AGL SA	TORRA4	Energy	\$9999.72	0.09	\$925.87
		AGL SA	TORRB1	Energy	\$9999.72	0.16	\$1574.06
		AGL SA	TORRB2	Energy	\$9999.72	0.16	\$1574.06
		AGL SA	TORRB3	Energy	\$9999.72	0.16	\$1574.06
		AGL SA	TORRB4	Energy	\$9999.72	0.16	\$1574.06
16:45	\$9999.72	AGL SA	TORRA1	Energy	\$9999.72	0.09	\$925.87
		AGL SA	TORRA2	Energy	\$9999.72	0.09	\$925.87
		AGL SA	TORRA3	Energy	\$9999.72	0.09	\$925.87
		AGL SA	TORRA4	Energy	\$9999.72	0.09	\$925.87
		AGL SA	TORRB1	Energy	\$9999.72	0.16	\$1574.06
		AGL SA	TORRB2	Energy	\$9999.72	0.16	\$1574.06
		AGL SA	TORRB3	Energy	\$9999.72	0.16	\$1574.06
		AGL SA	TORRB4	Energy	\$9999.72	0.16	\$1574.06
16:50	\$9999.72	AGL SA	TORRA1	Energy	\$9999.72	0.09	\$925.87
		AGL SA	TORRA2	Energy	\$9999.72	0.09	\$925.87
		AGL SA	TORRA3	Energy	\$9999.72	0.09	\$925.87
		AGL SA	TORRA4	Energy	\$9999.72	0.09	\$925.87
		AGL SA	TORRB1	Energy	\$9999.72	0.16	\$1574.06
		AGL SA	TORRB2	Energy	\$9999.72	0.16	\$1574.06
		AGL SA	TORRB3	Energy	\$9999.72	0.16	\$1574.06
		AGL SA	TORRB4	Energy	\$9999.72	0.16	\$1574.06
16:55	\$9999.72	AGL SA	TORRA1	Energy	\$9999.72	0.09	\$925.87
		AGL SA	TORRA2	Energy	\$9999.72	0.09	\$925.87
		AGL SA	TORRA3	Energy	\$9999.72	0.09	\$925.87
		AGL SA	TORRA4	Energy	\$9999.72	0.09	\$925.87
		AGL SA	TORRB1	Energy	\$9999.72	0.16	\$1574.06
		AGL SA	TORRB2	Energy	\$9999.72	0.16	\$1574.06
		AGL SA	TORRB3	Energy	\$9999.72	0.16	\$1574.06
		AGL SA	TORRB4	Energy	\$9999.72	0.16	\$1574.06
17:00	\$9999.72	AGL SA	TORRA1	Energy	\$9999.72	0.09	\$925.87
		AGL SA	TORRA2	Energy	\$9999.72	0.09	\$925.87
		AGL SA	TORRA3	Energy	\$9999.72	0.09	\$925.87
		AGL SA	TORRA4	Energy	\$9999.72	0.09	\$925.87
		AGL SA	TORRB1	Energy	\$9999.72	0.16	\$1574.06
		AGL SA	TORRB2	Energy	\$9999.72	0.16	\$1574.06
		AGL SA	TORRB3	Energy	\$9999.72	0.16	\$1574.06
		AGL SA	TORRB4	Energy	\$9999.72	0.16	\$1574.06
Spot price		\$ 10 000/MWh					

Wednesday 13 March – South Australia – 5.30 pm

Time	Dispatch price	Participant	Unit	Service	Offer price	Marginal change	Contribution
17:05	\$9999.72	AGL SA	TORRA1	Energy	\$9999.72	0.09	\$925.87
		AGL SA	TORRA2	Energy	\$9999.72	0.09	\$925.87
		AGL SA	TORRA3	Energy	\$9999.72	0.09	\$925.87
		AGL SA	TORRA4	Energy	\$9999.72	0.09	\$925.87
		AGL SA	TORRB1	Energy	\$9999.72	0.16	\$1574.06
		AGL SA	TORRB2	Energy	\$9999.72	0.16	\$1574.06
		AGL SA	TORRB3	Energy	\$9999.72	0.16	\$1574.06
		AGL SA	TORRB4	Energy	\$9999.72	0.16	\$1574.06
17:10	\$9999.72	AGL SA	TORRA1	Energy	\$9999.72	0.09	\$925.87
		AGL SA	TORRA2	Energy	\$9999.72	0.09	\$925.87
		AGL SA	TORRA3	Energy	\$9999.72	0.09	\$925.87
		AGL SA	TORRA4	Energy	\$9999.72	0.09	\$925.87
		AGL SA	TORRB1	Energy	\$9999.72	0.16	\$1574.06
		AGL SA	TORRB2	Energy	\$9999.72	0.16	\$1574.06
		AGL SA	TORRB3	Energy	\$9999.72	0.16	\$1574.06
		AGL SA	TORRB4	Energy	\$9999.72	0.16	\$1574.06
17:15	\$9999.72	AGL SA	TORRA1	Energy	\$9999.72	0.09	\$925.87
		AGL SA	TORRA2	Energy	\$9999.72	0.09	\$925.87
		AGL SA	TORRA3	Energy	\$9999.72	0.09	\$925.87
		AGL SA	TORRA4	Energy	\$9999.72	0.09	\$925.87
		AGL SA	TORRB1	Energy	\$9999.72	0.16	\$1574.06
		AGL SA	TORRB2	Energy	\$9999.72	0.16	\$1574.06
		AGL SA	TORRB3	Energy	\$9999.72	0.16	\$1574.06
		AGL SA	TORRB4	Energy	\$9999.72	0.16	\$1574.06
17:20	\$9999.72	AGL SA	TORRA1	Energy	\$9999.72	0.09	\$925.87
		AGL SA	TORRA2	Energy	\$9999.72	0.09	\$925.87
		AGL SA	TORRA3	Energy	\$9999.72	0.09	\$925.87
		AGL SA	TORRA4	Energy	\$9999.72	0.09	\$925.87
		AGL SA	TORRB1	Energy	\$9999.72	0.16	\$1574.06
		AGL SA	TORRB2	Energy	\$9999.72	0.16	\$1574.06
		AGL SA	TORRB3	Energy	\$9999.72	0.16	\$1574.06
		AGL SA	TORRB4	Energy	\$9999.72	0.16	\$1574.06
17:25	\$9999.72	AGL SA	TORRA1	Energy	\$9999.72	0.09	\$925.87
		AGL SA	TORRA2	Energy	\$9999.72	0.09	\$925.87
		AGL SA	TORRA3	Energy	\$9999.72	0.09	\$925.87
		AGL SA	TORRA4	Energy	\$9999.72	0.09	\$925.87
		AGL SA	TORRB1	Energy	\$9999.72	0.16	\$1574.06
		AGL SA	TORRB2	Energy	\$9999.72	0.16	\$1574.06
		AGL SA	TORRB3	Energy	\$9999.72	0.16	\$1574.06
		AGL SA	TORRB4	Energy	\$9999.72	0.16	\$1574.06
17:30	\$9999.72	AGL SA	TORRA1	Energy	\$9999.72	0.09	\$925.87
		AGL SA	TORRA2	Energy	\$9999.72	0.09	\$925.87
		AGL SA	TORRA3	Energy	\$9999.72	0.09	\$925.87
		AGL SA	TORRA4	Energy	\$9999.72	0.09	\$925.87
		AGL SA	TORRB1	Energy	\$9999.72	0.16	\$1574.06
		AGL SA	TORRB2	Energy	\$9999.72	0.16	\$1574.06
		AGL SA	TORRB3	Energy	\$9999.72	0.16	\$1574.06
		AGL SA	TORRB4	Energy	\$9999.72	0.16	\$1574.06
Spot price		\$ 10 000/MWh					

Monday 17 March – South Australia – 4 pm

Time	Dispatch price	Participant	Unit	Service	Offer price	Marginal change	Contribution
15:35	\$7501.11	AGL SA	TORRB1	Energy	\$7500.72	0.25	\$1875.18
		AGL SA	TORRB2	Energy	\$7500.72	0.25	\$1875.18
		AGL SA	TORRB3	Energy	\$7500.72	0.25	\$1875.18
		AGL SA	TORRB4	Energy	\$7500.72	0.25	\$1875.18
		AGL SA	TORRB1	Raise reg	\$1.60	-0.75	-\$1.20
		AGL SA	TORRB4	Raise reg	\$1.60	-0.25	-\$0.40
		Stanwell	GSTONE3	Raise reg	\$1.99	1.00	\$1.99
		AGL SA	TORRB1	Raise 6 sec	\$0.50	1.00	\$0.50
		AGL SA	TORRB2	Raise 6 sec	\$0.50	-0.50	-\$0.25
		AGL SA	TORRB3	Raise 6 sec	\$0.50	-0.50	-\$0.25
15:40	\$7653.87	LYMMCO	LYA4	Energy	\$7950.49	0.96	\$7653.86
15:45	\$7500.72	AGL SA	TORRB1	Energy	\$7500.72	0.33	\$2500.21
		AGL SA	TORRB2	Energy	\$7500.72	0.33	\$2500.21
		AGL SA	TORRB3	Energy	\$7500.72	0.33	\$2500.21
		LYMMCO	LYA2	Raise 6 sec	\$0.50	1.33	\$0.67
		AGL SA	TORRB1	Raise 6 sec	\$0.50	-0.67	-\$0.33
AGL SA	TORRB2	Raise 6 sec	\$0.50	-0.67	-\$0.33		
15:50	\$7764.70	LYMMCO	LYA4	Energy	\$7950.49	0.98	\$7764.69
15:55	\$7500.72	AGL SA	TORRA1	Energy	\$7500.72	0.11	\$833.40
		AGL SA	TORRA2	Energy	\$7500.72	0.11	\$833.40
		AGL SA	TORRB1	Energy	\$7500.72	0.19	\$1458.44
		AGL SA	TORRB2	Energy	\$7500.72	0.19	\$1458.44
		AGL SA	TORRB3	Energy	\$7500.72	0.19	\$1458.44
		AGL SA	TORRB4	Energy	\$7500.72	0.19	\$1458.44
16:00	\$7500.72	AGL SA	TORRA1	Energy	\$7500.72	0.13	\$937.59
		AGL SA	TORRB1	Energy	\$7500.72	0.22	\$1640.78
		AGL SA	TORRB2	Energy	\$7500.72	0.22	\$1640.78
		AGL SA	TORRB3	Energy	\$7500.72	0.22	\$1640.78
		AGL SA	TORRB4	Energy	\$7500.72	0.22	\$1640.78
Spot price		\$ 7894/MWh					

Monday 17 March – South Australia – 4.30 pm

Time	Dispatch price	Participant	Unit	Service	Offer price	Marginal change	Contribution
16:05	\$9846.09	Snowy Hydro	MURRAY	Energy	\$9999.00	1.10	\$11007.00
16:10	\$7517.95	LYMMCO	LYA2	Energy	\$7650.39	0.98	\$7517.89
		AGL SA	TORRB4	Raise reg	\$1.60	-0.13	-\$0.21
		Stanwell	GSTONE1	Raise reg	\$1.99	0.13	\$0.26
		LYMMCO	LYA2	Raise 60 sec	\$0.40	-0.42	-\$0.17
		LYMMCO	LYA4	Raise 60 sec	\$0.40	0.42	\$0.17
		LYMMCO	LYA2	Raise 6 sec	\$0.50	-0.28	-\$0.14
		AGL SA	TORRB4	Raise 6 sec	\$0.50	0.28	\$0.14
16:15	\$7500.72	AGL SA	TORRA1	Energy	\$7500.72	0.11	\$833.40
		AGL SA	TORRA2	Energy	\$7500.72	0.11	\$833.40
		AGL SA	TORRB1	Energy	\$7500.72	0.19	\$1458.44
		AGL SA	TORRB2	Energy	\$7500.72	0.19	\$1458.44
		AGL SA	TORRB3	Energy	\$7500.72	0.19	\$1458.44
		AGL SA	TORRB4	Energy	\$7500.72	0.19	\$1458.44
16:20	\$7500.72	AGL SA	TORRA1	Energy	\$7500.72	0.11	\$833.40
		AGL SA	TORRA2	Energy	\$7500.72	0.11	\$833.40
		AGL SA	TORRB1	Energy	\$7500.72	0.19	\$1458.44
		AGL SA	TORRB2	Energy	\$7500.72	0.19	\$1458.44
		AGL SA	TORRB3	Energy	\$7500.72	0.19	\$1458.44
		AGL SA	TORRB4	Energy	\$7500.72	0.19	\$1458.44
16:25	\$7500.72	AGL SA	TORRA1	Energy	\$7500.72	0.11	\$833.40
		AGL SA	TORRA2	Energy	\$7500.72	0.11	\$833.40
		AGL SA	TORRB1	Energy	\$7500.72	0.19	\$1458.44
		AGL SA	TORRB2	Energy	\$7500.72	0.19	\$1458.44
		AGL SA	TORRB3	Energy	\$7500.72	0.19	\$1458.44
		AGL SA	TORRB4	Energy	\$7500.72	0.19	\$1458.44
16:30	\$7500.72	AGL SA	TORRA1	Energy	\$7500.72	0.11	\$833.40
		AGL SA	TORRA2	Energy	\$7500.72	0.11	\$833.40
		AGL SA	TORRB1	Energy	\$7500.72	0.19	\$1458.44
		AGL SA	TORRB2	Energy	\$7500.72	0.19	\$1458.44
		AGL SA	TORRB3	Energy	\$7500.72	0.19	\$1458.44
		AGL SA	TORRB4	Energy	\$7500.72	0.19	\$1458.44
Spot price		\$ 10 000/MWh					

Appendix E – Impact of administered price cap

Figure E1 shows the spot prices that were affected by administered pricing during the administered pricing period. On 11 occasions the South Australia price was reduced by the administered price cap. On eight occasions the Victoria price was reduced as a result of price scaling across the Victoria to South Australia interconnector, which is required in order to avoid negative inter-regional settlement residues. The price in the Snowy region was also scaled down on five occasions, whilst the New South Wales and Queensland prices were affected for one trading interval.

Figure E1: trading intervals affected by administered pricing

Trading interval	Region	Spot price	Original price	Administered
17/3/08 5:30 pm	SA	100	106.18	yes
17/3/08 5:30 pm	Snowy	90.48	92	scaled
17/3/08 5:30 pm	Vic	98.97	102.57	scaled
17/3/08 6:00 pm	SA	100	128.26	yes
17/3/08 6:00 pm	Snowy	93.34	109.02	scaled
17/3/08 6:00 pm	Vic	98.48	122.88	scaled
17/3/08 6:30 pm	SA	100	119.15	yes
17/3/08 6:30 pm	Snowy	90.92	96.57	scaled
17/3/08 6:30 pm	Vic	96.67	110.64	scaled
17/3/08 7:00 pm	SA	100	123.38	yes
17/3/08 7:00 pm	Snowy	94.1	105.86	scaled
17/3/08 7:00 pm	Vic	99.47	119.75	scaled
17/3/08 7:30 pm	NSW	91.44	96.17	scaled
17/3/08 7:30 pm	Qld	81.69	83.46	scaled
17/3/08 7:30 pm	SA	100	137.04	yes
17/3/08 7:30 pm	Snowy	89.7	104.55	scaled
17/3/08 7:30 pm	VIC	98.87	132.81	scaled
17/3/08 8:00 pm	SA	99.72	109.06	yes
17/3/08 8:00 pm	Vic	96.28	103.66	scaled
17/3/08 11:30 pm	SA	45.62	46.58	yes
17/3/08 11:30 pm	Vic	43.57	44.34	scaled
18/3/08 12:00 am	SA	41.19	42.14	yes
18/3/08 12:00 am	Vic	37.47	38.09	scaled
18/3/08 6:00 am	SA	43.42	45.66	yes
18/3/08 6:30 am	SA	45.79	49.61	yes
18/3/08 7:00 am	SA	50	55.72	yes