

# Spot prices greater than \$5000/MWh



AUSTRALIAN ENERGY  
REGULATOR

South Australia: 4 & 10 January 2008  
18 & 19 February 2008

## Introduction

Under clause 3.13.7 (d) of the Rules the AER is required to publish a report covering the circumstances in which the spot price exceeded \$5000/MWh. That report should:

- describe significant factors contributing to the spot price exceeding \$5000/MWh, including withdrawal of generation capacity and network availability;
- assess whether rebidding pursuant to clause 3.8.22 contributed to the spot price exceeding \$5000/MWh;
- identify the marginal scheduled generating units; and
- identify all units with offers for the trading interval equal to or greater than \$5000/MWh and compare these dispatch offers to relevant dispatch offers in previous trading intervals.

This report examines the factors that can contribute to the spot price exceeding \$5000/MWh including; changes in demand (compared to that forecast by NEMMCO); generator offers and rebidding (including changes to generation capacity); and changes to network availability.

## Summary

Over four days in January and February the spot price in South Australia exceeded \$5000/MWh for 25 trading intervals.

On 4 January, temperatures reached 38 degrees in Adelaide driving demand to very high levels. Almost 90 per cent of capacity at AGL's Torrens Island power station was priced at close to the price cap of \$10 000/MWh for the day, setting the price for the 3 pm to 5 pm trading intervals inclusive.

On 10 January, temperatures reached 41 degrees leading to a record demand in South Australia. From 2.30 pm to 5.30 pm, AGL offered around 80 per cent of Torrens Island's capacity above \$9000/MWh, the majority at close to the price cap, and set the price at around \$10 000/MWh. For the remainder of the day most capacity was offered at less than \$500/MWh.

The rolling seven day cumulative price in South Australia reached \$138 000 on 11 January, just short of the threshold of \$150 000 which would see administered pricing applied to the market<sup>1</sup>.

On 18 February, temperatures reached 37 degrees with demand peaking just short of the record set on 10 January. From 12.30 pm to 6.30 pm, AGL offered around 80 per cent of Torrens Island's capacity at close to the price cap, setting the price at around \$10 000/MWh. The cumulative price increased from \$15 000 to \$134 000 over this period.

---

<sup>1</sup> The cumulative price threshold is defined in Clause 3.14.1 (c) of the rules as \$150 000. Clause 3.14.2 c (1) states that when the sum of the spot prices for the previous 336 trading intervals – prices over the previous week – exceeds the cumulative price threshold, administered pricing is to apply. Administered pricing caps the maximum price to \$100/MWh during peak period and \$50/MWh at other times.

On 19 February, temperatures reached 38 degrees with demand again at near record levels. On two occasions during the day, AGL rebid up to 75 per cent of capacity from prices of less than \$200/MWh to \$9000/MWh immediately prior to dispatch. These rebids saw the price in South Australia increase to \$1573/MWh at 2 pm and \$6087/MWh at 6 pm. The cumulative price increased to \$143 000.

Reductions in transfer limits on the Heywood inter-connector contributed to high prices. In November and again in December, the South Australian transmission network service provider (Electranet) reduced the limits. The two changes reduced maximum imports into South Australia by around 100 MW. The reductions limited the supply of lower price electricity from Victoria.

On each day except 19 February, the actual prices were very close to those forecast a day ahead. The high prices triggered a limited generation and demand response but not enough to affect prices.

### **Actual and forecast demand**

On 4 January demand in South Australia peaked at 2564 MW at 4 pm. Demand remained above 2500 MW between 3pm and 5.30 pm corresponding with the period when prices were over \$5000/MWh. Demand was close to forecasts 4 and 12 hours ahead of dispatch.

On 10 January demand reached 2916 MW at 4.30 pm, around 1.5 per cent higher than the previous demand record of 2872 MW. Demand was above 2500 MW between 11.30 am and 8.30 pm. For most of this period prices were over \$5000/MWh. Demand was close to forecasts 4 and 12 hours ahead of dispatch.

On 18 February demand reached 2897 MW at 4.30 pm. Demand was above 2500 MW between 11.30 am and 8 pm. As on January 4 and January 10, high prices occurred when demand was above 2500 MW. Demand was close to forecasts 4 and 12 hours ahead of dispatch. At around 3 pm on Friday 15 February and again on Sunday 17 February, NEMMCO forecast low reserves for 18 February. A further notification at around 6 pm on 17 February stated that there were continuing shortages and:

*“Following market responses to the Market Notice 20546 ... NEMMCO has no further generation options available to reduce the reserve deficiency. NEMMCO will not be intervening in the market at this point in time.”*

On 19 February demand reached 2838 MW at 5 pm. Demand was above 2500 MW between 12.30 pm and 6.30 pm and was typically close to forecast on the day. However, a forecast cool change for the evening did not eventuate until the following day. This led around 200 MW higher than forecast demand later in the day.

Demand in South Australia did not exceed 2500 MW between 10 January and 18 February and prices were relatively low.

### **Changes to network availability**

During the high demand periods in January and February the limits for imports across the Murraylink and Heywood interconnectors into South Australia were significantly lower than historical levels, lower than forecast, and lower than the amount sold to market participants through the settlement residue auction process.

Electranet, the South Australian transmission network service provider, revised down the import limits on Heywood in November and again in December. The two revisions reduced maximum flows from around 460 MW to around 360 MW.

The changes followed reductions in import limits from around 500 MW to 460 MW by the Victorian transmission network service provider (SPAusnet) in 2003. When combined

Electranet's and SPAusnet's revisions have reduced import limits into South Australia by around 140 MW, or 28 per cent.

The AER is investigating the causes of the reductions to import limits on Heywood.

The import limit for Murraylink was generally lower than forecast immediately prior to dispatch by around 100 MW. The average combined Heywood and Murraylink limit during the high priced periods was 395 MW compared to the 700 units sold through the settlement residue auction process.

### **Generator offers and rebidding**

On 4 January, 10 January and 18 February a significant amount of capacity was priced above \$5000/MWh by AGL's Torrens Island power station<sup>2</sup> at the time of the high prices. On each day, capacity was largely presented in two tiers to the market. Capacity up to the nominal minimum operating levels of these units was priced at the price floor of -\$1000/MWh, with the remainder priced at close to the price cap of \$10 000/MWh.

On 4 January, two A units and three B units at Torrens Island were online, a total of 840 MW, with 180 MW offered at the price floor and 660 MW priced at the price cap. The remaining two A units and one B unit (a total of 440 MW) were not offered into the market during the high price periods. One of these units shut down earlier than planned, so was only offered between 9 am and 2.35 pm. The first dispatch interval that the unit was not offered the five-minute dispatch price increased from \$376/MWh to \$9950/MWh after unit A3 was shut down. The reason given for the shut down was "Forecast price change::decrease in prices."

On 10 January, three A units and four B units at Torrens Island were online (a total of 1160 MW) with 270 MW offered at the price floor, 890 MW priced above \$5000/MWh, and 830 MW priced at around the price cap. A rebid at 3.54 pm the previous day saw unit B4 committed<sup>3</sup> and unit A4 de-committed. A rebid at 9.53 am on 10 January saw unit A4 re-committed. The rebid reasons given were "Plant testing commissioning:B4 returned to service" and "Demand ahead of forecast, additional unit commitment".

On 18 February, two A units and four B units at Torrens Island were online (a total of 1040 MW), with 220 MW offered at the price floor and 820 MW priced above \$9000/MWh. Unit A3 was committed through a rebid the previous day. The reason given was "Market notice: market notice LOR". At 11.44 am on 18 February, 600 MW was shifted from prices around \$9000/MWh into higher prices. The reason given was "Portfolio optimisation:Price/Volume trade off".

On 19 February, three A units and four B units at Torrens Island were online (a total of 1150 MW). For most of the day, this capacity was priced below \$500/MWh. Two of the A units and unit B1 were committed the previous day. The reasons given were "Plant limitations::Adj to unit de-commit(outage canc)" and "Portfolio optimisation::change to unit commitment". At 1.45 pm on 19 February a total of 600 MW across units A1, A3 and all four B units were rebid from prices below \$150/MWh to above \$8500/MWh for the 2 pm and 2.30 pm trading intervals. The rebid reasons given were "Portfolio Optimisation:Price/Volume Trade Off". At 5.30 pm a total of 820 MW across units A3, A4 and the four B units were rebid from prices less than \$150/MWh to above \$8500/MWh for the 6 pm trading interval. The reason given was "Portfolio Optimisation:Price/Volume Trade

---

<sup>2</sup> Torrens Island power station consists of four 120 MW units in A station and four 200 MW units in B station.

<sup>3</sup> A bid to commit a unit changes the availability of a unit to make it available for dispatch, whilst de-committing a unit makes the unit no longer available.

Off.” Some of these rebids had the effect of increasing prices in South Australia, while others reduced prices.

The 50 MW Angaston generators, owned by Infratil, had all capacity priced at close to the price cap on 4 January. On 10 January, this capacity was priced at \$250/MWh until 12.30 pm. The unit received a start-up direction from the market systems at 12.20 pm, but a rebid at 12.28 pm reduced the availability of the units to zero for the next hour. The rebid reason given was “Portfolio opt network constraint S>>V\_NIL\_BRPA\_MNWT”<sup>4</sup>. By 1.35 pm, the units were again offered to the market, with all capacity now priced at close to the price cap.

On 18 February, all of the capacity of the Angaston generators was offered at close to the price cap. On 19 February, the capacity was priced for most of the day at around \$250/MWh. One rebid was made, at 5.25 pm, shifting the capacity to the price cap for the 6 pm trading interval. The reason given was “Portfolio optimisation::changed energy band”.

International Power’s Synergen portfolio presented 87 MW, or around a third of its capacity at prices above \$5000/MWh for the 6 pm trading interval on 19 February. This capacity was offered for plant that was offline. Rebids shifted 177 MW of capacity at Dry Creek and Snuggery into low prices in response to the high price.

The National Electricity Rules (NER) requires all rebids to be made in good faith. The AER is investigating these rebids further.

Figures 5a, 5b, 5c and 5d shows for all participants in South Australia the capacity that was presented at prices above \$5000/MWh and the amount of capacity not presented to the market when compared to the summer ratings of the plant<sup>5</sup>. It also shows a combined total of high priced or unavailable capacity as a percentage of the summer rating.

**Figure 5a: Capacity offered above \$5000/MWh in South Australia on Friday 4 January between 3 pm and 5 pm.**

<b>Participant</b>	<b>Summer rating</b>	<b>Capacity priced above \$5000/MWh</b>	<b>Capacity not presented</b>	<b>Combined total as % of summer rating**</b>
AGL	1260	660	420	86%
Flinders Power	947	0	62	7%
Infratil	49	40	9	100%
International Power (Pelican Point)	450	0	-7*	-1%
International Power (Synergen)	269	0	-29*	-11%
Origin Energy	146	0	-1*	-1%
TRUEnergy	151	10	28	25%
<b>TOTAL</b>	<b>3272</b>	<b>710</b>	<b>482</b>	<b>36%</b>

\* A negative value indicates that more capacity was presented across the portfolio than the summer rating on the plant.

\*\* This column shows capacity priced above \$5000/MWh and capacity not presented as a proportion of each generator’s summer rated capacity.

<sup>4</sup> Constraint S>>V\_NIL\_BRPA\_MNWT constrains on generation at Angaston and constrains off other generation and was first entered into the market systems the previous day (9 January 2008).

<sup>5</sup> Summer ratings are sourced from NEMMCO’s 2007 SOO.

*Figure 5b: Capacity offered above \$5000/MWh in South Australia on Friday 10 January between 2.30 pm and 5.30 pm.*

<b>Participant</b>	<b>Summer rating</b>	<b>Capacity priced above \$5000/MWh</b>	<b>Capacity not presented</b>	<b>Combined total as % of summer rating</b>
AGL	1260	890	100	79%
Flinders Power	947	0	52	6%
Infratil	49	49	0	100%
International Power (Pelican Point)	450	0	-10	-2%
International Power (Synergen)	269	3	-13	-4%
Origin Energy	146	0	-4	-3%
TRUenergy	151	0	24	16%
<b>TOTAL</b>	<b>3272</b>	<b>942</b>	<b>149</b>	<b>33%</b>

*Figure 5c: Capacity offered above \$5000/MWh in South Australia on Monday 18 February between 12.30 pm and 6.30 pm.*

<b>Participant</b>	<b>Summer rating</b>	<b>Capacity priced above \$5000/MWh</b>	<b>Capacity not presented</b>	<b>Combined total as % of summer rating</b>
AGL	1260	820	220	83%
Flinders Power	947	0	49	5%
Infratil	49	49	0	100%
International Power (Pelican Point)	450	0	-12	-3%
International Power (Synergen)	269	3	19	8%
Origin Energy	146	0	-6	-4%
TRUenergy	151	0	11	7%
<b>TOTAL</b>	<b>3272</b>	<b>872</b>	<b>281</b>	<b>35%</b>

*Figure 5d: Capacity offered above \$5000/MWh in South Australia on Tuesday 19 February at 6 pm.*

<b>Participant</b>	<b>Summer rating</b>	<b>Capacity priced above \$5000/MWh</b>	<b>Capacity not presented</b>	<b>Combined total as % of summer rating</b>
AGL	1260	820	119	75%
Flinders Power	947	0	81	9%
Infratil	49	49	0	100%
International Power (Pelican Point)	450	0	-9	-2%
International Power (Synergen)	269	87	2	33%
Origin Energy	146	0	-4	-3%
TRUenergy	151	0	2	2%
<b>TOTAL</b>	<b>3272</b>	<b>956</b>	<b>192</b>	<b>35%</b>

The closing bids for all participants in South Australia with capacity priced at or above \$5000/MWh during the high priced periods are presented in **Appendix A**.

The generators involved in setting the spot price exceeding \$5000/MWh on 4 and 10 January and 18 and 19 February is detailed in **Appendix B**.

## **Assessment**

In January and February, extreme temperatures in South Australia saw high levels of demand in the region on a number of days, including a record demand on 10 January. AGL offered between 75 per cent and 86 per cent (or up to 890 MW) of the capacity at Torrens Island power station at prices above \$5000/MWh on those days, with the majority of this above \$9000/MWh. The high prices on each day were set by the offer prices for Torrens Island of \$9950/MWh and \$10 000/MWh. Imports from Victoria across the Heywood and Murraylink interconnectors were significantly lower than historic levels, with a combined limit of less than 400 MW, compared to maximum capability of close to 700 MW.

As noted above the AER is investigating rebids further to assess their compliance with the good faith provisions in the National Electricity Rules.

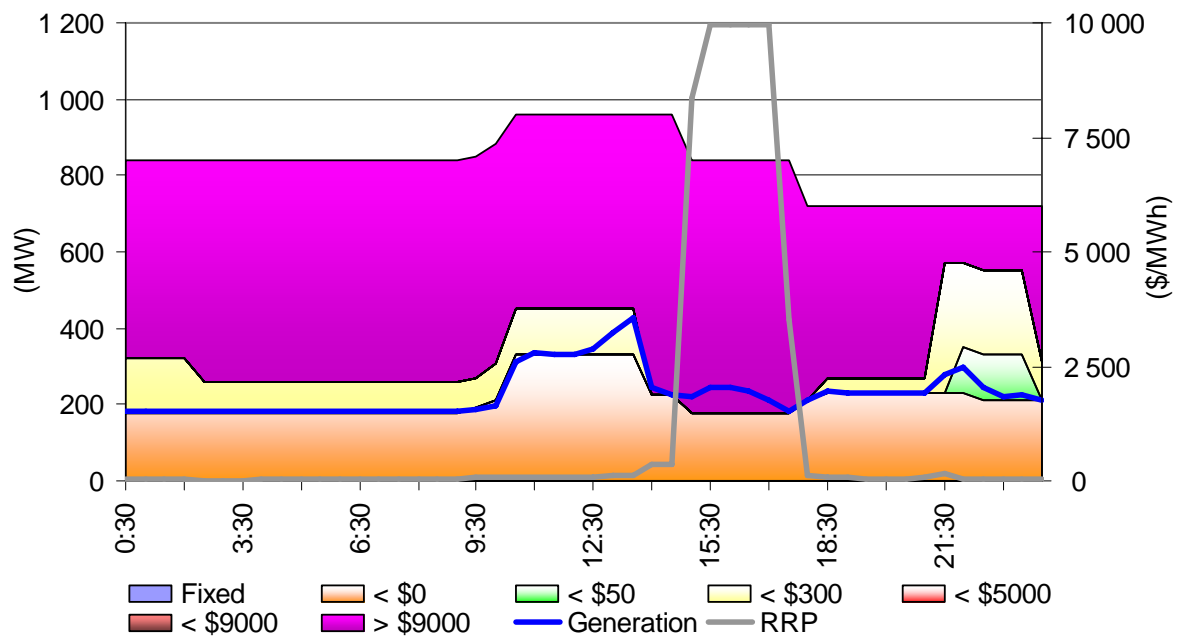
**Australian Energy Regulator**

**March 2008**

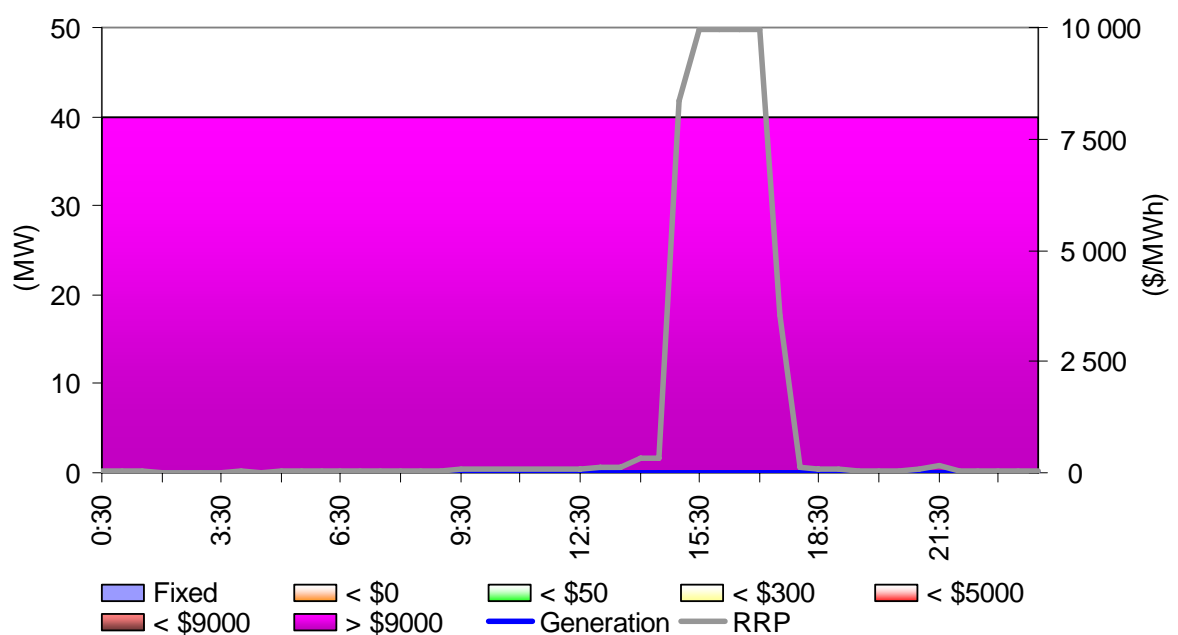
## Appendix A – Closing bids

Figures A1 – A9 highlight the half hour closing bids for participants in South Australia with significant capacity priced at or above \$5000/MWh during the trading intervals in which the spot price exceeded \$5000/MWh. It also shows the generation output of that participant and the spot price.

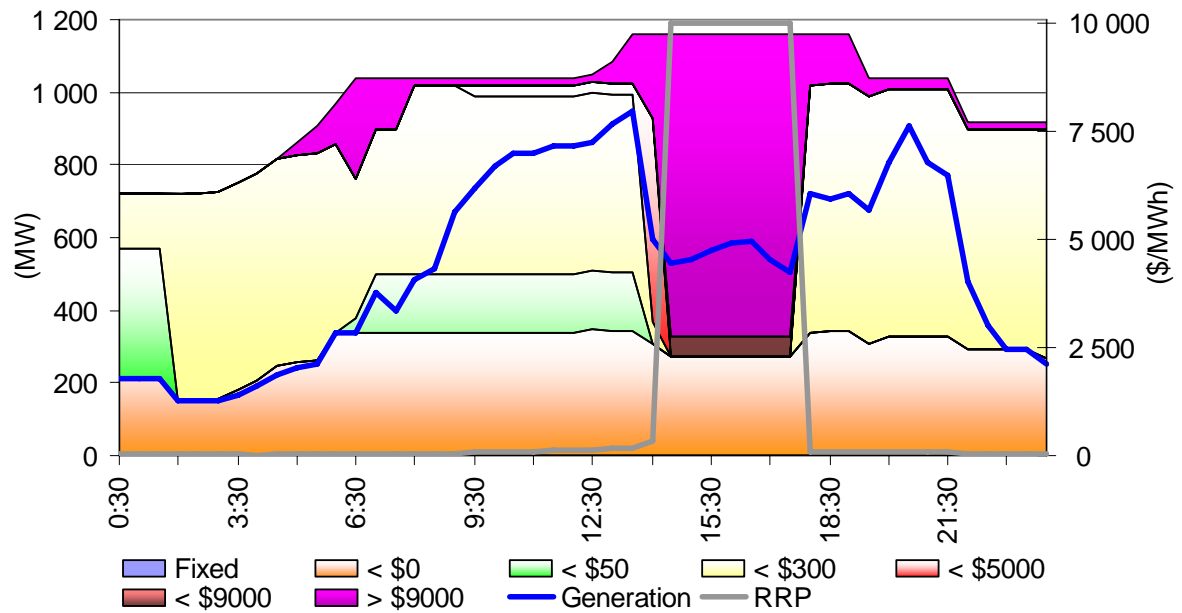
**Figure A1: Torrens Island closing bid prices, dispatch and spot price on 4 January**



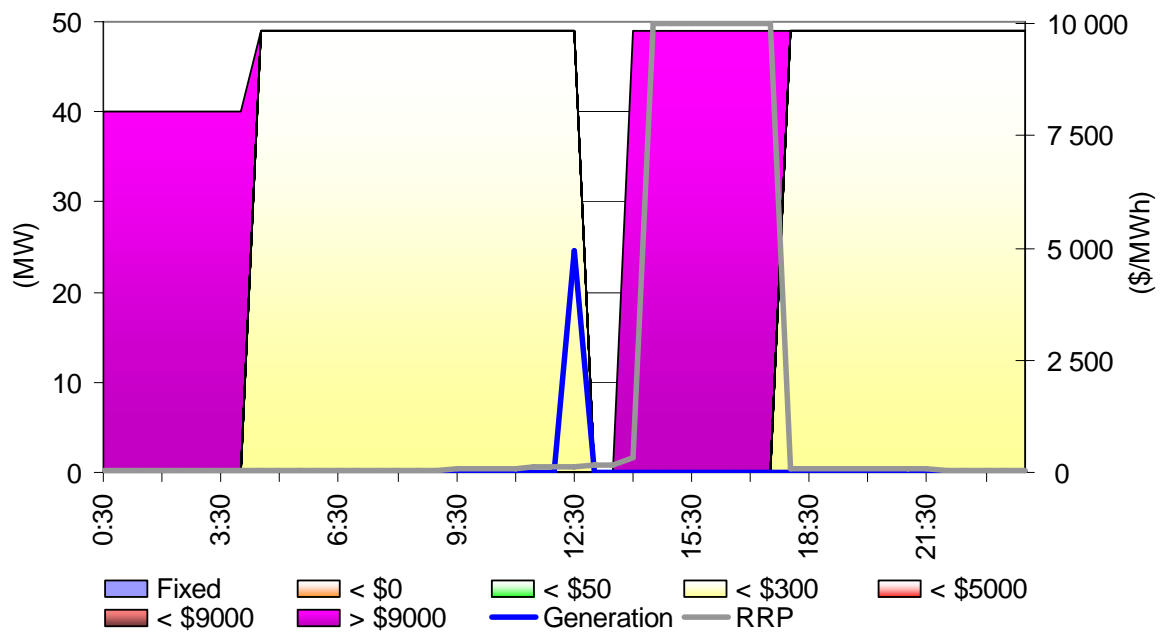
**Figure A2: Angaston closing bid prices, dispatch and spot price on 4 January**



**Figure A3: Torrens Island closing bid prices, dispatch and spot price on 10 January**

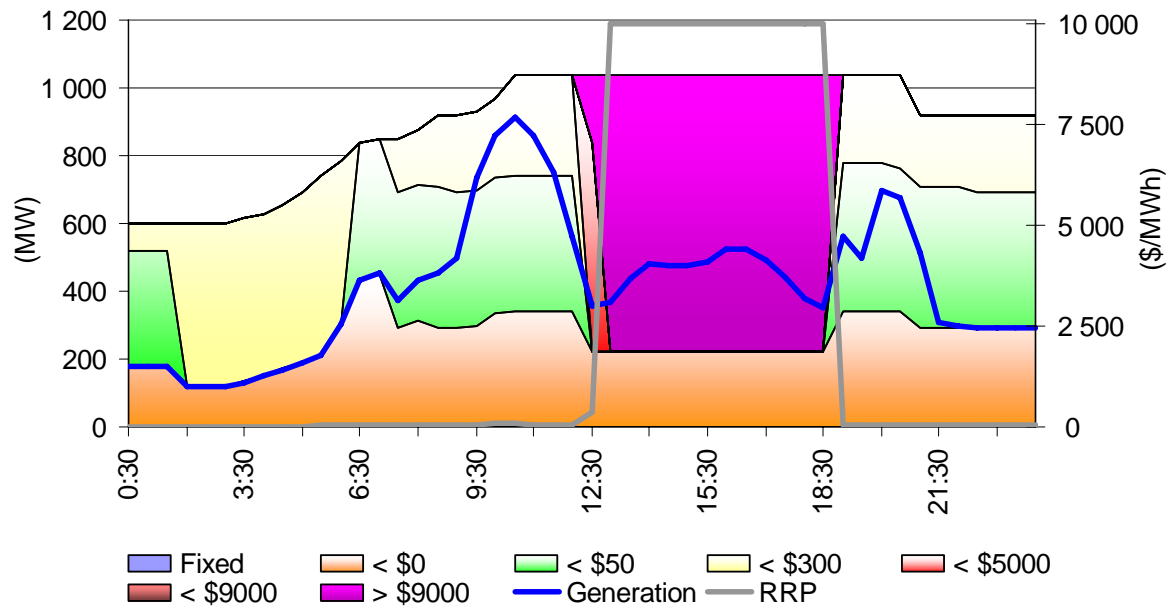


**Figure A4: Angaston closing bid prices, dispatch and spot price on 10 January**

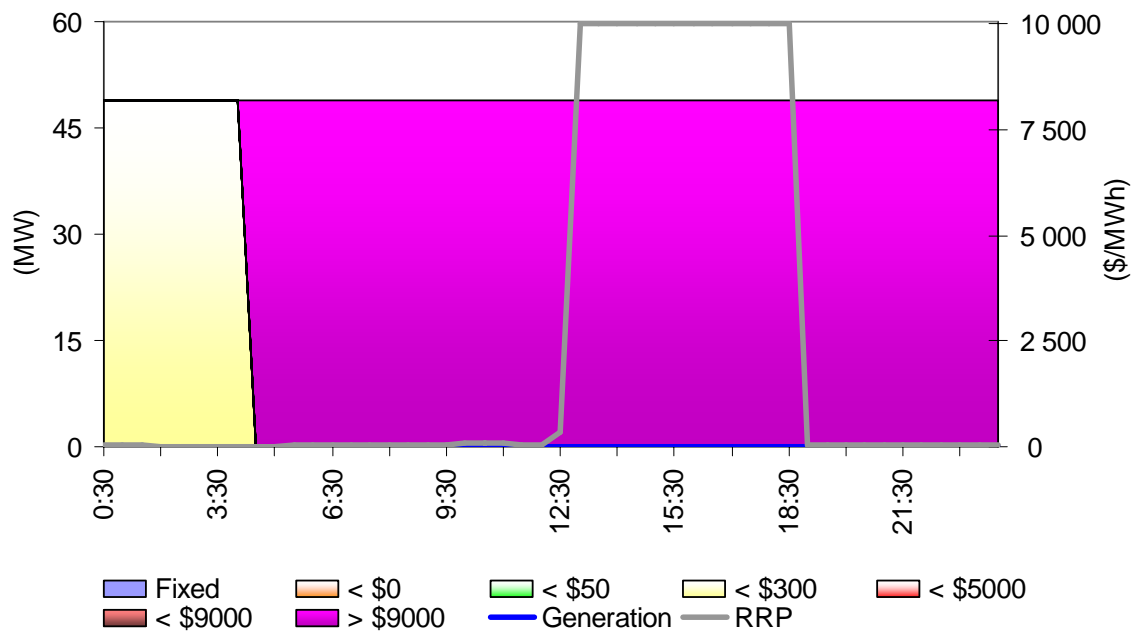




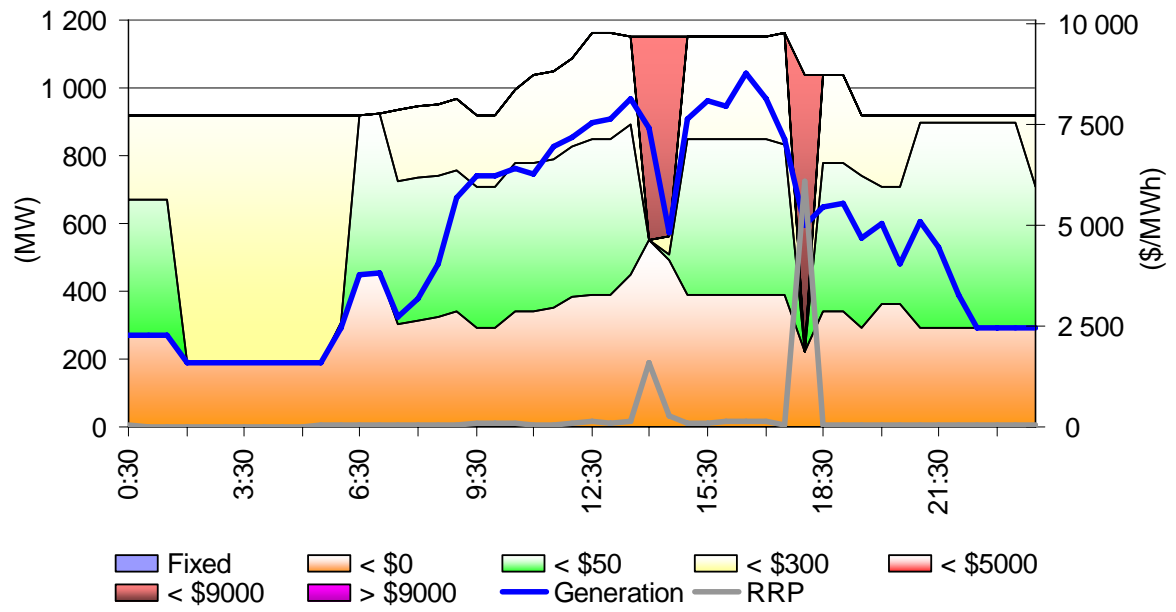
**Figure A5: Torrens Island closing bid prices, dispatch and spot price on 18 February**



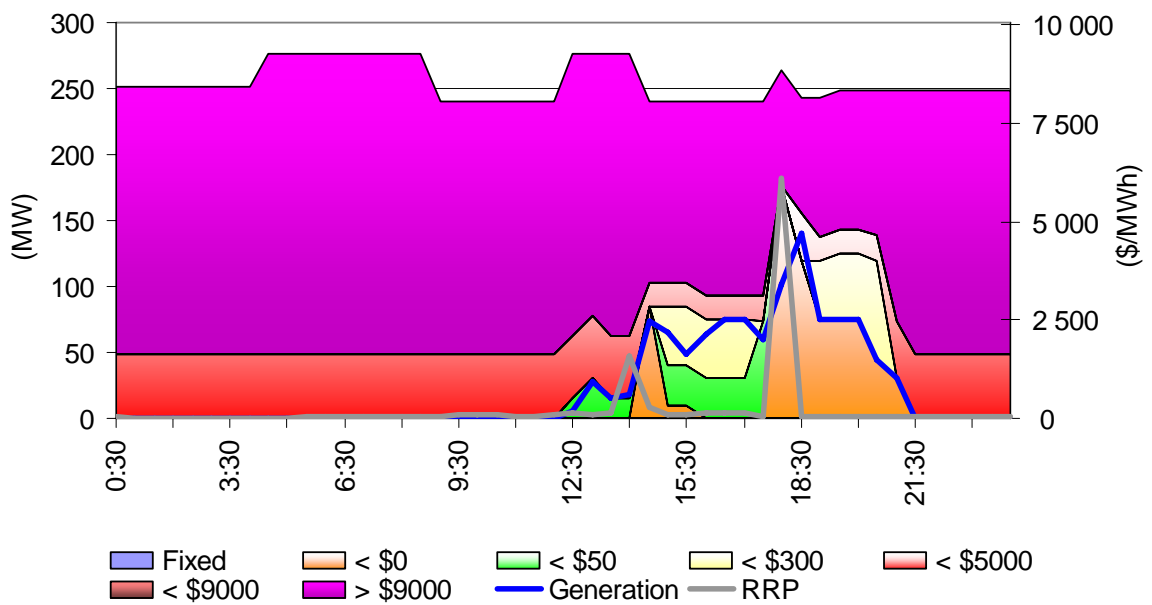
**Figure A6: Angaston closing bid prices, dispatch and spot price on 18 February**



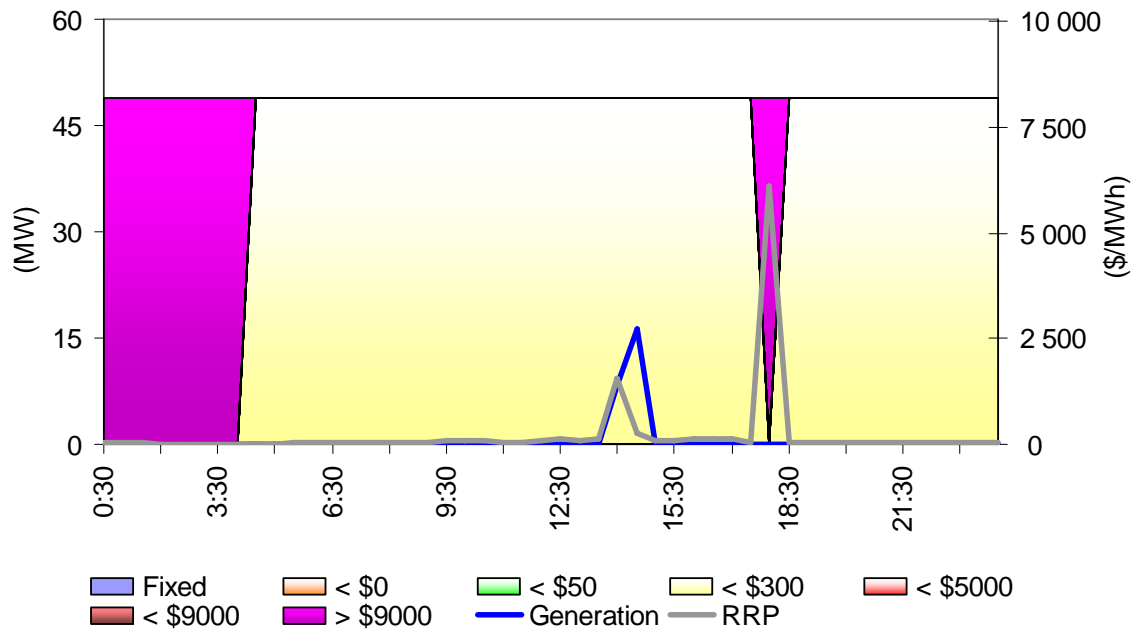
**Figure A7: Torrens Island closing bid prices, dispatch and spot price on 19 February**



**Figure A8: International Power Synergen closing bid prices, dispatch and spot price on 19 February**



**Figure A9: Angaston closing bid prices, dispatch and spot price on 19 February**



## Appendix B – Price setters for the 4 and 10 January and 18 and 19 February 2008

The following tables identify the trading intervals in which the spot price exceeded \$5000/MWh. Each five minute dispatch interval price and the generating units involved in setting the energy price, as published in the market systems are shown. This information is published by NEMMCO<sup>6</sup>. Also shown is the energy or ancillary service offer price involved in determining the dispatch price together with the quantity of that service and the contribution to the total energy price. The 30-minute spot price is the time weighted average of the six dispatch interval prices.

### Friday 4 January – South Australia - 3 pm

Time	Dispatch price	Participant	Unit	Service	Offer price	Marginal change	Contribution	
14:35	\$376.49	Snowy Hydro	MURRAY	Energy	\$300.00	1.17	\$352.16	
		Snowy Hydro	UPPTUMUT	Energy	\$91.38	0.27	\$24.33	
14:40	\$9,949.45	Snowy Hydro	MURRAY	Raise 6 sec	\$2.00	-0.83	-\$1.67	
		AGL SA	TORRB1	Energy	\$9,950.70	1.00	\$9,950.70	
		AGL SA	TORRB1	Raise 6 sec	\$0.50	0.83	\$0.42	
14:45	\$9,949.51	AGL SA	TORRB2	Energy	\$9,950.71	1.00	\$9,950.71	
		AGL SA	TORRB2	Raise 6 sec	\$0.50	0.83	\$0.42	
		TRUenergy						
		Yallourn	YWPS1	Raise 6 sec	\$1.94	-0.83	-\$1.62	
14:50	\$9,949.52	AGL SA	TORRB3	Energy	\$9,950.72	1.00	\$9,950.72	
		AGL SA	TORRB3	Raise 6 sec	\$0.50	0.83	\$0.42	
		TRUenergy						
		Yallourn	YWPS1	Raise 6 sec	\$1.94	-0.83	-\$1.62	
14:55	\$9,949.47	CS Energy	CALL_B_2	Raise 6 sec	\$2.00	-0.83	-\$1.67	
		AGL SA	TORRB3	Energy	\$9,950.72	1.00	\$9,950.72	
		AGL SA	TORRB3	Raise 6 sec	\$0.50	0.83	\$0.42	
15:00	\$9,949.47	Snowy Hydro	MURRAY	Raise 6 sec	\$2.00	-0.83	-\$1.67	
		AGL SA	TORRB3	Energy	\$9,950.72	1.00	\$9,950.72	
		AGL SA	TORRB3	Raise 6 sec	\$0.50	0.83	\$0.42	
<b>Spot price</b>	<b>\$ 8354/MWh</b>							

### Friday 4 January – South Australia – 3.30 pm

Time	Dispatch price	Participant	Unit	Service	Offer price	Marginal change	Contribution
15:05	\$9,950.74	AGL SA	TORRA1	Energy	\$9,950.74	1.00	\$9,950.74
15:10	\$9,949.47	Snowy Hydro	MURRAY	Raise 6 sec	\$2.00	-0.83	-\$1.67
		AGL SA	TORRB3	Energy	\$9,950.72	1.00	\$9,950.72
		AGL SA	TORRB3	Raise 6 sec	\$0.50	0.83	\$0.42
15:15	\$9,949.77	Stanwell	GSTONE2	Lower reg	\$1.95	-1.00	-\$1.95
		AGL SA	TORRB3	Energy	\$9,950.72	1.00	\$9,950.72
		AGL SA	TORRB3	Lower reg	\$1.00	1.00	\$1.00
15:20	\$9,950.74	AGL SA	TORRA1	Energy	\$9,950.74	1.00	\$9,950.74
15:25	\$9,950.74	AGL SA	TORRA1	Energy	\$9,950.74	1.00	\$9,950.74
15:30	\$9,950.77	AGL SA	TORRA4	Energy	\$9,950.77	1.00	\$9,950.77
<b>Spot price</b>	<b>\$ 9950/MWh</b>						

<sup>6</sup> NEMMCO first published details on how the price is determined, for every dispatch interval, in June 2004. Documentation of this process can be found at <http://www.nemmco.com.au/dispatchandpricing/140-0036.htm>

**Friday 4 January – South Australia – 4 pm**

<b>Time</b>	<b>Dispatch price</b>	<b>Participant</b>	<b>Unit</b>	<b>Service</b>	<b>Offer price</b>	<b>Marginal change</b>	<b>Contribution</b>
15:35	\$9,950.74	AGL SA	TORRA1	Energy	\$9,950.74	1.00	\$9,950.74
15:40	\$9,949.47	Snowy Hydro	MURRAY	Raise 6 sec	\$2.00	-0.83	-\$1.67
		AGL SA	TORRB3	Energy	\$9,950.72	1.00	\$9,950.72
		AGL SA	TORRB3	Raise 6 sec	\$0.50	0.83	\$0.42
15:45	\$9,949.47	Snowy Hydro	MURRAY	Raise 6 sec	\$2.00	-0.83	-\$1.67
		AGL SA	TORRB3	Energy	\$9,950.72	1.00	\$9,950.72
		AGL SA	TORRB3	Raise 6 sec	\$0.50	0.83	\$0.42
15:50	\$9,950.74	AGL SA	TORRA1	Energy	\$9,950.74	1.00	\$9,950.74
15:55	\$9,950.74	AGL SA	TORRA1	Energy	\$9,950.74	1.00	\$9,950.74
16:00	\$9,950.77	AGL SA	TORRA4	Energy	\$9,950.77	1.00	\$9,950.77
<b>Spot price</b>		<b>\$ 9950/MWh</b>					

**Friday 4 January – South Australia – 4.30 pm**

<b>Time</b>	<b>Dispatch price</b>	<b>Participant</b>	<b>Unit</b>	<b>Service</b>	<b>Offer price</b>	<b>Marginal change</b>	<b>Contribution</b>
16:05	\$9,950.74	AGL SA	TORRA1	Energy	\$9,950.74	1.00	\$9,950.74
16:10	\$9,949.76	Stanwell	GSTONE3	Lower reg	\$1.95	-1.00	-\$1.95
		AGL SA	TORRB2	Energy	\$9,950.71	1.00	\$9,950.71
		AGL SA	TORRB2	Lower reg	\$1.00	1.00	\$1.00
16:15	\$9,950.74	AGL SA	TORRA1	Energy	\$9,950.74	1.00	\$9,950.74
16:20	\$9,949.45	LYMMCO	LYA1	Raise reg	\$0.90	1.25	\$1.13
		LYMMCO	LYA1	Raise 60 sec	\$0.40	-1.25	-\$0.50
		LYMMCO	LYA1	Raise 6 sec	\$0.50	-0.83	-\$0.42
		AGL SA	TORRB1	Raise reg	\$2.50	-1.25	-\$3.13
		AGL SA	TORRB2	Energy	\$9,950.71	1.00	\$9,950.71
		AGL SA	TORRB2	Raise 6 sec	\$0.50	0.83	\$0.42
		TRUenergy Yallourn	YWPS4	Raise 60 sec	\$0.99	1.25	\$1.24
16:25	\$9,949.47	Snowy Hydro	MURRAY	Raise 6 sec	\$2.00	-0.83	-\$1.67
		AGL SA	TORRB3	Energy	\$9,950.72	1.00	\$9,950.72
		AGL SA	TORRB3	Raise 6 sec	\$0.50	0.83	\$0.42
16:30	\$9,949.47	Snowy Hydro	MURRAY	Raise 6 sec	\$2.00	-0.83	-\$1.67
		AGL SA	TORRB3	Energy	\$9,950.72	1.00	\$9,950.72
		AGL SA	TORRB3	Raise 6 sec	\$0.50	0.83	\$0.42
<b>Spot price</b>		<b>\$ 9950/MWh</b>					

**Friday 4 January – South Australia – 5 pm**

<b>Time</b>	<b>Dispatch price</b>	<b>Participant</b>	<b>Unit</b>	<b>Service</b>	<b>Offer price</b>	<b>Marginal change</b>	<b>Contribution</b>	
16:35	\$9,949.19	SECV	PTH01	Raise 6 sec	\$2.33	-0.83	-\$1.94	
		AGL SA	TORRB2	Energy	\$9,950.71	1.00	\$9,950.71	
		AGL SA	TORRB2	Raise 6 sec	\$0.50	0.83	\$0.42	
16:40	\$9,948.62	AGL SA	TORRB1	Energy	\$9,950.70	1.00	\$9,950.70	
		AGL SA	TORRB1	Raise 6 sec	\$0.50	0.83	\$0.42	
		Snowy Hydro	TUMUT3	Raise 6 sec	\$3.00	-0.83	-\$2.50	
16:45	\$9,949.19	SECV	PTH01	Raise 6 sec	\$2.33	-0.83	-\$1.94	
		AGL SA	TORRB2	Energy	\$9,950.71	1.00	\$9,950.71	
		AGL SA	TORRB2	Raise 6 sec	\$0.50	0.83	\$0.42	
16:50	\$9,949.46	CS Energy	CALL_B_2	Raise 6 sec	\$2.00	-0.83	-\$1.67	
		AGL SA	TORRB2	Energy	\$9,950.71	1.00	\$9,950.71	
		AGL SA	TORRB2	Raise 6 sec	\$0.50	0.83	\$0.42	
16:55	\$9,946.29	Stanwell	GSTONE2	Raise reg	\$1.99	-1.00	-\$1.99	
		CS Energy	SWAN_E	Raise 60 sec	\$0.99	-1.72	-\$1.71	
		AGL SA	TORRB3	Energy	\$9,950.72	1.00	\$9,950.72	
		AGL SA	TORRB3	Raise reg	\$1.60	1.00	\$1.60	
		AGL SA	TORRB3	Raise 60 sec	\$0.05	1.72	\$0.09	
		AGL SA	TORRB3	Raise 6 sec	\$0.10	0.83	\$0.08	
		Snowy Hydro	TUMUT3	Raise 6 sec	\$3.00	-0.83	-\$2.50	
17:00	\$9,946.78	Stanwell	GSTONE2	Raise reg	\$1.99	-1.83	-\$3.65	
		Stanwell	STAN-3	Raise reg	\$0.49	0.83	\$0.41	
		Stanwell	STAN-3	Raise 60 sec	\$0.95	-0.83	-\$0.79	
		Stanwell	STAN-3	Raise 6 sec	\$0.95	-0.83	-\$0.79	
		AGL SA	TORRB3	Energy	\$9,950.72	1.00	\$9,950.72	
		AGL SA	TORRB3	Raise reg	\$1.60	1.00	\$1.60	
		AGL SA	TORRB3	Raise 60 sec	\$0.05	1.72	\$0.09	
		AGL SA	TORRB3	Raise 6 sec	\$0.10	0.83	\$0.08	
		TRUenergy						
		Yallourn	YWPS1	Raise 60 sec	\$0.99	-0.89	-\$0.88	
<b>Spot price</b>		<b>\$ 9949/MWh</b>						

**Thursday 10 January – South Australia – 2.30 pm**

<b>Time</b>	<b>Dispatch price</b>	<b>Participant</b>	<b>Unit</b>	<b>Service</b>	<b>Offer price</b>	<b>Marginal change</b>	<b>Contribution</b>
14:05	\$9,999.72	AGL SA	TORRA2	Energy	\$9,999.72	0.13	\$1,259.76
		AGL SA	TORRA3	Energy	\$9,999.72	0.13	\$1,259.76
		AGL SA	TORRA4	Energy	\$9,999.72	0.13	\$1,338.56
		AGL SA	TORRB1	Energy	\$9,999.72	0.20	\$2,047.14
		AGL SA	TORRB2	Energy	\$9,999.72	0.20	\$2,047.14
		AGL SA	TORRB3	Energy	\$9,999.72	0.20	\$2,047.14
14:10	\$9,999.72	AGL SA	TORRA2	Energy	\$9,999.72	0.10	\$1,025.57
		AGL SA	TORRA3	Energy	\$9,999.72	0.10	\$1,025.57
		AGL SA	TORRA4	Energy	\$9,999.72	0.11	\$1,089.67
		AGL SA	TORRB1	Energy	\$9,999.72	0.17	\$1,666.65
		AGL SA	TORRB2	Energy	\$9,999.72	0.17	\$1,666.65
		AGL SA	TORRB3	Energy	\$9,999.72	0.17	\$1,666.65
14:15	\$9,999.72	AGL SA	TORRB4	Energy	\$9,999.72	0.19	\$1,858.95
		AGL SA	TORRA2	Energy	\$9,999.72	0.10	\$1,025.57
		AGL SA	TORRA3	Energy	\$9,999.72	0.10	\$1,025.57
		AGL SA	TORRA4	Energy	\$9,999.72	0.11	\$1,089.67
		AGL SA	TORRB1	Energy	\$9,999.72	0.17	\$1,666.65
		AGL SA	TORRB2	Energy	\$9,999.72	0.17	\$1,666.65
14:20	\$9,999.72	AGL SA	TORRB3	Energy	\$9,999.72	0.17	\$1,666.65
		AGL SA	TORRB4	Energy	\$9,999.72	0.19	\$1,858.95
		AGL SA	TORRA2	Energy	\$9,999.72	0.10	\$1,025.57
		AGL SA	TORRA3	Energy	\$9,999.72	0.10	\$1,025.57
		AGL SA	TORRA4	Energy	\$9,999.72	0.11	\$1,089.67
		AGL SA	TORRB1	Energy	\$9,999.72	0.17	\$1,666.65
14:25	\$9,999.72	AGL SA	TORRB2	Energy	\$9,999.72	0.17	\$1,666.65
		AGL SA	TORRB3	Energy	\$9,999.72	0.17	\$1,666.65
		AGL SA	TORRB4	Energy	\$9,999.72	0.19	\$1,858.95
		AGL SA	TORRA2	Energy	\$9,999.72	0.10	\$1,025.57
		AGL SA	TORRA3	Energy	\$9,999.72	0.10	\$1,025.57
		AGL SA	TORRA4	Energy	\$9,999.72	0.11	\$1,089.67
14:30	\$9,999.72	AGL SA	TORRB1	Energy	\$9,999.72	0.17	\$1,666.65
		AGL SA	TORRB2	Energy	\$9,999.72	0.17	\$1,666.65
		AGL SA	TORRB3	Energy	\$9,999.72	0.17	\$1,666.65
		AGL SA	TORRB4	Energy	\$9,999.72	0.19	\$1,858.95
		AGL SA	TORRA2	Energy	\$9,999.72	0.10	\$1,025.57
		AGL SA	TORRA3	Energy	\$9,999.72	0.10	\$1,025.57
<b>Spot price</b>		<b>\$ 9999.72/MWh</b>					

### Thursday 10 January – South Australia – 3 pm

Time	Dispatch price	Participant	Unit	Service	Offer price	Marginal change	Contribution
14:35	\$9,999.72	AGL SA	TORRA2	Energy	\$9,999.72	0.10	\$1,025.57
		AGL SA	TORRA3	Energy	\$9,999.72	0.10	\$1,025.57
		AGL SA	TORRA4	Energy	\$9,999.72	0.11	\$1,089.67
		AGL SA	TORRB1	Energy	\$9,999.72	0.17	\$1,666.65
		AGL SA	TORRB2	Energy	\$9,999.72	0.17	\$1,666.65
		AGL SA	TORRB3	Energy	\$9,999.72	0.17	\$1,666.65
		AGL SA	TORRB4	Energy	\$9,999.72	0.19	\$1,858.95
14:40	\$9,999.72	AGL SA	TORRA2	Energy	\$9,999.72	0.10	\$1,025.57
		AGL SA	TORRA3	Energy	\$9,999.72	0.10	\$1,025.57
		AGL SA	TORRA4	Energy	\$9,999.72	0.11	\$1,089.67
		AGL SA	TORRB1	Energy	\$9,999.72	0.17	\$1,666.65
		AGL SA	TORRB2	Energy	\$9,999.72	0.17	\$1,666.65
		AGL SA	TORRB3	Energy	\$9,999.72	0.17	\$1,666.65
		AGL SA	TORRB4	Energy	\$9,999.72	0.19	\$1,858.95
14:45	\$9,999.72	AGL SA	TORRA2	Energy	\$9,999.72	0.10	\$1,025.57
		AGL SA	TORRA3	Energy	\$9,999.72	0.10	\$1,025.57
		AGL SA	TORRA4	Energy	\$9,999.72	0.11	\$1,089.67
		AGL SA	TORRB1	Energy	\$9,999.72	0.17	\$1,666.65
		AGL SA	TORRB2	Energy	\$9,999.72	0.17	\$1,666.65
		AGL SA	TORRB3	Energy	\$9,999.72	0.17	\$1,666.65
		AGL SA	TORRB4	Energy	\$9,999.72	0.19	\$1,858.95
14:50	\$9,999.72	AGL SA	TORRA2	Energy	\$9,999.72	0.10	\$1,025.57
		AGL SA	TORRA3	Energy	\$9,999.72	0.10	\$1,025.57
		AGL SA	TORRA4	Energy	\$9,999.72	0.11	\$1,089.67
		AGL SA	TORRB1	Energy	\$9,999.72	0.17	\$1,666.65
		AGL SA	TORRB2	Energy	\$9,999.72	0.17	\$1,666.65
		AGL SA	TORRB3	Energy	\$9,999.72	0.17	\$1,666.65
		AGL SA	TORRB4	Energy	\$9,999.72	0.19	\$1,858.95
14:55	\$9,999.72	AGL SA	TORRA2	Energy	\$9,999.72	0.10	\$1,025.57
		AGL SA	TORRA3	Energy	\$9,999.72	0.10	\$1,025.57
		AGL SA	TORRA4	Energy	\$9,999.72	0.11	\$1,089.67
		AGL SA	TORRB1	Energy	\$9,999.72	0.17	\$1,666.65
		AGL SA	TORRB2	Energy	\$9,999.72	0.17	\$1,666.65
		AGL SA	TORRB3	Energy	\$9,999.72	0.17	\$1,666.65
		AGL SA	TORRB4	Energy	\$9,999.72	0.19	\$1,858.95
15:00	\$9,999.72	AGL SA	TORRA2	Energy	\$9,999.72	0.10	\$1,025.57
		AGL SA	TORRA3	Energy	\$9,999.72	0.10	\$1,025.57
		AGL SA	TORRA4	Energy	\$9,999.72	0.11	\$1,089.67
		AGL SA	TORRB1	Energy	\$9,999.72	0.17	\$1,666.65
		AGL SA	TORRB2	Energy	\$9,999.72	0.17	\$1,666.65
		AGL SA	TORRB3	Energy	\$9,999.72	0.17	\$1,666.65
		AGL SA	TORRB4	Energy	\$9,999.72	0.19	\$1,858.95
<b>Spot price</b>	<b>\$ 9999.72/MWh</b>						



### Thursday 10 January – South Australia – 3.30 pm

Time	Dispatch price	Participant	Unit	Service	Offer price	Marginal change	Contribution
15:05	\$9,999.72	AGL SA	TORRA2	Energy	\$9,999.72	0.10	\$1,025.57
		AGL SA	TORRA3	Energy	\$9,999.72	0.10	\$1,025.57
		AGL SA	TORRA4	Energy	\$9,999.72	0.11	\$1,089.67
		AGL SA	TORRB1	Energy	\$9,999.72	0.17	\$1,666.65
		AGL SA	TORRB2	Energy	\$9,999.72	0.17	\$1,666.65
		AGL SA	TORRB3	Energy	\$9,999.72	0.17	\$1,666.65
		AGL SA	TORRB4	Energy	\$9,999.72	0.19	\$1,858.95
15:10	\$9,999.72	AGL SA	TORRA2	Energy	\$9,999.72	0.10	\$1,025.57
		AGL SA	TORRA3	Energy	\$9,999.72	0.10	\$1,025.57
		AGL SA	TORRA4	Energy	\$9,999.72	0.11	\$1,089.67
		AGL SA	TORRB1	Energy	\$9,999.72	0.17	\$1,666.65
		AGL SA	TORRB2	Energy	\$9,999.72	0.17	\$1,666.65
		AGL SA	TORRB3	Energy	\$9,999.72	0.17	\$1,666.65
		AGL SA	TORRB4	Energy	\$9,999.72	0.19	\$1,858.95
15:15	\$9,999.72	AGL SA	TORRA2	Energy	\$9,999.72	0.10	\$1,025.57
		AGL SA	TORRA3	Energy	\$9,999.72	0.10	\$1,025.57
		AGL SA	TORRA4	Energy	\$9,999.72	0.11	\$1,089.67
		AGL SA	TORRB1	Energy	\$9,999.72	0.17	\$1,666.65
		AGL SA	TORRB2	Energy	\$9,999.72	0.17	\$1,666.65
		AGL SA	TORRB3	Energy	\$9,999.72	0.17	\$1,666.65
		AGL SA	TORRB4	Energy	\$9,999.72	0.19	\$1,858.95
15:20	\$9,999.72	AGL SA	TORRA2	Energy	\$9,999.72	0.10	\$1,025.57
		AGL SA	TORRA3	Energy	\$9,999.72	0.10	\$1,025.57
		AGL SA	TORRA4	Energy	\$9,999.72	0.11	\$1,089.67
		AGL SA	TORRB1	Energy	\$9,999.72	0.17	\$1,666.65
		AGL SA	TORRB2	Energy	\$9,999.72	0.17	\$1,666.65
		AGL SA	TORRB3	Energy	\$9,999.72	0.17	\$1,666.65
		AGL SA	TORRB4	Energy	\$9,999.72	0.19	\$1,858.95
15:25	\$9,999.72	AGL SA	TORRA2	Energy	\$9,999.72	0.10	\$1,025.57
		AGL SA	TORRA3	Energy	\$9,999.72	0.10	\$1,025.57
		AGL SA	TORRA4	Energy	\$9,999.72	0.11	\$1,089.67
		AGL SA	TORRB1	Energy	\$9,999.72	0.17	\$1,666.65
		AGL SA	TORRB2	Energy	\$9,999.72	0.17	\$1,666.65
		AGL SA	TORRB3	Energy	\$9,999.72	0.17	\$1,666.65
		AGL SA	TORRB4	Energy	\$9,999.72	0.19	\$1,858.95
15:30	\$9,999.72	AGL SA	TORRA2	Energy	\$9,999.72	0.10	\$1,025.57
		AGL SA	TORRA3	Energy	\$9,999.72	0.10	\$1,025.57
		AGL SA	TORRA4	Energy	\$9,999.72	0.11	\$1,089.67
		AGL SA	TORRB1	Energy	\$9,999.72	0.17	\$1,666.65
		AGL SA	TORRB2	Energy	\$9,999.72	0.17	\$1,666.65
		AGL SA	TORRB3	Energy	\$9,999.72	0.17	\$1,666.65
		AGL SA	TORRB4	Energy	\$9,999.72	0.19	\$1,858.95
<b>Spot price</b>	<b>\$ 9999.72/MWh</b>						

**Thursday 10 January – South Australia – 4 pm**

<b>Time</b>	<b>Dispatch price</b>	<b>Participant</b>	<b>Unit</b>	<b>Service</b>	<b>Offer price</b>	<b>Marginal change</b>	<b>Contribution</b>
15:35	\$9,999.72	AGL SA	TORRA2	Energy	\$9,999.72	0.10	\$1,025.57
		AGL SA	TORRA3	Energy	\$9,999.72	0.10	\$1,025.57
		AGL SA	TORRA4	Energy	\$9,999.72	0.11	\$1,089.67
		AGL SA	TORRB1	Energy	\$9,999.72	0.17	\$1,666.65
		AGL SA	TORRB2	Energy	\$9,999.72	0.17	\$1,666.65
		AGL SA	TORRB3	Energy	\$9,999.72	0.17	\$1,666.65
		AGL SA	TORRB4	Energy	\$9,999.72	0.19	\$1,858.95
15:40	\$9,999.72	AGL SA	TORRA2	Energy	\$9,999.72	0.10	\$1,025.57
		AGL SA	TORRA3	Energy	\$9,999.72	0.10	\$1,025.57
		AGL SA	TORRA4	Energy	\$9,999.72	0.11	\$1,089.67
		AGL SA	TORRB1	Energy	\$9,999.72	0.17	\$1,666.65
		AGL SA	TORRB2	Energy	\$9,999.72	0.17	\$1,666.65
		AGL SA	TORRB3	Energy	\$9,999.72	0.17	\$1,666.65
		AGL SA	TORRB4	Energy	\$9,999.72	0.19	\$1,858.95
15:45	\$9,999.72	AGL SA	TORRA2	Energy	\$9,999.72	0.10	\$1,025.57
		AGL SA	TORRA3	Energy	\$9,999.72	0.10	\$1,025.57
		AGL SA	TORRA4	Energy	\$9,999.72	0.11	\$1,089.67
		AGL SA	TORRB1	Energy	\$9,999.72	0.17	\$1,666.65
		AGL SA	TORRB2	Energy	\$9,999.72	0.17	\$1,666.65
		AGL SA	TORRB3	Energy	\$9,999.72	0.17	\$1,666.65
		AGL SA	TORRB4	Energy	\$9,999.72	0.19	\$1,858.95
15:50	\$9,999.72	AGL SA	TORRA2	Energy	\$9,999.72	0.10	\$1,025.57
		AGL SA	TORRA3	Energy	\$9,999.72	0.10	\$1,025.57
		AGL SA	TORRA4	Energy	\$9,999.72	0.11	\$1,089.67
		AGL SA	TORRB1	Energy	\$9,999.72	0.17	\$1,666.65
		AGL SA	TORRB2	Energy	\$9,999.72	0.17	\$1,666.65
		AGL SA	TORRB3	Energy	\$9,999.72	0.17	\$1,666.65
		AGL SA	TORRB4	Energy	\$9,999.72	0.19	\$1,858.95
15:55	\$9,999.72	AGL SA	TORRA2	Energy	\$9,999.72	0.10	\$1,025.57
		AGL SA	TORRA3	Energy	\$9,999.72	0.10	\$1,025.57
		AGL SA	TORRA4	Energy	\$9,999.72	0.11	\$1,089.67
		AGL SA	TORRB1	Energy	\$9,999.72	0.17	\$1,666.65
		AGL SA	TORRB2	Energy	\$9,999.72	0.17	\$1,666.65
		AGL SA	TORRB3	Energy	\$9,999.72	0.17	\$1,666.65
		AGL SA	TORRB4	Energy	\$9,999.72	0.19	\$1,858.95
16:00	\$9,999.72	AGL SA	TORRA2	Energy	\$9,999.72	0.10	\$1,025.57
		AGL SA	TORRA3	Energy	\$9,999.72	0.10	\$1,025.57
		AGL SA	TORRA4	Energy	\$9,999.72	0.11	\$1,089.67
		AGL SA	TORRB1	Energy	\$9,999.72	0.17	\$1,666.65
		AGL SA	TORRB2	Energy	\$9,999.72	0.17	\$1,666.65
		AGL SA	TORRB3	Energy	\$9,999.72	0.17	\$1,666.65
		AGL SA	TORRB4	Energy	\$9,999.72	0.19	\$1,858.95
<b>Spot price</b>	<b>\$ 9999.72/MWh</b>						

**Thursday 10 January – South Australia – 4.30 pm**

<b>Time</b>	<b>Dispatch price</b>	<b>Participant</b>	<b>Unit</b>	<b>Service</b>	<b>Offer price</b>	<b>Marginal change</b>	<b>Contribution</b>
16:05	\$9,999.72	AGL SA	TORRA2	Energy	\$9,999.72	0.10	\$1,025.57
		AGL SA	TORRA3	Energy	\$9,999.72	0.10	\$1,025.57
		AGL SA	TORRA4	Energy	\$9,999.72	0.11	\$1,089.67
		AGL SA	TORRB1	Energy	\$9,999.72	0.17	\$1,666.65
		AGL SA	TORRB2	Energy	\$9,999.72	0.17	\$1,666.65
		AGL SA	TORRB3	Energy	\$9,999.72	0.17	\$1,666.65
		AGL SA	TORRB4	Energy	\$9,999.72	0.19	\$1,858.95
16:10	\$9,999.72	AGL SA	TORRA2	Energy	\$9,999.72	0.10	\$1,025.57
		AGL SA	TORRA3	Energy	\$9,999.72	0.10	\$1,025.57
		AGL SA	TORRA4	Energy	\$9,999.72	0.11	\$1,089.67
		AGL SA	TORRB1	Energy	\$9,999.72	0.17	\$1,666.65
		AGL SA	TORRB2	Energy	\$9,999.72	0.17	\$1,666.65
		AGL SA	TORRB3	Energy	\$9,999.72	0.17	\$1,666.65
		AGL SA	TORRB4	Energy	\$9,999.72	0.19	\$1,858.95
16:15	\$9,999.72	AGL SA	TORRA2	Energy	\$9,999.72	0.10	\$1,025.57
		AGL SA	TORRA3	Energy	\$9,999.72	0.10	\$1,025.57
		AGL SA	TORRA4	Energy	\$9,999.72	0.11	\$1,089.67
		AGL SA	TORRB1	Energy	\$9,999.72	0.17	\$1,666.65
		AGL SA	TORRB2	Energy	\$9,999.72	0.17	\$1,666.65
		AGL SA	TORRB3	Energy	\$9,999.72	0.17	\$1,666.65
		AGL SA	TORRB4	Energy	\$9,999.72	0.19	\$1,858.95
16:20	\$9,999.72	AGL SA	TORRA2	Energy	\$9,999.72	0.10	\$1,025.57
		AGL SA	TORRA3	Energy	\$9,999.72	0.10	\$1,025.57
		AGL SA	TORRA4	Energy	\$9,999.72	0.11	\$1,089.67
		AGL SA	TORRB1	Energy	\$9,999.72	0.17	\$1,666.65
		AGL SA	TORRB2	Energy	\$9,999.72	0.17	\$1,666.65
		AGL SA	TORRB3	Energy	\$9,999.72	0.17	\$1,666.65
		AGL SA	TORRB4	Energy	\$9,999.72	0.19	\$1,858.95
16:25	\$9,999.72	AGL SA	TORRA2	Energy	\$9,999.72	0.10	\$1,025.57
		AGL SA	TORRA3	Energy	\$9,999.72	0.10	\$1,025.57
		AGL SA	TORRA4	Energy	\$9,999.72	0.11	\$1,089.67
		AGL SA	TORRB1	Energy	\$9,999.72	0.17	\$1,666.65
		AGL SA	TORRB2	Energy	\$9,999.72	0.17	\$1,666.65
		AGL SA	TORRB3	Energy	\$9,999.72	0.17	\$1,666.65
		AGL SA	TORRB4	Energy	\$9,999.72	0.19	\$1,858.95
16:30	\$9,999.72	AGL SA	TORRA2	Energy	\$9,999.72	0.10	\$1,025.57
		AGL SA	TORRA3	Energy	\$9,999.72	0.10	\$1,025.57
		AGL SA	TORRA4	Energy	\$9,999.72	0.11	\$1,089.67
		AGL SA	TORRB1	Energy	\$9,999.72	0.17	\$1,666.65
		AGL SA	TORRB2	Energy	\$9,999.72	0.17	\$1,666.65
		AGL SA	TORRB3	Energy	\$9,999.72	0.17	\$1,666.65
		AGL SA	TORRB4	Energy	\$9,999.72	0.19	\$1,858.95
<b>Spot price</b>	<b>\$ 9999.72/MWh</b>						

**Thursday 10 January – South Australia – 5 pm**

<b>Time</b>	<b>Dispatch price</b>	<b>Participant</b>	<b>Unit</b>	<b>Service</b>	<b>Offer price</b>	<b>Marginal change</b>	<b>Contribution</b>
16:35	\$9,999.72	AGL SA	TORRA2	Energy	\$9,999.72	0.10	\$1,025.57
		AGL SA	TORRA3	Energy	\$9,999.72	0.10	\$1,025.57
		AGL SA	TORRA4	Energy	\$9,999.72	0.11	\$1,089.67
		AGL SA	TORRB1	Energy	\$9,999.72	0.17	\$1,666.65
		AGL SA	TORRB2	Energy	\$9,999.72	0.17	\$1,666.65
		AGL SA	TORRB3	Energy	\$9,999.72	0.17	\$1,666.65
		AGL SA	TORRB4	Energy	\$9,999.72	0.19	\$1,858.95
16:40	\$9,999.72	AGL SA	TORRA2	Energy	\$9,999.72	0.10	\$1,025.57
		AGL SA	TORRA3	Energy	\$9,999.72	0.10	\$1,025.57
		AGL SA	TORRA4	Energy	\$9,999.72	0.11	\$1,089.67
		AGL SA	TORRB1	Energy	\$9,999.72	0.17	\$1,666.65
		AGL SA	TORRB2	Energy	\$9,999.72	0.17	\$1,666.65
		AGL SA	TORRB3	Energy	\$9,999.72	0.17	\$1,666.65
		AGL SA	TORRB4	Energy	\$9,999.72	0.19	\$1,858.95
16:45	\$9,999.72	AGL SA	TORRA2	Energy	\$9,999.72	0.10	\$1,025.57
		AGL SA	TORRA3	Energy	\$9,999.72	0.10	\$1,025.57
		AGL SA	TORRA4	Energy	\$9,999.72	0.11	\$1,089.67
		AGL SA	TORRB1	Energy	\$9,999.72	0.17	\$1,666.65
		AGL SA	TORRB2	Energy	\$9,999.72	0.17	\$1,666.65
		AGL SA	TORRB3	Energy	\$9,999.72	0.17	\$1,666.65
		AGL SA	TORRB4	Energy	\$9,999.72	0.19	\$1,858.95
16:50	\$9,999.72	AGL SA	TORRA2	Energy	\$9,999.72	0.10	\$1,025.57
		AGL SA	TORRA3	Energy	\$9,999.72	0.10	\$1,025.57
		AGL SA	TORRA4	Energy	\$9,999.72	0.11	\$1,089.67
		AGL SA	TORRB1	Energy	\$9,999.72	0.17	\$1,666.65
		AGL SA	TORRB2	Energy	\$9,999.72	0.17	\$1,666.65
		AGL SA	TORRB3	Energy	\$9,999.72	0.17	\$1,666.65
		AGL SA	TORRB4	Energy	\$9,999.72	0.19	\$1,858.95
16:55	\$9,999.72	AGL SA	TORRA2	Energy	\$9,999.72	0.10	\$1,025.57
		AGL SA	TORRA3	Energy	\$9,999.72	0.10	\$1,025.57
		AGL SA	TORRA4	Energy	\$9,999.72	0.11	\$1,089.67
		AGL SA	TORRB1	Energy	\$9,999.72	0.17	\$1,666.65
		AGL SA	TORRB2	Energy	\$9,999.72	0.17	\$1,666.65
		AGL SA	TORRB3	Energy	\$9,999.72	0.17	\$1,666.65
		AGL SA	TORRB4	Energy	\$9,999.72	0.19	\$1,858.95
17:00	\$9,999.72	AGL SA	TORRA2	Energy	\$9,999.72	0.10	\$1,025.57
		AGL SA	TORRA3	Energy	\$9,999.72	0.10	\$1,025.57
		AGL SA	TORRA4	Energy	\$9,999.72	0.11	\$1,089.67
		AGL SA	TORRB1	Energy	\$9,999.72	0.17	\$1,666.65
		AGL SA	TORRB2	Energy	\$9,999.72	0.17	\$1,666.65
		AGL SA	TORRB3	Energy	\$9,999.72	0.17	\$1,666.65
		AGL SA	TORRB4	Energy	\$9,999.72	0.19	\$1,858.95
<b>Spot price</b>	<b>\$ 9999.72/MWh</b>						

**Thursday 10 January – South Australia – 5.30 pm**

<b>Time</b>	<b>Dispatch price</b>	<b>Participant</b>	<b>Unit</b>	<b>Service</b>	<b>Offer price</b>	<b>Marginal change</b>	<b>Contribution</b>
17:05	\$9,999.72	AGL SA	TORRA2	Energy	\$9,999.72	0.10	\$1,025.57
		AGL SA	TORRA3	Energy	\$9,999.72	0.10	\$1,025.57
		AGL SA	TORRA4	Energy	\$9,999.72	0.11	\$1,089.67
		AGL SA	TORRB1	Energy	\$9,999.72	0.17	\$1,666.65
		AGL SA	TORRB2	Energy	\$9,999.72	0.17	\$1,666.65
		AGL SA	TORRB3	Energy	\$9,999.72	0.17	\$1,666.65
		AGL SA	TORRB4	Energy	\$9,999.72	0.19	\$1,858.95
17:10	\$9,999.72	AGL SA	TORRA2	Energy	\$9,999.72	0.10	\$1,025.57
		AGL SA	TORRA3	Energy	\$9,999.72	0.10	\$1,025.57
		AGL SA	TORRA4	Energy	\$9,999.72	0.11	\$1,089.67
		AGL SA	TORRB1	Energy	\$9,999.72	0.17	\$1,666.65
		AGL SA	TORRB2	Energy	\$9,999.72	0.17	\$1,666.65
		AGL SA	TORRB3	Energy	\$9,999.72	0.17	\$1,666.65
		AGL SA	TORRB4	Energy	\$9,999.72	0.19	\$1,858.95
17:15	\$9,999.72	AGL SA	TORRA2	Energy	\$9,999.72	0.10	\$1,025.57
		AGL SA	TORRA3	Energy	\$9,999.72	0.10	\$1,025.57
		AGL SA	TORRA4	Energy	\$9,999.72	0.11	\$1,089.67
		AGL SA	TORRB1	Energy	\$9,999.72	0.17	\$1,666.65
		AGL SA	TORRB2	Energy	\$9,999.72	0.17	\$1,666.65
		AGL SA	TORRB3	Energy	\$9,999.72	0.17	\$1,666.65
		AGL SA	TORRB4	Energy	\$9,999.72	0.19	\$1,858.95
17:20	\$9,999.72	AGL SA	TORRA2	Energy	\$9,999.72	0.10	\$1,025.57
		AGL SA	TORRA3	Energy	\$9,999.72	0.10	\$1,025.57
		AGL SA	TORRA4	Energy	\$9,999.72	0.11	\$1,089.67
		AGL SA	TORRB1	Energy	\$9,999.72	0.17	\$1,666.65
		AGL SA	TORRB2	Energy	\$9,999.72	0.17	\$1,666.65
		AGL SA	TORRB3	Energy	\$9,999.72	0.17	\$1,666.65
		AGL SA	TORRB4	Energy	\$9,999.72	0.19	\$1,858.95
17:25	\$9,999.72	AGL SA	TORRA2	Energy	\$9,999.72	0.10	\$1,025.57
		AGL SA	TORRA3	Energy	\$9,999.72	0.10	\$1,025.57
		AGL SA	TORRA4	Energy	\$9,999.72	0.11	\$1,089.67
		AGL SA	TORRB1	Energy	\$9,999.72	0.17	\$1,666.65
		AGL SA	TORRB2	Energy	\$9,999.72	0.17	\$1,666.65
		AGL SA	TORRB3	Energy	\$9,999.72	0.17	\$1,666.65
		AGL SA	TORRB4	Energy	\$9,999.72	0.19	\$1,858.95
17:30	\$9,999.72	AGL SA	TORRA2	Energy	\$9,999.72	0.10	\$1,025.57
		AGL SA	TORRA3	Energy	\$9,999.72	0.10	\$1,025.57
		AGL SA	TORRA4	Energy	\$9,999.72	0.11	\$1,089.67
		AGL SA	TORRB1	Energy	\$9,999.72	0.17	\$1,666.65
		AGL SA	TORRB2	Energy	\$9,999.72	0.17	\$1,666.65
		AGL SA	TORRB3	Energy	\$9,999.72	0.17	\$1,666.65
		AGL SA	TORRB4	Energy	\$9,999.72	0.19	\$1,858.95
<b>Spot price</b>	<b>\$ 9999.72/MWh</b>						

**Monday 18 February – South Australia – 1 pm**

<b>Time</b>	<b>Dispatch price</b>	<b>Participant</b>	<b>Unit</b>	<b>Service</b>	<b>Offer price</b>	<b>Marginal change</b>	<b>Contribution</b>
12:35	\$9,999.72	AGL SA	TORRA1	Energy	\$9,999.72	0.50	\$4,999.86
		AGL SA	TORRA3	Energy	\$9,999.72	0.50	\$4,999.86
12:40	\$9,999.72	AGL SA	TORRA1	Energy	\$9,999.72	0.11	\$1,052.57
		AGL SA	TORRA3	Energy	\$9,999.72	0.11	\$1,052.57
		AGL SA	TORRB1	Energy	\$9,999.72	0.20	\$1,973.64
		AGL SA	TORRB2	Energy	\$9,999.72	0.20	\$1,973.64
		AGL SA	TORRB3	Energy	\$9,999.72	0.20	\$1,973.64
		AGL SA	TORRB4	Energy	\$9,999.72	0.20	\$1,973.64
12:45	\$9,999.72	AGL SA	TORRA1	Energy	\$9,999.72	0.50	\$4,999.86
		AGL SA	TORRA3	Energy	\$9,999.72	0.50	\$4,999.86
12:50	\$9,999.72	AGL SA	TORRA1	Energy	\$9,999.72	0.50	\$4,999.86
		AGL SA	TORRA3	Energy	\$9,999.72	0.50	\$4,999.86
12:55	\$9,999.72	AGL SA	TORRA1	Energy	\$9,999.72	0.11	\$1,052.57
		AGL SA	TORRA3	Energy	\$9,999.72	0.11	\$1,052.57
		AGL SA	TORRB1	Energy	\$9,999.72	0.20	\$1,973.64
		AGL SA	TORRB2	Energy	\$9,999.72	0.20	\$1,973.64
		AGL SA	TORRB3	Energy	\$9,999.72	0.20	\$1,973.64
		AGL SA	TORRB4	Energy	\$9,999.72	0.20	\$1,973.64
13:00	\$9,999.72	AGL SA	TORRA1	Energy	\$9,999.72	0.11	\$1,052.57
		AGL SA	TORRA3	Energy	\$9,999.72	0.11	\$1,052.57
		AGL SA	TORRB1	Energy	\$9,999.72	0.20	\$1,973.64
		AGL SA	TORRB2	Energy	\$9,999.72	0.20	\$1,973.64
		AGL SA	TORRB3	Energy	\$9,999.72	0.20	\$1,973.64
		AGL SA	TORRB4	Energy	\$9,999.72	0.20	\$1,973.64
<b>Spot price</b>	<b>\$ 9999.72/MWh</b>						

**Monday 18 February – South Australia – 1.30 pm**

<b>Time</b>	<b>Dispatch price</b>	<b>Participant</b>	<b>Unit</b>	<b>Service</b>	<b>Offer price</b>	<b>Marginal change</b>	<b>Contribution</b>
13:05	\$9,998.92	AGL SA	TORRB1	Energy	\$9,999.72	0.25	\$2,499.93
		AGL SA	TORRB2	Energy	\$9,999.72	0.25	\$2,499.93
		AGL SA	TORRB3	Energy	\$9,999.72	0.25	\$2,499.93
		AGL SA	TORRB4	Energy	\$9,999.72	0.25	\$2,499.93
		AGL SA	TORRB1	Lower reg	\$1.00	0.25	\$0.25
		AGL SA	TORRB2	Lower reg	\$1.00	0.25	\$0.25
		AGL SA	TORRB3	Lower reg	\$1.00	0.25	\$0.25
		AGL SA	TORRB4	Lower reg	\$1.00	0.25	\$0.25
		Hydro TAS	DEVILS_G	Lower reg	\$1.80	-1.00	-\$1.80
		Hydro TAS	DEVILS_G	Lower 5 min	\$0.78	1.00	\$0.78
		Hydro TAS	GORDON	Lower 5 min	\$0.78	-1.00	-\$0.78
13:10	\$9,999.72	AGL SA	TORRA1	Energy	\$9,999.72	0.11	\$1,052.57
		AGL SA	TORRA3	Energy	\$9,999.72	0.11	\$1,052.57
		AGL SA	TORRB1	Energy	\$9,999.72	0.20	\$1,973.64
		AGL SA	TORRB2	Energy	\$9,999.72	0.20	\$1,973.64
		AGL SA	TORRB3	Energy	\$9,999.72	0.20	\$1,973.64
		AGL SA	TORRB4	Energy	\$9,999.72	0.20	\$1,973.64
13:15	\$9,999.72	AGL SA	TORRA1	Energy	\$9,999.72	0.11	\$1,052.57
		AGL SA	TORRA3	Energy	\$9,999.72	0.11	\$1,052.57
		AGL SA	TORRB1	Energy	\$9,999.72	0.20	\$1,973.64
		AGL SA	TORRB2	Energy	\$9,999.72	0.20	\$1,973.64
		AGL SA	TORRB3	Energy	\$9,999.72	0.20	\$1,973.64
		AGL SA	TORRB4	Energy	\$9,999.72	0.20	\$1,973.64
13:20	\$9,999.72	AGL SA	TORRA1	Energy	\$9,999.72	0.11	\$1,052.57
		AGL SA	TORRA3	Energy	\$9,999.72	0.11	\$1,052.57
		AGL SA	TORRB1	Energy	\$9,999.72	0.20	\$1,973.64
		AGL SA	TORRB2	Energy	\$9,999.72	0.20	\$1,973.64
		AGL SA	TORRB3	Energy	\$9,999.72	0.20	\$1,973.64
		AGL SA	TORRB4	Energy	\$9,999.72	0.20	\$1,973.64
13:25	\$9,999.72	AGL SA	TORRA1	Energy	\$9,999.72	0.11	\$1,052.57
		AGL SA	TORRA3	Energy	\$9,999.72	0.11	\$1,052.57
		AGL SA	TORRB1	Energy	\$9,999.72	0.20	\$1,973.64
		AGL SA	TORRB2	Energy	\$9,999.72	0.20	\$1,973.64
		AGL SA	TORRB3	Energy	\$9,999.72	0.20	\$1,973.64
		AGL SA	TORRB4	Energy	\$9,999.72	0.20	\$1,973.64
13:30	\$9,999.72	AGL SA	TORRA1	Energy	\$9,999.72	0.11	\$1,052.57
		AGL SA	TORRA3	Energy	\$9,999.72	0.11	\$1,052.57
		AGL SA	TORRB1	Energy	\$9,999.72	0.20	\$1,973.64
		AGL SA	TORRB2	Energy	\$9,999.72	0.20	\$1,973.64
		AGL SA	TORRB3	Energy	\$9,999.72	0.20	\$1,973.64
		AGL SA	TORRB4	Energy	\$9,999.72	0.20	\$1,973.64
<b>Spot price</b>	<b>\$ 9999.59/MWh</b>						

## Monday 18 February – South Australia – 2 pm

Time	Dispatch price	Participant	Unit	Service	Offer price	Marginal change	Contribution
13:35	\$9,999.72	AGL SA	TORRA1	Energy	\$9,999.72	0.11	\$1,052.57
		AGL SA	TORRA3	Energy	\$9,999.72	0.11	\$1,052.57
		AGL SA	TORRB1	Energy	\$9,999.72	0.20	\$1,973.64
		AGL SA	TORRB2	Energy	\$9,999.72	0.20	\$1,973.64
		AGL SA	TORRB3	Energy	\$9,999.72	0.20	\$1,973.64
		AGL SA	TORRB4	Energy	\$9,999.72	0.20	\$1,973.64
13:40	\$9,999.72	AGL SA	TORRA1	Energy	\$9,999.72	0.11	\$1,052.57
		AGL SA	TORRA3	Energy	\$9,999.72	0.11	\$1,052.57
		AGL SA	TORRB1	Energy	\$9,999.72	0.20	\$1,973.64
		AGL SA	TORRB2	Energy	\$9,999.72	0.20	\$1,973.64
		AGL SA	TORRB3	Energy	\$9,999.72	0.20	\$1,973.64
		AGL SA	TORRB4	Energy	\$9,999.72	0.20	\$1,973.64
13:45	\$9,999.72	AGL SA	TORRA1	Energy	\$9,999.72	0.11	\$1,052.57
		AGL SA	TORRA3	Energy	\$9,999.72	0.11	\$1,052.57
		AGL SA	TORRB1	Energy	\$9,999.72	0.20	\$1,973.64
		AGL SA	TORRB2	Energy	\$9,999.72	0.20	\$1,973.64
		AGL SA	TORRB3	Energy	\$9,999.72	0.20	\$1,973.64
		AGL SA	TORRB4	Energy	\$9,999.72	0.20	\$1,973.64
13:50	\$9,999.72	AGL SA	TORRA1	Energy	\$9,999.72	0.11	\$1,052.57
		AGL SA	TORRA3	Energy	\$9,999.72	0.11	\$1,052.57
		AGL SA	TORRB1	Energy	\$9,999.72	0.20	\$1,973.64
		AGL SA	TORRB2	Energy	\$9,999.72	0.20	\$1,973.64
		AGL SA	TORRB3	Energy	\$9,999.72	0.20	\$1,973.64
		AGL SA	TORRB4	Energy	\$9,999.72	0.20	\$1,973.64
13:55	\$9,999.72	AGL SA	TORRA1	Energy	\$9,999.72	0.11	\$1,052.57
		AGL SA	TORRA3	Energy	\$9,999.72	0.11	\$1,052.57
		AGL SA	TORRB1	Energy	\$9,999.72	0.20	\$1,973.64
		AGL SA	TORRB2	Energy	\$9,999.72	0.20	\$1,973.64
		AGL SA	TORRB3	Energy	\$9,999.72	0.20	\$1,973.64
		AGL SA	TORRB4	Energy	\$9,999.72	0.20	\$1,973.64
14:00	\$9,999.72	AGL SA	TORRA1	Energy	\$9,999.72	0.11	\$1,052.57
		AGL SA	TORRA3	Energy	\$9,999.72	0.11	\$1,052.57
		AGL SA	TORRB1	Energy	\$9,999.72	0.20	\$1,973.64
		AGL SA	TORRB2	Energy	\$9,999.72	0.20	\$1,973.64
		AGL SA	TORRB3	Energy	\$9,999.72	0.20	\$1,973.64
		AGL SA	TORRB4	Energy	\$9,999.72	0.20	\$1,973.64
<b>Spot price</b>	<b>\$ 9999.72/MWh</b>						



**Monday 18 February – South Australia – 2.30 pm**

<b>Time</b>	<b>Dispatch price</b>	<b>Participant</b>	<b>Unit</b>	<b>Service</b>	<b>Offer price</b>	<b>Marginal change</b>	<b>Contribution</b>
14:05	\$9,999.72	AGL SA	TORRA1	Energy	\$9,999.72	0.11	\$1,052.57
		AGL SA	TORRA3	Energy	\$9,999.72	0.11	\$1,052.57
		AGL SA	TORRB1	Energy	\$9,999.72	0.20	\$1,973.64
		AGL SA	TORRB2	Energy	\$9,999.72	0.20	\$1,973.64
		AGL SA	TORRB3	Energy	\$9,999.72	0.20	\$1,973.64
		AGL SA	TORRB4	Energy	\$9,999.72	0.20	\$1,973.64
14:10	\$9,999.72	AGL SA	TORRA1	Energy	\$9,999.72	0.11	\$1,052.57
		AGL SA	TORRA3	Energy	\$9,999.72	0.11	\$1,052.57
		AGL SA	TORRB1	Energy	\$9,999.72	0.20	\$1,973.64
		AGL SA	TORRB2	Energy	\$9,999.72	0.20	\$1,973.64
		AGL SA	TORRB3	Energy	\$9,999.72	0.20	\$1,973.64
		AGL SA	TORRB4	Energy	\$9,999.72	0.20	\$1,973.64
14:15	\$9,999.72	AGL SA	TORRA1	Energy	\$9,999.72	0.11	\$1,052.57
		AGL SA	TORRA3	Energy	\$9,999.72	0.11	\$1,052.57
		AGL SA	TORRB1	Energy	\$9,999.72	0.20	\$1,973.64
		AGL SA	TORRB2	Energy	\$9,999.72	0.20	\$1,973.64
		AGL SA	TORRB3	Energy	\$9,999.72	0.20	\$1,973.64
		AGL SA	TORRB4	Energy	\$9,999.72	0.20	\$1,973.64
14:20	\$9,999.72	AGL SA	TORRA1	Energy	\$9,999.72	0.11	\$1,052.57
		AGL SA	TORRA3	Energy	\$9,999.72	0.11	\$1,052.57
		AGL SA	TORRB1	Energy	\$9,999.72	0.20	\$1,973.64
		AGL SA	TORRB2	Energy	\$9,999.72	0.20	\$1,973.64
		AGL SA	TORRB3	Energy	\$9,999.72	0.20	\$1,973.64
		AGL SA	TORRB4	Energy	\$9,999.72	0.20	\$1,973.64
14:25	\$9,999.72	AGL SA	TORRA1	Energy	\$9,999.72	0.11	\$1,052.57
		AGL SA	TORRA3	Energy	\$9,999.72	0.11	\$1,052.57
		AGL SA	TORRB1	Energy	\$9,999.72	0.20	\$1,973.64
		AGL SA	TORRB2	Energy	\$9,999.72	0.20	\$1,973.64
		AGL SA	TORRB3	Energy	\$9,999.72	0.20	\$1,973.64
		AGL SA	TORRB4	Energy	\$9,999.72	0.20	\$1,973.64
14:30	\$9,999.72	AGL SA	TORRA1	Energy	\$9,999.72	0.11	\$1,052.57
		AGL SA	TORRA3	Energy	\$9,999.72	0.11	\$1,052.57
		AGL SA	TORRB1	Energy	\$9,999.72	0.20	\$1,973.64
		AGL SA	TORRB2	Energy	\$9,999.72	0.20	\$1,973.64
		AGL SA	TORRB3	Energy	\$9,999.72	0.20	\$1,973.64
		AGL SA	TORRB4	Energy	\$9,999.72	0.20	\$1,973.64
<b>Spot price</b>	<b>\$ 9999.72/MWh</b>						

## Monday 18 February – South Australia – 3 pm

Time	Dispatch price	Participant	Unit	Service	Offer price	Marginal change	Contribution
14:35	\$9,999.72	AGL SA	TORRA1	Energy	\$9,999.72	0.11	\$1,052.57
		AGL SA	TORRA3	Energy	\$9,999.72	0.11	\$1,052.57
		AGL SA	TORRB1	Energy	\$9,999.72	0.20	\$1,973.64
		AGL SA	TORRB2	Energy	\$9,999.72	0.20	\$1,973.64
		AGL SA	TORRB3	Energy	\$9,999.72	0.20	\$1,973.64
		AGL SA	TORRB4	Energy	\$9,999.72	0.20	\$1,973.64
14:40	\$9,999.72	AGL SA	TORRA1	Energy	\$9,999.72	0.11	\$1,052.57
		AGL SA	TORRA3	Energy	\$9,999.72	0.11	\$1,052.57
		AGL SA	TORRB1	Energy	\$9,999.72	0.20	\$1,973.64
		AGL SA	TORRB2	Energy	\$9,999.72	0.20	\$1,973.64
		AGL SA	TORRB3	Energy	\$9,999.72	0.20	\$1,973.64
		AGL SA	TORRB4	Energy	\$9,999.72	0.20	\$1,973.64
14:45	\$9,999.72	AGL SA	TORRA1	Energy	\$9,999.72	0.11	\$1,052.57
		AGL SA	TORRA3	Energy	\$9,999.72	0.11	\$1,052.57
		AGL SA	TORRB1	Energy	\$9,999.72	0.20	\$1,973.64
		AGL SA	TORRB2	Energy	\$9,999.72	0.20	\$1,973.64
		AGL SA	TORRB3	Energy	\$9,999.72	0.20	\$1,973.64
		AGL SA	TORRB4	Energy	\$9,999.72	0.20	\$1,973.64
14:50	\$9,999.72	AGL SA	TORRA1	Energy	\$9,999.72	0.11	\$1,052.57
		AGL SA	TORRA3	Energy	\$9,999.72	0.11	\$1,052.57
		AGL SA	TORRB1	Energy	\$9,999.72	0.20	\$1,973.64
		AGL SA	TORRB2	Energy	\$9,999.72	0.20	\$1,973.64
		AGL SA	TORRB3	Energy	\$9,999.72	0.20	\$1,973.64
		AGL SA	TORRB4	Energy	\$9,999.72	0.20	\$1,973.64
14:55	\$9,999.72	AGL SA	TORRA1	Energy	\$9,999.72	0.11	\$1,052.57
		AGL SA	TORRA3	Energy	\$9,999.72	0.11	\$1,052.57
		AGL SA	TORRB1	Energy	\$9,999.72	0.20	\$1,973.64
		AGL SA	TORRB2	Energy	\$9,999.72	0.20	\$1,973.64
		AGL SA	TORRB3	Energy	\$9,999.72	0.20	\$1,973.64
		AGL SA	TORRB4	Energy	\$9,999.72	0.20	\$1,973.64
15:00	\$9,999.72	AGL SA	TORRA1	Energy	\$9,999.72	0.11	\$1,052.57
		AGL SA	TORRA3	Energy	\$9,999.72	0.11	\$1,052.57
		AGL SA	TORRB1	Energy	\$9,999.72	0.20	\$1,973.64
		AGL SA	TORRB2	Energy	\$9,999.72	0.20	\$1,973.64
		AGL SA	TORRB3	Energy	\$9,999.72	0.20	\$1,973.64
		AGL SA	TORRB4	Energy	\$9,999.72	0.20	\$1,973.64
<b>Spot price</b>	<b>\$ 9999.72/MWh</b>						

**Monday 18 February – South Australia – 3.30 pm**

<b>Time</b>	<b>Dispatch price</b>	<b>Participant</b>	<b>Unit</b>	<b>Service</b>	<b>Offer price</b>	<b>Marginal change</b>	<b>Contribution</b>
15:05	\$9,999.72	AGL SA	TORRA1	Energy	\$9,999.72	0.11	\$1,052.57
		AGL SA	TORRA3	Energy	\$9,999.72	0.11	\$1,052.57
		AGL SA	TORRB1	Energy	\$9,999.72	0.20	\$1,973.64
		AGL SA	TORRB2	Energy	\$9,999.72	0.20	\$1,973.64
		AGL SA	TORRB3	Energy	\$9,999.72	0.20	\$1,973.64
		AGL SA	TORRB4	Energy	\$9,999.72	0.20	\$1,973.64
15:10	\$9,999.72	AGL SA	TORRA1	Energy	\$9,999.72	0.11	\$1,052.57
		AGL SA	TORRA3	Energy	\$9,999.72	0.11	\$1,052.57
		AGL SA	TORRB1	Energy	\$9,999.72	0.20	\$1,973.64
		AGL SA	TORRB2	Energy	\$9,999.72	0.20	\$1,973.64
		AGL SA	TORRB3	Energy	\$9,999.72	0.20	\$1,973.64
		AGL SA	TORRB4	Energy	\$9,999.72	0.20	\$1,973.64
15:15	\$9,999.72	AGL SA	TORRA1	Energy	\$9,999.72	0.11	\$1,052.57
		AGL SA	TORRA3	Energy	\$9,999.72	0.11	\$1,052.57
		AGL SA	TORRB1	Energy	\$9,999.72	0.20	\$1,973.64
		AGL SA	TORRB2	Energy	\$9,999.72	0.20	\$1,973.64
		AGL SA	TORRB3	Energy	\$9,999.72	0.20	\$1,973.64
		AGL SA	TORRB4	Energy	\$9,999.72	0.20	\$1,973.64
15:20	\$9,999.72	AGL SA	TORRA1	Energy	\$9,999.72	0.11	\$1,052.57
		AGL SA	TORRA3	Energy	\$9,999.72	0.11	\$1,052.57
		AGL SA	TORRB1	Energy	\$9,999.72	0.20	\$1,973.64
		AGL SA	TORRB2	Energy	\$9,999.72	0.20	\$1,973.64
		AGL SA	TORRB3	Energy	\$9,999.72	0.20	\$1,973.64
		AGL SA	TORRB4	Energy	\$9,999.72	0.20	\$1,973.64
15:25	\$9,999.72	AGL SA	TORRA1	Energy	\$9,999.72	0.11	\$1,052.57
		AGL SA	TORRA3	Energy	\$9,999.72	0.11	\$1,052.57
		AGL SA	TORRB1	Energy	\$9,999.72	0.20	\$1,973.64
		AGL SA	TORRB2	Energy	\$9,999.72	0.20	\$1,973.64
		AGL SA	TORRB3	Energy	\$9,999.72	0.20	\$1,973.64
		AGL SA	TORRB4	Energy	\$9,999.72	0.20	\$1,973.64
15:30	\$9,999.72	AGL SA	TORRA1	Energy	\$9,999.72	0.11	\$1,052.57
		AGL SA	TORRA3	Energy	\$9,999.72	0.11	\$1,052.57
		AGL SA	TORRB1	Energy	\$9,999.72	0.20	\$1,973.64
		AGL SA	TORRB2	Energy	\$9,999.72	0.20	\$1,973.64
		AGL SA	TORRB3	Energy	\$9,999.72	0.20	\$1,973.64
		AGL SA	TORRB4	Energy	\$9,999.72	0.20	\$1,973.64
<b>Spot price</b>	<b>\$ 9999.72/MWh</b>						

## Monday 18 February – South Australia – 4 pm

Time	Dispatch price	Participant	Unit	Service	Offer price	Marginal change	Contribution
15:35	\$9,999.72	AGL SA	TORRA1	Energy	\$9,999.72	0.11	\$1,052.57
		AGL SA	TORRA3	Energy	\$9,999.72	0.11	\$1,052.57
		AGL SA	TORRB1	Energy	\$9,999.72	0.20	\$1,973.64
		AGL SA	TORRB2	Energy	\$9,999.72	0.20	\$1,973.64
		AGL SA	TORRB3	Energy	\$9,999.72	0.20	\$1,973.64
		AGL SA	TORRB4	Energy	\$9,999.72	0.20	\$1,973.64
15:40	\$9,999.72	AGL SA	TORRA1	Energy	\$9,999.72	0.11	\$1,052.57
		AGL SA	TORRA3	Energy	\$9,999.72	0.11	\$1,052.57
		AGL SA	TORRB1	Energy	\$9,999.72	0.20	\$1,973.64
		AGL SA	TORRB2	Energy	\$9,999.72	0.20	\$1,973.64
		AGL SA	TORRB3	Energy	\$9,999.72	0.20	\$1,973.64
		AGL SA	TORRB4	Energy	\$9,999.72	0.20	\$1,973.64
15:45	\$9,999.72	AGL SA	TORRA1	Energy	\$9,999.72	0.11	\$1,052.57
		AGL SA	TORRA3	Energy	\$9,999.72	0.11	\$1,052.57
		AGL SA	TORRB1	Energy	\$9,999.72	0.20	\$1,973.64
		AGL SA	TORRB2	Energy	\$9,999.72	0.20	\$1,973.64
		AGL SA	TORRB3	Energy	\$9,999.72	0.20	\$1,973.64
		AGL SA	TORRB4	Energy	\$9,999.72	0.20	\$1,973.64
15:50	\$9,999.72	AGL SA	TORRA1	Energy	\$9,999.72	0.11	\$1,052.57
		AGL SA	TORRA3	Energy	\$9,999.72	0.11	\$1,052.57
		AGL SA	TORRB1	Energy	\$9,999.72	0.20	\$1,973.64
		AGL SA	TORRB2	Energy	\$9,999.72	0.20	\$1,973.64
		AGL SA	TORRB3	Energy	\$9,999.72	0.20	\$1,973.64
		AGL SA	TORRB4	Energy	\$9,999.72	0.20	\$1,973.64
15:55	\$9,999.72	AGL SA	TORRA1	Energy	\$9,999.72	0.11	\$1,052.57
		AGL SA	TORRA3	Energy	\$9,999.72	0.11	\$1,052.57
		AGL SA	TORRB1	Energy	\$9,999.72	0.20	\$1,973.64
		AGL SA	TORRB2	Energy	\$9,999.72	0.20	\$1,973.64
		AGL SA	TORRB3	Energy	\$9,999.72	0.20	\$1,973.64
		AGL SA	TORRB4	Energy	\$9,999.72	0.20	\$1,973.64
16:00	\$9,999.72	AGL SA	TORRA1	Energy	\$9,999.72	0.11	\$1,052.57
		AGL SA	TORRA3	Energy	\$9,999.72	0.11	\$1,052.57
		AGL SA	TORRB1	Energy	\$9,999.72	0.20	\$1,973.64
		AGL SA	TORRB2	Energy	\$9,999.72	0.20	\$1,973.64
		AGL SA	TORRB3	Energy	\$9,999.72	0.20	\$1,973.64
		AGL SA	TORRB4	Energy	\$9,999.72	0.20	\$1,973.64
<b>Spot price</b>	<b>\$ 9999.72/MWh</b>						

**Monday 18 February – South Australia – 4.30 pm**

<b>Time</b>	<b>Dispatch price</b>	<b>Participant</b>	<b>Unit</b>	<b>Service</b>	<b>Offer price</b>	<b>Marginal change</b>	<b>Contribution</b>
16:05	\$9,999.72	AGL SA	TORRA1	Energy	\$9,999.72	0.11	\$1,052.57
		AGL SA	TORRA3	Energy	\$9,999.72	0.11	\$1,052.57
		AGL SA	TORRB1	Energy	\$9,999.72	0.20	\$1,973.64
		AGL SA	TORRB2	Energy	\$9,999.72	0.20	\$1,973.64
		AGL SA	TORRB3	Energy	\$9,999.72	0.20	\$1,973.64
		AGL SA	TORRB4	Energy	\$9,999.72	0.20	\$1,973.64
16:10	\$9,999.72	AGL SA	TORRA1	Energy	\$9,999.72	0.11	\$1,052.57
		AGL SA	TORRA3	Energy	\$9,999.72	0.11	\$1,052.57
		AGL SA	TORRB1	Energy	\$9,999.72	0.20	\$1,973.64
		AGL SA	TORRB2	Energy	\$9,999.72	0.20	\$1,973.64
		AGL SA	TORRB3	Energy	\$9,999.72	0.20	\$1,973.64
		AGL SA	TORRB4	Energy	\$9,999.72	0.20	\$1,973.64
16:15	\$9,999.72	AGL SA	TORRA1	Energy	\$9,999.72	0.11	\$1,052.57
		AGL SA	TORRA3	Energy	\$9,999.72	0.11	\$1,052.57
		AGL SA	TORRB1	Energy	\$9,999.72	0.20	\$1,973.64
		AGL SA	TORRB2	Energy	\$9,999.72	0.20	\$1,973.64
		AGL SA	TORRB3	Energy	\$9,999.72	0.20	\$1,973.64
		AGL SA	TORRB4	Energy	\$9,999.72	0.20	\$1,973.64
16:20	\$9,999.72	AGL SA	TORRA1	Energy	\$9,999.72	0.11	\$1,052.57
		AGL SA	TORRA3	Energy	\$9,999.72	0.11	\$1,052.57
		AGL SA	TORRB1	Energy	\$9,999.72	0.20	\$1,973.64
		AGL SA	TORRB2	Energy	\$9,999.72	0.20	\$1,973.64
		AGL SA	TORRB3	Energy	\$9,999.72	0.20	\$1,973.64
		AGL SA	TORRB4	Energy	\$9,999.72	0.20	\$1,973.64
16:25	\$9,999.72	AGL SA	TORRA1	Energy	\$9,999.72	0.11	\$1,052.57
		AGL SA	TORRA3	Energy	\$9,999.72	0.11	\$1,052.57
		AGL SA	TORRB1	Energy	\$9,999.72	0.20	\$1,973.64
		AGL SA	TORRB2	Energy	\$9,999.72	0.20	\$1,973.64
		AGL SA	TORRB3	Energy	\$9,999.72	0.20	\$1,973.64
		AGL SA	TORRB4	Energy	\$9,999.72	0.20	\$1,973.64
16:30	\$9,999.72	AGL SA	TORRA1	Energy	\$9,999.72	0.11	\$1,052.57
		AGL SA	TORRA3	Energy	\$9,999.72	0.11	\$1,052.57
		AGL SA	TORRB1	Energy	\$9,999.72	0.20	\$1,973.64
		AGL SA	TORRB2	Energy	\$9,999.72	0.20	\$1,973.64
		AGL SA	TORRB3	Energy	\$9,999.72	0.20	\$1,973.64
		AGL SA	TORRB4	Energy	\$9,999.72	0.20	\$1,973.64
<b>Spot price</b>	<b>\$ 9999.72/MWh</b>						

## Monday 18 February – South Australia – 5 pm

Time	Dispatch price	Participant	Unit	Service	Offer price	Marginal change	Contribution
16:35	\$9,999.72	AGL SA	TORRA1	Energy	\$9,999.72	0.11	\$1,052.57
		AGL SA	TORRA3	Energy	\$9,999.72	0.11	\$1,052.57
		AGL SA	TORRB1	Energy	\$9,999.72	0.20	\$1,973.64
		AGL SA	TORRB2	Energy	\$9,999.72	0.20	\$1,973.64
		AGL SA	TORRB3	Energy	\$9,999.72	0.20	\$1,973.64
		AGL SA	TORRB4	Energy	\$9,999.72	0.20	\$1,973.64
16:40	\$9,999.72	AGL SA	TORRA1	Energy	\$9,999.72	0.11	\$1,052.57
		AGL SA	TORRA3	Energy	\$9,999.72	0.11	\$1,052.57
		AGL SA	TORRB1	Energy	\$9,999.72	0.20	\$1,973.64
		AGL SA	TORRB2	Energy	\$9,999.72	0.20	\$1,973.64
		AGL SA	TORRB3	Energy	\$9,999.72	0.20	\$1,973.64
		AGL SA	TORRB4	Energy	\$9,999.72	0.20	\$1,973.64
16:45	\$9,999.72	AGL SA	TORRA1	Energy	\$9,999.72	0.11	\$1,052.57
		AGL SA	TORRA3	Energy	\$9,999.72	0.11	\$1,052.57
		AGL SA	TORRB1	Energy	\$9,999.72	0.20	\$1,973.64
		AGL SA	TORRB2	Energy	\$9,999.72	0.20	\$1,973.64
		AGL SA	TORRB3	Energy	\$9,999.72	0.20	\$1,973.64
		AGL SA	TORRB4	Energy	\$9,999.72	0.20	\$1,973.64
16:50	\$9,999.72	AGL SA	TORRA1	Energy	\$9,999.72	0.11	\$1,052.57
		AGL SA	TORRA3	Energy	\$9,999.72	0.11	\$1,052.57
		AGL SA	TORRB1	Energy	\$9,999.72	0.20	\$1,973.64
		AGL SA	TORRB2	Energy	\$9,999.72	0.20	\$1,973.64
		AGL SA	TORRB3	Energy	\$9,999.72	0.20	\$1,973.64
		AGL SA	TORRB4	Energy	\$9,999.72	0.20	\$1,973.64
16:55	\$9,999.72	AGL SA	TORRA1	Energy	\$9,999.72	0.11	\$1,052.57
		AGL SA	TORRA3	Energy	\$9,999.72	0.11	\$1,052.57
		AGL SA	TORRB1	Energy	\$9,999.72	0.20	\$1,973.64
		AGL SA	TORRB2	Energy	\$9,999.72	0.20	\$1,973.64
		AGL SA	TORRB3	Energy	\$9,999.72	0.20	\$1,973.64
		AGL SA	TORRB4	Energy	\$9,999.72	0.20	\$1,973.64
17:00	\$9,999.72	AGL SA	TORRA1	Energy	\$9,999.72	0.11	\$1,052.57
		AGL SA	TORRA3	Energy	\$9,999.72	0.11	\$1,052.57
		AGL SA	TORRB1	Energy	\$9,999.72	0.20	\$1,973.64
		AGL SA	TORRB2	Energy	\$9,999.72	0.20	\$1,973.64
		AGL SA	TORRB3	Energy	\$9,999.72	0.20	\$1,973.64
		AGL SA	TORRB4	Energy	\$9,999.72	0.20	\$1,973.64
<b>Spot price</b>	<b>\$ 9999.72/MWh</b>						

**Monday 18 February – South Australia – 5.30 pm**

<b>Time</b>	<b>Dispatch price</b>	<b>Participant</b>	<b>Unit</b>	<b>Service</b>	<b>Offer price</b>	<b>Marginal change</b>	<b>Contribution</b>
17:05	\$9,999.72	AGL SA	TORRA1	Energy	\$9,999.72	0.11	\$1,052.57
		AGL SA	TORRA3	Energy	\$9,999.72	0.11	\$1,052.57
		AGL SA	TORRB1	Energy	\$9,999.72	0.20	\$1,973.64
		AGL SA	TORRB2	Energy	\$9,999.72	0.20	\$1,973.64
		AGL SA	TORRB3	Energy	\$9,999.72	0.20	\$1,973.64
		AGL SA	TORRB4	Energy	\$9,999.72	0.20	\$1,973.64
17:10	\$9,999.72	AGL SA	TORRA1	Energy	\$9,999.72	0.11	\$1,052.57
		AGL SA	TORRA3	Energy	\$9,999.72	0.11	\$1,052.57
		AGL SA	TORRB1	Energy	\$9,999.72	0.20	\$1,973.64
		AGL SA	TORRB2	Energy	\$9,999.72	0.20	\$1,973.64
		AGL SA	TORRB3	Energy	\$9,999.72	0.20	\$1,973.64
		AGL SA	TORRB4	Energy	\$9,999.72	0.20	\$1,973.64
17:15	\$9,999.72	AGL SA	TORRA1	Energy	\$9,999.72	0.11	\$1,052.57
		AGL SA	TORRA3	Energy	\$9,999.72	0.11	\$1,052.57
		AGL SA	TORRB1	Energy	\$9,999.72	0.20	\$1,973.64
		AGL SA	TORRB2	Energy	\$9,999.72	0.20	\$1,973.64
		AGL SA	TORRB3	Energy	\$9,999.72	0.20	\$1,973.64
		AGL SA	TORRB4	Energy	\$9,999.72	0.20	\$1,973.64
17:20	\$9,999.72	AGL SA	TORRA1	Energy	\$9,999.72	0.11	\$1,052.57
		AGL SA	TORRA3	Energy	\$9,999.72	0.11	\$1,052.57
		AGL SA	TORRB1	Energy	\$9,999.72	0.20	\$1,973.64
		AGL SA	TORRB2	Energy	\$9,999.72	0.20	\$1,973.64
		AGL SA	TORRB3	Energy	\$9,999.72	0.20	\$1,973.64
		AGL SA	TORRB4	Energy	\$9,999.72	0.20	\$1,973.64
17:25	\$9,999.72	AGL SA	TORRA1	Energy	\$9,999.72	0.11	\$1,052.57
		AGL SA	TORRA3	Energy	\$9,999.72	0.11	\$1,052.57
		AGL SA	TORRB1	Energy	\$9,999.72	0.20	\$1,973.64
		AGL SA	TORRB2	Energy	\$9,999.72	0.20	\$1,973.64
		AGL SA	TORRB3	Energy	\$9,999.72	0.20	\$1,973.64
		AGL SA	TORRB4	Energy	\$9,999.72	0.20	\$1,973.64
17:30	\$9,999.72	AGL SA	TORRA1	Energy	\$9,999.72	0.11	\$1,052.57
		AGL SA	TORRA3	Energy	\$9,999.72	0.11	\$1,052.57
		AGL SA	TORRB1	Energy	\$9,999.72	0.20	\$1,973.64
		AGL SA	TORRB2	Energy	\$9,999.72	0.20	\$1,973.64
		AGL SA	TORRB3	Energy	\$9,999.72	0.20	\$1,973.64
		AGL SA	TORRB4	Energy	\$9,999.72	0.20	\$1,973.64
<b>Spot price</b>	<b>\$ 9999.72/MWh</b>						

## Monday 18 February – South Australia – 6 pm

Time	Dispatch price	Participant	Unit	Service	Offer price	Marginal change	Contribution
17:35	\$9,999.72	AGL SA	TORRA1	Energy	\$9,999.72	0.11	\$1,052.57
		AGL SA	TORRA3	Energy	\$9,999.72	0.11	\$1,052.57
		AGL SA	TORRB1	Energy	\$9,999.72	0.20	\$1,973.64
		AGL SA	TORRB2	Energy	\$9,999.72	0.20	\$1,973.64
		AGL SA	TORRB3	Energy	\$9,999.72	0.20	\$1,973.64
		AGL SA	TORRB4	Energy	\$9,999.72	0.20	\$1,973.64
17:40	\$9,999.72	AGL SA	TORRA1	Energy	\$9,999.72	0.11	\$1,052.57
		AGL SA	TORRA3	Energy	\$9,999.72	0.11	\$1,052.57
		AGL SA	TORRB1	Energy	\$9,999.72	0.20	\$1,973.64
		AGL SA	TORRB2	Energy	\$9,999.72	0.20	\$1,973.64
		AGL SA	TORRB3	Energy	\$9,999.72	0.20	\$1,973.64
		AGL SA	TORRB4	Energy	\$9,999.72	0.20	\$1,973.64
17:45	\$9,999.72	AGL SA	TORRA1	Energy	\$9,999.72	0.11	\$1,052.57
		AGL SA	TORRA3	Energy	\$9,999.72	0.11	\$1,052.57
		AGL SA	TORRB1	Energy	\$9,999.72	0.20	\$1,973.64
		AGL SA	TORRB2	Energy	\$9,999.72	0.20	\$1,973.64
		AGL SA	TORRB3	Energy	\$9,999.72	0.20	\$1,973.64
		AGL SA	TORRB4	Energy	\$9,999.72	0.20	\$1,973.64
17:50	\$9,999.72	AGL SA	TORRA1	Energy	\$9,999.72	0.11	\$1,052.57
		AGL SA	TORRA3	Energy	\$9,999.72	0.11	\$1,052.57
		AGL SA	TORRB1	Energy	\$9,999.72	0.20	\$1,973.64
		AGL SA	TORRB2	Energy	\$9,999.72	0.20	\$1,973.64
		AGL SA	TORRB3	Energy	\$9,999.72	0.20	\$1,973.64
		AGL SA	TORRB4	Energy	\$9,999.72	0.20	\$1,973.64
17:55	\$9,999.72	AGL SA	TORRA1	Energy	\$9,999.72	0.11	\$1,052.57
		AGL SA	TORRA3	Energy	\$9,999.72	0.11	\$1,052.57
		AGL SA	TORRB1	Energy	\$9,999.72	0.20	\$1,973.64
		AGL SA	TORRB2	Energy	\$9,999.72	0.20	\$1,973.64
		AGL SA	TORRB3	Energy	\$9,999.72	0.20	\$1,973.64
		AGL SA	TORRB4	Energy	\$9,999.72	0.20	\$1,973.64
18:00	\$9,999.72	AGL SA	TORRA1	Energy	\$9,999.72	0.11	\$1,052.57
		AGL SA	TORRA3	Energy	\$9,999.72	0.11	\$1,052.57
		AGL SA	TORRB1	Energy	\$9,999.72	0.20	\$1,973.64
		AGL SA	TORRB2	Energy	\$9,999.72	0.20	\$1,973.64
		AGL SA	TORRB3	Energy	\$9,999.72	0.20	\$1,973.64
		AGL SA	TORRB4	Energy	\$9,999.72	0.20	\$1,973.64
<b>Spot price</b>	<b>\$ 9999.72/MWh</b>						



**Monday 18 February – South Australia – 6.30 pm**

<b>Time</b>	<b>Dispatch price</b>	<b>Participant</b>	<b>Unit</b>	<b>Service</b>	<b>Offer price</b>	<b>Marginal change</b>	<b>Contribution</b>
18:05	\$9,999.72	AGL SA	TORRA1	Energy	\$9,999.72	0.11	\$1,052.57
		AGL SA	TORRA3	Energy	\$9,999.72	0.11	\$1,052.57
		AGL SA	TORRB1	Energy	\$9,999.72	0.20	\$1,973.64
		AGL SA	TORRB2	Energy	\$9,999.72	0.20	\$1,973.64
		AGL SA	TORRB3	Energy	\$9,999.72	0.20	\$1,973.64
		AGL SA	TORRB4	Energy	\$9,999.72	0.20	\$1,973.64
18:10	\$9,999.72	AGL SA	TORRA1	Energy	\$9,999.72	0.11	\$1,052.57
		AGL SA	TORRA3	Energy	\$9,999.72	0.11	\$1,052.57
		AGL SA	TORRB1	Energy	\$9,999.72	0.20	\$1,973.64
		AGL SA	TORRB2	Energy	\$9,999.72	0.20	\$1,973.64
		AGL SA	TORRB3	Energy	\$9,999.72	0.20	\$1,973.64
		AGL SA	TORRB4	Energy	\$9,999.72	0.20	\$1,973.64
18:15	\$9,999.72	AGL SA	TORRA1	Energy	\$9,999.72	0.11	\$1,052.57
		AGL SA	TORRA3	Energy	\$9,999.72	0.11	\$1,052.57
		AGL SA	TORRB1	Energy	\$9,999.72	0.20	\$1,973.64
		AGL SA	TORRB2	Energy	\$9,999.72	0.20	\$1,973.64
		AGL SA	TORRB3	Energy	\$9,999.72	0.20	\$1,973.64
		AGL SA	TORRB4	Energy	\$9,999.72	0.20	\$1,973.64
18:20	\$9,999.72	AGL SA	TORRA1	Energy	\$9,999.72	0.11	\$1,052.57
		AGL SA	TORRA3	Energy	\$9,999.72	0.11	\$1,052.57
		AGL SA	TORRB1	Energy	\$9,999.72	0.20	\$1,973.64
		AGL SA	TORRB2	Energy	\$9,999.72	0.20	\$1,973.64
		AGL SA	TORRB3	Energy	\$9,999.72	0.20	\$1,973.64
		AGL SA	TORRB4	Energy	\$9,999.72	0.20	\$1,973.64
18:25	\$9,999.72	AGL SA	TORRA1	Energy	\$9,999.72	0.11	\$1,052.57
		AGL SA	TORRA3	Energy	\$9,999.72	0.11	\$1,052.57
		AGL SA	TORRB1	Energy	\$9,999.72	0.20	\$1,973.64
		AGL SA	TORRB2	Energy	\$9,999.72	0.20	\$1,973.64
		AGL SA	TORRB3	Energy	\$9,999.72	0.20	\$1,973.64
		AGL SA	TORRB4	Energy	\$9,999.72	0.20	\$1,973.64
18:30	\$9,950.76	AGL SA	TORRA3	Energy	\$9,950.76	1.00	\$9,950.76
18:05	\$9,999.72	AGL SA	TORRA1	Energy	\$9,999.72	0.11	\$1,052.57
		AGL SA	TORRA3	Energy	\$9,999.72	0.11	\$1,052.57
		AGL SA	TORRB1	Energy	\$9,999.72	0.20	\$1,973.64
		AGL SA	TORRB2	Energy	\$9,999.72	0.20	\$1,973.64
		AGL SA	TORRB3	Energy	\$9,999.72	0.20	\$1,973.64
<b>Spot price</b>	<b>\$ 9991.56/MWh</b>						

**Tuesday 19 February – South Australia – 6 pm**

<b>Time</b>	<b>Dispatch price</b>	<b>Participant</b>	<b>Unit</b>	<b>Service</b>	<b>Offer price</b>	<b>Marginal change</b>	<b>Contribution</b>
17:35	\$59.61	Ecogen Energy	JLB02	Energy	\$55.76	1.07	\$59.61
17:40	\$464.77	AGL Hydro	MCKAY1	Energy	\$82.77	1.30091	\$107.67632
		Snowy Hydro	TUMUT3	Energy	\$35.47	0.27857	\$9.8808779
		Flinders Power	NPS1	Energy	-\$989.08	-0.35151	\$347.67151
		CS Energy	SWAN_E	Lower reg	\$1.4	-0.17575	-\$0.24605
		Flinders Power	NPS1	Lower reg	\$0	0.17575	\$0
		Stanwell	GSTONE3	Raise 6 sec	\$0.95	-0.08813	\$-\$0.0837235
		Flinders Power	NPS1	Raise 6 sec	\$0	0.08813	\$0
		Stanwell	GSTONE2	Raise reg	\$0.94	-0.1352	-\$0.127088
		Flinders Power	NPS1	Raise reg	\$0	0.1352	\$0
17:45	\$8,999.72	AGL SA	TORRA3	Energy	\$8,999.72	0.50	\$4,499.86
		AGL SA	TORRA4	Energy	\$8,999.72	0.50	\$4,499.86
17:50	\$8,999.72	AGL SA	TORRA3	Energy	\$8,999.72	0.11	\$987.81
		AGL SA	TORRA4	Energy	\$8,999.72	0.11	\$987.81
		AGL SA	TORRB1	Energy	\$8,999.72	0.20	\$1,756.03
		AGL SA	TORRB2	Energy	\$8,999.72	0.20	\$1,756.03
		AGL SA	TORRB3	Energy	\$8,999.72	0.20	\$1,756.03
		AGL SA	TORRB4	Energy	\$8,999.72	0.20	\$1,756.03
17:55	\$8,999.72	AGL SA	TORRA3	Energy	\$8,999.72	0.11	\$987.81
		AGL SA	TORRA4	Energy	\$8,999.72	0.11	\$987.81
		AGL SA	TORRB1	Energy	\$8,999.72	0.20	\$1,756.03
		AGL SA	TORRB2	Energy	\$8,999.72	0.20	\$1,756.03
		AGL SA	TORRB3	Energy	\$8,999.72	0.20	\$1,756.03
		AGL SA	TORRB4	Energy	\$8,999.72	0.20	\$1,756.03
18:00	\$8,999.72	AGL SA	TORRA3	Energy	\$8,999.72	0.11	\$987.81
		AGL SA	TORRA4	Energy	\$8,999.72	0.11	\$987.81
		AGL SA	TORRB1	Energy	\$8,999.72	0.20	\$1,756.03
		AGL SA	TORRB2	Energy	\$8,999.72	0.20	\$1,756.03
		AGL SA	TORRB3	Energy	\$8,999.72	0.20	\$1,756.03
		AGL SA	TORRB4	Energy	\$8,999.72	0.20	\$1,756.03
<b>Spot price</b>	<b>\$ 6087.21/MWh</b>						