

# Spot prices greater than \$5000/MWh



AUSTRALIAN ENERGY  
REGULATOR

South Australia and Victoria:  
28 and 29 January 2009

## ***Introduction***

The AER is required to publish a report covering the circumstances in which the spot price exceeds \$5000/MWh, pursuant to clause 3.13.7 (d) of the Rules. That report should:

- describe significant factors contributing to the spot price exceeding \$5000/MWh, including withdrawal of generation capacity and network availability;
- assess whether rebidding pursuant to clause 3.8.22 contributed to the spot price exceeding \$5000/MWh;
- identify the marginal scheduled generating units; and
- identify all units with offers for the trading interval equal to or greater than \$5000/MWh and compare these dispatch offers to relevant dispatch offers in previous trading intervals.

## **Summary/assessment**

The spot price exceeded \$5000/MWh for 12 trading intervals over Wednesday 28 and Thursday 29 January 2009 in Victoria and in South Australia. Extreme weather conditions in South Australia and Victoria resulted in record demand in those regions.

On Wednesday in South Australia record demand of 3317 MW led to high-priced capacity being dispatched at AGL's Torrens Island power station. Up to 826 MW (two thirds of the total capacity) was offered at the price cap through initial offers. Dispatch of this AGL capacity set the price to the price cap for the period between 2.35 pm and 5 pm. In Victoria record demand of 10 072 MW combined with the unplanned shutdown of a 200 MW Hazelwood unit saw the spot price reached \$6035/MWh at 3.30 pm<sup>1</sup>.

On Thursday, prices in South Australia and Victoria were aligned. An unplanned outage of transmission equipment in the Latrobe Valley from 1.30 am to 9 am constrained off significant quantities of low-priced generation in the Latrobe Valley causing the price to reach the cap for one hour from 8 am.

On Thursday afternoon an unplanned outage of the Basslink interconnector occurred. Demand in Victoria reached a new record of 10 445 MW and in South Australia demand was at near-record levels. The record levels of demand combined with reduced import capability resulted in NEMMCO issuing instructions to interrupt customer load in Victoria and South Australia. These interruptions occurred in Victoria from 12.40 pm to 3.20 pm and in South Australia from 1.50 pm to 3.20 pm. The maximum load instructed to be interrupted in Victoria was 280 MW and in South Australia was 140 MW. At 2.00 pm the Basslink interconnector tripped, while exporting around 400 MW to Victoria. As a result energy prices were set to the price cap until 3.20 pm in both regions when load was able to be restored.

---

<sup>1</sup> Note that all times quoted are market time (EST)

The sustained high prices led to the application of the administered price cap from Thursday afternoon in both regions. The administered price cap arrangements, which caps spot prices to \$300/MWh, applied in South Australia from 3 pm until Saturday 7 February, and in Victoria from 5 pm until Friday 6 February.

On Thursday a record National Electricity Market (NEM) demand of 35 550 MW led to high prices in all regions. Spot prices exceeded \$5000/MWh in Tasmania, which is covered in a separate *Spot prices greater than \$5000/MWh report*.

In South Australia these high priced events combined with the 13 January 2009 event, when spot market prices in South Australia exceeded \$7500/MWh on eight occasions from 2 pm to 5.30 pm, caused the average electricity spot market price in January to increase to \$374/MWh, the highest-ever monthly price since the market started in 1998.

A full listing of the price and demand outcomes for the 12 trading intervals in each region is attached at **Appendix A**. The closing bids for all participants in South Australia and Victoria with capacity priced at or above \$5000/MWh during the time of high prices are presented in **Appendix B**. A full analysis of the generators involved in setting price for the 12 trading intervals in each region is attached at **Appendix C**.

Given the significance of these loss of load events and its implications on the security and reliability of supply and pricing outcomes, the AER is also undertaking a broader and more detailed investigation in order to determine whether registered participants and NEMMCO complied with the National Electricity Rules. The investigation is focussing on:

- the obligations of participants and NEMMCO with respect to power system security;
- the use of power system security directions by NEMMCO;
- market pricing outcomes, including the overriding of the price by NEMMCO, and pricing during the period of NEMMCO directions;
- market dispatch, including the appropriate use of network constraints;
- compliance by participants with dispatch instructions;
- the technical performance of generators;
- the technical performance of the transmission and distribution network;
- the performance of distribution businesses under state licences and codes;
- the frequency control ancillary service markets; and
- the performance of ancillary service providers.

### **Actual and forecast demand**

Temperatures in South Australia exceeded 40 degrees for six days in a row from 27 January to 1 February. The highest temperature during this period was 45.7 degrees on Wednesday 28 January. A new record demand of 3317 MW was reached in South Australia on Wednesday 28 January. The previous record demand of 3077 MW occurred on 17 March 2008.

Temperatures in Victoria exceeded 40 degrees for three days in a row from 28 January to 30 January inclusive. The highest temperature during this period was 45.1 degrees on Friday 30 January. The previous record demand in Victoria of 9776 MW set on 17 March 2008 was exceeded twice; on 28 January demand reached 10 072 MW and on 29 January demand reached 10 445 MW.

NEM demand reached a new record of 34 907 MW on Wednesday 28 January before reaching a further record of 35 550 MW on Thursday 29 January. The demand exceeded the previous highest summer and winter demands of 31 990 MW (January 2008) and 34 422 MW (July 2008), respectively.

### **Price outcomes**

On Wednesday 28 January the spot price in South Australia reached the price cap of \$10 000/MWh five times in total (for the 3 pm to 5 pm trading intervals). All other spot prices were below \$5000/MWh on this day in South Australia.

The spot price in Victoria on Wednesday 28 January exceeded \$5000/MWh once, reaching \$6036/MWh at 3.30 pm.

On Thursday 29 January the spot price in South Australia exceeded \$5000/MWh for seven trading intervals throughout the day, reaching the price cap for the 2 pm trading interval.

On Thursday 29 January the spot price in Victoria exceeded \$5000/MWh for 11 trading intervals (8.30 am to 9 am and midday to 4 pm), reaching the price cap at 3 pm.

The cumulative price for the previous 336 trading intervals exceeded the cumulative price threshold (CPT) of \$150 000 in South Australia and Victoria on Thursday 29 January at 3 pm and 5 pm respectively. As required under the National Electricity Rules, the spot price was then capped at \$300/MWh (the administered price cap).

In South Australia, the cumulative price reached a maximum of around \$460 000 (on 3 February) and in Victoria the cumulative price reached a maximum of \$280 000 (also on 3 February), compared to the CPT of \$150 000.

### **Generator offers and rebidding**

#### *28 January*

During the time of high prices all generation in South Australia was available apart from four units at Torrens Island. Up to 826 MW (two thirds of the total capacity) of Torrens Island was offered at the price cap through initial offers. Dispatch of this capacity set the price to the price cap for the period between 2.35 pm and 5 pm.

At 2.48 pm AGL reduced the available capacity at Torrens Island A unit four and B unit two by a total of 89 MW – for the 3 pm and 3.30 pm trading intervals (all of this capacity was priced above \$9000/MWh). The reason given was “Fuel limits::change in fuel supply (Oil)”.

There were no other significant rebids in the South Australia region.

At around 2 pm Hazelwood unit four tripped from full load, reducing the available generation capacity by 215 MW (the majority of this capacity was priced below zero).

Throughout the day Snowy Hydro reduced the available capacity of Valley Power by 120 MW. The reasons given were “Amb temp output correction:decrease max avail” and “Plant outage:decrease max avail”.

Over a number of rebids TRUenergy reduced the available capacity at Yallourn by up to 260 MW (all of this capacity was priced below \$5/MWh). The reasons given were “Capacity

adjustment due to plant conditions”, “Plant conditions – adjust availability” and “Plant conditions – limit lifted”.

There were no other significant rebids in the Victoria region.

*29 January*

At 10.06 am the return of Torrens Island B unit four was delayed, reducing the available capacity by up to 200 MW for the 11.30 am to 1.30 pm trading intervals. The reason given was "Plant limitations:adj to unit loading". At 1.15 pm AGL rebid 170 MW of capacity at Torrens Island B units from prices below \$105/MWh to above \$9000/MWh. The reason given was “Interconnector constraint: negative residues”.

There were no other significant rebids in the South Australia region.

Over two rebids at 7.40 am and 8.42 am Vic Power Trader reduced the available capacity of the Angelsea Power Station by 155 MW to zero (all of this capacity had been priced at the price floor). The reason given was “SO<sub>2</sub>”. It returned to full capacity by 3.30 pm

At 8.22 am International Power reduced the available capacity of Hazelwood unit four by 210 MW to zero due to problems with returning the plant to service (all capacity had been priced below \$15/MWh).

Over a number of rebids TRUenergy reduced the available capacity at Yallourn by up to 205 MW (all of this capacity was priced below \$5/MWh). The reasons given were “Capacity adjustment due to plant conditions” and “Plant conditions – adjust availability”.

Over several rebids from 9.22 am, Ecogen reduced available capacity at Jeeralang by a total of 116 MW (all of this capacity was priced below \$65/MWh). The rebid reason was "Capacity adj due to ambient temperature".

**Australian Energy Regulator**

**February 2009**

## Appendix A - Actual and forecast price and demand

**Figure A1** identifies the trading intervals in which the spot price exceeded \$5000/MWh in South Australia. **Figure A2** identifies the trading intervals in which the spot price exceeded \$5000/MWh in Victoria. The spot price and demand for each trading interval and the forecast price and demand forecast error four hours ahead of dispatch is detailed.

**Figure A1: South Australia spot price and demand**

Time	Spot price (\$)	Actual demand (MW)	4 hr ahead forecast spot price (\$)	4 hr ahead forecast demand error (MW)
Wednesday, 28 January 2009				
3:00 PM	10 000	3255	10 000	2
3:30 PM	10 000	3290	10 000	14
4:00 PM	10 000	3318	10 000	20
4:30 PM	10 000	3308	10 000	5
5:00 PM	10 000	3288	10 000	1
Thursday, 29 January 2009				
8:30 AM	8266	2625	124	131
9:00 AM	9398	2724	174	136
12:00 PM	5042	3053	10 000	34
12:30 PM	5594	3116	10 000	-102
2:00 PM	10 000	3251	316	-54
2:30 PM	9471	3158	355	-173
3:00 PM	9733	3076	8899	-283

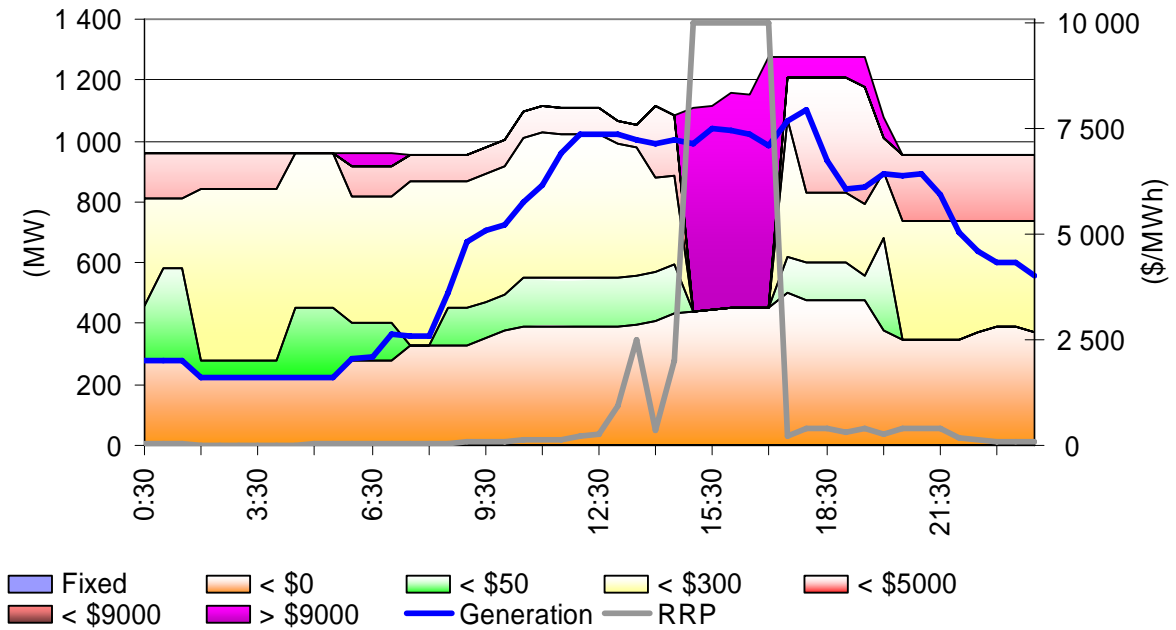
**Figure A2: Victoria spot price and demand**

Time	Spot price (\$)	Actual demand (MW)	4 hr ahead forecast spot price (\$)	4 hr ahead forecast demand error (MW)
Wednesday, 28 January 2009				
3:30 PM	6036	10 060	3136	208
Thursday, 29 January 2009				
8:30 AM	9511	8894	121	967
9:00 AM	10 000	9142	163	903
12:00 PM	5099	10 303	10 000	349
12:30 PM	5885	10 445	10 000	317
1:00 PM	9898	10 309	10 000	778
1:30 PM	9585	10 206	1017	-38
2:00 PM	9358	10 393	306	51
2:30 PM	9501	10 118	342	-175
3:00 PM	10 000	10 120	8350	-196
3:30 PM	8383	10 212	9486	-203
4:00 PM	6872	10 440	10 000	-58

## Appendix B – Closing bids

Figures B1 and B2 highlight the half hour closing bids for power stations in South Australia on 28 and 29 January with significant capacity priced at or above \$5000/MWh during the trading intervals in which the spot price exceeded \$5000/MWh. Figures B3 – B7 show significant capacity above \$5000/MWh in Victoria. It also shows the generation output and the spot price (RRP).

**Figure B1: AGL (SA) Torrens Island closing bid prices, dispatch and spot price on 28 January**



**Figure B2: AGL (SA) Torrens Island closing bid prices, dispatch and spot price on 29 January**

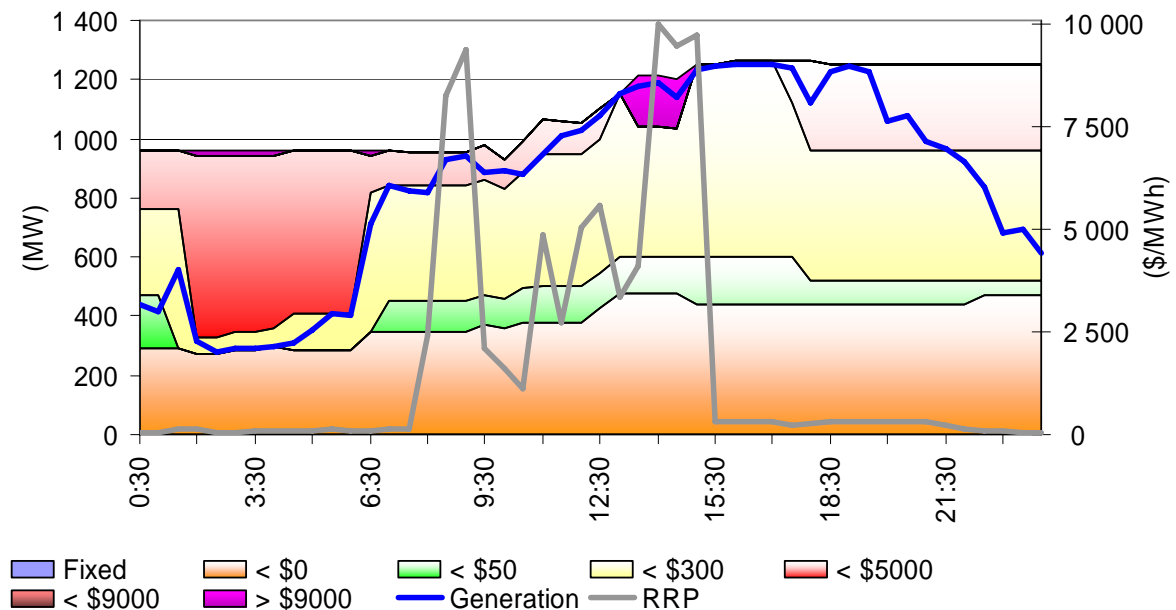


Figure B3: AGL (Vic) closing bid prices, dispatch and spot price on 28 January

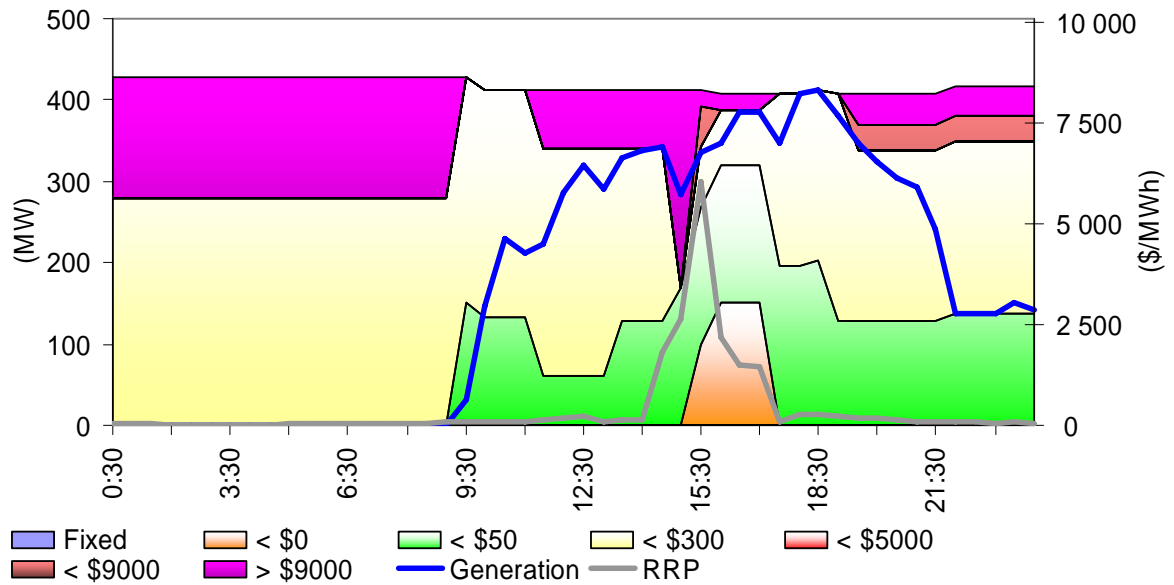


Figure B4: LYMMCO (Vic) closing bid prices, dispatch and spot price on 28 January

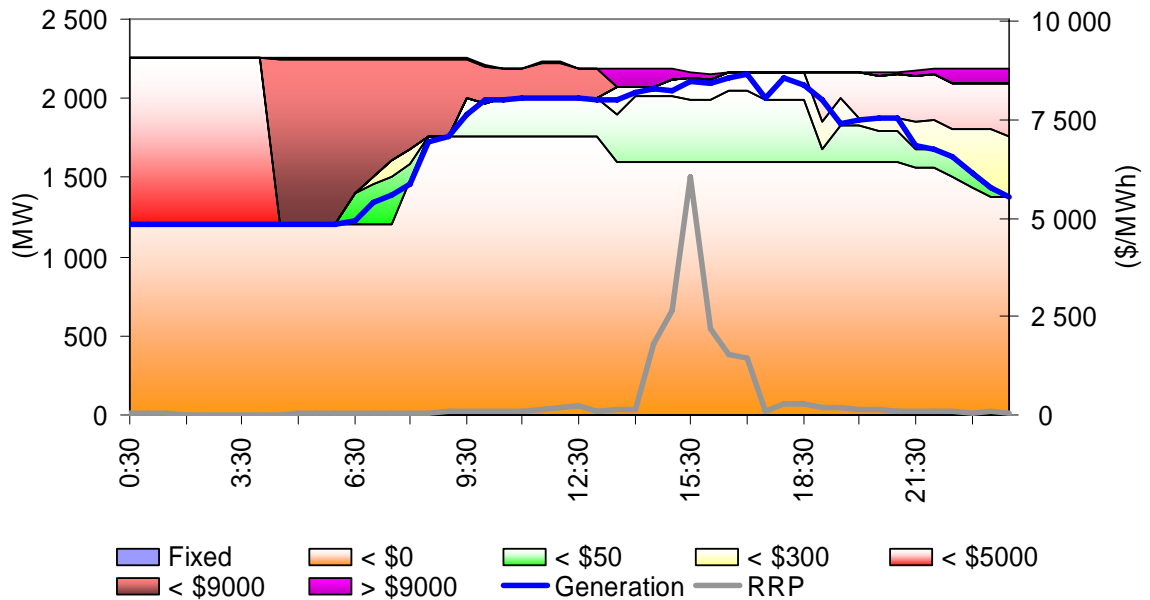


Figure B5: Snowy Hydro (Vic) closing bid prices, dispatch and spot price on 28 January

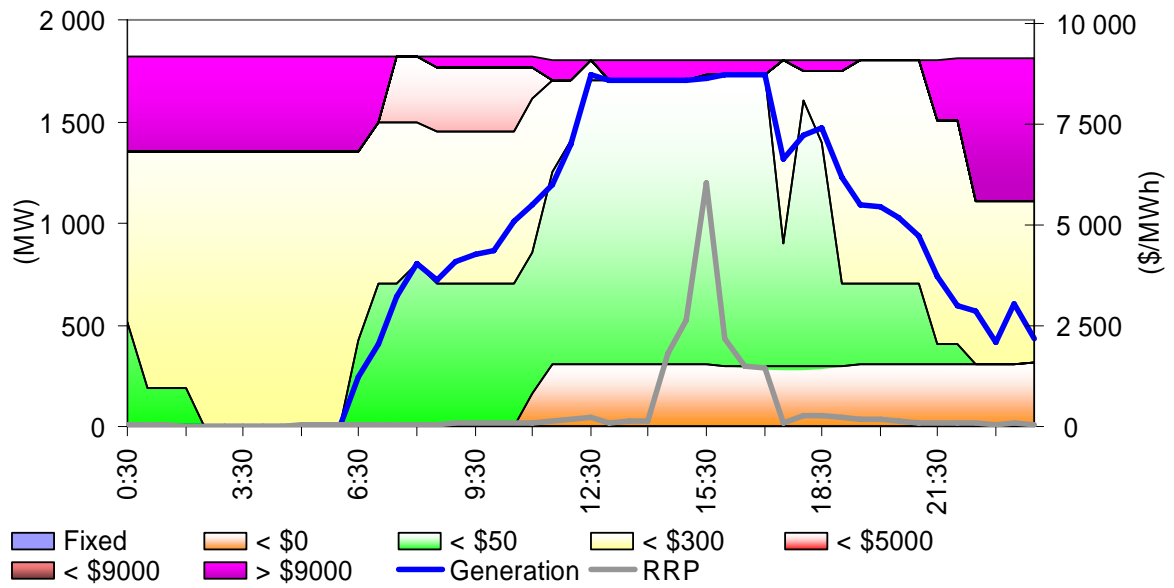


Figure B6: AGL (Vic) closing bid prices, dispatch and spot price on 29 January

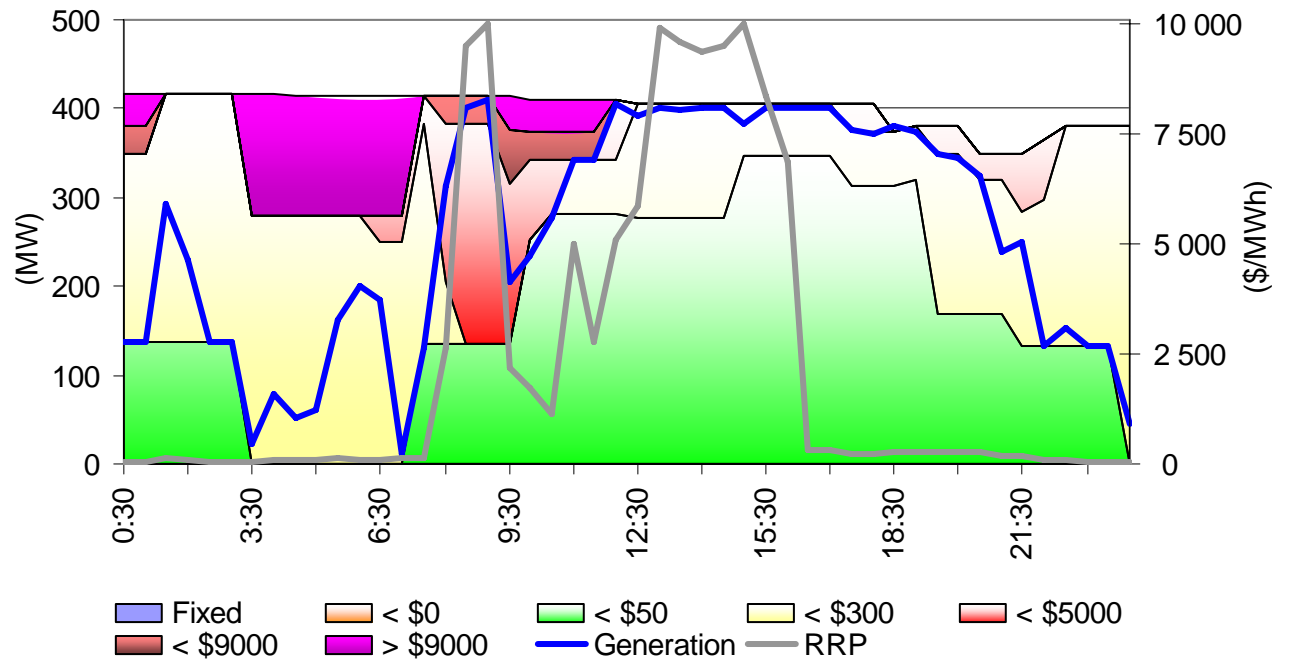
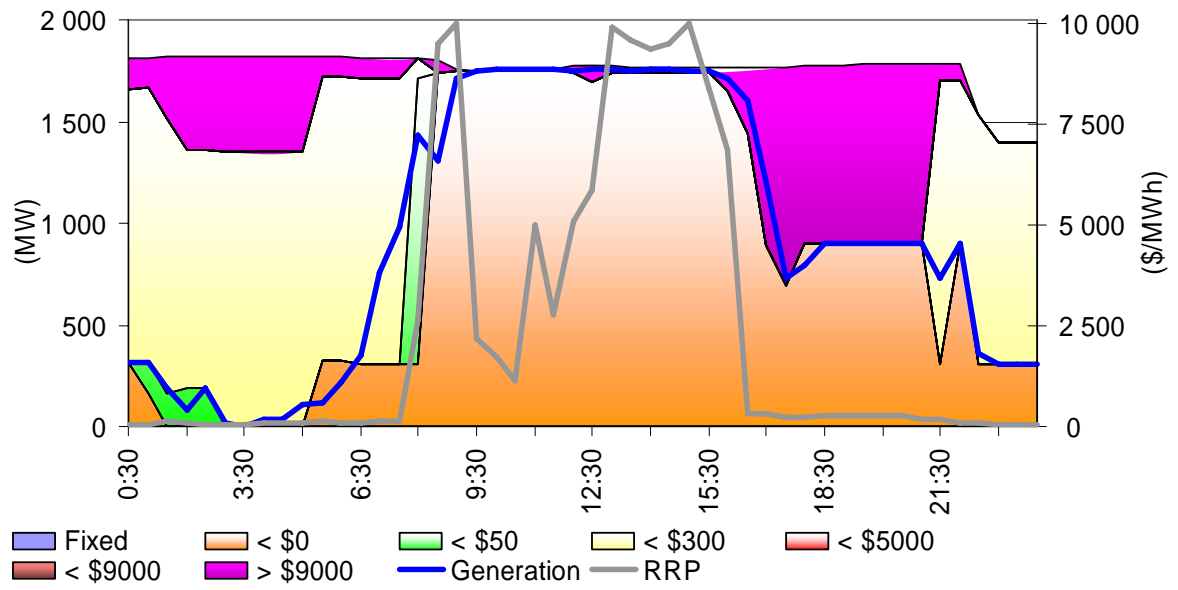




Figure B7: Snowy Hydro (Vic) closing bid prices, dispatch and spot price on 29 January



## Appendix C – Price setters for 28 and 29 January 2009

The following tables identify the trading intervals in which the spot price exceeded \$5000/MWh. Each five minute dispatch interval price and the generating units involved in setting the energy price, as published in the market systems are shown. This information is published by NEMMCO<sup>2</sup>. Also shown is the energy or ancillary service offer price involved in determining the dispatch price together with the quantity of that service and the contribution to the total energy price. The 30-minute spot price is the time weighted average of the six dispatch interval prices.

The spot price in trading intervals with VoLL override in place can be less than \$10 000/MWh due to scaling for inter-regional loss factors.

### Wednesday 28 January – South Australia – 3 pm

Time	Dispatch price	Participant	Unit	Service	Offer price	Marginal change	Contribution
14:35	\$9999.77	AGL SA	TORRA2	Energy	\$9999.77	0.23	\$2285.65
		AGL SA	TORRA3	Energy	\$9999.77	0.23	\$2285.65
		AGL SA	TORRA4	Energy	\$9999.77	0.11	\$1142.87
		AGL SA	TORRB1	Energy	\$9999.77	0.43	\$4285.60
14:40	\$9999.77	AGL SA	TORRA2	Energy	\$9999.77	0.11	\$1111.07
		AGL SA	TORRA4	Energy	\$9999.77	0.06	\$555.59
		AGL SA	TORRB1	Energy	\$9999.77	0.21	\$2083.25
		AGL SA	TORRB2	Energy	\$9999.77	0.21	\$2083.25
		AGL SA	TORRB3	Energy	\$9999.77	0.21	\$2083.25
14:45	\$9999.77	AGL SA	TORRB4	Energy	\$9999.77	0.21	\$2083.25
		AGL SA	TORRA2	Energy	\$9999.77	0.14	\$1403.47
		AGL SA	TORRA4	Energy	\$9999.77	0.07	\$701.78
		AGL SA	TORRB1	Energy	\$9999.77	0.26	\$2631.54
		AGL SA	TORRB3	Energy	\$9999.77	0.26	\$2631.54
14:50	\$9999.77	AGL SA	TORRB4	Energy	\$9999.77	0.26	\$2631.54
		AGL SA	TORRB2	Raise reg	\$0.80	-0.18	-\$0.15
		AGL SA	TORRB3	Raise reg	\$0.80	0.18	\$0.15
		AGL SA	TORRA2	Energy	\$9999.77	0.12	\$1212.07
		AGL SA	TORRA4	Energy	\$9999.77	0.06	\$606.09
		AGL SA	TORRB1	Energy	\$9999.77	0.18	\$1818.16
		AGL SA	TORRB2	Energy	\$9999.77	0.18	\$1818.16
		AGL SA	TORRB3	Energy	\$9999.77	0.23	\$2272.65
14:55	\$9999.77	AGL SA	TORRB4	Energy	\$9999.77	0.23	\$2272.65
		AGL SA	TORRA2	Energy	\$9999.77	0.16	\$1599.96
		AGL SA	TORRB1	Energy	\$9999.77	0.24	\$2399.94
		AGL SA	TORRB3	Energy	\$9999.77	0.30	\$2999.93
15:00	\$9999.77	AGL SA	TORRB4	Energy	\$9999.77	0.30	\$2999.93
		AGL SA	TORRA2	Energy	\$9999.77	0.14	\$1379.27
		AGL SA	TORRA3	Energy	\$9999.77	0.14	\$1379.27
		AGL SA	TORRB1	Energy	\$9999.77	0.21	\$2068.95
		AGL SA	TORRB3	Energy	\$9999.77	0.26	\$2586.14
		AGL SA	TORRB4	Energy	\$9999.77	0.26	\$2586.14
<b>Spot price</b>		<b>\$10 000/MWh</b>					

### Wednesday 28 January – South Australia – 3.30 pm

Time	Dispatch price	Participant	Unit	Service	Offer price	Marginal change	Contribution
15:05	\$9999.77	AGL SA	TORRA2	Energy	\$9999.77	0.14	\$1379.27
		AGL SA	TORRA3	Energy	\$9999.77	0.14	\$1379.27
		AGL SA	TORRB1	Energy	\$9999.77	0.21	\$2068.95
		AGL SA	TORRB3	Energy	\$9999.77	0.26	\$2586.14
		AGL SA	TORRB4	Energy	\$9999.77	0.26	\$2586.14
15:10	\$9999.77	AGL SA	TORRA2	Energy	\$9999.77	0.14	\$1379.27
		AGL SA	TORRA3	Energy	\$9999.77	0.14	\$1379.27
		AGL SA	TORRB1	Energy	\$9999.77	0.21	\$2068.95
		AGL SA	TORRB3	Energy	\$9999.77	0.26	\$2586.14
		AGL SA	TORRB4	Energy	\$9999.77	0.26	\$2586.14
15:15	\$9999.77	AGL SA	TORRA2	Energy	\$9999.77	0.14	\$1379.27
		AGL SA	TORRA3	Energy	\$9999.77	0.14	\$1379.27
		AGL SA	TORRB1	Energy	\$9999.77	0.21	\$2068.95
		AGL SA	TORRB3	Energy	\$9999.77	0.26	\$2586.14
		AGL SA	TORRB4	Energy	\$9999.77	0.26	\$2586.14
15:20	\$9999.77	AGL SA	TORRA2	Energy	\$9999.77	0.17	\$1739.06
		AGL SA	TORRA3	Energy	\$9999.77	0.17	\$1739.06
		AGL SA	TORRB3	Energy	\$9999.77	0.33	\$3260.82
		AGL SA	TORRB4	Energy	\$9999.77	0.33	\$3260.82
		AGL SA	TORRA2	Energy	\$9999.77	0.17	\$1739.06
15:25	\$9999.77	AGL SA	TORRA3	Energy	\$9999.77	0.17	\$1739.06
		AGL SA	TORRB3	Energy	\$9999.77	0.33	\$3260.82
		AGL SA	TORRB4	Energy	\$9999.77	0.33	\$3260.82
		AGL SA	TORRA2	Energy	\$9999.77	0.14	\$1379.27
15:30	\$9999.77	AGL SA	TORRA3	Energy	\$9999.77	0.14	\$1379.27
		AGL SA	TORRB1	Energy	\$9999.77	0.21	\$2068.95
		AGL SA	TORRB3	Energy	\$9999.77	0.26	\$2586.14
		AGL SA	TORRB4	Energy	\$9999.77	0.26	\$2586.14
		AGL SA	TORRA2	Energy	\$9999.77	0.26	\$2586.14
<b>Spot price</b>		<b>\$10 000/MWh</b>					

### Wednesday 28 January – South Australia – 4 pm

Time	Dispatch price	Participant	Unit	Service	Offer price	Marginal change	Contribution
15:35	\$9999.77	AGL SA	TORRA2	Energy	\$9999.77	0.14	\$1379.27
		AGL SA	TORRA3	Energy	\$9999.77	0.14	\$1379.27
		AGL SA	TORRB1	Energy	\$9999.77	0.21	\$2068.95
		AGL SA	TORRB3	Energy	\$9999.77	0.26	\$2586.14
		AGL SA	TORRB4	Energy	\$9999.77	0.26	\$2586.14
15:40	\$9999.77	AGL SA	TORRA2	Energy	\$9999.77	0.14	\$1379.27
		AGL SA	TORRA3	Energy	\$9999.77	0.14	\$1379.27
		AGL SA	TORRB1	Energy	\$9999.77	0.21	\$2068.95
		AGL SA	TORRB3	Energy	\$9999.77	0.26	\$2586.14
		AGL SA	TORRB4	Energy	\$9999.77	0.26	\$2586.14
15:45	\$9999.77	AGL SA	TORRA2	Energy	\$9999.77	0.13	\$1290.27
		AGL SA	TORRA3	Energy	\$9999.77	0.13	\$1290.27
		AGL SA	TORRA4	Energy	\$9999.77	0.06	\$645.19
		AGL SA	TORRB1	Energy	\$9999.77	0.19	\$1935.46
		AGL SA	TORRB3	Energy	\$9999.77	0.24	\$2419.34
		AGL SA	TORRB4	Energy	\$9999.77	0.24	\$2419.34
15:50	\$9999.77	AGL SA	TORRA2	Energy	\$9999.77	0.13	\$1290.27
		AGL SA	TORRA3	Energy	\$9999.77	0.13	\$1290.27
		AGL SA	TORRA4	Energy	\$9999.77	0.06	\$645.19
		AGL SA	TORRB1	Energy	\$9999.77	0.19	\$1935.46
		AGL SA	TORRB3	Energy	\$9999.77	0.24	\$2419.34
		AGL SA	TORRB4	Energy	\$9999.77	0.24	\$2419.34
15:55	\$9999.77	AGL SA	TORRA2	Energy	\$9999.77	0.13	\$1290.27
		AGL SA	TORRA3	Energy	\$9999.77	0.13	\$1290.27
		AGL SA	TORRA4	Energy	\$9999.77	0.06	\$645.19
		AGL SA	TORRB1	Energy	\$9999.77	0.19	\$1935.46
		AGL SA	TORRB3	Energy	\$9999.77	0.24	\$2419.34
		AGL SA	TORRB4	Energy	\$9999.77	0.24	\$2419.34
16:00	\$9999.77	AGL SA	TORRA2	Energy	\$9999.77	0.14	\$1379.27
		AGL SA	TORRA3	Energy	\$9999.77	0.14	\$1379.27
		AGL SA	TORRB1	Energy	\$9999.77	0.21	\$2068.95
		AGL SA	TORRB3	Energy	\$9999.77	0.26	\$2586.14
		AGL SA	TORRB4	Energy	\$9999.77	0.26	\$2586.14
<b>Spot price</b>		<b>\$10 000/MWh</b>					

### Wednesday 28 January – South Australia – 4.30 pm

Time	Dispatch price	Participant	Unit	Service	Offer price	Marginal change	Contribution
16:05	\$9999.77	AGL SA	TORRA3	Energy	\$9999.77	0.16	\$1599.96
		AGL SA	TORRB1	Energy	\$9999.77	0.24	\$2399.94
		AGL SA	TORRB3	Energy	\$9999.77	0.30	\$2999.93
		AGL SA	TORRB4	Energy	\$9999.77	0.30	\$2999.93
16:10	\$9999.77	AGL SA	TORRA3	Energy	\$9999.77	0.15	\$1481.47
		AGL SA	TORRA4	Energy	\$9999.77	0.07	\$740.68
		AGL SA	TORRB1	Energy	\$9999.77	0.22	\$2222.15
		AGL SA	TORRB3	Energy	\$9999.77	0.28	\$2777.74
16:15	\$9999.77	AGL SA	TORRB4	Energy	\$9999.77	0.28	\$2777.74
		AGL SA	TORRA3	Energy	\$9999.77	0.15	\$1481.47
		AGL SA	TORRA4	Energy	\$9999.77	0.07	\$740.68
		AGL SA	TORRB1	Energy	\$9999.77	0.22	\$2222.15
16:20	\$9999.77	AGL SA	TORRB3	Energy	\$9999.77	0.28	\$2777.74
		AGL SA	TORRB4	Energy	\$9999.77	0.28	\$2777.74
		AGL SA	TORRA3	Energy	\$9999.77	0.15	\$1481.47
		AGL SA	TORRA4	Energy	\$9999.77	0.07	\$740.68
16:25	\$9999.77	AGL SA	TORRB1	Energy	\$9999.77	0.22	\$2222.15
		AGL SA	TORRB3	Energy	\$9999.77	0.28	\$2777.74
		AGL SA	TORRB4	Energy	\$9999.77	0.28	\$2777.74
		AGL SA	TORRA3	Energy	\$9999.77	0.15	\$1481.47
16:30	\$9999.77	AGL SA	TORRA4	Energy	\$9999.77	0.07	\$740.68
		AGL SA	TORRB1	Energy	\$9999.77	0.22	\$2222.15
		AGL SA	TORRB3	Energy	\$9999.77	0.28	\$2777.74
		AGL SA	TORRB4	Energy	\$9999.77	0.28	\$2777.74
<b>Spot price</b>		<b>\$10 000/MWh</b>					

### Wednesday 28 January – South Australia – 5 pm

Time	Dispatch price	Participant	Unit	Service	Offer price	Marginal change	Contribution
16:35	\$9999.77	AGL SA	TORRA2	Energy	\$9999.77	0.13	\$1290.27
		AGL SA	TORRA3	Energy	\$9999.77	0.13	\$1290.27
		AGL SA	TORRA4	Energy	\$9999.77	0.06	\$645.19
		AGL SA	TORRB1	Energy	\$9999.77	0.19	\$1935.46
		AGL SA	TORRB3	Energy	\$9999.77	0.24	\$2419.34
		AGL SA	TORRB4	Energy	\$9999.77	0.24	\$2419.34
16:40	\$9999.77	AGL SA	TORRA2	Energy	\$9999.77	0.11	\$1081.08
		AGL SA	TORRA3	Energy	\$9999.77	0.11	\$1081.08
		AGL SA	TORRA4	Energy	\$9999.77	0.05	\$540.49
		AGL SA	TORRB1	Energy	\$9999.77	0.16	\$1621.56
		AGL SA	TORRB2	Energy	\$9999.77	0.16	\$1621.56
		AGL SA	TORRB3	Energy	\$9999.77	0.20	\$2026.95
16:45	\$9999.77	AGL SA	TORRB4	Energy	\$9999.77	0.20	\$2026.95
		AGL SA	TORRA2	Energy	\$9999.77	0.11	\$1081.08
		AGL SA	TORRA3	Energy	\$9999.77	0.11	\$1081.08
		AGL SA	TORRA4	Energy	\$9999.77	0.05	\$540.49
		AGL SA	TORRB1	Energy	\$9999.77	0.16	\$1621.56
		AGL SA	TORRB2	Energy	\$9999.77	0.16	\$1621.56
16:50	\$9999.77	AGL SA	TORRB3	Energy	\$9999.77	0.20	\$2026.95
		AGL SA	TORRB4	Energy	\$9999.77	0.20	\$2026.95
		AGL SA	TORRA1	Energy	\$9999.77	0.10	\$975.58
		AGL SA	TORRA2	Energy	\$9999.77	0.10	\$975.58
		AGL SA	TORRA3	Energy	\$9999.77	0.10	\$975.58
		AGL SA	TORRA4	Energy	\$9999.77	0.05	\$487.79
16:55	\$9999.77	AGL SA	TORRB1	Energy	\$9999.77	0.15	\$1463.37
		AGL SA	TORRB2	Energy	\$9999.77	0.15	\$1463.37
		AGL SA	TORRB3	Energy	\$9999.77	0.18	\$1829.26
		AGL SA	TORRB4	Energy	\$9999.77	0.18	\$1829.26
		AGL SA	TORRA1	Energy	\$9999.77	0.10	\$975.58
		AGL SA	TORRA2	Energy	\$9999.77	0.10	\$975.58

17:00	\$9999.77	AGL SA	TORRA1	Energy	\$9999.77	0.10	\$975.58
		AGL SA	TORRA2	Energy	\$9999.77	0.10	\$975.58
		AGL SA	TORRA3	Energy	\$9999.77	0.10	\$975.58
		AGL SA	TORRA4	Energy	\$9999.77	0.05	\$487.79
		AGL SA	TORRB1	Energy	\$9999.77	0.15	\$1463.37
		AGL SA	TORRB2	Energy	\$9999.77	0.15	\$1463.37
		AGL SA	TORRB3	Energy	\$9999.77	0.18	\$1829.26
		AGL SA	TORRB4	Energy	\$9999.77	0.18	\$1829.26
<b>Spot price</b>		<b>\$10 000/MWh</b>					

### Thursday 29 January – South Australia – 8.30 am

Time	Dispatch price	Participant	Unit	Service	Offer price	Marginal change	Contribution
08:05	\$10 000.00*	Southern Hydro	MCKAY2	Energy	\$8599.89	1.41	\$12 138.40
		Snowy Hydro	UPPTUMUT	Energy	\$26.47	-0.52	-\$13.87
08:10	\$6492.04	Southern Hydro	MCKAY2	Energy	\$4599.89	1.41	\$6505.85
		Snowy Hydro	UPPTUMUT	Energy	\$26.47	-0.52	-\$13.83
08:15	\$5681.85	Southern Hydro	MCKAY2	Energy	\$8599.89	0.70	\$6023.36
		Hydro Tasmania	GORDON	Energy	\$260.30	0.65	\$169.57
		Snowy Hydro	MURRAY	Energy	\$0.00	-0.26	\$0.00
		Basslink	BASSLINK	Energy	-\$968.20	0.63	-\$614.04
		Int. Power	HWPS5	Energy	-\$1000.00	-0.09	\$94.38
		Ecogen	JLB01	Energy	-\$1000.00	-0.01	\$8.58
		Mac Generation	BW01	Lower 5 min	\$0.01	-0.63	-\$0.01
08:20	\$10 000.00*	Ecogen	JLB01	Energy	\$7500.75	2.12	\$15 871.89
		Hydro Tasmania	GORDON	Energy	\$260.30	-1.25	-\$325.63
		Basslink	BASSLINK	Energy	\$0.01	-1.20	-\$0.01
08:25	\$10 000.00*	Origin Energy	URANQ12	Energy	\$9717.90	2.20	\$21 378.31
		Hydro Tasmania	GORDON	Energy	\$260.30	0.63	\$163.62
		Ecogen	JLB03	Energy	\$55.77	-0.10	-\$5.45
		Snowy Hydro	UPPTUMUT	Energy	\$26.47	0.94	\$24.99
		Eraring Energy	ER01	Energy	\$25.01	-1.17	-\$29.21
		Eraring Energy	ER02	Energy	\$25.01	-1.17	-\$29.21
		Basslink	BASSLINK	Energy	-\$968.20	0.60	-\$583.31
		Snowy Hydro	MURRAY	Energy	-\$1000.00	-0.17	\$172.19
08:30	\$9712.68	Southern Hydro	MCKAY2	Energy	\$8599.89	1.13	\$9697.58
		Snowy Hydro	TUMUT3	Energy	\$119.40	0.19	\$23.01
		Stanwell	GSTONE1	Energy	\$29.65	-0.09	-\$2.63
		Stanwell	GSTONE3	Energy	\$29.65	-0.09	-\$2.63
		Stanwell	GSTONE4	Energy	\$29.65	-0.09	-\$2.63
<b>Spot price</b>		<b>\$8266/MWh</b>					

### Thursday 29 January – South Australia – 9 am

Time	Dispatch price	Participant	Unit	Service	Offer price	Marginal change	Contribution
08:35	\$6975.69	Southern Hydro	MCKAY2	Energy	\$8599.89	0.81	\$6943.47
		Synergen	MINTARO	Energy	\$299.10	0.11	\$32.90
		Eraring Energy	ER01	Energy	\$40.00	0.00	-\$0.17
		Eraring Energy	ER02	Energy	\$40.00	0.00	-\$0.17
		Eraring Energy	ER03	Energy	\$40.00	0.00	-\$0.17
		Eraring Energy	ER04	Energy	\$40.00	0.00	-\$0.17
08:40	\$10 000.00*	Synergen	MINTARO	Energy	\$299.10	14.84	\$4437.51
		Stanwell	STAN-2	Energy	\$35.56	39.68	\$1411.11
		Basslink	BASSLINK	Energy	-\$968.20	-74.11	\$71 757.20
		Hydro Tasmania	GORDON	Energy	-\$999.70	-79.73	\$79 707.53
		Ecogen	JLB01	Energy	-\$1000.00	12.03	-\$12 031.30
		Constraint			\$200 000	0.00	-\$14.00
08:45	\$10 000.00*	Constraint			\$200 000	0.00	-\$14.00
		Constraint			\$200 000	-0.04	-\$7860.00
		Basslink	BASSLINK	Energy	-\$968.20	1.43	-\$1387.29
		Hydro Tasmania	GORDON	Energy	-\$999.70	1.55	-\$1544.87
		Ecogen	JLA02	Energy	-\$1000.00	-0.26	\$260.46
		Ecogen	JLB01	Energy	-\$1000.00	-0.20	\$204.67
		Constraint			\$200 000	0.00	\$0.00
		Constraint			\$200 000	0.00	\$0.00
Constraint			\$200 000	0.00	\$126.00		
Constraint			\$200 000	0.00	\$126.00		

08:50	\$10 000.00*	Basslink	BASSLINK	Energy	-\$968.20	1.43	-\$1386.73
		Hydro Tasmania	REECE1	Energy	-\$999.72	1.54	-\$1544.28
		Ecogen	JLA02	Energy	-\$1000.00	-0.26	\$260.31
		Ecogen	JLB01	Energy	-\$1000.00	-0.07	\$68.20
		Ecogen	JLB02	Energy	-\$1000.00	-0.07	\$68.20
		Ecogen	JLB03	Energy	-\$1000.00	-0.07	\$68.20
			Constraint		\$200 000	0.00	\$0.00
			Constraint		\$200 000	0.00	\$0.00
			Constraint		\$200 000	0.00	\$0.00
			Constraint		\$200 000	0.00	\$0.00
			Constraint		\$200 000	0.00	\$124.00
			Constraint		\$200 000	0.00	\$124.00
08:55	\$10 000.00*	LYMMCO	LYA4	Energy	\$4750.79	20.38	\$96 825.47
		Basslink	BASSLINK	Energy	-\$968.20	-19.83	\$19 202.85
		Hydro Tasmania	REECE1	Energy	-\$999.72	-21.18	\$21 170.12
		Ecogen	JLB01	Energy	-\$1000.00	-0.03	\$29.62
		Ecogen	JLB02	Energy	-\$1000.00	-0.03	\$29.62
		Ecogen	JLB03	Energy	-\$1000.00	-0.03	\$29.62
			Constraint		\$200 000	0.00	\$0.00
			Constraint		\$200 000	0.00	\$0.00
			Constraint		\$200 000	0.00	\$58.00
09:00	\$10 000.00*	Synergen	MINTARO	Energy	\$299.10	1.00	\$299.10
			Constraint		\$200 000	1.00	\$200 000.00
<b>Spot price</b>		<b>\$9398/MWh</b>					

### Thursday 29 January – South Australia – 12 pm

Time	Dispatch price	Participant	Unit	Service	Offer price	Marginal change	Contribution
11:35	\$4999.77	AGL SA	TORRA2	Energy	\$4999.77	1.00	\$4999.77
11:40	\$499.50	Synergen	SNUG1	Energy	\$499.50	1.00	\$499.50
11:45	\$4999.77	AGL SA	TORRA2	Energy	\$4999.77	1.00	\$4999.77
11:50	\$4999.77	AGL SA	TORRA2	Energy	\$4999.77	1.00	\$4999.77
11:55	\$10 000.00*	Snowy Hydro	MURRAY	Energy	\$9998.98	20.98	\$209 795.10
		Snowy Hydro	TUMUT3	Energy	\$89.69	-22.54	-\$2021.87
12:00	\$4999.77	AGL SA	TORRA2	Energy	\$4999.77	1.00	\$4999.77
<b>Spot price</b>		<b>\$5042/MWh</b>					

### Thursday 29 January – South Australia – 12.30 pm

Time	Dispatch price	Participant	Unit	Service	Offer price	Marginal change	Contribution
12:05	\$299.40	Synergen	DRYCGT1	Energy	\$299.40	1.00	\$299.40
12:10	\$499.50	Synergen	SNUG1	Energy	\$499.50	1.00	\$499.50
12:15	\$4999.77	AGL SA	TORRA2	Energy	\$4999.77	1.00	\$4999.77
12:20	\$10 000.00*	Snowy Hydro	MURRAY	Energy	\$9998.98	17.63	\$176 290.52
		Snowy Hydro	TUMUT3	Energy	\$119.40	-19.21	-\$2293.49
12:25	\$10 000.00*	Snowy Hydro	MURRAY	Energy	\$9998.98	16.68	\$166 793.89
		Snowy Hydro	TUMUT3	Energy	\$119.40	-18.26	-\$2180.07
12:30	\$10 000.00*	Snowy Hydro	MURRAY	Energy	\$9998.98	16.26	\$162 601.71
		Snowy Hydro	TUMUT3	Energy	\$149.95	-17.87	-\$2678.93
<b>Spot price</b>		<b>\$5594/MWh</b>					

### Thursday 29 January – South Australia – 2 pm

Time	Dispatch price	Participant	Unit	Service	Offer price	Marginal change	Contribution
13:35	\$9999.77	AGL SA	TORRB2	Energy	\$9999.77	0.50	\$4999.89
		AGL SA	TORRB3	Energy	\$9999.77	0.50	\$4999.89
13:40	\$9999.77	AGL SA	TORRB2	Energy	\$9999.77	1.00	\$9999.77
13:45	\$10 000.00*	AGL SA	TORRB2	Energy	\$9999.77	0.50	\$4999.89
		AGL SA	TORRB3	Energy	\$9999.77	0.50	\$4999.89
		Delta Electricity	WW7	Raise reg	\$1.00	1.00	\$1.00
		AGL SA	TORRB2	Raise reg	\$0.25	-0.50	-\$0.13
		AGL SA	TORRB3	Raise reg	\$0.25	-0.50	-\$0.13
13:50	\$10 000.00*	Snowy Hydro	MURRAY	Energy	\$9998.98	18.82	\$188 152.41
		Mac Generation	LD02	Energy	\$244.00	-20.45	-\$4989.22
		Mac Generation	BW02	Raise 5 min	\$1.20	-1.02	-\$1.23
		Mac Generation	LD02	Raise reg	\$0.02	1.02	\$0.02

13:55	\$10 000.00*	Snowy Hydro	MURRAY	Energy	\$9998.98	18.81	\$188 064.42
		Mac Generation	LD02	Energy	\$244.00	-20.44	-\$4987.08
		Tarong	TARONG#2	Raise reg	\$1.40	-1.02	-\$1.43
		Mac Generation	LD02	Raise reg	\$0.02	1.02	\$0.02
14:00	\$10 000.00	NEMMCO	VoLL override	Energy	\$10 000	1	\$10 000.00
<b>Spot price</b>		<b>\$10 000/MWh</b>					

### Thursday 29 January – South Australia – 2.30 pm

Time	Dispatch price	Participant	Unit	Service	Offer price	Marginal change	Contribution
14:05	\$10 000.00	NEMMCO	VoLL override	Energy	\$10 000.00	1	\$10 000.00
14:10	\$10 000.00	NEMMCO	VoLL override	Energy	\$10 000.00	1	\$10 000.00
14:15	\$10 000.00	NEMMCO	VoLL override	Energy	\$10 000.00	1	\$10 000.00
14:20	\$10 000.00	NEMMCO	VoLL override	Energy	\$10 000.00	1	\$10 000.00
14:25	\$10 000.00	NEMMCO	VoLL override	Energy	\$10 000.00	1	\$10 000.00
14:30	\$10 000.00	NEMMCO	VoLL override	Energy	\$10 000.00	1	\$10 000.00
<b>Spot price</b>		<b>\$9471/MWh</b>					

### Thursday 29 January – South Australia – 3 pm

Time	Dispatch price	Participant	Unit	Service	Offer price	Marginal change	Contribution
14:35	\$10 000.00	NEMMCO	VoLL override	Energy	\$10 000.00	1	\$10 000.00
14:40	\$10 000.00	NEMMCO	VoLL override	Energy	\$10 000.00	1	\$10 000.00
14:45	\$10 000.00	NEMMCO	VoLL override	Energy	\$10 000.00	1	\$10 000.00
14:50	\$10 000.00	NEMMCO	VoLL override	Energy	\$10 000.00	1	\$10 000.00
14:55	\$10 000.00	NEMMCO	VoLL override	Energy	\$10 000.00	1	\$10 000.00
15:00	\$10 000.00	NEMMCO	VoLL override	Energy	\$10 000.00	1	\$10 000.00
<b>Spot price</b>		<b>\$9733/MWh</b>					

### Wednesday 28 January – Victoria – 3.30 pm

Time	Dispatch price	Participant	Unit	Service	Offer price	Marginal change	Contribution
15:05	\$257.79	LYMMCO	LYA1	Energy	\$257.79	1.00	\$257.79
15:10	\$8901.51	AGL SA	TORRA2	Energy	\$9999.77	0.12	\$1227.77
		AGL SA	TORRA3	Energy	\$9999.77	0.12	\$1227.77
		AGL SA	TORRB1	Energy	\$9999.77	0.18	\$1841.66
		AGL SA	TORRB3	Energy	\$9999.77	0.23	\$2302.15
		AGL SA	TORRB4	Energy	\$9999.77	0.23	\$2302.15
15:15	\$8901.76	AGL SA	TORRA2	Energy	\$9999.77	0.12	\$1227.87
		AGL SA	TORRA3	Energy	\$9999.77	0.12	\$1227.87
		AGL SA	TORRB1	Energy	\$9999.77	0.18	\$1841.76
		AGL SA	TORRB3	Energy	\$9999.77	0.23	\$2302.15
		AGL SA	TORRB4	Energy	\$9999.77	0.23	\$2302.15
15:20	\$8948.22	AGL SA	TORRA2	Energy	\$9999.77	0.16	\$1556.16
		AGL SA	TORRA3	Energy	\$9999.77	0.16	\$1556.16
		AGL SA	TORRB3	Energy	\$9999.77	0.29	\$2917.93
		AGL SA	TORRB4	Energy	\$9999.77	0.29	\$2917.93
15:25	\$8948.30	AGL SA	TORRA2	Energy	\$9999.77	0.16	\$1556.26
		AGL SA	TORRA3	Energy	\$9999.77	0.16	\$1556.26
		AGL SA	TORRB3	Energy	\$9999.77	0.29	\$2917.93
		AGL SA	TORRB4	Energy	\$9999.77	0.29	\$2917.93
15:30	\$257.79	LYMMCO	LYA1	Energy	\$257.79	1.00	\$257.79
<b>Spot price</b>		<b>\$6036/MWh</b>					

### Thursday 29 January – Victoria – 8.30 am

Time	Dispatch price	Participant	Unit	Service	Offer price	Marginal change	Contribution
08:05	\$10 000.00*	Southern Hydro	MCKAY2	Energy	\$8599.89	1.54	\$13 219.84
		Snowy Hydro	UPPTUMUT	Energy	\$26.47	-0.57	-\$15.11
08:10	\$7068.94	Southern Hydro	MCKAY2	Energy	\$4599.89	1.54	\$7084.01
		Snowy Hydro	UPPTUMUT	Energy	\$26.47	-0.57	-\$15.06

08:15	\$10 000.00*	Southern Hydro	MCKAY2	Energy	\$8599.89	1.37	\$11 773.68
		Hydro Tasmania	GORDON	Energy	\$260.30	0.17	\$43.53
		Snowy Hydro	MURRAY	Energy	\$0.00	-0.50	\$0.00
		Basslink	BASSLINK	Energy	-\$968.20	0.16	-\$157.62
		Int. Power	HWPS5	Energy	-\$1000.00	-0.02	\$24.23
		Ecogen	JLB01	Energy	-\$1000.00	0.00	\$2.20
		Mac Generation	BW01	Lower 5 min	\$0.01	-0.16	\$0.00
08:20	\$10 000.00*	Ecogen	JLB01	Energy	\$7500.75	4.39	\$32 924.09
		Hydro Tasmania	GORDON	Energy	\$260.30	-3.63	-\$945.81
		Basslink	BASSLINK	Energy	\$0.01	-3.47	-\$0.03
08:25	\$10 000.00*	Origin Energy	URANQ12	Energy	\$9717.90	4.50	\$43 706.06
		Hydro Tasmania	GORDON	Energy	\$260.30	0.12	\$31.04
		Ecogen	JLB03	Energy	\$55.77	-0.02	-\$1.03
		Snowy Hydro	UPPTUMUT	Energy	\$26.47	1.93	\$51.09
		Eraring Energy	ER01	Energy	\$25.01	-2.39	-\$59.71
		Eraring Energy	ER02	Energy	\$25.01	-2.39	-\$59.71
		Basslink	BASSLINK	Energy	-\$968.20	0.11	-\$110.65
		Snowy Hydro	MURRAY	Energy	-\$1000.00	-0.35	\$352.03
08:30	\$10 000.00*	Southern Hydro	MCKAY2	Energy	\$8599.89	1.54	\$13 246.84
		Snowy Hydro	TUMUT3	Energy	\$119.40	-0.84	-\$100.25
		Stanwell	GSTONE1	Energy	\$29.65	0.07	\$2.22
		Stanwell	GSTONE3	Energy	\$29.65	0.07	\$2.22
		Stanwell	GSTONE4	Energy	\$29.65	0.07	\$2.22
<b>Spot price</b>		<b>\$9511/MWh</b>					

### Thursday 29 January – Victoria – 9 am

Time	Dispatch price	Participant	Unit	Service	Offer price	Marginal change	Contribution
08:35	\$10 000.00*	Southern Hydro	MCKAY2	Energy	\$8599.89	1.53	\$13 199.20
		Eraring Energy	ER01	Energy	\$40.00	-0.15	-\$6.05
		Eraring Energy	ER02	Energy	\$40.00	-0.15	-\$6.05
		Eraring Energy	ER03	Energy	\$40.00	-0.15	-\$6.05
		Eraring Energy	ER04	Energy	\$40.00	-0.15	-\$6.05
08:40	\$10 000.00*	Synergen	MINTARO	Energy	\$299.10	30.36	\$9080.79
		Stanwell	STAN-2	Energy	\$35.56	81.21	\$2887.66
		Basslink	BASSLINK	Energy	-\$968.20	-152.78	\$147 924.58
		Hydro Tasmania	GORDON	Energy	-\$999.70	-164.36	\$164 313.85
		Ecogen	JLB01	Energy	-\$1000.00	24.80	-\$24 802.04
		Constraint			\$200 000	0.00	-\$30.00
		Constraint			\$200 000	0.00	-\$30.00
Constraint			\$200 000	-0.08	-\$16 202.00		
08:45	\$10 000.00*	Basslink	BASSLINK	Energy	-\$968.20	1.81	-\$1756.74
		Hydro Tasmania	GORDON	Energy	-\$999.70	1.96	-\$1956.28
		Ecogen	JLA02	Energy	-\$1000.00	-0.53	\$533.16
		Ecogen	JLB01	Energy	-\$1000.00	-0.24	\$237.37
		Constraint			\$200 000	0.00	\$0.00
		Constraint			\$200 000	0.00	\$0.00
		Constraint			\$200 000	0.00	\$138.00
		Constraint			\$200 000	0.00	\$138.00
08:50	\$10 000.00*	Basslink	BASSLINK	Energy	-\$968.20	1.81	-\$1756.75
		Hydro Tasmania	REECE1	Energy	-\$999.72	1.96	-\$1956.32
		Ecogen	JLA02	Energy	-\$1000.00	-0.53	\$533.16
		Ecogen	JLB01	Energy	-\$1000.00	-0.08	\$79.13
		Ecogen	JLB02	Energy	-\$1000.00	-0.08	\$79.13
		Ecogen	JLB03	Energy	-\$1000.00	-0.08	\$79.13
		Constraint			\$200 000	0.00	\$0.00
		Constraint			\$200 000	0.00	\$0.00
		Constraint			\$200 000	0.00	\$0.00
		Constraint			\$200 000	0.00	\$0.00
		Constraint			\$200 000	0.00	\$138.00
Constraint			\$200 000	0.00	\$138.00		
08:55	\$10 000.00*	LYMMCO	LYA4	Energy	\$4750.79	41.32	\$196 313.62
		Basslink	BASSLINK	Energy	-\$968.20	-41.32	\$40 008.26
		Hydro Tasmania	REECE1	Energy	-\$999.72	-44.12	\$44 106.98



09:00	\$10 000.00*	Synergen	MINTARO	Energy	\$299.10	2.05	\$612.29
		Basslink	BASSLINK	Energy	-\$968.20	-1.12	\$1083.06
		Hydro Tasmania	POAT220	Energy	-\$999.68	0.11	-\$110.90
		Hydro Tasmania	JBUTTERS	Energy	-\$999.76	-1.25	\$1253.60
		Ecogen	JLB01	Energy	-\$1000.00	0.06	-\$60.53
		Ecogen	JLB02	Energy	-\$1000.00	0.06	-\$60.53
		Ecogen	JLB03	Energy	-\$1000.00	0.06	-\$60.53
			Constraint		\$200 000	0.00	\$0.00
			Constraint		\$200 000	0.00	\$0.00
			Constraint		\$200 000	0.00	\$0.00
			Constraint		\$200 000	0.00	\$0.00
			Constraint		\$200 000	0.00	-\$118.00
			Constraint		\$200 000	0.00	-\$118.00
			Constraint		\$200 000	2.05	\$409 420.00
		Hydro Tasmania	GORDON	Lower 60 sec	\$0.20	-0.02	\$0.00
		Hydro Tasmania	POAT220	Lower 60 sec	\$0.20	0.02	\$0.00
		Hydro Tasmania	POAT220	Raise 60 sec	\$0.40	1.12	\$0.45
		Delta Electricity	MP1	Raise 60 sec	\$0.10	-1.12	-\$0.11
<b>Spot price</b>		<b>\$10 000/MWh</b>					

### Thursday 29 January – Victoria – 12 pm

Time	Dispatch price	Participant	Unit	Service	Offer price	Marginal change	Contribution
11:35	\$5036.66	AGL SA	TORRA2	Energy	\$4999.77	1.01	\$5036.67
11:40	\$503.08	Synergen	SNUG1	Energy	\$499.50	1.01	\$503.08
11:45	\$5008.32	AGL SA	TORRA2	Energy	\$4999.77	1.00	\$5008.32
11:50	\$5008.03	AGL SA	TORRA2	Energy	\$4999.77	1.00	\$5008.02
11:55	\$10 000.00*	Snowy Hydro	MURRAY	Energy	\$9998.98	21.02	\$210 181.76
		Snowy Hydro	TUMUT3	Energy	\$89.69	-22.58	-\$2025.60
12:00	\$5035.78	AGL SA	TORRA2	Energy	\$4999.77	1.01	\$5035.77
<b>Spot price</b>		<b>\$5099/MWh</b>					

### Thursday 29 January – Victoria – 12.30 pm

Time	Dispatch price	Participant	Unit	Service	Offer price	Marginal change	Contribution
12:05	\$288.90	Synergen	DRYCGT1	Energy	\$299.40	0.96	\$288.90
12:10	\$489.85	Synergen	SNUG1	Energy	\$499.50	0.98	\$489.85
12:15	\$4930.44	AGL SA	TORRA2	Energy	\$4999.77	0.99	\$4930.42
12:20	\$10 000.00*	Snowy Hydro	MURRAY	Energy	\$9998.98	17.48	\$174 783.97
		Snowy Hydro	TUMUT3	Energy	\$119.40	-19.04	-\$2273.89
12:25	\$10 000.00*	Snowy Hydro	MURRAY	Energy	\$9998.98	16.54	\$165 383.03
		Snowy Hydro	TUMUT3	Energy	\$119.40	-18.10	-\$2161.63
12:30	\$10 000.00*	Snowy Hydro	MURRAY	Energy	\$9998.98	15.86	\$158 587.72
		Snowy Hydro	TUMUT3	Energy	\$149.95	-17.42	-\$2612.80
<b>Spot price</b>		<b>\$5885/MWh</b>					

### Thursday 29 January – Victoria – 1 pm

Time	Dispatch price	Participant	Unit	Service	Offer price	Marginal change	Contribution
12:35	\$10 000.00*	Snowy Hydro	MURRAY	Energy	\$9998.98	15.70	\$156 993.59
12:40	\$10 000.00*	Snowy Hydro	MURRAY	Energy	\$9998.98	16.70	\$166 965.67
12:45	\$10 000.00	NEMMCO	VoLL override	Energy	\$10 000.00	1	\$10 000.00
12:50	\$10 000.00	NEMMCO	VoLL override	Energy	\$10 000.00	1	\$10 000.00
12:55	\$10 000.00	NEMMCO	VoLL override	Energy	\$10 000.00	1	\$10 000.00
13:00	\$10 000.00	NEMMCO	VoLL override	Energy	\$10 000.00	1	\$10 000.00
<b>Spot price</b>		<b>\$9898/MWh</b>					

### Thursday 29 January – Victoria – 1.30 pm

Time	Dispatch price	Participant	Unit	Service	Offer price	Marginal change	Contribution
13:05	\$10 000.00	NEMMCO	VoLL override	Energy	\$10 000.00	1	\$10 000.00
13:10	\$10 000.00	NEMMCO	VoLL override	Energy	\$10 000.00	1	\$10 000.00
13:15	\$10 000.00	NEMMCO	VoLL override	Energy	\$10 000.00	1	\$10 000.00
13:20	\$10 000.00	NEMMCO	VoLL override	Energy	\$10 000.00	1	\$10 000.00
13:25	\$10 000.00	NEMMCO	VoLL override	Energy	\$10 000.00	1	\$10 000.00
13:30	\$10 000.00	NEMMCO	VoLL override	Energy	\$10 000.00	1	\$10 000.00
<b>Spot price</b>		<b>\$9585/MWh</b>					

### Thursday 29 January – Victoria – 2 pm

Time	Dispatch price	Participant	Unit	Service	Offer price	Marginal change	Contribution
13:35	\$10 000.00	NEMMCO	VoLL override	Energy	\$10 000.00	1	\$10 000.00
13:40	\$10 000.00	NEMMCO	VoLL override	Energy	\$10 000.00	1	\$10 000.00
13:45	\$10 000.00	NEMMCO	VoLL override	Energy	\$10 000.00	1	\$10 000.00
13:50	\$10 000.00	NEMMCO	VoLL override	Energy	\$10 000.00	1	\$10 000.00
13:55	\$10 000.00	NEMMCO	VoLL override	Energy	\$10 000.00	1	\$10 000.00
14:00	\$10 000.00	NEMMCO	VoLL override	Energy	\$10 000.00	1	\$10 000.00
<b>Spot price</b>	<b>\$9358/MWh</b>						

### Thursday 29 January – Victoria – 2.30 pm

Time	Dispatch price	Participant	Unit	Service	Offer price	Marginal change	Contribution
14:05	\$10 000.00	NEMMCO	VoLL override	Energy	\$10 000.00	1	\$10 000.00
14:10	\$10 000.00	NEMMCO	VoLL override	Energy	\$10 000.00	1	\$10 000.00
14:15	\$10 000.00	NEMMCO	VoLL override	Energy	\$10 000.00	1	\$10 000.00
14:20	\$10 000.00	NEMMCO	VoLL override	Energy	\$10 000.00	1	\$10 000.00
14:25	\$10 000.00	NEMMCO	VoLL override	Energy	\$10 000.00	1	\$10 000.00
14:30	\$10 000.00	NEMMCO	VoLL override	Energy	\$10 000.00	1	\$10 000.00
<b>Spot price</b>	<b>\$9501/MWh</b>						

### Thursday 29 January – Victoria – 3 pm

Time	Dispatch price	Participant	Unit	Service	Offer price	Marginal change	Contribution
14:35	\$10 000.00	NEMMCO	VoLL override	Energy	\$10 000.00	1	\$10 000.00
14:40	\$10 000.00	NEMMCO	VoLL override	Energy	\$10 000.00	1	\$10 000.00
14:45	\$10 000.00	NEMMCO	VoLL override	Energy	\$10 000.00	1	\$10 000.00
14:50	\$10 000.00	NEMMCO	VoLL override	Energy	\$10 000.00	1	\$10 000.00
14:55	\$10 000.00	NEMMCO	VoLL override	Energy	\$10 000.00	1	\$10 000.00
15:00	\$10 000.00	NEMMCO	VoLL override	Energy	\$10 000.00	1	\$10 000.00
<b>Spot price</b>	<b>\$10 000/MWh</b>						

### Thursday 29 January – Victoria – 3.30 pm

Time	Dispatch price	Participant	Unit	Service	Offer price	Marginal change	Contribution
15:05	\$10 000.00	NEMMCO	VoLL override	Energy	\$10 000.00	1	\$10 000.00
15:10	\$10 000.00	NEMMCO	VoLL override	Energy	\$10 000.00	1	\$10 000.00
15:15	\$10 000.00	NEMMCO	VoLL override	Energy	\$10 000.00	1	\$10 000.00
15:20	\$10 000.00	NEMMCO	VoLL override	Energy	\$10 000.00	1	\$10 000.00
15:25	\$8484.52	Mac Generation	BW03	Energy	\$6506.00	1.31	\$8535.68
		Tarong	W/HOE#1	Energy	\$274.73	-0.19	-\$51.16
15:30	\$10 000.00*	TRUenergy (SA)	AGLHAL	Energy	\$10 000.00	1.00	\$10 011.50
<b>Spot price</b>	<b>\$8383/MWh</b>						

### Thursday 29 January – Victoria – 4 pm

Time	Dispatch price	Participant	Unit	Service	Offer price	Marginal change	Contribution
15:35	\$10 000.00*	Snowy Hydro	MURRAY	Energy	\$9998.98	16.30	\$162 963.88
		Mac Generation	BW04	Energy	\$758.00	-17.86	-\$13 539.51
15:40	\$10 000.00*	TRUenergy (SA)	AGLHAL	Energy	\$10 000.00	1.01	\$10 119.70
15:45	\$10 000.00*	Snowy Hydro	MURRAY	Energy	\$9998.98	18.19	\$181 834.55
		Tarong	W/HOE#1	Energy	\$274.73	-22.22	-\$6105.46
15:50	\$10 000.00*	Snowy Hydro	MURRAY	Energy	\$9998.98	17.28	\$172 822.07
		Mac Generation	BW02	Energy	\$6504.00	-21.05	-\$136 912.19
		CS Energy	CALL_B_1	Energy	\$4995.00	2.51	\$12 517.57
15:55	\$10 000.00*	Snowy Hydro	MURRAY	Energy	\$9998.98	18.22	\$182 156.42
		Mac Generation	BW04	Energy	\$758.00	-19.78	-\$14 994.46
16:00	\$934.18	Mac Generation	BW04	Energy	\$758.00	1.29	\$979.86
		Tarong	TARONG#1	Energy	\$296.79	-0.15	-\$45.67
<b>Spot price</b>	<b>\$6872/MWh</b>						

\* Price capped to VoLL