

Spot prices greater than \$5000/MWh



AUSTRALIAN ENERGY
REGULATOR

South Australia: 10-13 November 2009

Introduction

The AER is required to publish a report covering the circumstances in which the spot price exceeds \$5000/MWh, pursuant to clause 3.13.7 (d) of the National Electricity Rules (Electricity Rules). That report should:

- describe significant factors contributing to the spot price exceeding \$5000/MWh, including withdrawal of generation capacity and network availability;
- assess whether rebidding pursuant to clause 3.8.22 contributed to the spot price exceeding \$5000/MWh;
- identify the marginal scheduled generating units; and
- identify all units with offers for the trading interval equal to or greater than \$5000/MWh and compare these dispatch offers to relevant dispatch offers in previous trading intervals.

Summary/Assessment

The spot price exceeded \$5000/MWh for 14 trading intervals between Tuesday 10 and Friday 13 November 2009 in South Australia, with 13 of these prices at the cap. All of the prices were forecast. Extreme temperatures, with the first-ever November heatwave, saw maximum demand above 2800 MW each day.

Bidding behaviour by AGL significantly contributed to the high priced events. AGL was the only participant who offered significant amounts of capacity above \$5000/MWh. In fact around 70 per cent of its capacity at Torrens Island power station was priced at close to the price cap through initial offers. Dispatch of this AGL capacity set the price at greater than \$9999/MWh for 80 out of 84 dispatch intervals during this period.

The extreme prices led to the cumulative price threshold being breached, resulting in a period of administered pricing being imposed from 4.30 pm Friday 13 November. The administered pricing period, which caps spot prices to \$300/MWh, applied in South Australia until the end of the 17 November trading day.

Import capability from Victoria was lower than forecast.

Rebidding did not contribute to the price outcomes.

Actual and forecast demand

Extreme weather conditions occurred from Sunday 8 November to Sunday 15 November, with temperatures exceeding 35 degrees for eight consecutive days and 38 degrees for six consecutive days. Maximum demand exceeded 2800 MW each weekday. Actual and forecast spot prices, demand and available capacity for each trading interval can be found in **Appendix A**

Figure 1 compares the actual maximum demand on each day with the maximum forecast demand prepared by AEMO four and twelve hours ahead of dispatch. The figure also shows the maximum temperature and number of spot prices above \$5000/MWh on each day. The maximum temperature for each day was close to that forecast the previous day.

Figure 1: South Australia actual and forecast maximum demand, number of spot prices above \$5000/MWh and maximum temperature

Date	Max Temp (°C)	Number of Spot prices above \$5000/MWh	Max Demand (MW)	Max forecast demand 4 hours ahead (MW)	Max forecast demand 12 hours ahead (MW)
Tue 10-Nov	38.9	3	2901	2889	2777
Wed 11-Nov	39.2	5	2976	3037	3085
Thu 12-Nov	39.2	4	2941	2984	2970
Fri 13-Nov	38.7	2	2858	2939	2989

Generator offers and rebidding

During the high price period of each of the four days, almost a quarter of the total available capacity in South Australia was priced above \$5000/MWh. AGL accounted for almost all of this capacity with around 750 MW (or 70 per cent of its available capacity) priced above \$5000/MWh. This was achieved through its initial offers for Torrens Island and Angaston power stations. Figure 2 details for each of the high priced days, the amount of capacity offered above and below \$5000/MWh in South Australia. It highlights the extent of the high-priced capacity offered by AGL. More details are presented in **Appendix B**.

AGL’s bidding strategy on Monday 9 November differed from that for Tuesday to Friday, with all capacity at Torrens Island priced below \$101/MWh. This meant that despite the demand on Monday also exceeding 2800 MW, very low reserves and a planned network outage that reduced imports across the Heywood interconnector, the price did not exceed \$147/MWh.

Figure 2: South Australia capacity priced above and below \$5000/MWh

Date	Capacity priced below \$5000/MWh (MW)	Capacity priced above \$5000/MWh (MW)	AGL capacity priced above \$5000/MWh (MW)
Tue 10-Nov	2574	797	750
Wed 11-Nov	2590	767	750
Thu 12-Nov	2334	768	750
Fri 13-Nov	2330	725	725

On Thursday 12 November at around 2 pm, Babcock and Brown’s Northern power station unit one tripped from 247 MW. This led to a short period of very low reserves¹. An increase in output from wind generation – from 40 MW at 2 pm to 270 MW by 4 pm - relieved the reserve shortfall. A planned network outage that commenced at 5.20 am, reducing imports across the Heywood interconnector, was completed at 4.35 pm and also improved available reserves.

There was no other significant rebidding.

Throughout the period between Tuesday 10 November and Friday 13 November, AGL set the price in 80 out of 84 dispatch intervals at \$9999/MWh or above. Price setting details are presented in **Appendix C**.

¹ Reserves were below the size of the largest unit.

Changes to network availability

Combined imports into South Australia were at the limit but lower than that forecast four hours ahead for every high priced trading interval. The average overestimate of import capability was 120 MW (24 MW across Heywood and 96 MW across Murraylink).

The largest errors occurred for Murraylink. The import limits were driven by the constraint used to manage the NSW Murraylink runback scheme².

On Thursday 12 November between 5.20 am and 4.35 pm a planned network outage of the Heywood to Moorabool No.1 500kV line in Victoria reduced imports into South Australia to 250 MW. At other times the reduction in import capability compared to that forecast was not the result of network outages. The reduction was related to an increase in the output from wind and conventional generators in the south east of South Australia compared to that forecast.

Figure 3 compares the actual import limit with that forecast four hours ahead during the high priced periods for each interconnector into South Australia. It also highlights the combined forecast error.

Figure 3: Actual and 4 hour ahead forecast import limits into South Australia

	Heywood import limit		Murraylink import limit		Combined forecast error
	Actual	4 hour forecast	Actual	4 hour forecast	
Tue 10-Nov 4 pm	358	375	90	171	99
Tue 10-Nov 4.30 pm	359	377	92	176	102
Tue 10-Nov 5 pm	367	376	101	174	81
Wed 11-Nov 3.30 pm	363	417	64	200	191
Wed 11-Nov 4 pm	362	416	70	168	153
Wed 11-Nov 4.30 pm	366	416	79	179	151
Wed 11-Nov 5 pm	371	415	92	187	140
Wed 11-Nov 5.30 pm	363	415	106	195	140
Thu 12-Nov 3.30 pm	250	250	85	188	103
Thu 12-Nov 4 pm	250	250	92	196	104
Thu 12-Nov 4.30 pm	250	250	98	196	99
Thu 12-Nov 5 pm	296	250	109	199	44
Fri 13-Nov 4 pm	360	412	135	220	136
Fri 13-Nov 4.30 pm	360	414	139	220	135

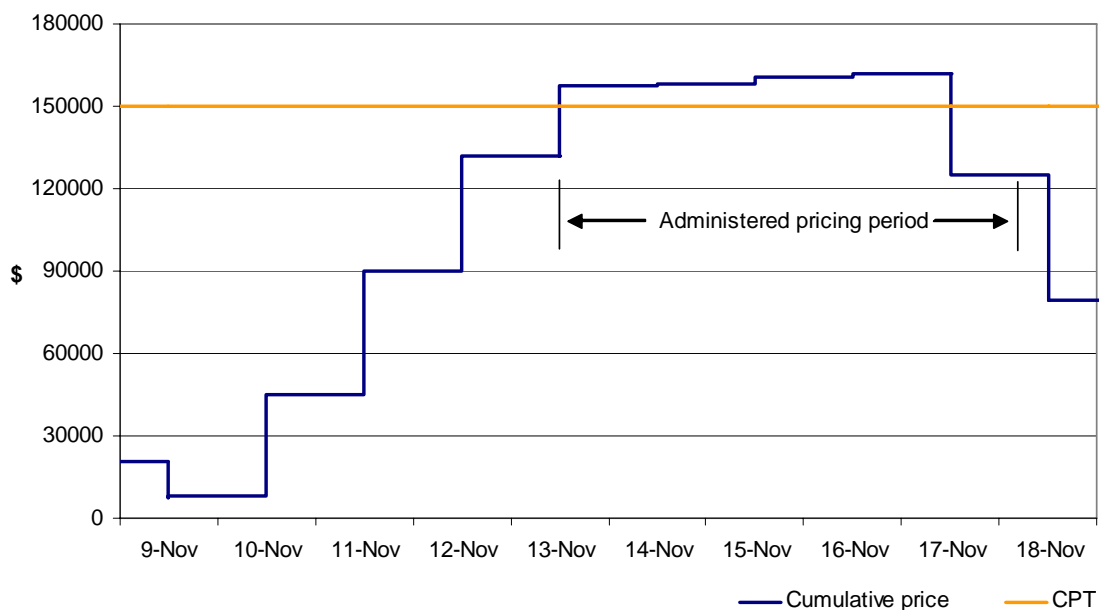
² This constraint limits flows across Murraylink to avoid voltage collapse for the loss of the Darlington Point to Buronga 220kV line in New South Wales.

Cumulative Price Threshold and the Administered Pricing Period

The cumulative weekly price (that is the rolling sum of spot prices for 336 trading intervals) exceeded the cumulative price threshold (CPT) of \$150 000 in South Australia on 13 November at 4.30 pm. As required under the Electricity Rules, this resulted in an administered pricing period and the spot price being capped at \$300/MWh (the administered price cap). Figure 4 shows the cumulative price, CPT and the period over which administered pricing occurred between 9 and 18 November. It shows the drop in cumulative price on 9 November, as a result of the high price on 2 November no longer being included in the weekly sum. It also shows the step increase in the cumulative price on each of the days 10 to 13 November and the breach of the CPT. At 4pm on Tuesday 17 November the cumulative price in South Australia fell below the threshold and administered pricing was revoked from the end of the trading day (at 4 am on 18 November).

Since market start in 1998 there have been five instances where the cumulative price has exceeded the CPT. Three of these have occurred in South Australia - on 17 March 2008, 29 January 2009 and 13 November 2009 - all driven predominantly by the bidding strategy of AGL. The other two events have occurred on 29 January 2009 in Victoria and on 16 June 2009 in Tasmania.

Figure 4: South Australia cumulative price, CPT and administered price period



Australian Energy Regulator

December 2009

Appendix A – Actual and forecast demand, spot price and available generation

Tue 10-Nov 4 pm	Actual	4 hr forecast	12 hr forecast
Demand (MW)	2893	2873	2777
Spot Price (\$/MWh)	10000	10000	10000
Available capacity (MW)	3124	3098	3084
Tue 10-Nov 4.30 pm	Actual	4 hr forecast	12 hr forecast
Demand (MW)	2901	2889	2798
Spot Price	10000	10000	10000
Available capacity (MW)	3133	3105	3112
Tue 10-Nov 5 pm	Actual	4 hr forecast	12 hr forecast
Demand (MW)	2874	2863	2783
Spot Price	10000	9999	434
Available capacity (MW)	3133	3102	3131
Wed 11-Nov 3.30 pm	Actual	4 hr forecast	12 hr forecast
Demand (MW)	2925	3039	3064
Spot Price	5062	10000	10000
Available capacity (MW)	3082	3124	3095
Wed 11-Nov 4 pm	Actual	4 hr forecast	12 hr forecast
Demand (MW)	2957	3037	3084
Spot Price	10000	10000	10000
Available capacity (MW)	3093	3125	3103
Wed 11-Nov 4.30 pm	Actual	4 hr forecast	12 hr forecast
Demand (MW)	2976	3024	3085
Spot Price	10000	10000	10000
Available capacity (MW)	3096	3119	3157
Wed 11-Nov 5 pm	Actual	4 hr forecast	12 hr forecast
Demand (MW)	2953	2994	3031
Spot Price	10000	9999	10000
Available capacity (MW)	3131	3123	3153
Wed 11-Nov 5.30 pm	Actual	4 hr forecast	12 hr forecast
Demand (MW)	2909	2992	2984
Spot Price	10000	9999	10000
Available capacity (MW)	3127	3123	3152
Thu 12-Nov 3.30 pm	Actual	4 hr forecast	12 hr forecast
Demand (MW)	2810	2944	2947
Spot Price	10000	10000	10000
Available capacity (MW)	2873	3135	3122
Thu 12-Nov 4 pm	Actual	4 hr forecast	12 hr forecast
Demand (MW)	2804	2958	2948
Spot Price	10000	10000	10000
Available capacity (MW)	2914	3146	3130
Thu 12-Nov 4.30 pm	Actual	4 hr forecast	12 hr forecast
Demand (MW)	2830	2984	2970
Spot Price	10000	10000	10000
Available capacity (MW)	2917	3156	3222
Thu 12-Nov 5 pm	Actual	4 hr forecast	12 hr forecast
Demand (MW)	2809	2974	2957
Spot Price	10000	10000	10000
Available capacity (MW)	2916	3165	3226
Fri 13-Nov 4 pm	Actual	4 hr forecast	12 hr forecast
Demand (MW)	2856	2930	2989
Spot Price	10000	10000	10000
Available capacity (MW)	2875	2831	2874
Fri 13-Nov 4.30 pm	Actual	4 hr forecast	12 hr forecast
Demand (MW)	2858	2939	2976
Spot Price	10000	10000	10000
Available capacity (MW)	2902	2821	2948

Appendix B – Closing bids

Figures B1 and B2 highlight the half hour closing bids for all participants in South Australia with significant capacity priced at or above \$5000/MWh during the trading intervals in which the spot price exceeded \$5000/MWh between Tuesday 10 November and Friday 13 November 2009. It also shows the generation output of that participant and the spot price.

Figure B1: AGL (Torrens Island) closing bid prices, dispatch and spot price

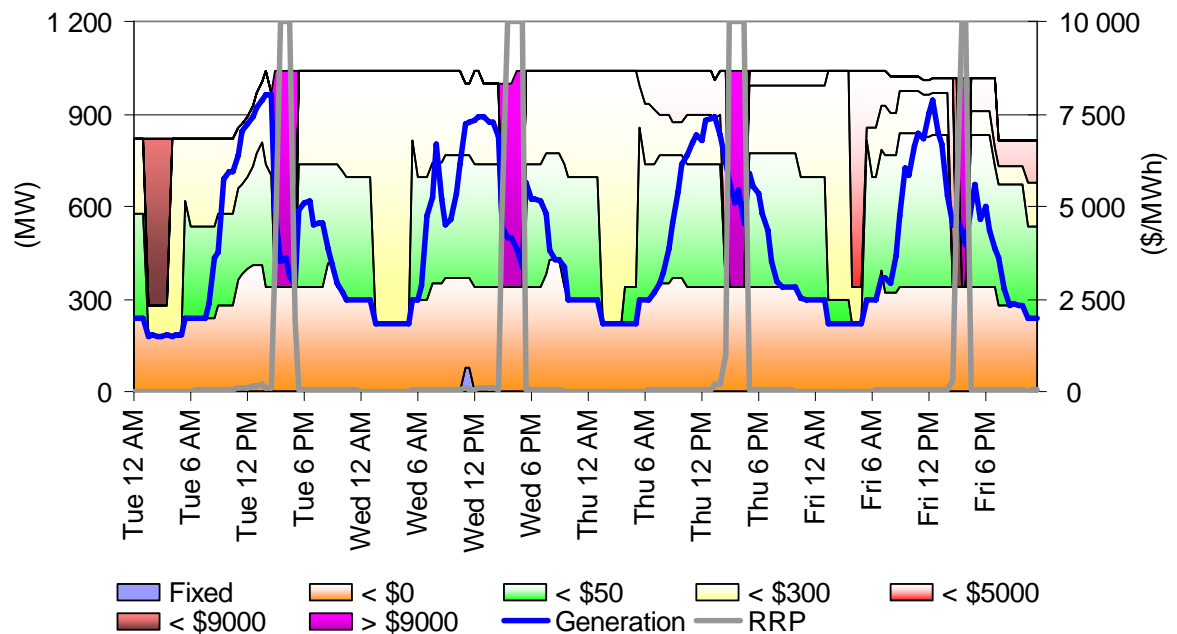
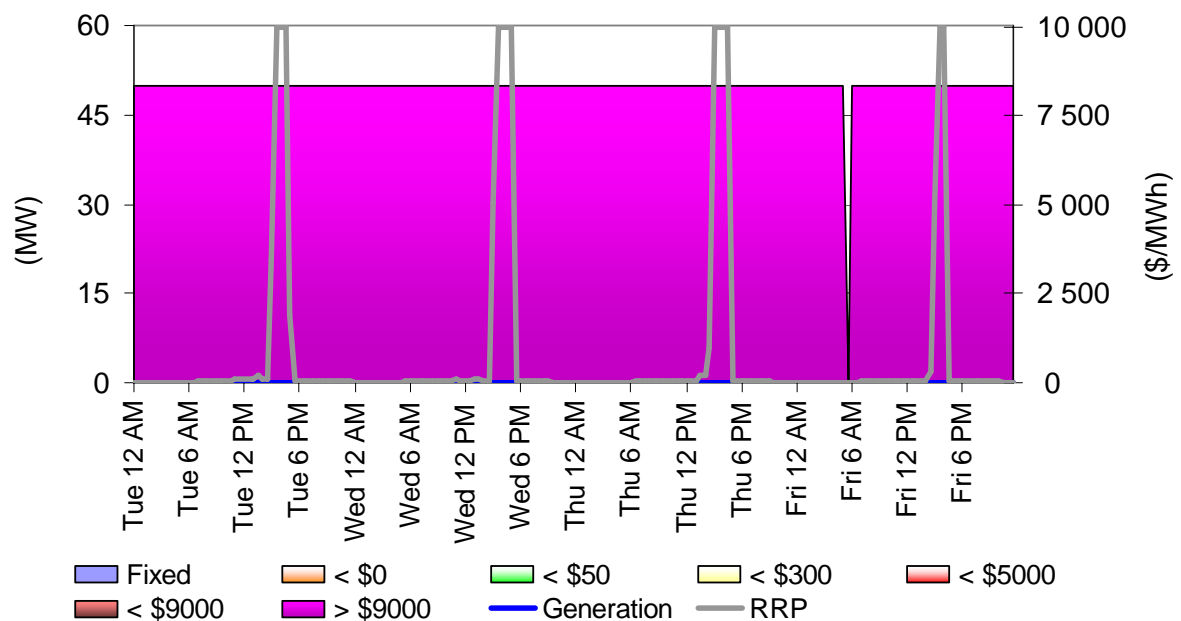


Figure B2: AGL (Angaston) closing bid prices, dispatch and spot price



Appendix C – Price setters for 10-13 November 2009

The following table identifies the trading interval in which the spot price exceeded \$5000/MWh. Each five minute dispatch interval price and the generating units involved in setting the energy price, as published in the market systems, are shown. This information is published by AEMO³. Also shown is the energy or ancillary service offer price involved in determining the dispatch price together with the quantity of that service and the contribution to the total energy price. The 30-minute spot price is the time weighted average of the six dispatch interval prices.

There were a further three dispatch intervals between 10 and 13 November where the price was at close to the price cap but on these occasions the spot price did not exceed \$5000/MWh.

Tuesday 10 November– South Australia – 4 pm

Time	Dispatch price	Participant	Unit	Service	Offer price	Marginal change	Contribution
15:35	\$9999.77	AGL SA	TORRA1	Energy	\$9999.77	0.50	\$4999.89
		AGL SA	TORRA4	Energy	\$9999.77	0.50	\$4999.89
15:40	\$9999.77	AGL SA	TORRB3	Energy	\$9999.77	0.20	\$1973.65
		AGL SA	TORRB4	Energy	\$9999.77	0.20	\$1973.65
		AGL SA	TORRB1	Energy	\$9999.77	0.20	\$1973.65
		AGL SA	TORRA4	Energy	\$9999.77	0.11	\$1052.58
		AGL SA	TORRA1	Energy	\$9999.77	0.11	\$1052.58
		AGL SA	TORRB2	Energy	\$9999.77	0.20	\$1973.65
15:45	\$9999.77	AGL SA	TORRB2	Energy	\$9999.77	0.20	\$1973.65
		AGL SA	TORRB3	Energy	\$9999.77	0.20	\$1973.65
		AGL SA	TORRB1	Energy	\$9999.77	0.20	\$1973.65
		AGL SA	TORRA4	Energy	\$9999.77	0.11	\$1052.58
		AGL SA	TORRA1	Energy	\$9999.77	0.11	\$1052.58
		AGL SA	TORRB4	Energy	\$9999.77	0.20	\$1973.65
15:50	\$9999.77	AGL SA	TORRB3	Energy	\$9999.77	0.20	\$1973.65
		AGL SA	TORRB2	Energy	\$9999.77	0.20	\$1973.65
		AGL SA	TORRB1	Energy	\$9999.77	0.20	\$1973.65
		AGL SA	TORRA4	Energy	\$9999.77	0.11	\$1052.58
		AGL SA	TORRA1	Energy	\$9999.77	0.11	\$1052.58
		AGL SA	TORRB4	Energy	\$9999.77	0.20	\$1973.65
15:55	\$9999.77	AGL SA	TORRB3	Energy	\$9999.77	0.20	\$1973.65
		AGL SA	TORRB2	Energy	\$9999.77	0.20	\$1973.65
		AGL SA	TORRB1	Energy	\$9999.77	0.20	\$1973.65
		AGL SA	TORRA4	Energy	\$9999.77	0.11	\$1052.58
		AGL SA	TORRA1	Energy	\$9999.77	0.11	\$1052.58
		AGL SA	TORRB4	Energy	\$9999.77	0.20	\$1973.65
16:00	\$9999.77	AGL SA	TORRB2	Energy	\$9999.77	0.20	\$1973.65
		AGL SA	TORRB1	Energy	\$9999.77	0.20	\$1973.65
		AGL SA	TORRB4	Energy	\$9999.77	0.20	\$1973.65
		AGL SA	TORRA4	Energy	\$9999.77	0.11	\$1052.58
		AGL SA	TORRA1	Energy	\$9999.77	0.11	\$1052.58
		AGL SA	TORRB3	Energy	\$9999.77	0.20	\$1973.65
Spot price	\$9999.77/MWh						

³ Details on how the price is determined can be found at www.aemo.com.au

Tuesday 10 November– South Australia – 4 30pm

Time	Dispatch price	Participant	Unit	Service	Offer price	Marginal change	Contribution
16:05	\$9999.77	AGL SA	TORRB3	Energy	\$9999.77	0.20	\$1973.65
		AGL SA	TORRB4	Energy	\$9999.77	0.20	\$1973.65
		AGL SA	TORRB2	Energy	\$9999.77	0.20	\$1973.65
		AGL SA	TORRA4	Energy	\$9999.77	0.11	\$1052.58
		AGL SA	TORRA1	Energy	\$9999.77	0.11	\$1052.58
		AGL SA	TORRB1	Energy	\$9999.77	0.20	\$1973.65
16:10	\$9999.77	AGL SA	TORRB3	Energy	\$9999.77	0.20	\$1973.65
		AGL SA	TORRB2	Energy	\$9999.77	0.20	\$1973.65
		AGL SA	TORRB4	Energy	\$9999.77	0.20	\$1973.65
		AGL SA	TORRA4	Energy	\$9999.77	0.11	\$1052.58
		AGL SA	TORRA1	Energy	\$9999.77	0.11	\$1052.58
		AGL SA	TORRB1	Energy	\$9999.77	0.20	\$1973.65
16:15	\$9999.77	AGL SA	TORRB4	Energy	\$9999.77	0.20	\$1973.65
		AGL SA	TORRB3	Energy	\$9999.77	0.20	\$1973.65
		AGL SA	TORRB2	Energy	\$9999.77	0.20	\$1973.65
		AGL SA	TORRA4	Energy	\$9999.77	0.11	\$1052.58
		AGL SA	TORRA1	Energy	\$9999.77	0.11	\$1052.58
		AGL SA	TORRB1	Energy	\$9999.77	0.20	\$1973.65
16:20	\$9999.77	AGL SA	TORRB3	Energy	\$9999.77	0.20	\$1973.65
		AGL SA	TORRB2	Energy	\$9999.77	0.20	\$1973.65
		AGL SA	TORRB1	Energy	\$9999.77	0.20	\$1973.65
		AGL SA	TORRA4	Energy	\$9999.77	0.11	\$1052.58
		AGL SA	TORRA1	Energy	\$9999.77	0.11	\$1052.58
		AGL SA	TORRB4	Energy	\$9999.77	0.20	\$1973.65
16:25	\$9999.77	AGL SA	TORRB3	Energy	\$9999.77	0.20	\$1973.65
		AGL SA	TORRB1	Energy	\$9999.77	0.20	\$1973.65
		AGL SA	TORRB2	Energy	\$9999.77	0.20	\$1973.65
		AGL SA	TORRB4	Energy	\$9999.77	0.20	\$1973.65
		AGL SA	TORRA4	Energy	\$9999.77	0.11	\$1052.58
		AGL SA	TORRA1	Energy	\$9999.77	0.11	\$1052.58
16:30	\$9999.77	AGL SA	TORRB4	Energy	\$9999.77	0.20	\$1973.65
		AGL SA	TORRB3	Energy	\$9999.77	0.20	\$1973.65
		AGL SA	TORRB1	Energy	\$9999.77	0.20	\$1973.65
		AGL SA	TORRA4	Energy	\$9999.77	0.11	\$1052.58
		AGL SA	TORRA1	Energy	\$9999.77	0.11	\$1052.58
		AGL SA	TORRB2	Energy	\$9999.77	0.20	\$1973.65
Spot price		\$9999.77/MWh					

Tuesday 10 November– South Australia – 5 pm

Time	Dispatch price	Participant	Unit	Service	Offer price	Marginal change	Contribution
16:35	\$9999.77	AGL SA	TORRB3	Energy	\$9999.77	0.20	\$1973.65
		AGL SA	TORRB4	Energy	\$9999.77	0.20	\$1973.65
		AGL SA	TORRB2	Energy	\$9999.77	0.20	\$1973.65
		AGL SA	TORRA4	Energy	\$9999.77	0.11	\$1052.58
		AGL SA	TORRA1	Energy	\$9999.77	0.11	\$1052.58
		AGL SA	TORRB1	Energy	\$9999.77	0.20	\$1973.65
16:40	\$9999.77	AGL SA	TORRB3	Energy	\$9999.77	0.25	\$2458.94
		AGL SA	TORRB2	Energy	\$9999.77	0.25	\$2458.94
		AGL SA	TORRA4	Energy	\$9999.77	0.13	\$1311.47
		AGL SA	TORRA1	Energy	\$9999.77	0.13	\$1311.47
		AGL SA	TORRB4	Energy	\$9999.77	0.25	\$2458.94
		AGL SA	TORRB4	Lower reg	\$0.25	-0.25	-\$0.06
		AGL SA	TORRB3	Lower reg	\$0.25	0.25	\$0.06
16:45	\$9999.77	AGL SA	TORRB3	Energy	\$9999.77	0.20	\$1973.65
		AGL SA	TORRB2	Energy	\$9999.77	0.20	\$1973.65
		AGL SA	TORRB1	Energy	\$9999.77	0.20	\$1973.65
		AGL SA	TORRA4	Energy	\$9999.77	0.11	\$1052.58
		AGL SA	TORRA1	Energy	\$9999.77	0.11	\$1052.58
		AGL SA	TORRB4	Energy	\$9999.77	0.20	\$1973.65
		AGL SA	TORRB3	Lower reg	\$0.25	-0.39	-\$0.10
		AGL SA	TORRB2	Lower reg	\$0.25	0.20	\$0.05
		AGL SA	TORRB1	Lower reg	\$0.25	0.20	\$0.05
16:50	\$9999.77	AGL SA	TORRB2	Energy	\$9999.77	0.20	\$1973.65
		AGL SA	TORRB1	Energy	\$9999.77	0.20	\$1973.65
		AGL SA	TORRA4	Energy	\$9999.77	0.11	\$1052.58
		AGL SA	TORRB3	Energy	\$9999.77	0.20	\$1973.65
		AGL SA	TORRA1	Energy	\$9999.77	0.11	\$1052.58
		AGL SA	TORRB4	Energy	\$9999.77	0.20	\$1973.65
		AGL SA	TORRB3	Lower reg	\$0.25	-0.39	-\$0.10
		AGL SA	TORRB2	Lower reg	\$0.25	0.20	\$0.05
		AGL SA	TORRB1	Lower reg	\$0.25	0.20	\$0.05
16:55	\$9999.77	AGL SA	TORRB2	Energy	\$9999.77	0.20	\$1973.65
		AGL SA	TORRB3	Energy	\$9999.77	0.20	\$1973.65
		AGL SA	TORRB4	Energy	\$9999.77	0.20	\$1973.65
		AGL SA	TORRB1	Energy	\$9999.77	0.20	\$1973.65
		AGL SA	TORRA1	Energy	\$9999.77	0.11	\$1052.58
		AGL SA	TORRA4	Energy	\$9999.77	0.11	\$1052.58
		AGL SA	TORRB2	Lower reg	\$0.25	-0.20	-\$0.05
		AGL SA	TORRB1	Lower reg	\$0.25	0.20	\$0.05
		17:00	\$9999.27	AGL SA	TORRB3	Energy	\$9999.77
AGL SA	TORRB2			Energy	\$9999.77	0.25	\$2499.94
AGL SA	TORRB1			Energy	\$9999.77	0.25	\$2499.94
AGL SA	TORRB4			Energy	\$9999.77	0.25	\$2499.94
CS Energy	SWAN_B_4			Lower reg	\$0.75	-1.00	-\$0.75
AGL SA	TORRB4			Lower reg	\$0.25	0.25	\$0.06
AGL SA	TORRB3			Lower reg	\$0.25	0.25	\$0.06
AGL SA	TORRB2			Lower reg	\$0.25	0.25	\$0.06
AGL SA	TORRB1			Lower reg	\$0.25	0.25	\$0.06
Spot price	\$9999.69/MWh						

Wednesday 11 November– South Australia – 3.30 pm

Time	Dispatch price	Participant	Unit	Service	Offer price	Marginal change	Contribution
15:05	\$97.09	Snowy Hydro	MURRAY	Energy	\$91.38	1.06	\$97.09
15:10	\$130.84	Snowy Hydro	MURRAY	Energy	\$119.93	1.09	\$130.84
15:15	\$145.40	Snowy Hydro	MURRAY	Energy	\$119.93	1.21	\$145.40
15:20	\$9999.77	AGL SA	TORRA1	Energy	\$9999.77	0.11	\$1052.58
		AGL SA	TORRB2	Energy	\$9999.77	0.20	\$1973.65
		AGL SA	TORRB4	Energy	\$9999.77	0.20	\$1973.65
		AGL SA	TORRB3	Energy	\$9999.77	0.20	\$1973.65
		AGL SA	TORRB1	Energy	\$9999.77	0.20	\$1973.65
		AGL SA	TORRA4	Energy	\$9999.77	0.11	\$1052.58
15:25	\$9999.77	AGL SA	TORRB4	Energy	\$9999.77	0.20	\$1973.65
		AGL SA	TORRB3	Energy	\$9999.77	0.20	\$1973.65
		AGL SA	TORRB2	Energy	\$9999.77	0.20	\$1973.65
		AGL SA	TORRA4	Energy	\$9999.77	0.11	\$1052.58
		AGL SA	TORRA1	Energy	\$9999.77	0.11	\$1052.58
		AGL SA	TORRB1	Energy	\$9999.77	0.20	\$1973.65
15:30	\$9999.77	AGL SA	TORRB2	Energy	\$9999.77	0.20	\$1973.65
		AGL SA	TORRB4	Energy	\$9999.77	0.20	\$1973.65
		AGL SA	TORRB3	Energy	\$9999.77	0.20	\$1973.65
		AGL SA	TORRA4	Energy	\$9999.77	0.11	\$1052.58
		AGL SA	TORRA1	Energy	\$9999.77	0.11	\$1052.58
		AGL SA	TORRB1	Energy	\$9999.77	0.20	\$1973.65
Spot price					\$5062.11/MWh		

Wednesday 11 November– South Australia – 4 pm

Time	Dispatch price	Participant	Unit	Service	Offer price	Marginal change	Contribution
15:35	\$9999.77	AGL SA	TORRB4	Energy	\$9999.77	0.20	\$1973.65
		AGL SA	TORRB3	Energy	\$9999.77	0.20	\$1973.65
		AGL SA	TORRB1	Energy	\$9999.77	0.20	\$1973.65
		AGL SA	TORRA4	Energy	\$9999.77	0.11	\$1052.58
		AGL SA	TORRA1	Energy	\$9999.77	0.11	\$1052.58
		AGL SA	TORRB2	Energy	\$9999.77	0.20	\$1973.65
15:40	\$9999.77	AGL SA	TORRB2	Energy	\$9999.77	0.20	\$1973.65
		AGL SA	TORRB1	Energy	\$9999.77	0.20	\$1973.65
		AGL SA	TORRA4	Energy	\$9999.77	0.11	\$1052.58
		AGL SA	TORRB4	Energy	\$9999.77	0.20	\$1973.65
		AGL SA	TORRB3	Energy	\$9999.77	0.20	\$1973.65
		AGL SA	TORRA1	Energy	\$9999.77	0.11	\$1052.58
15:45	\$9999.77	AGL SA	TORRB4	Energy	\$9999.77	0.20	\$1973.65
		AGL SA	TORRB2	Energy	\$9999.77	0.20	\$1973.65
		AGL SA	TORRB1	Energy	\$9999.77	0.20	\$1973.65
		AGL SA	TORRA4	Energy	\$9999.77	0.11	\$1052.58
		AGL SA	TORRA1	Energy	\$9999.77	0.11	\$1052.58
		AGL SA	TORRB3	Energy	\$9999.77	0.20	\$1973.65
15:50	\$9999.77	AGL SA	TORRB4	Energy	\$9999.77	0.20	\$1973.65
		AGL SA	TORRB1	Energy	\$9999.77	0.20	\$1973.65
		AGL SA	TORRA4	Energy	\$9999.77	0.11	\$1052.58
		AGL SA	TORRB2	Energy	\$9999.77	0.20	\$1973.65
		AGL SA	TORRA1	Energy	\$9999.77	0.11	\$1052.58
		AGL SA	TORRB3	Energy	\$9999.77	0.20	\$1973.65
15:55	\$9999.77	AGL SA	TORRB2	Energy	\$9999.77	0.20	\$1973.65
		AGL SA	TORRB3	Energy	\$9999.77	0.20	\$1973.65
		AGL SA	TORRB1	Energy	\$9999.77	0.20	\$1973.65
		AGL SA	TORRA4	Energy	\$9999.77	0.11	\$1052.58
		AGL SA	TORRA1	Energy	\$9999.77	0.11	\$1052.58
		AGL SA	TORRB4	Energy	\$9999.77	0.20	\$1973.65
16:00	\$9999.77	AGL SA	TORRB3	Energy	\$9999.77	0.20	\$1973.65
		AGL SA	TORRB2	Energy	\$9999.77	0.20	\$1973.65
		AGL SA	TORRB1	Energy	\$9999.77	0.20	\$1973.65
		AGL SA	TORRA4	Energy	\$9999.77	0.11	\$1052.58
		AGL SA	TORRA1	Energy	\$9999.77	0.11	\$1052.58
		AGL SA	TORRB4	Energy	\$9999.77	0.20	\$1973.65
Spot price					\$9999.77/MWh		

Wednesday 11 November– South Australia – 4.30 pm

Time	Dispatch price	Participant	Unit	Service	Offer price	Marginal change	Contribution
16:05	\$9999.77	AGL SA	TORRB3	Energy	\$9999.77	0.20	\$1973.65
		AGL SA	TORRB2	Energy	\$9999.77	0.20	\$1973.65
		AGL SA	TORRA4	Energy	\$9999.77	0.11	\$1052.58
		AGL SA	TORRB4	Energy	\$9999.77	0.20	\$1973.65
		AGL SA	TORRB1	Energy	\$9999.77	0.20	\$1973.65
		AGL SA	TORRA1	Energy	\$9999.77	0.11	\$1052.58
16:10	\$9999.77	AGL SA	TORRB3	Energy	\$9999.77	0.20	\$1973.65
		AGL SA	TORRB2	Energy	\$9999.77	0.20	\$1973.65
		AGL SA	TORRA4	Energy	\$9999.77	0.11	\$1052.58
		AGL SA	TORRB4	Energy	\$9999.77	0.20	\$1973.65
		AGL SA	TORRB1	Energy	\$9999.77	0.20	\$1973.65
		AGL SA	TORRA1	Energy	\$9999.77	0.11	\$1052.58
16:15	\$9999.77	AGL SA	TORRB3	Energy	\$9999.77	0.20	\$1973.65
		AGL SA	TORRB2	Energy	\$9999.77	0.20	\$1973.65
		AGL SA	TORRB1	Energy	\$9999.77	0.20	\$1973.65
		AGL SA	TORRA4	Energy	\$9999.77	0.11	\$1052.58
		AGL SA	TORRA1	Energy	\$9999.77	0.11	\$1052.58
		AGL SA	TORRB4	Energy	\$9999.77	0.20	\$1973.65
16:20	\$9999.77	AGL SA	TORRB2	Energy	\$9999.77	0.20	\$1973.65
		AGL SA	TORRB3	Energy	\$9999.77	0.20	\$1973.65
		AGL SA	TORRB4	Energy	\$9999.77	0.20	\$1973.65
		AGL SA	TORRA4	Energy	\$9999.77	0.11	\$1052.58
		AGL SA	TORRA1	Energy	\$9999.77	0.11	\$1052.58
		AGL SA	TORRB1	Energy	\$9999.77	0.20	\$1973.65
16:25	\$9999.77	AGL SA	TORRB3	Energy	\$9999.77	0.20	\$1973.65
		AGL SA	TORRB2	Energy	\$9999.77	0.20	\$1973.65
		AGL SA	TORRB1	Energy	\$9999.77	0.20	\$1973.65
		AGL SA	TORRA4	Energy	\$9999.77	0.11	\$1052.58
		AGL SA	TORRA1	Energy	\$9999.77	0.11	\$1052.58
		AGL SA	TORRB4	Energy	\$9999.77	0.20	\$1973.65
16:30	\$9999.77	AGL SA	TORRB2	Energy	\$9999.77	0.20	\$1973.65
		AGL SA	TORRB1	Energy	\$9999.77	0.20	\$1973.65
		AGL SA	TORRA4	Energy	\$9999.77	0.11	\$1052.58
		AGL SA	TORRB3	Energy	\$9999.77	0.20	\$1973.65
		AGL SA	TORRA1	Energy	\$9999.77	0.11	\$1052.58
		AGL SA	TORRB4	Energy	\$9999.77	0.20	\$1973.65
Spot price		\$9999.77/MWh					

Wednesday 11 November– South Australia – 5 pm

Time	Dispatch price	Participant	Unit	Service	Offer price	Marginal change	Contribution
16:35	\$9999.77	AGL SA	TORRB4	Energy	\$9999.77	0.20	\$1973.65
		AGL SA	TORRB3	Energy	\$9999.77	0.20	\$1973.65
		AGL SA	TORRB1	Energy	\$9999.77	0.20	\$1973.65
		AGL SA	TORRA4	Energy	\$9999.77	0.11	\$1052.58
		AGL SA	TORRA1	Energy	\$9999.77	0.11	\$1052.58
		AGL SA	TORRB2	Energy	\$9999.77	0.20	\$1973.65
16:40	\$9999.77	AGL SA	TORRB4	Energy	\$9999.77	0.20	\$1973.65
		AGL SA	TORRB1	Energy	\$9999.77	0.20	\$1973.65
		AGL SA	TORRB2	Energy	\$9999.77	0.20	\$1973.65
		AGL SA	TORRA4	Energy	\$9999.77	0.11	\$1052.58
		AGL SA	TORRA1	Energy	\$9999.77	0.11	\$1052.58
		AGL SA	TORRB3	Energy	\$9999.77	0.20	\$1973.65
16:45	\$9999.77	AGL SA	TORRB3	Energy	\$9999.77	0.20	\$1973.65
		AGL SA	TORRB2	Energy	\$9999.77	0.20	\$1973.65
		AGL SA	TORRB4	Energy	\$9999.77	0.20	\$1973.65
		AGL SA	TORRA4	Energy	\$9999.77	0.11	\$1052.58
		AGL SA	TORRA1	Energy	\$9999.77	0.11	\$1052.58
		AGL SA	TORRB1	Energy	\$9999.77	0.20	\$1973.65
16:50	\$9999.77	AGL SA	TORRB4	Energy	\$9999.77	0.20	\$1973.65
		AGL SA	TORRB2	Energy	\$9999.77	0.20	\$1973.65
		AGL SA	TORRB1	Energy	\$9999.77	0.20	\$1973.65
		AGL SA	TORRB3	Energy	\$9999.77	0.20	\$1973.65
		AGL SA	TORRA4	Energy	\$9999.77	0.11	\$1052.58
		AGL SA	TORRA1	Energy	\$9999.77	0.11	\$1052.58
16:55	\$9999.77	AGL SA	TORRB3	Energy	\$9999.77	0.20	\$1973.65
		AGL SA	TORRB1	Energy	\$9999.77	0.20	\$1973.65
		AGL SA	TORRB2	Energy	\$9999.77	0.20	\$1973.65
		AGL SA	TORRB4	Energy	\$9999.77	0.20	\$1973.65
		AGL SA	TORRA4	Energy	\$9999.77	0.11	\$1052.58
		AGL SA	TORRA1	Energy	\$9999.77	0.11	\$1052.58
17:00	\$9999.77	AGL SA	TORRB4	Energy	\$9999.77	0.20	\$1973.65
		AGL SA	TORRB2	Energy	\$9999.77	0.20	\$1973.65
		AGL SA	TORRB1	Energy	\$9999.77	0.20	\$1973.65
		AGL SA	TORRA4	Energy	\$9999.77	0.11	\$1052.58
		AGL SA	TORRA1	Energy	\$9999.77	0.11	\$1052.58
		AGL SA	TORRB3	Energy	\$9999.77	0.20	\$1973.65
Spot price		\$9999.77/MWh					

Wednesday 11 November– South Australia – 5.30 pm

Time	Dispatch price	Participant	Unit	Service	Offer price	Marginal change	Contribution
17:05	\$9999.77	AGL SA	TORRB3	Energy	\$9999.77	0.20	\$1973.65
		AGL SA	TORRB2	Energy	\$9999.77	0.20	\$1973.65
		AGL SA	TORRB4	Energy	\$9999.77	0.20	\$1973.65
		AGL SA	TORRB1	Energy	\$9999.77	0.20	\$1973.65
		AGL SA	TORRA4	Energy	\$9999.77	0.11	\$1052.58
		AGL SA	TORRA1	Energy	\$9999.77	0.11	\$1052.58
17:10	\$9999.77	AGL SA	TORRB2	Energy	\$9999.77	0.20	\$1973.65
		AGL SA	TORRB1	Energy	\$9999.77	0.20	\$1973.65
		AGL SA	TORRB3	Energy	\$9999.77	0.20	\$1973.65
		AGL SA	TORRB4	Energy	\$9999.77	0.20	\$1973.65
		AGL SA	TORRA4	Energy	\$9999.77	0.11	\$1052.58
		AGL SA	TORRA1	Energy	\$9999.77	0.11	\$1052.58
17:15	\$9999.77	AGL SA	TORRA1	Energy	\$9999.77	0.50	\$4999.89
		AGL SA	TORRA4	Energy	\$9999.77	0.50	\$4999.89
17:20	\$9999.60	Synergen	POR01	Energy	\$9999.60	1.00	\$9999.60
17:25	\$9999.77	AGL SA	TORRA4	Energy	\$9999.77	0.50	\$4999.89
		AGL SA	TORRA1	Energy	\$9999.77	0.50	\$4999.89
17:30	\$9999.60	Synergen	POR01	Energy	\$9999.60	1.00	\$9999.60
Spot price		\$9999.71/MWh					

Thursday 12 November– South Australia – 3.30 pm

Time	Dispatch price	Participant	Unit	Service	Offer price	Marginal change	Contribution
15:05	\$9999.77	AGL SA	TORRB4	Energy	\$9999.77	0.20	\$1973.65
		AGL SA	TORRB1	Energy	\$9999.77	0.20	\$1973.65
		AGL SA	TORRB2	Energy	\$9999.77	0.20	\$1973.65
		AGL SA	TORRA4	Energy	\$9999.77	0.11	\$1052.58
		AGL SA	TORRA1	Energy	\$9999.77	0.11	\$1052.58
		AGL SA	TORRB3	Energy	\$9999.77	0.20	\$1973.65
15:10	\$9999.77	AGL SA	TORRB1	Energy	\$9999.77	0.20	\$1973.65
		AGL SA	TORRB2	Energy	\$9999.77	0.20	\$1973.65
		AGL SA	TORRA4	Energy	\$9999.77	0.11	\$1052.58
		AGL SA	TORRB4	Energy	\$9999.77	0.20	\$1973.65
		AGL SA	TORRA1	Energy	\$9999.77	0.11	\$1052.58
		AGL SA	TORRB3	Energy	\$9999.77	0.20	\$1973.65
15:15	\$9999.77	AGL SA	TORRB3	Energy	\$9999.77	0.20	\$1973.65
		AGL SA	TORRB2	Energy	\$9999.77	0.20	\$1973.65
		AGL SA	TORRB1	Energy	\$9999.77	0.20	\$1973.65
		AGL SA	TORRA4	Energy	\$9999.77	0.11	\$1052.58
		AGL SA	TORRA1	Energy	\$9999.77	0.11	\$1052.58
		AGL SA	TORRB4	Energy	\$9999.77	0.20	\$1973.65
15:20	\$9999.77	AGL SA	TORRB2	Energy	\$9999.77	0.20	\$1973.65
		AGL SA	TORRB1	Energy	\$9999.77	0.20	\$1973.65
		AGL SA	TORRB4	Energy	\$9999.77	0.20	\$1973.65
		AGL SA	TORRB3	Energy	\$9999.77	0.20	\$1973.65
		AGL SA	TORRA1	Energy	\$9999.77	0.11	\$1052.58
		AGL SA	TORRA4	Energy	\$9999.77	0.11	\$1052.58
15:25	\$9999.77	AGL SA	TORRB4	Energy	\$9999.77	0.20	\$1973.65
		AGL SA	TORRB1	Energy	\$9999.77	0.20	\$1973.65
		AGL SA	TORRB2	Energy	\$9999.77	0.20	\$1973.65
		AGL SA	TORRA4	Energy	\$9999.77	0.11	\$1052.58
		AGL SA	TORRA1	Energy	\$9999.77	0.11	\$1052.58
		AGL SA	TORRB3	Energy	\$9999.77	0.20	\$1973.65
15:30	\$9999.77	AGL SA	TORRB3	Energy	\$9999.77	0.20	\$1973.65
		AGL SA	TORRB1	Energy	\$9999.77	0.20	\$1973.65
		AGL SA	TORRB2	Energy	\$9999.77	0.20	\$1973.65
		AGL SA	TORRA4	Energy	\$9999.77	0.11	\$1052.58
		AGL SA	TORRA1	Energy	\$9999.77	0.11	\$1052.58
		AGL SA	TORRB4	Energy	\$9999.77	0.20	\$1973.65
Spot price		\$9999.77/MWh					

Thursday 12 November– South Australia – 4 pm

Time	Dispatch price	Participant	Unit	Service	Offer price	Marginal change	Contribution
15:35	\$9999.77	AGL SA	TORRB3	Energy	\$9999.77	0.20	\$1973.65
		AGL SA	TORRB2	Energy	\$9999.77	0.20	\$1973.65
		AGL SA	TORRA4	Energy	\$9999.77	0.11	\$1052.58
		AGL SA	TORRB4	Energy	\$9999.77	0.20	\$1973.65
		AGL SA	TORRB1	Energy	\$9999.77	0.20	\$1973.65
		AGL SA	TORRA1	Energy	\$9999.77	0.11	\$1052.58
15:40	\$9999.77	AGL SA	TORRB1	Energy	\$9999.77	0.20	\$1973.65
		AGL SA	TORRB3	Energy	\$9999.77	0.20	\$1973.65
		AGL SA	TORRB2	Energy	\$9999.77	0.20	\$1973.65
		AGL SA	TORRA4	Energy	\$9999.77	0.11	\$1052.58
		AGL SA	TORRA1	Energy	\$9999.77	0.11	\$1052.58
		AGL SA	TORRB4	Energy	\$9999.77	0.20	\$1973.65
15:45	\$9999.77	AGL SA	TORRB2	Energy	\$9999.77	0.20	\$1973.65
		AGL SA	TORRB3	Energy	\$9999.77	0.20	\$1973.65
		AGL SA	TORRB1	Energy	\$9999.77	0.20	\$1973.65
		AGL SA	TORRA4	Energy	\$9999.77	0.11	\$1052.58
		AGL SA	TORRA1	Energy	\$9999.77	0.11	\$1052.58
		AGL SA	TORRB4	Energy	\$9999.77	0.20	\$1973.65
15:50	\$9999.77	AGL SA	TORRB4	Energy	\$9999.77	0.20	\$1973.65
		AGL SA	TORRB1	Energy	\$9999.77	0.20	\$1973.65
		AGL SA	TORRA4	Energy	\$9999.77	0.11	\$1052.58
		AGL SA	TORRA1	Energy	\$9999.77	0.11	\$1052.58
		AGL SA	TORRB2	Energy	\$9999.77	0.20	\$1973.65
		AGL SA	TORRB3	Energy	\$9999.77	0.20	\$1973.65
15:55	\$9999.77	AGL SA	TORRB4	Energy	\$9999.77	0.20	\$1973.65
		AGL SA	TORRB3	Energy	\$9999.77	0.20	\$1973.65
		AGL SA	TORRB2	Energy	\$9999.77	0.20	\$1973.65
		AGL SA	TORRA4	Energy	\$9999.77	0.11	\$1052.58
		AGL SA	TORRA1	Energy	\$9999.77	0.11	\$1052.58
		AGL SA	TORRB1	Energy	\$9999.77	0.20	\$1973.65
16:00	\$9999.77	AGL SA	TORRB3	Energy	\$9999.77	0.20	\$1973.65
		AGL SA	TORRB2	Energy	\$9999.77	0.20	\$1973.65
		AGL SA	TORRB1	Energy	\$9999.77	0.20	\$1973.65
		AGL SA	TORRA4	Energy	\$9999.77	0.11	\$1052.58
		AGL SA	TORRA1	Energy	\$9999.77	0.11	\$1052.58
		AGL SA	TORRB4	Energy	\$9999.77	0.20	\$1973.65
Spot price					\$9999.77/MWh		

Thursday 12 November– South Australia – 4.30 pm

Time	Dispatch price	Participant	Unit	Service	Offer price	Marginal change	Contribution
16:05	\$9999.77	AGL SA	TORRB4	Energy	\$9999.77	0.20	\$1973.65
		AGL SA	TORRB2	Energy	\$9999.77	0.20	\$1973.65
		AGL SA	TORRA4	Energy	\$9999.77	0.11	\$1052.58
		AGL SA	TORRB3	Energy	\$9999.77	0.20	\$1973.65
		AGL SA	TORRB1	Energy	\$9999.77	0.20	\$1973.65
		AGL SA	TORRA1	Energy	\$9999.77	0.11	\$1052.58
16:10	\$9999.77	AGL SA	TORRB3	Energy	\$9999.77	0.20	\$1973.65
		AGL SA	TORRB1	Energy	\$9999.77	0.20	\$1973.65
		AGL SA	TORRA4	Energy	\$9999.77	0.11	\$1052.58
		AGL SA	TORRB4	Energy	\$9999.77	0.20	\$1973.65
		AGL SA	TORRB2	Energy	\$9999.77	0.20	\$1973.65
		AGL SA	TORRA1	Energy	\$9999.77	0.11	\$1052.58
16:15	\$9999.77	AGL SA	TORRB4	Energy	\$9999.77	0.20	\$1973.65
		AGL SA	TORRB2	Energy	\$9999.77	0.20	\$1973.65
		AGL SA	TORRB1	Energy	\$9999.77	0.20	\$1973.65
		AGL SA	TORRA4	Energy	\$9999.77	0.11	\$1052.58
		AGL SA	TORRA1	Energy	\$9999.77	0.11	\$1052.58
		AGL SA	TORRB3	Energy	\$9999.77	0.20	\$1973.65
16:20	\$9999.77	AGL SA	TORRB3	Energy	\$9999.77	0.20	\$1973.65
		AGL SA	TORRB4	Energy	\$9999.77	0.20	\$1973.65
		AGL SA	TORRB1	Energy	\$9999.77	0.20	\$1973.65
		AGL SA	TORRA4	Energy	\$9999.77	0.11	\$1052.58
		AGL SA	TORRA1	Energy	\$9999.77	0.11	\$1052.58
		AGL SA	TORRB2	Energy	\$9999.77	0.20	\$1973.65
16:25	\$9999.77	AGL SA	TORRB4	Energy	\$9999.77	0.20	\$1973.65
		AGL SA	TORRB3	Energy	\$9999.77	0.20	\$1973.65
		AGL SA	TORRB1	Energy	\$9999.77	0.20	\$1973.65
		AGL SA	TORRA4	Energy	\$9999.77	0.11	\$1052.58
		AGL SA	TORRA1	Energy	\$9999.77	0.11	\$1052.58
		AGL SA	TORRB2	Energy	\$9999.77	0.20	\$1973.65
16:30	\$9999.77	AGL SA	TORRB4	Energy	\$9999.77	0.20	\$1973.65
		AGL SA	TORRB3	Energy	\$9999.77	0.20	\$1973.65
		AGL SA	TORRB1	Energy	\$9999.77	0.20	\$1973.65
		AGL SA	TORRA4	Energy	\$9999.77	0.11	\$1052.58
		AGL SA	TORRA1	Energy	\$9999.77	0.11	\$1052.58
		AGL SA	TORRB2	Energy	\$9999.77	0.20	\$1973.65
Spot price		\$9999.77/MWh					

Thursday 12 November – South Australia – 5 pm

Time	Dispatch price	Participant	Unit	Service	Offer price	Marginal change	Contribution
16:35	\$9999.77	AGL SA	TORRB2	Energy	\$9999.77	0.20	\$1973.65
		AGL SA	TORRB3	Energy	\$9999.77	0.20	\$1973.65
		AGL SA	TORRB1	Energy	\$9999.77	0.20	\$1973.65
		AGL SA	TORRA4	Energy	\$9999.77	0.11	\$1052.58
		AGL SA	TORRA1	Energy	\$9999.77	0.11	\$1052.58
		AGL SA	TORRB4	Energy	\$9999.77	0.20	\$1973.65
16:40	\$9999.77	AGL SA	TORRA1	Energy	\$9999.77	0.50	\$4999.89
		AGL SA	TORRA4	Energy	\$9999.77	0.50	\$4999.89
16:45	\$9999.77	AGL SA	TORRB3	Energy	\$9999.77	0.20	\$1973.65
		AGL SA	TORRB2	Energy	\$9999.77	0.20	\$1973.65
		AGL SA	TORRB4	Energy	\$9999.77	0.20	\$1973.65
		AGL SA	TORRA4	Energy	\$9999.77	0.11	\$1052.58
		AGL SA	TORRA1	Energy	\$9999.77	0.11	\$1052.58
		AGL SA	TORRB1	Energy	\$9999.77	0.20	\$1973.65
16:50	\$9999.77	AGL SA	TORRB2	Energy	\$9999.77	0.20	\$1973.65
		AGL SA	TORRB1	Energy	\$9999.77	0.20	\$1973.65
		AGL SA	TORRA4	Energy	\$9999.77	0.11	\$1052.58
		AGL SA	TORRB3	Energy	\$9999.77	0.20	\$1973.65
		AGL SA	TORRA1	Energy	\$9999.77	0.11	\$1052.58
		AGL SA	TORRB4	Energy	\$9999.77	0.20	\$1973.65
16:55	\$9999.77	AGL SA	TORRB4	Energy	\$9999.77	0.20	\$1973.65
		AGL SA	TORRB2	Energy	\$9999.77	0.20	\$1973.65
		AGL SA	TORRB1	Energy	\$9999.77	0.20	\$1973.65
		AGL SA	TORRA4	Energy	\$9999.77	0.11	\$1052.58
		AGL SA	TORRA1	Energy	\$9999.77	0.11	\$1052.58
		AGL SA	TORRB3	Energy	\$9999.77	0.20	\$1973.65
17:00	\$9999.77	AGL SA	TORRB4	Energy	\$9999.77	0.20	\$1973.65
		AGL SA	TORRB3	Energy	\$9999.77	0.20	\$1973.65
		AGL SA	TORRB1	Energy	\$9999.77	0.20	\$1973.65
		AGL SA	TORRA1	Energy	\$9999.77	0.11	\$1052.58
		AGL SA	TORRA4	Energy	\$9999.77	0.11	\$1052.58
		AGL SA	TORRB2	Energy	\$9999.77	0.20	\$1973.65
Spot price		\$9999.77/MWh					

Friday 13 November– South Australia – 4 pm

Time	Dispatch price	Participant	Unit	Service	Offer price	Marginal change	Contribution
15:35	\$9999.77	AGL SA	TORRB3	Energy	\$9999.77	0.20	\$1973.65
		AGL SA	TORRB4	Energy	\$9999.77	0.20	\$1973.65
		AGL SA	TORRB1	Energy	\$9999.77	0.20	\$1973.65
		AGL SA	TORRA4	Energy	\$9999.77	0.11	\$1052.58
		AGL SA	TORRA1	Energy	\$9999.77	0.11	\$1052.58
		AGL SA	TORRB2	Energy	\$9999.77	0.20	\$1973.65
15:40	\$9999.77	AGL SA	TORRB3	Energy	\$9999.77	0.20	\$1973.65
		AGL SA	TORRB4	Energy	\$9999.77	0.20	\$1973.65
		AGL SA	TORRB1	Energy	\$9999.77	0.20	\$1973.65
		AGL SA	TORRA4	Energy	\$9999.77	0.11	\$1052.58
		AGL SA	TORRA1	Energy	\$9999.77	0.11	\$1052.58
		AGL SA	TORRB2	Energy	\$9999.77	0.20	\$1973.65
		AGL SA	TORRB4	Lower reg	\$0.80	-0.20	-\$0.16
		AGL SA	TORRB2	Lower reg	\$0.80	0.20	\$0.16
15:45	\$9999.77	AGL SA	TORRB3	Energy	\$9999.77	0.20	\$1973.65
		AGL SA	TORRB4	Energy	\$9999.77	0.20	\$1973.65
		AGL SA	TORRB2	Energy	\$9999.77	0.20	\$1973.65
		AGL SA	TORRA4	Energy	\$9999.77	0.11	\$1052.58
		AGL SA	TORRA1	Energy	\$9999.77	0.11	\$1052.58
		AGL SA	TORRB1	Energy	\$9999.77	0.20	\$1973.65
15:50	\$9999.77	AGL SA	TORRB2	Energy	\$9999.77	0.20	\$1973.65
		AGL SA	TORRB3	Energy	\$9999.77	0.20	\$1973.65
		AGL SA	TORRA4	Energy	\$9999.77	0.11	\$1052.58
		AGL SA	TORRA1	Energy	\$9999.77	0.11	\$1052.58
		AGL SA	TORRB1	Energy	\$9999.77	0.20	\$1973.65
		AGL SA	TORRB4	Energy	\$9999.77	0.20	\$1973.65
15:55	\$9999.77	AGL SA	TORRB3	Energy	\$9999.77	0.22	\$2205.85
		AGL SA	TORRB1	Energy	\$9999.77	0.22	\$2205.85
		AGL SA	TORRB4	Energy	\$9999.77	0.22	\$2205.85
		AGL SA	TORRB2	Energy	\$9999.77	0.22	\$2205.85
		AGL SA	TORRA4	Energy	\$9999.77	0.12	\$1176.47
16:00	\$9999.77	AGL SA	TORRB2	Energy	\$9999.77	0.20	\$1973.65
		AGL SA	TORRB3	Energy	\$9999.77	0.20	\$1973.65
		AGL SA	TORRB1	Energy	\$9999.77	0.20	\$1973.65
		AGL SA	TORRA4	Energy	\$9999.77	0.11	\$1052.58
		AGL SA	TORRA1	Energy	\$9999.77	0.11	\$1052.58
		AGL SA	TORRB4	Energy	\$9999.77	0.20	\$1973.65
Spot price		\$9999.77/MWh					

Friday 13 November– South Australia – 4.30 pm

Time	Dispatch price	Participant	Unit	Service	Offer price	Marginal change	Contribution
16:05	\$9999.77	AGL SA	TORRB2	Energy	\$9999.77	0.20	\$1973.65
		AGL SA	TORRB3	Energy	\$9999.77	0.20	\$1973.65
		AGL SA	TORRB1	Energy	\$9999.77	0.20	\$1973.65
		AGL SA	TORRB4	Energy	\$9999.77	0.20	\$1973.65
		AGL SA	TORRA4	Energy	\$9999.77	0.11	\$1052.58
		AGL SA	TORRA1	Energy	\$9999.77	0.11	\$1052.58
16:10	\$9999.77	AGL SA	TORRB2	Energy	\$9999.77	0.20	\$1973.65
		AGL SA	TORRB1	Energy	\$9999.77	0.20	\$1973.65
		AGL SA	TORRA4	Energy	\$9999.77	0.11	\$1052.58
		AGL SA	TORRB3	Energy	\$9999.77	0.20	\$1973.65
		AGL SA	TORRA1	Energy	\$9999.77	0.11	\$1052.58
		AGL SA	TORRB4	Energy	\$9999.77	0.20	\$1973.65
16:15	\$9999.77	AGL SA	TORRB4	Energy	\$9999.77	0.20	\$1973.65
		AGL SA	TORRB3	Energy	\$9999.77	0.20	\$1973.65
		AGL SA	TORRA4	Energy	\$9999.77	0.11	\$1052.58
		AGL SA	TORRB1	Energy	\$9999.77	0.20	\$1973.65
		AGL SA	TORRA1	Energy	\$9999.77	0.11	\$1052.58
		AGL SA	TORRB2	Energy	\$9999.77	0.20	\$1973.65
16:20	\$9999.77	AGL SA	TORRB3	Energy	\$9999.77	0.20	\$1973.65
		AGL SA	TORRB1	Energy	\$9999.77	0.20	\$1973.65
		AGL SA	TORRB2	Energy	\$9999.77	0.20	\$1973.65
		AGL SA	TORRA4	Energy	\$9999.77	0.11	\$1052.58
		AGL SA	TORRA1	Energy	\$9999.77	0.11	\$1052.58
		AGL SA	TORRB4	Energy	\$9999.77	0.20	\$1973.65
16:25	\$9999.77	AGL SA	TORRB2	Energy	\$9999.77	0.20	\$1973.65
		AGL SA	TORRB4	Energy	\$9999.77	0.20	\$1973.65
		AGL SA	TORRB3	Energy	\$9999.77	0.20	\$1973.65
		AGL SA	TORRA4	Energy	\$9999.77	0.11	\$1052.58
		AGL SA	TORRA1	Energy	\$9999.77	0.11	\$1052.58
		AGL SA	TORRB1	Energy	\$9999.77	0.20	\$1973.65
16:30	\$9999.77	AGL SA	TORRB2	Energy	\$9999.77	0.20	\$1973.65
		AGL SA	TORRB1	Energy	\$9999.77	0.20	\$1973.65
		AGL SA	TORRA4	Energy	\$9999.77	0.11	\$1052.58
		AGL SA	TORRB3	Energy	\$9999.77	0.20	\$1973.65
		AGL SA	TORRA1	Energy	\$9999.77	0.11	\$1052.58
		AGL SA	TORRB4	Energy	\$9999.77	0.20	\$1973.65
Spot price		\$9999.77/MWh					