

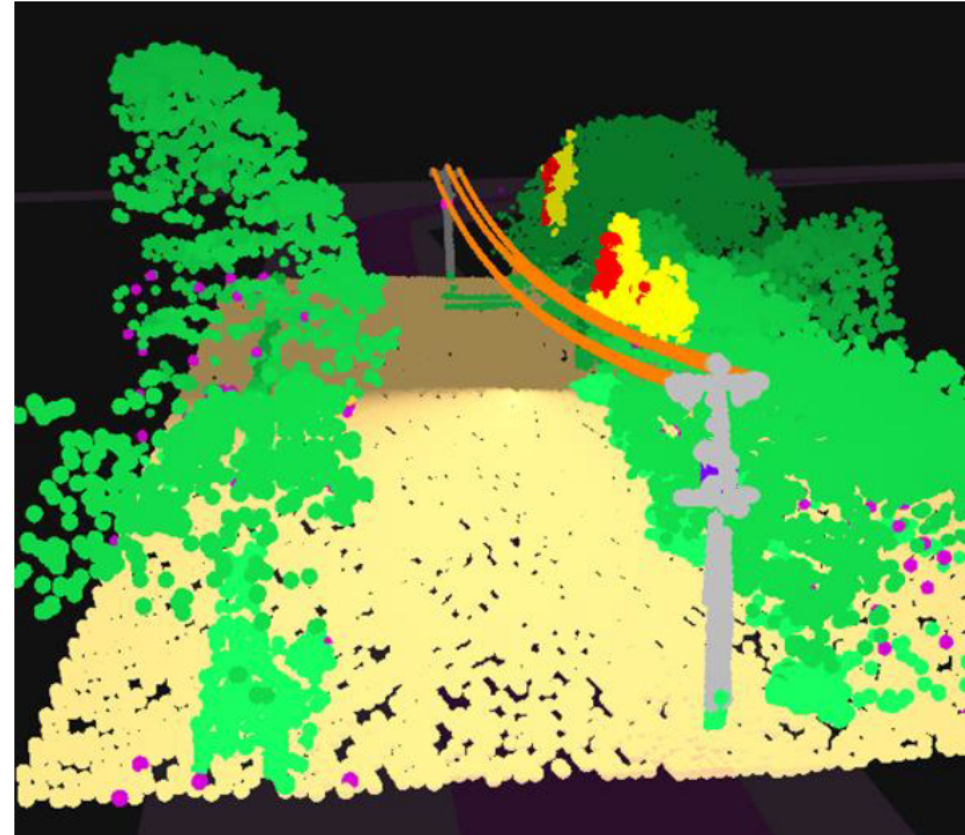
Vegetation program of work Overview

September 2022



Inspection | We inspect our entire network every year

- We utilise helicopter based LiDAR to inspect our full networks (85,000 kms of powerline) each year
- We are the only distributor in Australia to complete full annual inspection of all spans (this commenced in 2018)
- We have insourced our LiDAR process – investing in helicopters and data processing capability to ensure accuracy and completeness of inspection (the only network in Australia to do so)
- We have completed 25,000-30,000 fall tree arborist assessments each year for the last three years (completed by qualified arborists on the ground). Any trees identified as containing hazards are managed in line with our approved plan



Digital model output from LiDAR inspection identifying vegetation requiring action

Cutting | We have doubled our historic cutting volumes

- We complete programmed cutting across our regions on an ongoing basis
- We have increased our historic cutting volumes averages:
 - Prior to 2013 – [REDACTED] spans per year
 - 2014-2016 – [REDACTED] spans per year
 - 2016 onwards – [REDACTED] spans per year
- In 2021 we cut 500,000 trees across our line clearance cutting program
- We have cut 788 hazard trees YTD in 2022, our highest annual volume



Significant volume of vegetation being removed from cypress hedge using all terrain Jarraff - Geelong zone substation

Resourcing | Our current resourcing is at the highest level for the year and continuing to trend upwards



Cutting underway in September 2022 on Terang zone substation

- We currently have 81 cutting crews working on our program – the highest volume for the year. This is continuing to build and is forecast to reach 90 by mid-November. There has been significant focus with our contractors to attract new people to the vegetation management industry given the shortage of resources felt across the industry since 2020
- This translates to 350 people working on our program each day
- Our contractors have doubled their mechanical cutting capability as compared to last year. Mechanical equipment can cut larger volume of vegetation more safely and quickly
- In the Ecklin South area we have 8 cutting crews working, increasing to 12 by the end of the month

Cutting examples | Moyne region



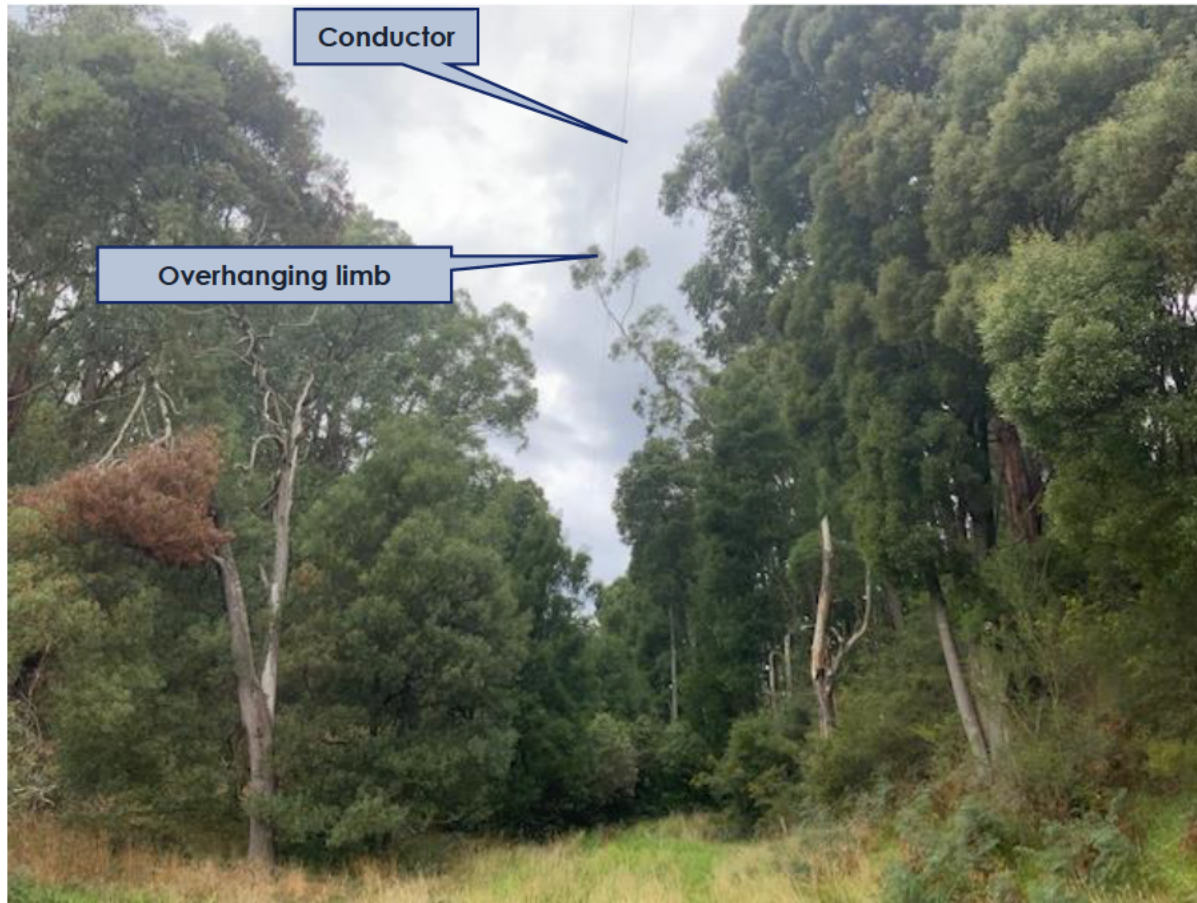
Before and after photos from cutting on Terang zone substation

Cutting examples | Moyne region



Before and after photos from cutting on Terang zone substation

Cutting examples | Otways region



Climbers cutting overhanging limb whilst under shutdown in Otways region

Cutting examples | Otways region



Before and after photos from cutting in Otways region



Cutting examples | Geelong region



All terrain Jaraff removing a huge amount of vegetation from challenging cypress hedge spans on Drysdale zone substation